



Annual Report 2012



Mission

The mission of Tall Timbers Research Station is to foster **exemplary land stewardship** through research, conservation and education. Our primary research focus is the ecology of fire and natural resource management including bobwhite quail and other wildlife in the southeastern coastal plain. Our conservation efforts are dedicated to helping protect the distinctive Red Hills landscape of south Georgia and north Florida, and its traditional land uses. Our education program transfers research and conservation information for resource management.

Exemplary Land Stewardship (ELS) balances ecological values and economic utility within a framework of long-term conservation. The foundation of ELS on upland habitats in the Red Hills is the frequent use of fire to accommodate management for bobwhite quail and other fire dependent species, selection timber harvest, and other traditional land uses. Scenic, open, multi-aged forest structure is fundamental to ELS.



President’s Report

By Bill Palmer, PhD, President & CEO

The mission of Tall Timbers states that we are to promote “exemplary land stewardship,”

which we take seriously. The bottom line is that our research and conservation programs positively affect stewardship of our natural resources and help people meet their management goals. How? We serve as an information resource for landowners and managers; we protect the region with conservation planning and conservation easements – some 127,000 acres are perpetually protected; and we work with land managers to improve management of public and private lands for fire-adapted species across the southeast U.S.

One of our greatest strengths is our credibility honed from our long-term research and management programs and our accredited land conservation program. Tall Timbers has a breadth of knowledge that stems from working in the only landscape in the southeast U.S. where fire has remained in the ecosystem. Our founders and past colleagues had the foresight to document how management influences nature and how management drives the system, something we continue today.

Our approach to conservation is strategic and multi-faceted. This past year the Tall Timbers Land Conservancy conducted a comprehensive economic survey of Red Hills’ landowners. This information will ultimately demonstrate the tremendous economic importance of this community to our region. Ensuring policy makers understand these values, along with a completed study of the value of ecosystem services, will help us continue to protect the region from urban sprawl.

On the front cover, photo at left of the Wade Tract Preserve, photo by Rose Rodriguez. On the right, historic 1926, photo of Tall Timbers benefactor, Henry L. Beadel, from the Tall Timbers Archives.

In 2012, we published significant findings from our long-term Stoddard Plot fire return interval study on how critical frequent fire is to sustain pine savannas. We hosted an important meeting on particulate matter emissions and their policy implications for prescribed burners, and through collaborations, such as Fire Summit II, we helped our region set long-term goals for fire use.

Regionally, our research continues to drive both bobwhite and threatened species management through translocation; and our Outreach program educates about Exemplary Land Stewardship. We continue to add new wild quail lands to the Southeast, some 2,000 acres this past year, working with landowners from Delaware to Alabama. As you review our annual report it is important to remember that all the science, outreach, and conservation planning is the result of a small but dedicated team of professionals.

And finally, we lost too many long-time friends this year; stalwarts of our community and champions of conservation. Tall Timbers has been strengthened by our association and partnerships with them. These conservation-minded individuals are irreplaceable, but we continue their work in their memory, promoting the management that produced the wild places they loved. (See page 14.)

Contents

Chairman’s Message.....3
Research & Land Management.....4
2012 Research Publications.....7
Tall Timbers Land Conservancy.....10
Operations & Support.....12
Development & Annual Giving.....15
Statement of Financial Position.....26
2012 Staff and Associates.....27

Chairman’s Message
Changes in leadership at Tall Timbers

By David Perkins, Chairman

Since 2007, it’s been my pleasure to serve Tall Timbers as Chairman of the Board of Trustees, but after two terms it’s time for new leadership. Cornelia Corbett, who has been Vice Chairman, and also led the Land Conservancy Easement Review Committee since becoming a Trustee, will capably succeed me as Chairman in 2013.

During my tenure, I have been committed to making sure that the resources of Tall Timbers are available and helpful to our constituents, especially landowners and land managers, to help them be the best land stewards they can be.

The great recession hit at the beginning of my term, but we stayed the course. I’m proud to report that much has been accomplished on tight operating budgets during the past six years. Below are the highlights:

- Developed the 2010-2019 Strategic Plan, which will direct the organization this decade with six strategic goals reflecting our mission.
- Implemented an Outreach and Education program, one of our strategic plan goals. We developed a managers’ luncheon program where new research findings have been shared and new tools for land management have been presented. And, we have developed a series of more intensive workshops for managers and natural resource professionals on topics ranging from quail management to GIS.
- Permanently protected 127,000 acres in the Red Hills Region of north Florida and southwest Georgia, most through donated conservations easements.
- Provided better communication through our electronic newsletter, the *Tall Timbers E-News*, which now has over 2500 subscribers. The E-News, re-designed website and printed materials have focused on providing science-based land management recommendations and other content you have requested within our mission.
- In 2012, the Board of Trustees successfully ended the “silent phase” of the 50th Anniversary Endowment Campaign begun in 2008. Guided by Development, Operations and Support Director Vann Middleton, they raised over \$10 million during a down economy.
- Oversaw the change in Tall Timbers operating leadership as long-time Executive Director Lane Green retired and Dr. Bill Palmer, who had been Research Director, transitioned to running the organization as President/CEO.

As new Board and Staff leadership take over the reins in an improving economy, Tall Timbers is poised to secure its future while providing its constituents the information and tools they need to manage and conserve land in a modern digital world.



Tall Timbers Research, Inc.
2012 Board of Trustees

Chairman
Mr. David D. Perkins

Vice-Chairmen
Mrs. Richard A. Corbett

Secretary
Mrs. Daphne F. Wood

Treasurer
Mr. Tom L. Rankin

Trustees
Mrs. Kathy R. Archibald
Dr. Peter T. Bromley, PhD
Mr. Charles M. Chapin, III
Mr. Ward Davenport
Mrs. Rosamond C. Davis
Mr. Kenneth D. Haddad
Mr. O. Mason Hawkins
Mr. Redmond Ingalls
Mr. Rhett Johnson
Mr. Robert H. (Rip) Kirby
Mr. John Wesley Langdale III
Dr. Karl Miller, PhD
Mr. Timothy B. Pirrung
Mr. Michael D. Shea
Dr. George W. Simmons
Mr. Reggie E. Thackston
Mr. John Thompson
Mr. Ebe Walter
Mr. George Watkins
Mrs. Robert C. Webster, Jr.

President/CEO
Dr. William E. Palmer, Ph.D.

2013 Tall Timbers Board of Trustees: (L-R seated) Cindy Webster, Ken Haddad, Daphne Wood, Cornelia Corbett, Rozzie Davis, Mason Hawkins, Charlie Chapin, (L-R standing) Rhett Johnson, Karl Miller, Rip Kirby, John Thompson, Tim Pirrung, Dave Perkins, George Watkins, George Simmons, Tom Rankin, Reggie Thackston. Not pictured: Ward Davenport, Redmond Ingalls, Wesley Langdale, Ebe Walter, Virginia Wetherell. Photo by Rose Rodriguez

Research & Land Management

Research's primary focus is the ecology and management of fire-dependent ecosystems. Longer-term studies are also a primary focus and give us the basic knowledge of how ecosystem processes work over many years and under varying weather conditions. Understanding these ecosystem processes is essential in order to make wise recommendations for land management. One of the best contributions we can make to future generations is a legacy on the land that leaves intact, healthy ecosystems as a result of wise land management and stewardship.

At Tall Timbers, dissemination of information from research is the end product and of highest importance. In 2012 staff had an unprecedented year with 34 scientific manuscripts published. Staff also produced 11 extension and popular articles. As well, staff made 39 (14 invited) scientific presentations at state, regional and national conferences, and workshops. In addition to our staff research our Beadel Fellows and Research Associates continue to produce substantial gains in knowledge through our collaborative efforts.

Outreach in research is an important link to disseminating information. Staff conducted 83 outreach activities to civic, private, academia, and agency groups. One example is the instructor cadre, which staff jointly composed for the highly successful Natural Resources Conservation Service's "Fire in Southern Pines" course held at Tall Timbers. This week-long course provides NRCS field personnel in-depth training on fire use, fire management and ecological effects and provides them with the skills to conduct conservation planning that promotes fire use in contracts with landowners.

Working with agencies, Tall Timbers is spreading the message of good land stewardship through research and outreach. Our Upland Ecosystem Restoration project worked on seven projects across the state with documented results of increased fire frequency and improvements to plant and bird communities. Staff has also improved methods for monitoring bird populations on public lands with innovative dependable techniques. Finally, we have increased the amount of acres appropriately managed with frequent fire, meeting our mission of exemplary land stewardship.

Tall Timbers hosted Fire Summit II that involved Georgia and Florida forestry and fire leaders to update their state's 2009 Strategic Plan for Prescribed Burning, which was an outcome of Fire Summit I. Representatives from South Carolina and Alabama audited the Summit as they plan to write a prescribed burning strategic plan for their states. The Summit was funded by a U.S. Forest Service Redesign Grant; the Summit Proceedings were published as Tall Timbers Miscellaneous Publication No. 19.

A new partnership was formed in 2012, with Tall Timbers and the Prescribed Fire Training Center (PFTC) located in Tallahassee, FL, which is funded by the U.S. Forest Service. As a result of the partnership, Tall Timbers welcomed Mr. Greg Seamon, PFTC Fire Training Specialist, to its staff. He is stationed at PFTC in Tallahassee. The PFTC interagency partnership is comprised of the USDA Forest Service, USDI-Fish & Wildlife Service, Bureau of Land Management, National Park Service, Bureau of Indian Affairs, and the Florida Forest Service.

Research was saddened this year by the loss of Mr. Earl Bennett, member of Tall Timbers' Science & Land Management Committee from April 12, 2001 – December 12, 2011. He also served as forestry consultant to Tall Timbers on several occasions with timber thinning and the removal of hardwoods. Recognition of his service was presented to his family at the April 2012 annual Board Meeting.



Fire Summit II facilitator Joe Michaels, at left, helped attendees from Florida and Georgia update their 2020 strategic plans for prescribed fire.

Research and Land Management Highlights of 2012

Fire Ecology

- Tall Timbers has extensive biological collections. Through a grant from the National Science Foundation, we created detailed digital images of the Tall Timbers biological collections, in which all of the plant specimens and all species of birds, mammals, and butterflies were imaged and entered into a database for online viewing and research (<http://www.morphbank.net/>).
- To better estimate particulate matter (PM) emission factors (PM produced per biomass burned) from prescribed burning is important for air quality regulations. Our research is providing accurate estimates of the chemical makeup of PM and how environmental conditions under which prescribed burning occurs influence emission factors. Accurate predictions of PM from prescribed burning help ensure that regulators do not over-estimate the effects of prescribed fire on air quality.



- Hardwood re-sprouts are a common management issue in fire-maintained ecosystems. We completed collaborative research on the effects of fire on re-sprouting processes of hardwoods. The research focused on fire-return interval on individual survival rates and root-shoot ratio trajectories. This information was presented to land managers, many who use fire to manage hardwoods.

Game Bird Program

- Supplemental feeding has become a standard best management practice for bobwhite management. Tall Timbers' Game Bird Program originated research demonstrating the positive effects of providing supplemental feed to bobwhite and other species, while reducing the need to disturb ground cover. We completed the second year of a three-year study investigating the effects of different rates of feed on bobwhite population dynamics. This research will help refine cost-effective management recommendations.
- Prescribed fire size influences species differently depending on their life histories. Larger fires may be suitable for some species, but less so for others. We completed a study on effects of fire size on Bachman's sparrows, a highly mobile species, and developed a study on fire scale on bobwhite, a less-mobile species. Our goal is to refine fire management recommendations for balancing quail and songbird management on public lands.
- Translocation of bobwhites was proven a successful management technique to establish new bobwhite populations in the southeast U.S. Tall Timbers Game Bird Program conducted five translocations in 2012, and to date has created new quail populations on over 30,000 acres.



Stoddard Ornithology Laboratory

- In honor of H. L. Stoddard and our long-term research on birds, we renamed Vertebrate Ecology, the Stoddard Ornithology Lab at Tall Timbers.
- The Stoddard Ornithology (Bird) Lab completed a landowner assistance grant (\$200,000) with U.S. Fish and Wildlife Service. This 3-year project helped to control hardwoods and expand longleaf pine and native warm season grasses on 11 properties in the region.
- The Stoddard Bird Lab created a novel experiment to understand cooperative breeding behavior in Brown-headed nuthatches, a declining fire-dependent species inhabiting pine forests. This experiment creates gender-biased populations by cross-fostering young. The gender biases will help to test behavior models of cooperative behavior. Based on the success of this project, the National Science Foundation has requested Tall Timbers to submit a proposal detailing the funding needed to continue the experiment for five years.



Grasshopper sparrow. Photo courtesy of Marianne Korosy.

- The Stoddard Bird Lab initiated research on effects of prescribed burning on endangered Florida Grasshopper Sparrow. One factor contributing to the decline of this sparrow could be the season in which prescribed burns are conducted. The project looks at the effects that early (March) vs. late (May) burns may have on productivity and survival.
- Surveys of rare birds were initiated on seven new public lands. The surveys were developed by the Stoddard Bird Lab to help land managers monitor Bachman's Sparrows and other declining pineland birds, and understand the link between population trends and land management practices.

Beadel Fellows

Tall Timbers' Beadel Fellow Program supports retired senior naturalists and scientists on projects that further the mission of Tall Timbers through a small annual stipend. It has benefited tremendously from the important contributions of this long standing program.

- Dr. Gil Nelson, Beadel Fellow (since 2006) concluded work on a project funded by the National Science Foundation to digitize specimens from Tall Timbers' Natural History Museum and Scientific Collections. These collections include the R. K. Godfrey Herbarium specimen sheets (10,500); Lucien Harris, Jr. Lepidoptera (Butterfly) Collection (1388 specimens); Herbert L. Stoddard Bird Collection (3945 specimens); and the Roy Komarek Mammal Collection (969 mammals and 268 exemplars). As a result of these efforts, Tall Timbers' collections and data are now available to scientists online worldwide and are easily discoverable through several interfaces. The work accomplished through this project was successful due to the abbe assistance of Virginia Craig.

- Dr. Jeff Glitzenstein and Dr. Donna Streng, Beadel Fellows (since 2007) continued work on a manuscript for publication from the long-term St. Marks National Wildlife

Dr. Bill Platt, far right, supervising core boring at the Wade Tract in 1993. Photo by M. L. Hiss, courtesy of Bill Platt.

Refuge season of burn study. In addition, they began analysis of woody plant data provided by Dr. Kevin Robertson on the long-term Tall Timbers Stoddard Fire Plot Study. A contract from Westervelt Co. to conduct monitoring on a restoration project adjacent to St. Marks National Wildlife Refuge was secured and monitoring accomplished. Other contracted research studies include sites in North Carolina, South Carolina and Georgia.

- Dr. Bill Platt, Beadel Fellow (since 2009) conducted analyses of long-term data on the Wade Tract Preserve mapped plot (1978-2009). A file with the recorded history of fires in the mapped plot on Wade Tract (1978-2012) is almost complete. The prescribed fires are being placed into a format useful for compiling the history of fire on the mapped plot, as well as measurements of characteristics and behavior of the more recent prescribed fires. In the fall, 2012, final data were collected and are currently being processed and analyzed on a field experiment initiated in 2011 on the Wade Tract concerning "the effects of fuel type and amount on groundcover plants on prescribed fires and groundcover vegetation" supported by a National Science Foundation grant. Dr. Platt also has been involved in a series of papers that use data and concepts derived from the study of the Wade Tract.

Tall Timbers' Beadel Fellows provide a unique and enriching perspective to our staff and scientists throughout the year. They provide mentorship and wisdom to graduate students and interns. Their experiences in their field of study are invaluable to Tall Timbers.



Partnership

The National Park Service

Caroline Noble, NPS Southeast Region Fire Ecologist

The National Park Service Southeast (NPS) Fire Ecology Program and Fuels Management Program began to feel the repercussions from declining budgets in 2012. Congress is closely scrutinizing and questioning the effectiveness of all prescribed fires on federal lands. The NPS monitoring program is able to provide detailed maps and data that demonstrate the benefits of prescribed fire in the southeast. Our data demonstrate not only the ecological benefits but also the benefits in terms of reduced fuels for wildfires. This data will be increasingly important as federal funds for prescribed fire continue to decline.

Locating the regional fire ecologist position at Tall Timbers continues to be highly valuable in fostering such partnerships with others in the field of fire ecology.



February 2012: Bodie Island Lighthouse, Cape Hatteras National Seashore, North Carolina. NPS fire managers implement a prescribed fire at Cape Hatteras National Seashore to improve habitat for waterfowl and Neotropical migrant bird populations.

Further information about the NPS fire management and fire effects monitoring programs can be found at the following website: <http://www.nps.gov/fire/wildland-fire/what-we-do/science-ecology-and-research.cfm>

2012 Research Publications — Staff & Associates

Peer Reviewed

- Burnam, J.S., G. Turner, S.N. Ellis-Felege, W.E. Palmer, D.C. Sisson, and J.P. Carroll. 2012. Patterns of incubation behavior in northern bobwhites (*Colinus virginianus*). Pp. 77- 88 in C.A. Ribic, F.R. Thompson III, and P.J. Pietz (eds.). Video surveillance of nesting birds. *Studies in Avian Biology* (no. 43), University of California Press, Berkeley, CA.
- Butler, D.A., W.E. Palmer and M.P. Cook. 2012. The invertebrate diet of northern bobwhite chicks in Georgia, United States. *Animal Biodiversity and Conservation* 35(2) 415-418.
- Cox, J.A., L.C. Scopel, and M.R. Klostermann. 2012. Brown-headed Nuthatch occupancy in central Florida and its relationship to forest type, forest structure, and the presence of Red-cocaded Woodpeckers. *Condor* 114(3):622–628.
- Cox, J.A. 2012. Social grooming in the Brown-headed Nuthatch may have expanded functions. *Southeastern Naturalist* 11(4):771-774.
- Cox, J.A. 2012. American Swallow-tailed Kite (*Elanoides forficatus*) captures an adult Brown-headed Nuthatch (*Sitta pusilla*). *Florida Field Naturalist* 40(2): 56-57.
- Crawford, R.L. and W.R. Brueckheimer. 2012. *The Legacy of a Red Hills Hunting Plantation: Tall Timbers Research Station & Land Conservancy*. University Press of Florida, Gainesville. 360 pages
- Ellis-Felege, S.N., A. Miller, J.S. Burnam, S.D. Wellendorf, D.C. Sisson, W.E. Palmer, and J.P. Carroll. 2012. Partial depredations on northern bobwhite (*Colinus virginianus*) nests. Pp. 161-172 in C.A. Ribic, F.R. Thompson III, and P.J. Pietz (eds.). Video surveillance of nesting birds. *Studies in Avian Biology* (no. 43), University of California Press, Berkeley, CA.
- Ellis-Felege, S.N., M.J. Conroy, W.E. Palmer, and J.P. Carroll. 2012. Predator reduction results in compensatory shifts in losses of avian ground nests. *Journal of Applied Ecology* 49(3):661–669. Scientific (This Article was featured in the "Science in Short" section of the Wildlife Professional [2012, vol. 6, pg. 11]).
- Evans, K.O., L.W. Burger Jr., T.V. Dailey, B.A. Emmerich, S.D. Wellendorf, T.P. Seiler, and W.E. Palmer. 2012. Expanding predictive assessment of northern bobwhite covey calling rates to incorporate regional effects (Abstract). *Proceedings of the National Quail Symposium* 7:134.
- Evans, K.O., L.W. Burger Jr., and W.E. Palmer. 2012. Genetic structure of northern bobwhites in northeast Mississippi and southwest Tennessee. *Proceedings of the National Quail Symposium* 7:244-250.
- Faircloth, B.C., W.E. Palmer, T.M. Terhune, P.A. Gowaty, and J.P. Carroll. 2012. The sexual proclivities of northern bobwhites (Abstract). *Proceedings of the National Quail Symposium* 7:255.

Glitzenstein, J.S., D.R. Streng, R.E. Masters, and K.M. Robertson and S.M. Hermann. 2012. Fire-frequency effects on vegetation in north Florida pinelands: another look at the long-term Stoddard Fire Research Plots at Tall Timbers Research Station. *Forest Ecology and Management* 264:197-209.

Longcore T, C. Rich, P. Mineau, B. MacDonald, D.G. Bert, L.M. Sullivan, E. Mutrie, S.A. Gauthreaux Jr., M.L. Avery, **R.L. Crawford**, A.M. Manville II, E.R. Travis, and D. Drake. 2012. An Estimate of Avian Mortality at Communication Towers in the United States and Canada. PLoS ONE 7(4): e34025. doi:10.1371/journal.pone.0034025. (*WCTV Tower Kill—(Stoddard study) related*)

Magnussen, S., L. Fehrman, and **W.J. Platt**. 2012. An adaptive composite density estimator for *K*-tree sampling. *European Journal of Forest Research* 131:307-320. (ref: Wade Tract)

Martin, J.A. , W.E. Palmer, M. Juhan, and J.P. Carroll. 2012. Wild Turkey habitat use in frequently-burned pine savanna. *Forest Ecology and Management* 285:179-186.

Martin, J.A., W.E. Palmer, and J.P. Carroll. 2012. Aspects of northern bobwhite ecology on south Florida US pastureland. European Journal of Wildlife Research (9 October 2012), pp. 1-10, doi:10.1007/s10344-012-0667-6.

Masters, R.E. and J.R. Waymire. 2012. Oak savanna restoration: Oak response to fire and thinning through 28 years. Pp. 69-91 In Dey, D.C.; M.C. Stambaugh, S.L.Clark, and C.J.Schweitzer (eds.). *Proceedings of the 4th fire in eastern oak forests conference*; May 17-19, 2011; Springfield, MO. Gen. Tech. Rep. NRS-P-102. Newtown Square, PA: USDA, Forest Service, Northern Research Station.

Masters, R.E. and J. Waymire. 2012. Developing management strategies from research: Pushmataha Forest Habitat Research Area, Oklahoma. Pp. 253-284 in Sands, J.P., S.J. DeMaso, M.J. Schnupp, and L.A. Brennan (eds.). *Wildlife Science: Connecting Research with Management*. CRC Press, Texas A&M University, Kingsville. 333 Pp.

Miller, R.S., W.E. Palmer, and S.D. Wellendorf. 2012. Age-specific nesting performance by northern bobwhites. *Proceedings of the National Quail Symposium* 7:229-233.

National Bobwhite Technical Committee. 2012. W.E. Palmer, T.M. Terhune, T.V. Dailey, D.F. McKenzie, and J. Doty, (eds.). Executive Summary: National Bobwhite Conservation Initiative, March 2011 NBCI 2.0...the unified strategy to restore wild quail. *Proceedings of the National Quail Symposium* 7:370-380. (Appendices)

Palmer, W.E. 2012. Closing the gap between private land managers and wildilfe scientists: the importance of private wildlife research institutions. Pp. 63-84 in Sands, J. P., S.J. DeMaso, M.J. Schnupp and L.A. Brennan (eds.). *Wildlife Science:Connecting Research with Management*. CRC Press, Texas A&M University, Kingsville. 333 Pp.

Palmer, W.E., R.D. Cass, S.D. Wellendorf, J.F. Sholar, T.M. Terhune, and J.P. Carroll. 2012. Survival and reproduction of parent-reared northern bobwhites. *Proceedings of the National Quail Symposium* 7:64-71.

Palmer, W.E., D.C. Sisson, S.D. Wellendorf, A.M. Bostick III, T.M. Terhune, and T.L. Crouch. 2012. Habitat selection by northern bobwhite broods in pine savanna ecosystems. *Proceedings of the National Quail Symposium* 7:108-112.

Palmer, W.E., S.D. Wellendorf, D.C. Sisson, and B. Bostick. 2012. Value of private lands managed for wild northern bobwhites in the deep South (Abstract). *Proceedings of the National Quail Symposium* 7:300.

Palmer, W.E., T.M. Terhune, T.V. Dailey, D.F. McKenzie and J. Doty. 2012. National Bobwhite Conservation Initiative, NBCI 2.0. The unified strategy to restore wild quail. *Proceedings of the National Quail Symposium* 7:370-380.

Reid, A.M. and K.M. Robertson. 2012. Energy content of common fuels in upland pine savannas of the south-eastern US and their application to fire behaviour modelling. *International Journal of Wildland Fire* 21:591-595.

Reid, A.M., K.M. Robertson, and T.L. Hmielowski. 2012. Predicting litter and live herb fuel consumption during prescribed fires in native and old-field upland pine communities of the southeastern United States. *Canadian Journal of Forest Research* 42:1611-1622.

Roth, A.M., R.W. Rohrbaugh, K. Aldinger, M.H. Bakermans, S. Barker Swarthout, D.A. Buehler, J.L. Confer, D. Crawford, C. Friis, R.M. Fowlds, J.L. Larkin, J. Loegering , J.D. Lowe, M. Piorkowski, K.V. Rosenberg, C. Smalling, **T.M. Terhune**, R. Vallender, T. Will, and P.B. Wood. 2012. Golden-winged Warbler breeding season conservation plan. In Roth, A.M., R.W. Rohrbaugh, T. Will, and D.A. Buehler (eds.). *Golden-winged Warbler Status Review and Conservation Plan*. www.gwwa.org/

Sisson, D.C., W.E. Palmer, T.M. Terhune, and R.E. Thackston. 2012. Development and Implementation of a successful northern bobwhite translocation program in Georgia. *Proceedings of the National Quail Symposium* 7:289-293.

Thackston, R.E., D.C. Sisson, T.L. Crouch, D.L. Baxley, and B.A. Robinson. 2012. Hunter harvest of pen-raised northern bobwhites released from the Surrogator®. *Proceedings of the National Quail Symposium* 7:72-76.

Terhune, T.M., W.E. Palmer, T.V. Dailey, B. Dukes, C.L. McKelvy, J.J. Morgan, J.C. Pitman, M. Puckett, and R.E. Thackston. 2012. Using the conservation planning tool to effectively recover northern bobwhites: an example for states to effectively step-down the NBCI plan (Abstract). *Proceedings of the National Quail Symposium* 7:304.



Wellendorf, S.D. and W.E. Palmer. 2012. Calling rates of male bobwhites during summer in north Florida (Abstract). *Proceedings of the National Quail Symposium* 7:137.

Wellendorf, S.D., W.E. Palmer, and D.C. Sisson. 2012. Factors influencing northern bobwhite hunting success on two south Georgia plantations. *Proceedings of the National Quail Symposium* 7:155-161.

Extension

Michaels, J. and L. Green. 2012. *Fire Summit II: The Future of Prescribed Fire in Florida and Georgia 2013-2020 Proceedings*. October 16-18, 2012. Tall Timbers Research Station Miscellaneous Publication No. 19. 43 p.

Reid, A.M. 2012. Getting the Most from Online Fire Resources: FRAMES and the Southern Fire Portal, Southern Fire Exchange Website SFE Fact Sheet 2012-21-3.

Reid, A.M. 2012. Getting the Most from Online Fire Resources: Encyclopedia of Southern Fire Science, Southern Fire Exchange Website SFE Fact Sheet 2012-11-2.

Reid, A.M. 2012. Getting the Most from Online Fire Resources: Joint Fire Science Program’s Firescience.gov, Southern Fire Exchange Website. SFE Fact Sheet 2012-31-2.

Robertson, K.M. 2012. Wildland fire PM emission factor workshop summary. Southern Fire Exchange 14.

Terhune, T.M., T.V. Dailey, D.M. McKenzie, and W.E. Palmer. 2012. A Tool to Bring Back Bobwhites. *The Wildlife Professional* Vol. 6(2):64-66.

Weir, J.R., Reid, A.M. and S.D. Fuhlendorf. 2012. Wildfires in Oklahoma. Oklahoma Cooperative Extension Service, NREM-2888-4.

Popular

Nickens, T.E. 2012. In search of the wild flush. (Tall Timbers SC Quail Project is featured in article) Garden and Gun Aug-Sept. 86-91.

Reid, A.M. 2012. Tall Timbers Fire Ecology Research Biologist, Angie Reid, represents SRM in Washington. *Tall Timbers E-news* 5(3).

Robertson, K.M., G. Nelson, and A. Mast. 2012. Imaging the Tall Timbers Research Station’s biological research collection: Project Outcome Report http://www.research.gov/research-portal/appmanager/base/desktop?_nfpb=true&_windowLabel=T31400570011264188753337&wsrp-urlType=render&wsrp-url=&wsrp-requiresRewrite=false&wsrp-navigationalState=T31400570011264188753337_action%3DviewRsrSearchResults&wsrp-in 1.

Simbeck, R. 2012. Can quail rise again? (Tall Timbers SC Quail Project featured in article) *South Carolina Wildlife* Sep-Oct. 26-31.

Graduate Students

Brown, S.K. 2012. Movements, home range, and habitat selection of Bachman’s Sparrows (*Peucaea aestivalis*) on a longleaf sandhill forest—implications for fire management. M.S. Thesis, University of Georgia, 94 Pages.

Grant Reports

Hsieh, Y.P., K.M. Robertson, and G.M. Bugna. 2012. Quantifying particulate matter emission factors from prescribed burning with application to mitigating the impact on air quality. National Science Foundation.

Robertson, K.M., G. Nelson, and A. Mast. 2012. Imaging the Tall Timbers Research Station’s Biological Research Collections: Final Report to National Science Foundation, Grant 0956343. National Science Foundation 10.

Robertson, K.M., G. Nelson, A. Mast. 2012. Imaging the Tall Timbers biological collection: final report to National Science Foundation. National Science Foundation Final Report and Public Outreach Report 15.

Land Conservancy

By Kevin McGorty, Director Tall Timbers Land Conservancy

Land Conservation — “Closing the Gap”

A key goal of Tall Timbers’ Strategic Plan is to work with landowners in closing the gap between conserved and unprotected lands in the Red Hills Region of north Florida and southwest Georgia. To date nearly 167,000 of the 300,000 acre Red Hills core area are permanently conserved, mostly by donated conservation easements. This is a remarkable success story, but more work needs to be done to ensure the sustainability for the future of this unique and beautiful region.

With this goal in mind and a love of their land, George and Cyndi Watkins recently donated a conservation easement to Tall Timbers for the remaining 1,595 acres of Dogwood Plantation. Dogwood is located on the Florida-Georgia state line. In 2004, the Watkins’ donated a 711 acre easement protecting the Wards Creek portion of their property. The phase II easement continues protecting the broad forested floodplain associated with Wards Creek, a tributary stream to Lake Miccosukee and part of the St. Marks River watershed. The uplands portion of the property contains large longleaf which are extremely rare and worthy of additional protection.



Longleaf Pine Forest on Dogwood Plantation

Dogwood Plantation is strategically located, and is adjacent to other conservation easements of similar critical habitats and management styles. At a landscape scale, this conservation easement will ensure connectively and similarity amongst these lands providing significant benefit to Tall Timbers’ efforts to conserve the greater Red Hills Region.



George and Cyndi Watkins, owners of Dogwood Plantation, recently donated a major conservation easement to Tall Timbers

Reflecting the love for his land, George Watkins said it best “it is an honor to be the stewards of this property and comforting to know it is protected in perpetuity”.

Another strategic property was placed under easement in 2012, when Mrs. Lela McCarty Mitchell conserved an additional 500 acres of Pine Fair Plantation located in Thomas County, Georgia. This is the third phased easement on the property. The main landscape feature of this tract is Gatling Branch, a small tributary stream to the Aucilla River. Considering the importance to protect water resources in the Aucilla watershed, Gatling Branch has been designated as a Special Natural Area (SNA). Additionally, the mature floodplain timber provides wildlife habitat for many game and nongame species such as, whitetail deer, eastern wild turkey, and many resident and migratory songbirds.

Conserving the Aucilla River Watershed is a high priority and goal of Tall Timbers. Pine Fair is one of fourteen different hunting plantations that the river passes through. In the Georgia headwaters, the Aucilla is a series of creeks. Below the Georgia headwaters at the state line, the Aucilla picks up volume and broadens into extensive linear swamps of cypress, gum and bay which serve as critical wildlife habitat. This watershed is known for its pristine water quality derived from twenty-one first magnitude springs. Tall Timbers is grateful to Mrs. Mitchell for continuing to conserve this important property in the Red Hills.

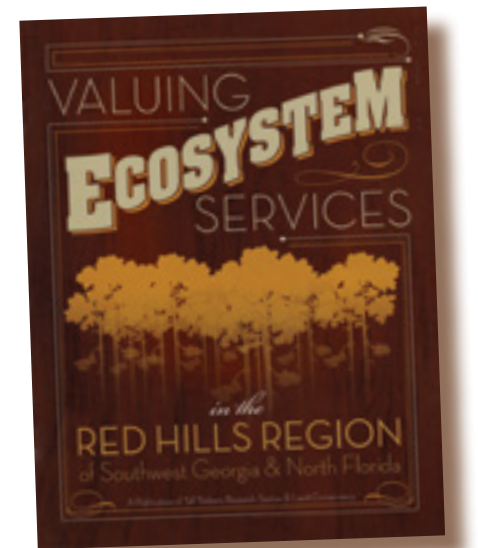


Planning and Advocacy

Red Hills Valuation of Ecosystem Services Study Published

In 2012, TTLC planning staff published the results from the Red Hills Valuation of Ecosystem Services Project. This was a multi-year project undertaken by Tall Timbers in conjunction with the University of Georgia, Warnell School of Forestry, to estimate the economic value of natural services provided by privately owned forestlands in the Red Hills Region. Ecosystem services include such irreplaceable services as drinking water recharge, water purification, flood control, crop pollination, climate control, and wildlife habitat.

The study found that private forests in the Red Hills provide an estimated \$1.13 billion annually in natural services that are vital to the lives of everyone in the region. Water supply protection and drinking water recharge account for approximately 74 percent of that total. Economists at the University of Georgia estimate the average value of ecosystem services per acre in the Red Hills ranges from \$600 to more than \$11,900 annually, depending upon the forest characteristics on site. Tall Timbers will use the results from the Ecosystem Services publication along with our Cost of Community Services study [describing how rural lands help subsidize high infrastructure and service costs in our communities] in our efforts to inform the public and key local, state, and federal leaders about the vital ecologic and economic roles performed by the Red Hills Region. Copies of this study are available on the Tall Timbers’ website: <http://www.talltimbers.org/lc-publications.html>



Economic Impact Analysis Project

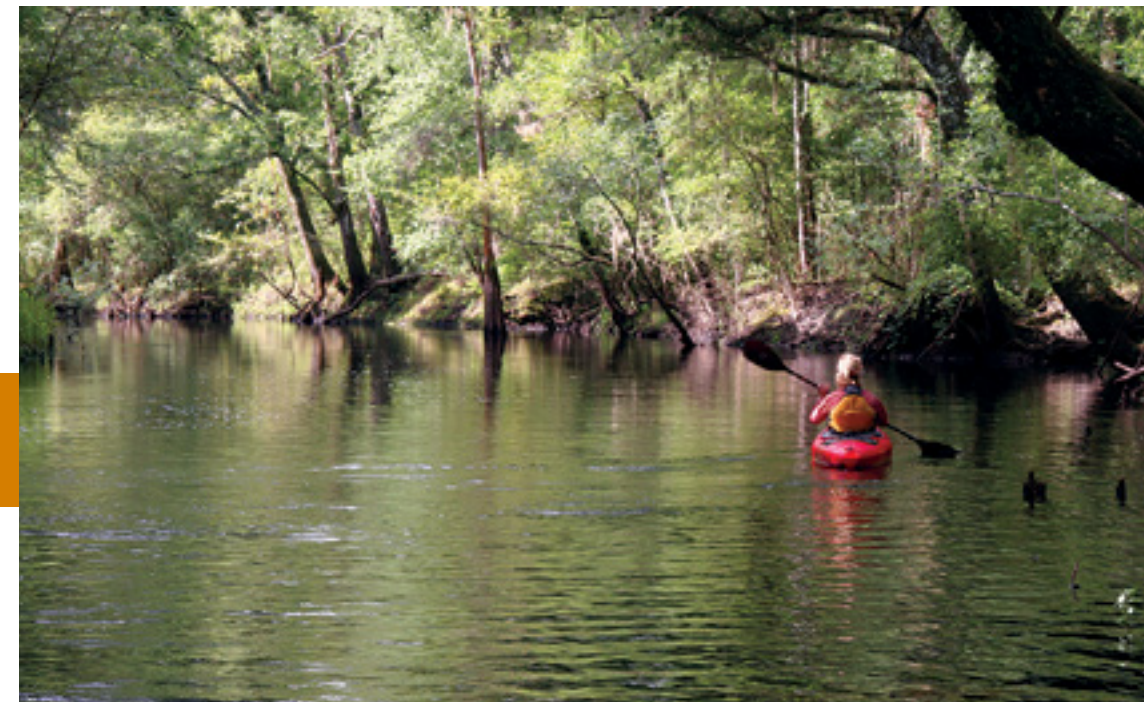
Tall Timbers’ planning staff is working on another important economic study, the Red Hills Economic Impact Analysis Project. This two-year effort is the first ever comprehensive analysis of the direct and indirect economic impact and job creation provided by 110 Red Hills’ working rural properties covering some 380,000 acres. We are partnering on this project with the Center for Economic Forecasting and Analysis at Florida State University. Tall Timbers is undertaking this project because we know from firsthand experience the messages that truly resonate with officials and others, who make decisions that directly affect the Red Hills region, are “jobs” and “economic impact.” We believe the results of this study will demonstrate that Red

Hills’ working rural lands provide tremendous economic impact, job creation, and economic diversification for our communities.

Other Planning Activities

Tall Timbers’ planning staff worked with a coalition of interested parties raising concerns about the potentially adverse impacts of a proposed comprehensive plan amendment in rural Leon County. The amendment in question was withdrawn. Planning staff continued to monitor and raise concerns regarding the potential for the proposed Orchard Pond Toll Road to encourage sprawling suburban growth in the southwestern portion of the Red Hills.

Finally, planning staff chaired the Big Bend Environmental Forum (2010 – 2012) and coordinated two candidates’ environmental and growth management forums attended by nearly all candidates for local elected office as well as more than 250 members of the public.



Kayaking on the Aucilla River.
Photo By Doug Alderson

Operations & Support

The Operations & Support Department includes Development, Information Services, Outreach & Education and Facilities & Grounds. In 2013, Information Services will be under Administration.

INFORMATION SERVICES

Tall Timbers' product is information. Supervised by Rose Rodriguez, the staff of Information Services, coordinate the full-range of activities necessary to meet both the internal and external information needs of Tall Timbers. These activities include Communications (public relations, print and digital publications and website management); the Library, managed by librarian Carol Armstrong Kimball, maintains the E. V. Komarek Fire Ecology Database; and the Archives, Records Management and Historic Resources are maintained by Juanita Whiddon.

Communications

In October 2012, the University Press of Florida published *The Legacy of a Red Hills Hunting Plantation, Tall Timbers Research Station & Land Conservancy*, which traces the evolution of Tall Timbers benefactor Henry Beadel from sportsman and naturalist to conservationist. Complemented by a wealth of previously unpublished, rare vintage photographs, it follows the transformation of the plantation into what its founders envisioned — a long-term research station, independent of government or academic funding and control.

The author, Robert L. Crawford, used the unpublished manuscript on the history of Tall Timbers Plantation, written by William R. Brueckheimer during his tenure as a Beadel Fellow from 1973 to 1984, as the genesis for the first part of the book. Crawford, who was formerly a biologist on Tall Timbers staff, edited, reorganized and added new material to the manuscript, which Brueckheimer had ended with the founding of Tall Timbers Research Station in 1958. Part II, the history of the first 50 years of Tall Timbers as a biological field station, and then later with the addition of the land trust, is skillfully written by Crawford with editorial contributions from staff incorporated in several chapters. Rose Rodriguez, who began work on the project in 2004, was the managing editor as well as the photo editor. She also worked with local booksellers and vendors to publicize and sell the book at several book signing events.

The *The Legacy of a Red Hills Hunting Plantation* received a Silver Medal from the 2012 Florida Book Awards



in the Visual Art category, and was also nominated for the George Perkins Marsh Prize in the environmental history category and the Southern Historical Association Frank L. and Harriet C. Owsley Award.

Tall Timbers is grateful to Mr. and Mrs. Russell Chubb for their generous donation that allowed us to publish this book, which is in fact a cultural and environmental history of the entire Red Hills region.

Parker-Williams Library

In 2012, the Library and Archives began collaborating on a Map Project. Maps that have been stored in the Library, Archives and Land Conservancy office have been evaluated. Part of the process will be to digitize the approximately 100 paper maps in our collection (some quite fragile) that have been deemed valuable, catalog them and then add these records to the online library catalog along with the 500+ plus digital maps also in the collection. This will provide staff easy access to all of our maps in a preferable digital format. With tight operating budgets, this project is waiting for external funding before it can proceed. If you would like to help, please contact the Development Office.

Librarian Carol Armstrong Kimball completed her two-year term as Secretary of the Florida and Caribbean Chapter of SLA (Special Library Association) in 2012; she is also active in PLAN, the Panhandle Library Access Network. These professional associations are important for staying connected with other special libraries and for receiving inter-library loans.

Archives & Historical Resources

In addition to giving monthly house tours and tours to special groups throughout the year, archivist Juanita Whiddon hosted the second Archaeology and History Day (commonly referred to as "Dig Day" by participants) in February 2012 for 20 middle school students. Former Tall Timbers Planta-

tion tenant farm family members Richards Jones and Gerri Jones Thompson, talked about life on a tenant farm in the 1940s. Archaeologist Ross Morrell, who consulted on the Jones Family Tenant Farm restoration, was on hand to help participants with the digging and volunteers assisted with the activities.

Beate Sass, whose black and white photography of former tenants of the Jones Family Tenant Farm, and the landscape and Beadel House at Tall Timbers, led to an exhibit at LeMoyne Center for the Visual Arts in 2011, was asked by the director of the Southeast Museum of Photography to repeat and expand her Tall Timbers Plantation Project in their new exhibition space at the Lyonia Environmental Center in Deltona. In April of 2012, Beate and Juanita gave a program on the project at the Lyonia Gallery exhibit opening. As a testament to the quality of her photography, one of the photographs from the exhibit was used on the cover of the Nov-Dec 2012 issue (#103) of *LensWork*, where her portfolio is featured.



Inset, Juanita Whiddon discussed the Jones Family Tenant Farm restoration project at the Lyonia Environmental Center in Deltona, FL; above, the Tall Timbers Plantation photography exhibit at the Lyonia Gallery.

OUTREACH & EDUCATION

Two-thousand twelve marked the first full year for the Outreach and Education program at Tall Timbers. Much of the year was dedicated to developing and outlining a strategy for education and outreach with the primary objective being to transfer information gained from research to the practitioners — e.g., those implementing habitat management on-the-ground. To facilitate this, a land managers' luncheon series was launched. These luncheons are designed with the land manager in mind but may also provide benefit to landowners, and biologists. Relevant topics (e.g., Integrating GIS and GPS into Land Management) were selected to discuss practical land management techniques learned from the latest research. In addition to luncheons, staff hosted three week-long GIS workshops, teaching natural resource professionals valuable geospatial skills used to manage both public and private lands.



Land managers luncheon held in June 2012.

Outreach and Education staff participated in numerous regional and national conservation planning efforts such as the Longleaf Partnership Council, National Bobwhite Conservation Initiative, Eastern grassland bird working group, Golden-winged Warbler working group and prescribed fire and GIS working groups. A seminal product, the Golden-winged Warbler Conservation Action Plan, was completed and published in 2012, a direct result of a cooperative planning effort with the Cornell Lab of Ornithology, the University of Tennessee and others.

The rapid advancement of mobile technology (e.g., smartphones, tablets) has opened the doors for creation of apps and maps for collecting and distributing information relevant to conservation and research. In 2012, Tall Timbers partnered with CoveyIQ to provide a data entry app and online management system for quail hunting. Data collected with the app will garner useful information for a regional quail harvest study. Additional beta versions of maps and apps were created in 2012 by Tall Timbers staff with hopes to officially launch these products in 2013.

Outreach and Education Coordinator, Dr. Theron M. Terhune, was selected as the 2012 Keynote Speaker at the Seven Hills Regional User Group for the GIS conference held in Tallahassee, FL. In addition to this honor, Theron was awarded the National Bobwhite Technical Committee Annual Award — a recognition award for outstanding contribution to the conservation and management of bobwhites.

Outreach & Education continued on back page.

In Memory

Earl Bennett

Consulting forester and appraiser Earl Bennett provided years of guidance to Tall Timbers in both areas of research and conservation. He was a dedicated member of the Tall Timbers' Science and Land Management Committee, providing invaluable insight into the management of pine forests in the greater Red Hills region. He assisted Tall Timbers in the publication of the Red Hills Forest Stewardship Guide. Earl was a driving force in helping his clients place their property under conservation easement with Tall Timbers. He assisted in the development of conservation management plans for many of the leading easements in the region. He loved the Red Hills and his legacy will be the beautiful forests that he helped to conserve.



Henry Faison



Tall Timbers lost a dear friend and true champion of bobwhite in 2012 – Mr. Henry Faison of Charlotte, NC. Henry was a giant in the field of commercial development throughout the Southeast and he cared deeply for the outdoors and outdoor sporting life. Leading by example, Mt. Pleasant Plantation was restored to wild quail by Henry and his partners. He was the driving force behind Tall Timbers being deeply involved in low country quail management. As a direct result of his determination, influence and tireless efforts, the South Carolina Quail Research Project was established in 2009. His vision of increasing the acreage of wild quail lands is not lost, as the project continues to grow in scope with research and outreach efforts now touching over 40,000 acres. Tall Timbers will dearly miss Henry's enthusiasm, leadership and friendship.

Louise I. Humphrey

The Red Hills lost a conservation champion in 2012 when Louise Ireland Humphrey passed away. She was a longtime Tall Timbers Trustee, joining the Board in 1982, and served as the Chair of the Development Committee from 1991-1998. During the 1990s she was responsible for raising more than \$3.5 million, including the renovation and addition to the Stoddard Lab, now known as the Wade Research Center. In 1997, Louise organized a generous gift from her Hanna family cousins to help retire the note from the purchase of a property adjacent to Tall Timbers, now known as Hanna Hammock. During her tenure, she chaired the annual Naturalists' Ball. This "tails or tweeds" event, held under a tent at Pebble Hill Plantation, raised funds for Tall Timbers research and conservation programs during hunting season.

Louise was an original contributor to the Red Hills Conservation Association, the predecessor to the Tall Timbers Land Conservancy and put her Woodfield Springs Plantation under conservation easement, among the first. We are so grateful for her many accomplishments on behalf of Tall Timbers; the evidence is visible every day.



Development

ANNUAL GIVING

Your gift makes a difference

Your annual gift to Tall Timbers produces tangible results. As a steward of our wildlife and wildlands, your support helps conserve critical wildlife habitat, precious natural resources, and historic rural landscapes for future generations to share and enjoy.

Aside from annual membership giving, there are many ways you can make a tax-deductible gift to Tall Timbers.

- **Program Specific Gifts:** You can designate a research or conservation program as the beneficiary of your gift.

- **Appreciated Securities:** Stocks, bonds and other appreciated securities can be transferred from your brokerage account directly into Tall Timbers' account.

- **In-Kind Gifts:** Tall Timbers is always in need of equipment, furniture, vehicles or supplies that can help supplement our growing needs and demands.

- **Planned Giving:** You can help leave a legacy of support by naming Tall Timbers as a beneficiary in your will, charitable trust, life insurance policy or retirement plan. A planned gift is an excellent way to protect the value of your estate as you provide for the future of Tall Timbers.

- **Memorial Gifts:** Make a special gift in memory of a loved one or special friend.

- **Become a Corporate Sponsor:** Tall Timbers is always looking for corporate partners to help sponsor fundraising events, publications, educational seminars and special projects.

For more information about any of the above giving opportunities or how you can support the research and conservation efforts of Tall Timbers, please visit our website, www.talltimbers.org, or contact the Development Office: 850.893.4153, x343. Thank you again for your generous support.

Partners in Research & Conservation

Tall Timbers thanks those very special donors whose cumulative giving in 2012 represents the very highest levels of support for our organization.

\$100,000 AND ABOVE

Mrs. Kathy R. Archibald
The Archibald Foundation, Inc.
Mr. and Mrs. Richard A. Corbett
The William H. Flowers Foundation, Inc.
Mr. and Mrs. Tom Rankin
Mr. and Mrs. C. Martin Wood, III

Earl Bennett Estate
Miss Wendy Bicknell
Mr. Franklin L. Burke
Mr. Gregory Callimanopoulos
Mr. and Mrs. Charles M. Chapin, III
Mr. James Dahl
Mr. Joseph H. Davenport
Mr. Howell Ferguson and Dr. Sharon Maxwell Ferguson

\$50,000 - \$100,000

The William Stamps Farish Fund
The Firman Fund
Florida Fish & Wildlife Conservation Commission
The Louise H. and David S. Ingalls Foundation
Mr. W. T. McKenzie
Parker Poe Charitable Trust
The Perkins Charitable Foundation
Mr. and Mrs. Warren Stephens - Stephens Inc.
Mr. and Mrs. Witt Stephens - Stephens Inc.
Williams Family Foundation of Georgia, Inc.

Mr. Lawrence Flinn
Mr. Frank Foley
Mr. Gardiner W. Garrard
Georgia Power Foundation
Mr. and Mrs. Terrence M. Graunke
Mr. D.D. Hoven
The Gilbert W. and Louise Ireland Humphrey Foundation
Mr. William J. Hurst
JCK Foundation, Inc.
The Claire H.B. Jonklaas Foundation

\$25,000 - \$50,000

Anonymous
Anonymous
Mr. Henry J. Faison
Gem Land Company
Mr. and Mrs. Ken Hart
Mr. and Mrs. O. Mason Hawkins
Mr. and Mrs. Samuel B. Kellett, Sr.
Kate Ireland Foundation
The Moore Charitable Foundation, Inc.
Mr. and Mrs. Colin S. Phipps
Turner Foundation, Inc.
G.G. Wade Trust
Mr. and Mrs. George C. Watkins

The Johnston Family Foundation
Kolomoki Plantation
Mr. Bernard Lanigan
Mrs. A. Bliss McCrum
MeadWestVaco
R. K. Mellon Family Foundation
Merrily Plantation, Inc.
North Florida Animal Hospital
Mr. Donal C. O'Brien
The Orvis Company
Mr. and Mrs. David D. Perkins
Mr. and Mrs. John E. Phipps
Mr. William H. Prestage
Mr. and Mrs. Samuel K. Scovil
Senah Plantation, LLC
Dr. Henry Sears

\$10,000 - \$25,000

AgPro Boston Companies
Anonymous
Anonymous
Mr. Theo B. Bean
Becker Trading Company

Shade Farms, LLC
Mr. and Mrs. Remy Trafelet
Mr. Samuel E. Upchurch
Mrs. Robert C. Webster, Jr.
Mr. R. Ted Weschler
Mr. Mark Worthy

2012 TALL TIMBERS ANNUAL FUND CONTRIBUTORS

Stoddard Society: \$10,000 and above

AgPro Boston Companies
Mr. Theo B. Bean, Jr.
Mr. Gregory Callimanopulos
Mr. and Mrs. Richard A. Corbett
Mr. Mason Hawkins
The Claire H.B. Jonklaas Foundation - Mr. Anthony Jonklaas
Texas Industries - Mr. and Mrs. Bernard Lanigan
Parker Poe Charitable Trust
The Orvis Company, Inc.
The Perkins Charitable Foundation
The William Stamps Farish Fund
Mr. Samuel E. Upchurch Jr.
Mrs. Robert C. Webster, Jr.

Benefactor Members: \$5,000 - \$9,999

Anonymous
Mr. Harry Burn, III
Mr. and Mrs. Russell P. Chubb
George S. Rich Family Foundation, Inc.
Mr. Terence M. Graunke
Mrs. Gilbert W. Humphrey
Mr. Alan Lamarche
Mrs. D. Williams Parker
Mr. David D. Perkins
Plantation Security - Mr. Alan Lamarche
Mr. and Mrs. Tom L. Rankin
The Perkins Charitable Foundation
Mr. and Mrs. George C. Watkins

Patron Members: \$2,500 - \$4,999

Anonymous
Anonymous
Mrs. Kathy R. Archibald
Mr. and Mrs. C. DuBose (Duby) Ausley
Mr. Edward L. Baker
Mr. John D. Baker, II
Miss Wendy H. Bicknell
Mr. Arthur L. Cahoon
Ms. Laura Donnelley
Mr. and Mrs. Lawrence Flinn, Jr.
Harley Langdale, Jr. Foundation Inc
Mr. Redmond S. Ingalls
Mr. and Mrs. Samuel B. Kellett, Sr.
Mrs. Sallie P. Sullivan
The Kate Ireland Foundation
Mr. and Mrs. Thomas V. H. Vail
Mrs. Emily V. Wade
Mr. and Mrs. Bob Williamson



Left to right: Ellery Sedgwick, Tall Timbers Trustee Redmond Ingalls, and Caren Sturges at the 2012 Tall Timbers Fall Field Day held on Cherokee Plantation, Leon County, FL.

SPONSOR MEMBERS: \$1,000 - \$2,499

Anonymous
Mr. John G. Alston
Mr. and Mrs. Thomas C. Chubb, III
Mr. and Mrs. Charles E. Commander, III
Mr. Charles R. Crisp
Mr. and Mrs. Joseph H. Davenport, III
Mr. Howell L. Ferguson and Dr. Sharon Maxwell
Mr. James L. Ferman, Jr.
Mr. James G. Fitzgerald
Mr. James C. Gatewood
Mr. Elbridge T. Gerry, Jr.
Mr. and Mrs. Philo T. Grant
Mr. and Mrs. Kenneth R. Hart
Mr. Joseph M. Hixon
Mr. Sherrill W. Hudson
Mr. and Mrs. G. Watts Humphrey, Jr.
Mr. William J. Hurst
Mr. and Mrs. Melville H. Ireland, Jr.
Mr. Robert L. Ireland Jr.
Mr. Summerfield K. Johnston, Jr.
Ms. Connie S. Kummer
Mr. George R. Langford
Mr. and Mrs. John B. Long, II
Mr. W. A. McGriff, III
Dr. and Mrs. Douglas C. McPherson
Mr. Everall D. Perkins
Mr. and Mrs. Clifford M. Preston
Dr. and Mrs. Charles R. Sanders
Mr. and Mrs. Samuel K. Scovil
Mr. and Mrs. Ellery Sedgwick
Mr. and Mrs. Michael D. Shea
Mr. Taylor W. Smith
Mr. and Mrs. William G. Smith, Jr.
Mr. and Mrs. Witt R. Stephens, Jr.
Thomas H. Lanier Foundation

Mr. John W. Thompson
Mr. John W. Thompson
Dr. and Mrs. Walter R. Tschinkel
Mr. and Mrs. C. Martin Wood, III

Sustaining Members: \$500 - \$999

Dr. and Mrs. J. Galt Allee
Mr. and Mrs. Mark Anderson
Mr. Lamar Q. Ball, III
Mr. Bryant Beadles
Mr. C. Victor Beadles
Mr. and Mrs. Warren Bicknell, III
Dr. and Mrs. Clifford S. Bristol
Mr. and Mrs. John M. Carlton, Jr.
Mr. Henry L. Crisp
Mr. William F. D'Alonzo
Mr. and Mrs. Edward A. Davis, Jr.
Mr. Guy De La Valdene
Mr. and Mrs. J. Everitt Drew
Mr. and Mrs. C. David Fonvielle
Dr. and Mrs. Louis Hill, Jr.
Mr. D. Dwayne Hoven
Mr. and Mrs. Thomas E. Ireland
Mr. Harry T. Jones, III
Mr. Tom Jones
Mr. and Mrs. Rip Kirby
Mr. and Mrs. W. Gates Kirkham
Mr. and Mrs. Bryan F. Knox
Mr. and Mrs. A. Lawton Langford
Mr. and Mrs. Bernard Lanigan
Dr. and Mrs. John R. Lewis, Ph.D.
Mr. Robert C. Loudermilk, Sr.
Dr. Robert McDavid
Mr. and Mrs. Kenneth G. McDermott
Mr. Walter E. Melton, Jr.

Mr. John W. Mettler
Ms. Constance M. Middleton
Mr. and Mrs. C. Mark Pirrung
Private Forester, Inc.
Dr. and Mrs. John B. Reynolds
Mr. Sonny Roberts
Mr. Ellery W. Sedgwick
Dr. and Mrs. George W. Simmons
Mr. and Mrs. J. Vereen Smith
Mr. and Mrs. Bernie Staller
Mr. Timothy P. Sullivan
Mr. and Mrs. Charles M. Tarver
The Proctor Dealerships
The Theo B. Bean Foundation, Inc.
Mr. Lee Walters
Mr. Miles B. Watkins
Dr. and Mrs. Philip C. Watt
Mr. and Mrs. Blair Williams
Mr. Mark A. Worthey

Supporting Members: \$250 - \$499

Anonymous
Mr. Jeff Alexander
Dr. Carol Allman and Mr. Kenneth L. Allman
Mr. William H. Anderson, II
Mr. and Mrs. R. C. Balfour, III
Mr. and Mrs. Richard R. Barnett, Sr.
Mr. Craig Barrow, III
Mr. Ben F. Betts, Jr.
Mr. R. H. Bickerstaff, Sr.
Mr. and Mrs. Sid C. Bigham, Jr.
Mr. Michael E. Blakeley
Mr. Edward S. Bonnie
Dr. and Mrs. Gary Bonvillian
Mr. and Mrs. Allan M. Bostick Jr.
Dr. William D. Boyer
Mr. and Mrs. Hal Brannen
Brightwater Strategies, LLC
Mr. and Mrs. Arden S. Brown
Mr. and Mrs. P.W. Bryan, Jr.
Mr. R. R. M. Carpenter
Mr. Charlton H. Chatfield
Mr. Cader B. Cox, III
Mr. Dale C. Critz
Mr. Douglas M. Croley
Mr. Elliott Davenport
Mr. and Mrs. Jed Davis
Dr. John B. Davis, Jr.
Mrs. Endicott P. Davison
Duck Haven Gun Club
Mr. William A. Dupre', III
Mr. and Mrs. J. Colin English, Jr.
Mr. and Dr. Neil Fennell
Mr. Monty C. Ferrell
Florida Chamber of Commerce
Mr. Franklin W. Foster

Miss Patricia Gainey
Mr. David H. Gambrell
Grady Electric Membership Corp.
Mr. and Mrs. Ralph G. Greene
Dr. and Mrs. Edward L. Hall
Dr. Bob Harbin
Mr. David H. Hardin
Mr. and Mrs. Michael S. Hartman
Hickey Farms
Dr. Jack B. Hobson
Mr. and Mrs. Sloan Howard
Mr. Winston K. Howell
Mr. John K. Humphress
Mr. and Mrs. Bernie Hyde
Mr. William L. Ireland
Mr. and Mrs. Powell Jones
Mr. John E. Ladson, III
Mr. and Mrs. G. Robertson Langford
Mr. Michael J. Lee
Mr. Ken Legette
Mr. and Mrs. G. Mayo Livingston
Mrs. Francis P. Malone
Mr. Kevin McGorty
Mr. Harry H. McNeel
Mr. Jamie Michaels
Mr. and Mrs. David J. Middleton
Mr. and Mrs. Doug Miller
Mr. W. S. Montgomery, Jr.
Mr. and Mrs. Charles Newlin, Jr.
Mr. Hamlet T. Newsom, Jr.
Mr. and Mrs. Floyd Newton
Dr. and Mrs. Bill Palmer
Mr. and Mrs. James W. Parrish
Mr. Franklin Reinstine, Jr.
Mr. James M. Robinson, IV
Mr. and Mrs. David C. Scott
Dr. Terry Smith
Mr. and Mrs. Pete Thomas
Mr. Robert M. Trulock

Mr. and Mrs. Richard S. Vann
Mr. Sam B. Waddill
Mr. David E. Ward, Jr.
Mr. James W. Warren, Jr.
Mr. Richard D. Webb
Mr. and Mrs. Dale Wellendorf
Mr. Roland Wetherbee
Mr. Hoyt H. Whelchel, Jr.
Dr. and Mrs. Dale A. Wickstrum
Mr. and Mrs. Jerry Williamson
Mr. Bryan Willis
Mr. John S. Wise

Contributing Members: \$125 - \$249

Mr. Mark Abdoney
Ms. Mary Alice H. Anderson
Mr. Stan Barnes

Mr. Ellis Barton
Mr. and Mrs. Douglas Beach
Mr. John P. Beasley, Sr.
Mr. Wayne Bell
Betsy Barfield Photography
Big A Farms
Dr. Thomas B. Bragg
Mr. George H. Brannen, II
Mr. Joseph S. Brannen
Dr. Peter T. Bromley
Mr. Bobby Brown
Mr. and Mrs. Craig A. Bruner
Mrs. Woodward Burgert
Dr. Jeff Byrd
Mr. Percy Chubb, III
Judge James L. Cline, Jr.
Mr. and Mrs. Oscar T. Cook, Jr.
Mrs. Bethany H. Corum
Mr. and Mrs. James C. Crawford
Dr. and Mrs. Gene L. Davidson
Mr. Asa Davis
Mr. and Mrs. Don Davis



Outgoing Trustee Kathy Archibald is presented with a Sutton print for her many years of service on the Tall Timbers Board by fellow Trustee George Watkins.

J. Daniel Davis, M.D.
Mr. and Mrs. Walt Davis
Mr. and Mrs. Endicott P. Davison, Jr.
Mr. Robert H. Demere Jr.
Mr. and Mrs. Marc Doyle
Mr. and Mrs. Laurie Dozier
Mr. Hunter Drew
Mr. Edward Epp
Mr. Chester W. Fannon, Jr.
Mr. Grayal E. Farr
Mr. Philip Faulk
Ms. Susan M. Fitzgerald
Mr. and Mrs. Langdon S. Flowers, III
Mr. and Mrs. Rick Floyd
Mr. Todd Ford



Gannet Pond Birdwatch Dedication in honor of Betty Komarek at the 2012 Tall Timbers Piney Woods Festival. At left visitors join Juanita Whiddon, second from left, at the dedication ceremony for the renovation of the Birdwatch. At right Kathleen Brady, Director of Birdsong Nature Center joins Executive Director, Lane Green at the unveiling of the new plaque for the Gannet Pond Birdwatch that is dedicated to Betty Komarek.

Georgia Forestry Association
Mr. and Mrs. David Gilchrist
Ms. Susan P. Glenn
Mr. Benson T. Green
Mr. and Mrs. Lane Green
Mr. and Mrs. Ralph G. Greene
Mr. George F. Grimsley
Mr. Greg Hagar
Dr. and Mrs. Lynn Hagood
Mr. and Mrs. Greg Hamil
Mr. Fred Hancock
Mr. Harper Hanway
Mr. Henry J. Harper
Mr. Peter A. Hays
Mr. Robert K. Henderson
Mr. and Mrs. Don P. Hicks
Mr. Grover Hicks Jr.
Dr. Joseph R. Hughes, III
J. Crisp Enterprises, LLC
Mr. Clifford W. Johnson
Mr. J. Emory Johnson
Mr. and Mrs. Chad Jones
Mr. Ralph Jowett, Jr.
Mr. Irv Kenyon
Mr. Terry W. Knepper
Mr. Mason H. Lampton
Mr. and Mrs. Gary Landrum
Mr. J. Wesley Langdale, III
Mr. William M. Lee
Mr. Fred Leggett
Mr. and Mrs. Logan M. Lewis
The Honorable and Mrs. Terry Lewis
Dr. and Mrs. William D. Long

Mr. Charles P. Lykes, Jr.
Mr. and Mrs. Hugh M. Magevney, IV
Mr. William A. Martin
Mr. and Mrs. Ben W. McCollum
Mr. and Mrs. Eric McCollum
Mr. Charles G. McDaniel
Mr. and Mrs. Mark E. McEwen
Mr. Andy McMullian, III
Mr. and Mrs. Melvin Merrill
Mr. David J. Middleton
Mr. and Mrs. E. Vann Middleton
Mr. Payne H. Midyette, Jr.
Mr. and Mrs. Emmett Mitchell, III
Mr. and Mrs. Ed Moody
Ms. Julie H. Moore
Mr. Alexander G. Morehouse
Mr. and Mrs. Nigel E. Morris
Mr. and Mrs. Danny Murphy
Mr. and Mrs. Perry Mustian
Mr. Strick Newsom
Mr. and Mrs. Joseph P. Noble
Mr. and Mrs. Charles Olson
Dr. and Mrs. Steve Ostrov
Mr. and Mrs. Richard Parker
Mr. and Mrs. Timothy B. Pirrung
Mr. Howard E. Poitevint
Mr. David Rivenbark
Mr. and Mrs. Richard W. Roberts
Mr. Raleigh Rollins
Mr. Johnny L. Russell
Dr. and Mrs. John Sanders
Benton S. Satterfield, M.D.
Mr. James L. Schortemeyer

Mrs. Kathleen R. Scott
Mr. John G. Shaw
Dr. and Mrs. Terry W. Sherraden
Mr. Drane Smith
Mr. and Mrs. John A. Smith
Robert M. Snider, M.D.
Mr. Warren Stafford
Mr. Lee Stone
Mr. and Mrs. Bill Terry
Mr. Theodore F. Thomas, Jr.
Tudor Farms
Dr. Ben M. Turner
Mr. Lewis C. Tyus, Jr.
Ms. Virginia A. Vail
Rep. Michelle R. Vasilinda
Mrs. Kathleen Vignos Folsom
Mr. Mike Wachholz
Mr. and Mrs. Ebe Walter
Mr. Jody Walthall and Ms. Donna Legare
Mr. Robert N. Walthall
Mr. William R. Watson
Mr. Billye L. West
Mr. E. John Wheelchel
Mr. and Mrs. Brent Widener
Mrs. Richard L. Wilhelmy
Mr. Myron Williams
Mr. Palmer Williams
Dr. and Mrs. Fremont P. Wirth
Mr. Gerald R. Wolsfelt
Mr. Robert D. Woodward
Mr. and Mrs. Paul Woody
Mr. and Mrs. Paul W. Zajicek



PAMELA H. FIRMAN QUAIL MANAGEMENT RESEARCH FUND (QMR)

Anonymous
Anonymous
Mr. Gus Adams, III
Mr. John E. Akridge, III
Mr. Jeff Alexander
Dr. and Mrs. J. Galt Allee
Mr. and Mrs. Mark Anderson
Ms. Mary Alice H. Anderson
Mr. and Mrs. William H. Atwell, II
Mr. and Mrs. C. DuBose (Duby) Ausley
Mr. David Avant, III
Mr. Louis Bacon
Dr. Gail S. Baker
Mr. and Mrs. R. C. Balfour, III
Mr. and Mrs. Robert W. Balfour
Mr. James R. Ball
Mr. and Mrs. Mack Barfield
Mr. Stan Barnes
Mr. Robert E. Barnhill, Jr.
Mr. Craig Barrow, III
Mr. Ellis Barton
Mr. and Mrs. Douglas Beach
Mr. Theo B. Bean, Jr.
Mr. John P. Beasley, Sr.
Miss Wendy H. Bicknell
Mr. D. E. Billingsley
Mr. James F. Bland, III
Mr. Edward S. Bonnie
Mr. and Mrs. Allan M. Bostick Jr.
Mr. Joseph S. Brannen
Mr. and Mrs. Arden S. Brown
Mr. and Mrs. Joe E. Brown
Mr. Willard W. Brown, Jr.
Mr. W. Wheeler Bryan
Mr. and Mrs. J. R. Bryant, Jr.
Mrs. Woodward Burgert
Mr. Robert F. Burgin, III
Mr. Harry Burn, III
C. W. Roberts Contracting, Inc.
Mr. L. Hardwick Caldwell
Mr. and Mrs. Tom Callaway
Dr. J. H. Carter, III
Cash Gifts
Mr. and Mrs. Roger Champion
Mr. Christopher Chubb
Mr. Percy Chubb, III
Mr. and Mrs. Thomas C. Chubb, III
Judge James L. Cline, Jr.
Mr. Eric Cohen
Mr. and Mrs. William D. Colledge
Mr. Leon H. Corbett, III
Mr. and Mrs. Richard A. Corbett
Mrs. Bethany H. Corum
Mr. Dale C. Critz
Mr. and Mrs. Steve Cutright

Mr. John N. Daniel
Mr. and Mrs. Joseph H. Davenport, III
Dr. and Mrs. Gene L. Davidson
Mr. Asa Davis
Mr. and Mrs. Don Davis
Mr. and Mrs. Edward A. Davis, Jr.
J. Daniel Davis, M.D.
Dr. John B. Davis, Jr.
Mr. Oscar S. Davis
Mr. and Mrs. Walt Davis
Mr. and Mrs. Stanley Defnall
Mr. Thomas R. Devlin
Ms. Marion S. Drake
Duck Haven Gun Club
Mr. Charles A. Duggan, Jr.
Mr. Edward Epp
Mr. Chester W. Fannon, Jr.
William Stamps Farish Fund
Mr. Philip Faulk
Mr. Edgar Faust
Mr. Monty C. Ferrell
Firman Fund
Ms. Susan M. Fitzgerald
Mr. Brian Fletcher
Mr. and Mrs. Lawrence Flinn, Jr.
Mr. and Mrs. Langdon S. Flowers, III
Mr. and Mrs. C. David Fonvielle
Mr. Todd Ford
Ms. Carol A. Forthman
Dr. T. Gray Fountain
Mr. and Mrs. E. C. Franklin
Mr. John Fuller
Miss Patricia Gainey
Mr. Zach Galloway

Mr. Greg Gaston
Georgia Forestry Association
Mr. Ryan Giddens
Golden Brothers Company, Inc.
Mr. and Mrs. Philo T. Grant
Mr. Charles Grantham
Mr. Sanders Grantham
Mr. Terence M. Graunke
Mr. and Mrs. Lane Green
Mr. Michael B. Greene
Mr. and Mrs. Ralph G. Greene
Mr. George F. Grimsley
Mr. and Mrs. James Groover, Jr.
Mr. Greg Hagar
Dr. and Mrs. Lynn Hagood
Mr. and Mrs. Greg Hamil
Mr. and Mrs. Frederic C. Hamilton, Sr.
Mr. Dan W. Hammack, Jr.
Mr. Matthew Haney
Mr. David H. Hardin
Mr. Henry J. Harper
Mr. and Mrs. Michael S. Hartman
Mr. Jay C. Harvard
Mr. J. Madden Hatcher, Jr.
Mr. Mason Hawkins
Mr. Peter A. Hays
Dr. and Mrs. Rudolf Hehn
Mr. Robert K. Henderson
Mr. Nathan V. Hendricks, III
Mr. and Mrs. Don P. Hicks
Dr. Jack B. Hobson
Reverend David G. Hortin
Mr. and Mrs. Sloan Howard
Dr. Joseph R. Hughes, III



At right, on one of the field stops, land manager, John Fuller, discusses management on Cherokee Plantation one of the premier private shooting plantations in the Red Hills, and the location of the 2012 Tall Timbers Fall Field Day.

Mr. John K. Humphress
Mr. William J. Hurst
Kate Ireland Foundation
Mr. and Mrs. Melville H. Ireland, Jr.
Mr. Robert L. Ireland Jr.
J. Crisp Enterprises, LLC
Mr. Christopher A. Jarrett
Mr. Robert Jenkins
Mr. and Mrs. Rhett Johnson
Mr. and Mrs. Richard H. Johnson
Mr. and Mrs. Chad Jones
Mr. and Mrs. Samuel B. Kellett, Sr.
Mr. Irv Kenyon
Dr. and Mrs. Ben Kirbo
Mr. and Mrs. Rip Kirby
Mr. and Mrs. W. Gates Kirkham
Mr. and Mrs. Bryan F. Knox
Kohler & Associates LLC
Mr. John E. Ladson, III
Mr. and Mrs. Gary Landrum
Mr. Ira Lee, Jr.
Mr. Michael J. Lee
Mr. William M. Lee
Mr. Ken Legette
Mr. Fred Leggett
Dr. and Mrs. John R. Lewis, Ph.D.
Dr. J. Leonard Lichtenfeld and Dr. Sandra B. Reed-
Lichtenfeld
Mr. Robert E. Livingston, III
Mr. James A. Lockwood
Dr. and Mrs. Charles G. Long
Mr. Michael C. Long
Dr. and Mrs. William D. Long
Mandalay Partnership, LLC
Mr. and Mrs. Phillip L. Martin
Mr. William A. Martin
Mr. Charles G. McDaniel
Mr. and Mrs. Mark E. McEwen
Mr. L. R. McGowan
Mr. and Mrs. Ted McGraw
Mr. and Mrs. Robert R. McLendon
Mr. Andy McMullian, III
Ms. Constance M. Middleton
Mr. David J. Middleton
Mr. and Mrs. David J. Middleton
Mr. and Mrs. E. Vann Middleton
Dr. and Mrs. Karl Miller
Dr. Oscar M. Mims
Mr. and Mrs. Emmett Mitchell, III
Mr. and Mrs. Ed Moody
Arthur V. Moore, D.V.M.
Ms. Julie H. Moore
Moore and Porter of Thomasville
Mr. and Mrs. Nigel E. Morris
Mr. and Mrs. Danny Murphy
Mrs. Betty C. Neill
Mr. and Mrs. Charles Newlin, Jr.

Mr. Hamlet T. Newsom, Jr.
Mr. and Mrs. Charles Olson
Mr. and Mrs. Albert M. Park
Mr. Mitch Parker
Mr. William L. Parker
Parker Poe Charitable Trust
Pinckney Hill Farm
Mr. David B. Poole
Mr. and Mrs. Clifford M. Preston
Private Forester, Inc.
Mr. and Mrs. Randall
Mr. and Mrs. Tom L. Rankin
Mr. and Dr. Maitland R.
Remington, Jr.
Mr. Tommy M. Rhodes
Mr. Chuck Ribelin
Rio Chiquito Farm, Inc.
Mr. David Rivenbark
River Ridge Plantation
Mr. Sonny Roberts
Ms. Rosalie Rodriguez
Mr. Raleigh Rollins
Mr. Johnny L. Russell
Dr. and Mrs. Charles R. Sanders
Mr. Heath Sanders
Dr. and Mrs. John Sanders
Benton S. Satterfield, M.D.
Mr. Kerryn Seward
Mr. Terry L. Sharpe
Mr. John G. Shaw
Dr. and Mrs. George W. Simmons
Mr. Fain Slaughter
Mr. Drane Smith
Mr. Hill Smith
Mr. and Mrs. J. Vereen Smith
Mr. and Mrs. John A. Smith
Dr. Terry Smith
Robert M. Snider, M.D.
South Georgia Outdoors, LLC
Mr. and Mrs. Lewis M. Stewart, Jr.
Mr. Lee Stone
Mr. Del Suggs and Mrs. Denice D. Jones
Dr. and Mrs. Brian Szwarc
Mr. and Mrs. Reggie Thackston
The Perkins Charitable Foundation
Mr. Theodore F. Thomas, Jr.
Tradeland Investors, Inc.
Tudor Farms
Mr. David M. Turner
Mr. R. Beau Turner
Mr. Ty Turner
Mr. Lewis Tyus, Sr.
Mr. Lewis C. Tyus, Jr.
Mr. Samuel E. Upchurch Jr.
Mr. and Mrs. Thomas V. H. Vail
Mr. and Mrs. Richard S. Vann
Rep. Michelle R. Vasilinda



Left to right, Frank Wetherbee with Albany Quail Project Director Clay Sisson during the annual quail hunt on Gravel Hill. Frank worked one summer while in forestry school with Herbert Stoddard and Leon Neel in Thomasville and is a prominent landowner in the Albany Area.

Mr. Vic Venters
Mrs. Emily (Mrs. Jeptha) V. Wade
Mr. and Mrs. John B. Wagner
Mr. Richard B. Wagner
Mr. and Mrs. Wayne Waldrep
Mr. Robert N. Walthall
Mr. James W. Warren, Jr.
Mr. and Mrs. George C. Watkins
Mr. Miles B. Watkins
Mr. William R. Watson
Dr. and Mrs. Philip C. Watt
Mr. Richard D. Webb
Dr. and Mrs. Howard S. Weldon, Jr.
Mr. and Mrs. Dale Wellendorf
Mr. Billye L. West
Mr. Parker Westbrook
Mr. Roland Wetherbee
Mr. E. John Wheelchel
Mr. and Mrs. Orin White
Dr. and Mrs. Dale A. Wickstrum
Mr. and Mrs. Brent Widener
Mr. and Mrs. Blair Williams
Mrs. Marianne J. Williams
Mr. Myron Williams
Mr. Palmer Williams
Mr. and Mrs. Bob Williamson
Mr. and Mrs. Jerry Williamson
Mr. Bryan Willis
Mr. W. Bryan Willis
Mr. Christopher K. Wilson
Dr. and Mrs. Fremont P. Wirth
Mr. John S. Wise
Mr. and Mrs. Peter Wolsfelt
Mr. and Mrs. C. Martin Wood, III
Mr. Robert D. Woodward
Mr. and Mrs. Paul Woody
Mr. Mark A. Worthey
Mr. and Mrs. Paul W. Zajicek

GAME BIRD PROGRAM GENERAL SUPPORT

Mr. Gregory Callimanopulos
Mr. A. Bliss McCrum
The Moore Charitable Foundation
Mr. Donal C. O'Brien
Mr. and Mrs. John E. Phipps

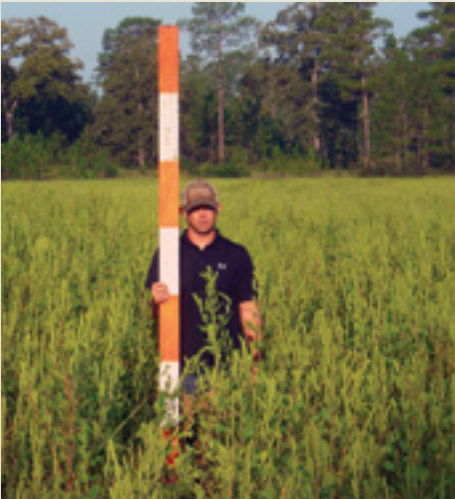
ALBANY QUAIL PROJECT

Becker Trading Company
Mr. and Mrs. Tom Bradbury
CEC Georgia Properties, LLC
Chokee Plantation
Mr. A. J. Clark
Mr. and Mrs. Richard S. Cuda
Mr. and Mrs. Joseph H. Davenport, III
Deer Run Plantation
Mr. Robert S. Doochin
Mr. and Mrs. Lawrence Flinn, Jr.
Mr. Frank Foley, III
Franklin Family Farm
Mr. and Mrs. Gardiner W. Garrard, Jr.
Mr. Sammy Giddens
Mr. Mike Goodrich
Mr. Michael Hamilton
Mr. Hank Johns
Jones Family Fund
Mr. and Mrs. Eugene W. Kelly
Mr. and Mrs. Keith Kelly
Kemp Farms, LLC
Mr. William W. Kidd
Kolomoki Plantation
Nilo Plantation
Nonami Oglethorpe, LLC
Mr. Joseph K. Orr, IV
Mr. Jenks C. Parker
Pinebloom Plantation
Mr. Irvin Plowden
R. K. Mellon Family Foundation
Mr. Frank C. Robson
Senah Plantation, LLC
Southern Field Trial Club, Inc.
Mr. and Mrs. Warren Stephens
Ms. Virginia A. Swift
The Johnston Family Foundation
Mr. and Mrs. Remy Trafelet
Mr. and Mrs. Thomas V. H. Vail
Mr. and Mrs. Leslie Wexner
William Howard Flowers, Jr. Foundation, Inc.

SOUTH CAROLINA QUAIL PROJECT

Anonymous
American Forest Management
Blackwater, LLC
Mr. John Bratton, Jr.
Mr. Theodore D. Bratton, Jr.
Mr. F. L. Burke

Mr. Gregory Callimanopulos
Mr. Charles A. Carson, Jr.
Mr. John Carswell
Mr. Lamar Comalander
Mr. and Mrs. Stephen M. Creech
Mr. and Mrs. John B. Dawson
Mr. David D. Douglas
Mr. Donald E. Dyches, Jr.
Mr. Henry J. Faison
Mr. Lane Faison
Mr. William Farrior
Mr. Art Fields
Mr. Curt O. Hall
Mr. J. Roger Hammond
Mr. Edmund H. Hardy
Mr. James F. Henry, III
Mr. Hayne Hipp
Mr. Judson J. Holliday
JCK Foundation, Inc.
Mr. Mike Lockhart
Mr. H. Gordon Maxwell
Mr. Alton McCullough, Jr.
Meadwestvaco
Mr. William G. Nichols, IV
Oldfields Mulching & Stumpgrinding, LLC
Mr. John R. Parker
Mr. William H. Prestage
Quail Unlimited - South Carolina Chapter
Mr. Rick Reames
Mr. Tommy M. Rhodes
Mr. and Mrs. Nat Ruth
Mr. Winfield Sapp, Jr.
Mr. Henry Swink
Mr. Matt Taylor - Woods and Water Taxidermy
The Good Works Foundation



Sherwin Smith, biologist with the Albany Quail Project, stands in one of the weed field management study plots for brood habitat.

The Iams Company
Mr. Harry C. Tiller, Jr.

MID ATLANTIC QUAIL RESEARCH INITIATIVE

Mr. William F. D'Alonzo
Mr. John B. Long
Maryland Department of Natural Resources
Dr. Harry Sears
Washington College

UPLAND ECOSYSTEM RESTORATION PROJECT (UERP)

Florida Department of Environmental Protection
Florida Forest Service
Florida Department of Historical Resources
Florida Fish and Wildlife Conservation Commission
US Forest Service
National Fish & Wildlife Foundation



Pineland Farm was the location of the South Carolina Quail Project 2012 Fall Field Day; 150 participants were treated to a field tour of a well-managed property located in Clarendon County just outside of the low country.

FALL FIELD DAY SPONSORS

- Gem Land Company
- The Orvis Company
- AgPro Boston
- American Wildlife Enterprises
- Blanton's Longleaf
- Covey Rise Magazine
- Eukanuba
- Golden Services & Pine Straw
- Flowers Food
- Jager Pro Hog Control Systems
- Lister's Outdoor World
- Plantation Security
- Southern Forestry Consultants
- South Georgia Outdoors
- Wildlife Trends

RESEARCH PROGRAM SUPPORT



Lilly, a black lab, was donated to the Stoddard Bird Lab by Mr. Greg Oyer, the principle dog trainer at Beechwood Plantation. Jim Cox has been training her to find nests of rare ground-nesting birds such as Bachman's and Grasshopper Sparrows. Biologists have been utilizing the unique olfactory capabilities of trained detection dogs to perform a number of research and conservation tasks in recent years.

FIRE ECOLOGY PROGRAM

- Mr. Kevin Dorsey
- Mr. Jacob Dullworth
- Florida A&M
- Florida State University
- Mr. and Mrs. Ken Hart
- Joint Fire Science Program – Southern Fire Exchange
- LSU – Department of Biological Sciences
- National Science Foundation
- Dr. Gil Nelson
- Mr. James Patterson
- Mr. and Mrs. John E. Phipps
- Miss Eden Robertson
- Mrs. Christine Sloan
- Mr. Michael Sickler
- Mr. Michael Wetzel



At left, at the 2012 Tall Timbers Fall Field Day, Dr. Steve Conlin, the president of Gem Land Company, owners of Cherokee Plantation, discussed the history and management goals of this premiere 7000-acre quail hunting property in northeastern Leon County that has a rich tradition dating back to the early 1900s.

OUTREACH & EDUCATION PROGRAM SUPPORT

- Anonymous
- Community Foundation of South Georgia – Cherokee Foundation
- Mr. William D'Alonzo
- Gem Land Company
- The Orvis Company
- Mr. and Mrs. John E. Phipps
- Dr. Harry Sears
- Washington College

JIM WALTER LODGE

- Anonymous
- The Orvis Company
- C W Roberts Contracting
- Mr. Ken Silvestri
- Mr. and Mrs. Ebe Walter

PARKER - WILLIAMS LIBRARY

- Mrs. Endicott P. Davison
- Joint Fire Science Program
- Mr. Ron Kanen
- US Forest Service
- US Fish & Wildlife Service
- National Park Service



Fire Ecology intern Devon Joseph mopping up during the prescribed burn of the Wade Tract Preserve in 2012.

LAND CONSERVANCY DONORS

GENERAL PROGRAM SUPPORT

- The Elisha Bolton Foundation – Mrs. Betsy Schafer
- The William Howard Flowers, Jr. Foundation, Inc.
- The Georgia Power Foundation, Inc.
- Gulf Winds Track Club
- The Claire H.B. Jonklaas Foundation – Mr. Anthony Jonklaas
- Dr. and Mrs. Ben Kirbo
- The Perkins Charitable Foundation
- Mrs. Sallie P. Sullivan
- Turner Foundation, Inc.

RED HILLS EASEMENT & STEWARDSHIP FUND

- Mr. James Dahl
- Mr. David H. Davidson
- Mr. John L. Davidson
- Dr. C. Linden Davidson
- Mr. William DuPre, IV
- Merrily Plantation, Inc.
- Mrs. Lela McCarty Mitchell
- Red Hills Properties, LLC
- Shade Farm Properties, LLC
- Mrs. Janet King Sheldon
- Sunny Hill Plantation, LC

RED HILLS PLANNING COORDINATOR POSITION

- Mrs. Robert P. Crozer, Sr.
- Mr. Howell Ferguson and Dr. Sharon Maxwell Ferguson
- Turner Foundation, Inc.
- Mr. and Mrs. George Watkins
- Williams Family Foundation of Georgia, Inc.
- Mr. and Mrs. C. Martin Wood, III

RED HILLS DEFENSE FUND

- The William Howard Flowers, Jr. Foundation, Inc.



At left, recyclables collected at the Ochlockonee River Clean-up; at right, Tall Timbers Conservation Coordinator Shane Wellendorf with the biggest catch of the day, a 16-foot boat. The Ochlockonee River Clean-up has been coordinated by TTLC planning staff for the past eight years. This annual event is one of the largest volunteer opportunities in Thomas County. More than 70 volunteers helped in 2012 providing us with a great chance to talk about the importance of protecting water quality in the Red Hills. Over the years more than 40,000 pounds of trash have been removed from the Ochlockonee River floodplain, a key natural resource in the Red Hills and a designated Outstanding Florida Waterbody.

The Tall Timbers Land Conservancy educates about conserving the region at several events during the year

While the focus of work at the Tall Timbers Land Conservancy (TTLC) is on land conservation, land use planning, and advocacy, TTLC is also involved in efforts to educate the public about the importance of the Red Hills region and why it is deserving of protection.



On October 13, 2012, the 5th annual Pine Run 20K took place at Tall Timbers. More than 200 runners set out on the challenging 12.4 mile course with 192 eventually finishing the event. This race provided a rare opportunity for a small segment of the public to see Tall Timbers in a way that few people do. Both Tall Timbers and the Gulf Winds Track Club, the race sponsor, benefit from the relationship we have developed. The Pine Run 20K has become one of the most popular long distance trail races sponsored by Gulf Winds. Tall Timbers meanwhile has benefitted from excellent media attention and networking opportunities, gained additional members, and received annual financial contributions from Gulf Winds Track Club.



TALL TIMBERS FOUNDATION

The Tall Timbers Foundation manages the Tall Timbers Endowment Funds, those long-term assests that help fund research, conservation and support programs at Tall Timbers.

TALL TIMBERS ENDOWMENT FUND CONTRIBUTORS

Anonymous
Anonymous
Anonymous
Mrs. Kathy A. Archibald
The Archibald Foundation
Miss Wendy Bicknell
Dr. and Mrs. Wes Burger
Mr. and Mrs. Charles M. Chapin, III
Mr. and Mrs. Russell Chubb
Mr. and Mrs. Richard A. Corbett
Mr. and Mrs. Edward A. Davis
The Firman Fund
Dr. and Mrs. Charles E. Hancock, Jr.
Mr. and Mrs. Ken Hart
Mr. and Mrs. Dwayne Hoven
The Gilbert W. & Louise Ireland Humphrey Foundation
Louise H. and David S. Ingalls Foundation
Mr. and Mrs. Rhett Johnson
Mr. Harry T. Jones, III
Mr. and Mrs. Powell Jones
Mr. and Mrs. Melville H. Ireland, Jr.
Kate Ireland Foundation
Mr. Robert L. Ireland, IV
Mr. and Mrs. Samuel B. Kellett, Sr.
Mr. and Mrs. Robert H. Kirby
Lanigan & Associates
Mr. and Mrs. Bernard Lanigan, Jr.
Dr. John R. Lewis
The Orvis Company
Parker Poe Charitable Trust
Mr. and Mrs. David D. Perkins
Mr. Leigh H. Perkins, Jr.
Miss Mary Branch Perkins
Mr. and Mrs. Colin Phipps
Mr. and Mrs. Tim Phipps
Mr. and Mrs. Tim Pirrung
Mr. and Mrs. Tom Rankin
Mr. and Mrs. Samuel Scovil
Dr. and Mrs. George Simmons
Mr. and Mrs. Warren Stephens
Mr. and Mrs. Witt Stephens, Jr.
Mr. and Mrs. J. Ben Watkins
Mr. and Mrs. George C. Watkins
Mr. and Mrs. Robert C. Webster, Jr.
The Mildred Witt Estate
Mr. and Mrs. C. Martin Wood, III



At the 2012 Naturalists’ Ball, Tom Rankin and Daphne Wood, co-chairs of the Endowment Campaign, announced that over \$9 million in cash and pledges had been raised for the benefit of the Tall Timbers Foundation.

2012 NATURALISTS’ BALL UNDERWRITERS

Sallie and Duby Ausley
Capital City Bank
Mr. and Mrs. Charles M. Chapin, III
Mr. and Mrs. Russell Chubb
Mr. and Mrs. Richard A. Corbett
Mr. and Mrs. Edward A. Davis
Mr. and Mrs. John Fort
Mr. and Mrs. Mason Hawkins
Horseshoe Plantation
Mrs. Gilbert W. Humphrey
Mr. and Mrs. George R. Langford, Sr.
Mr. Anthony Jonklaas
North Florida Animal Hospital
Diane Williams Parker
Parker Poe Charitable Trust
Mr. and Mrs. Leigh H. Perkins, Sr.
Mr. and Mrs. John E. Phipps
Kay and Tom Rankin
Carol and Witt Stephens, Jr.
Thomas V.H. & Iris J. Vail
Cyndi and George Watkins
Mrs. Robert C. Webster, Jr.
Mr. and Mrs. C. Martin Wood, III

2012 KATE IRELAND MEMORIAL AUCTION & GOLF TOURNAMENT

Alexander and Vann
Allen, Mooney & Barnes
Archbold Medical Center
Mrs. Kathy R. Archibald
Mr. and Mrs. Rich Arroll
Mr. David Avant, III
Awards 4U
Badcock Home Furnishings
Betsy Barfield Photography
Mr. and Mrs. Warren Bicknell, III
Dr. and Mrs. Robert Bradford
Bradley’s Country Store

Mr. and Mrs. Hal Brannen
Mr. Thomas Brooks
Browning - Winchester
Mr. and Mrs. Craig A. Bruner
Camp Hospitality, Inc.
Capital City Bank
Capital Health Plan
Mr. R. R. M. Carpenter
Mr. and Mrs. Wilson Carraway
Mr. and Mrs. Charles M. Chapin, III
Childers Constrauction
Mr. Christopher Chubb
Chubb Associates LTD/Realtors
Mr. Bill Connally
Mr. and Mrs. Richard A. Corbett
Covey Rise
Mr. Cader B. Cox, III
Mr. Bill Dahl
Mr. James H. Dahl
Mr. and Mrs. Edward A. Davis, Jr.
Dr. John B. Davis, Jr.
Ms. Judy R. Davis
Elberta Crate & Box Company
Esposito’s Florist & Gifts
Mrs. Ali G. Flota
Mr. John P. Fort
Mr. and Mrs. Ray Gainey
Gandy Printers
Granddaddy’s Bar-B-Q
Mr. and Mrs. Philo T. Grant
Mr. Benson T. Green
Anjannett G. Griffin
Mr. and Mrs. Frederic C. Hamilton, Sr.
Healthy Solutions Weight Loss
Mr. and Mrs. Jim Hendricks
Highland Associates, Inc.
Hotel Duval
Mr. William J. Hurst
Mr. Redmond S. Ingalls

Mr. and Mrs. John Ingle
J. Smith Lanier & Co., Inc.
Jonah’s Fish & Grits Restaurant
Mr. Harry T. Jones, III
Mr. and Mrs. Kevin Kelly
Mr. and Mrs. Rip Kirby
Mr. Jonathan Kohler
Mr. Alan Lamarche
Mr. and Mrs. William C. Lamb, Jr.
Mr. David Lanier
Lanigan & Associates
Mr. and Mrs. J. Philip Leabo, Sr.
Mr. Bradford R. Lewis
Dr. and Mrs. John R. Lewis, Ph.D.
Mr. and Mrs. Ben W. McCollum
Mr. Kevin McGorty
Mr. Hunter McIntosch
Mr. M. C. McNeill, III
Mr. Walter E. Melton, Jr.
Mr. and Mrs. Frank Mercer
Meta Day Spa
Mr. and Mrs. Emmett Mitchell, III
Monticello Nurseries, LLC
Mr. Chick’s Restaurant
Murphy, Middleton, Hinkle & Parker
Mystic Pines Kennels
Native Nurseries of Tallahassee, Inc
Dr. Gil Nelson
Nic’s Toggery
Olson Architects, Inc.
Olson Insurance and Financial Services
Mrs. D. Williams Parker
Parker Poe Charitable Trust
Mr. and Mrs. John Pettit
Mr. John E. Phipps
Mr. and Mrs. Timothy B. Pirrung
Plantation Services, Inc.
Mr. Phillip Pomeroy
Premier Health & Fitness Center
Prime Meridian Bank
Mr. Brian Proctor

Ms. Melissa Proctor
Mr. and Mrs. Tom L. Rankin
Mr. Ben Reichenau
Dr. James W. Reid Jr.
Mr. Charles W. Roberts, III
Mr. Theo Rumble Jr.
Signature Gallery
Dr. and Mrs. George W. Simmons
Mr. and Mrs. Douglas W. Smith
Mr. Drane Smith
Dr. Terry Smith
Sonny’s Bar-B-Q
South Georgia Outdoors, LLC
Southern Forestry Consultants
Southern Seafood
Southwest Georgia Technical College
Southwood Golf Club
Mr. and Mrs. Warren Stephens
Mr. and Mrs. Witt R. Stephens, Jr.
Sunshine Car Care, LLC
TALCOR Commercial Real Estate Services, Inc.
Tallahassee Museum of History & Natural Science
The Gift Shop

The Orvis Company, Inc.
The Sea Island Company
Mr. and Mrs. John C. Thomas
Thomas County Federal Savings & Loan
Thomasville National Bank
Thomasville YMCA
Mr. John W. Thompson
Jerry Turner
Mr. R. E. Ted Turner
Mr. Stafan Ughetto
Wakeford & Riles Insurance Agency
Kelly Waldrop
Dr. and Mrs. James F. Walton, III
Mr. and Mrs. George C. Watkins
Mr. and Mrs. J. Ben Watkins
Ms. Peggy Watkins
Dr. and Mrs. Philip C. Watt
Mrs. Robert C. Webster, Jr.
Whitney Fletcher Photography
Wild Adventures Theme Park
Mr. and Mrs. Peter Wolsfelt
Mr. and Mrs. C. Martin Wood, III
Mr. Mark Worthy



M. H. Allen at left, and other Golf Tournament participants check-in with Tall Timbers Admristrative Assistants Starr Askew, far right, and Lisa Baggett before the shot-gun start.

Memorials

IN MEMORY OF BROOKE BRESLIN

Ms. Janie E. Atkins
Mr. Paul W. Bonomo
Mr. Clifford S. Bristol
Mr. Bolling Brooks
Capital City Trust Company
Mrs. Jodi L. Chase
Mr. Bill Corry
Mr. David M. Kirkland Insurance, LLC
Ms. Peyton C. Deison
Ms. Lisa M. Lemaster
Mr. George W. Mason

Mr. Virgil Mayo
Mrs. Lynne M. Moeller
New South Homes, Inc.
Mrs. Minnie H. Rast
Mr. Jim G. Rathbun
Mr. Michael A. Renwick
Mr. and Mrs. Pat Roberts
Mr. James W. Sloan
Mrs. Frances B. Snyder
Mr. Guy M. Spearman
Ms. Nancy B. Stewart
Mr. Marvin L. Williams

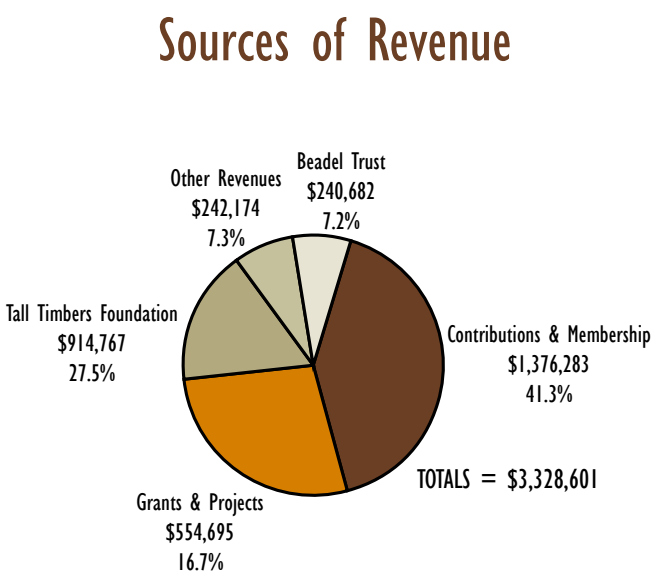
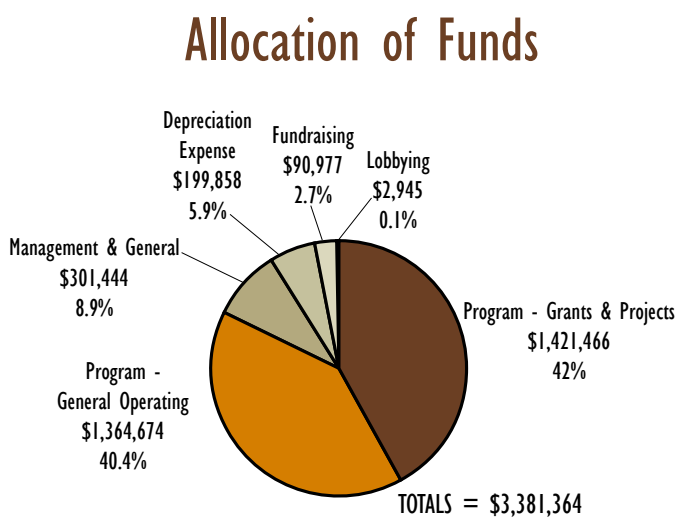
BEADEL HOUSE MEMORIALS

Mr. Jack B. Gaskin *in memory of Thomas Lance Smith*
Mr. and Mrs William F. Ladson *in honor of Mr. and Mrs. Ebe Walter*
Ms. Diane Williams Parker *in memory of Mr. Earl Bennett*
Mrs. Drucilla Bennett *in memory of Mr. Earl Bennett*
Pinckney Hill Farm *in memory of Mrs. Gilbert W. Humphrey*
Mrs. Robert C. Webster, Jr. *in memory of Mrs. Gilbert W. Humphrey*
Mr. and Mrs. Thomas V. H. Vail *in memory of Mrs. Gilbert W. Humphrey*

Statement of Financial Position

TALL TIMBERS RESEARCH, INC.

	TOTAL ALL FUNDS	TOTAL ALL FUNDS
ASSETS	12/31/2012	12/31/2011
Current Assets		
Cash & Cash Equivalents	\$1,015,359	\$853,587
Accounts Receivable	4,619	36,788
Grants/Projects Receivable	183,146	119,268
Pledges Receivable (Net)	63,261	160,014
Due from Tall Timbers Foundation, Inc. (Net)	32,223	109,116
Prepaid Expenses	54,412	58,284
Total Current Assets	\$1,353,020	\$1,337,057
Property & Equipment		
At Cost less Accumulated Depreciation	4,915,832	\$4,949,755
Other Assets	33,889	33,889
TOTAL ALL ASSETS	\$6,302,741	\$6,320,701
LIABILITIES & NET ASSETS		
Current Liabilities		
Accounts Payable	\$56,726	29,865
Accrued Liabilities	47,830	31,324
Notes Payable	33,782	43,748
Deferred Revenue	21,304	19,902
Total Liabilities	\$159,642	\$124,839
NET ASSETS		
Unrestricted	4,941,124	4,908,827
Temporarily Restricted	827,851	912,911
Permanently Restricted	374,124	374,124
Total Net Assets	6,143,099	6,195,862
TOTAL LIABILITIES & NET ASSETS	6,302,741	\$6,320,701



2012 Staff & Associates

ADMINISTRATION

Lane Green, Executive Director (retired December 13)
William E. Palmer, PhD, President/CEO (beginning mid-December)
Melissa Proctor, Contoller
Vicki Sellars, Asst. Controller (P/T through March)
Dana Strickland, Senior Administrative Assistant

OPERATIONS & SUPPORT

Vann Middleton, Director of Development, Operations & Support
Starr Askew, Administrative Assistant
Curtis Johnson, Facilities Manager

Information Services

Rose Rodriguez, Information Services Manager
Carol Armstrong Kimball, Librarian*
Lisa Baggett, Administrative Assistant
Faye Salis, P/T Library Assistant*
Juanita Whiddon, P/T Archives, Records Management & Historical Resources

Outreach & Education

Theron Terhune, PhD, Outreach & Education Coordinator
Joe Noble, Technology Transfer Specialist*

RESEARCH & LAND MANAGEMENT

Ronald E. Masters, PhD, Director of Research (through March)
William E. Palmer, PhD, Director of Research (beginning April)
 Robert C. Balfour, Jr., Game Bird Management Research Fellow
Allan (Bud) Bostick, Biologist, Game Bird Research*
Sarah K. Brown, Technician, Upland Ecosystem Restoration Project
Jim Cox, Research Scientist, Vertebrate Ecology
Kaye Gainey, Research Department Coordinator
Jonathan Garrow, Technician, Game Bird Research*
David R. Godwin, PhD Candidate, Fire Ecology, University of Florida*
Jerome Golden, Forest Operations Manager
Greg Hagan, Coordinator, Upland Ecosystem Restoration Project*
Tracy Hmeilowski, PhD Candidate, Fire Ecology, Louisiana State University
Jesse Kamps, Technician, Game Bird Research
Matthew R. Klostermann, Technician, Vertebrate Ecology
Claudia Listopad, PhD Candidate, Forestry, University of Central Florida
Kellie Phillips, Technician, Game Bird Research*
Angie Reid, Fire Ecology Specialist
Kevin M. Robertson, PhD, Research Scientist, Fire Ecology
Elliott Schunke, Technician, Vertebrate Ecology
Jerald Sholar, Director, South Carolina Game Bird Project*
Clay Sisson, Director, Albany Quail Project
Sherwin Smith, Biologist, Albany Quail Project
Eric Staller, Natural Resources Coordinator

RESEARCH INTERNS

Rachel Atkinson, FL, Vertebrate Ecology Research
Rachel Burnett, FL, Fire Ecology Research
Marissa Cunningham, FL, Fire Ecology Research
John DeCotis, GA, Game Bird Research
Julia Guyton, FL, Game Bird Research

Devon Joseph, FL, Fire Ecology
Brent Mills, NC, Game Bird Research
Alan Moss, FL, Vertebrate Ecology
Taylor Seamon, FL, Outreach & Education
Nikki Stenner, SC, South Carolina Quail Project
William “Seth” Wood, AL, Game Bird Research

TALL TIMBERS LAND CONSERVANCY

Kevin McGorty, Director
Neil Fleckenstein, Planning Coordinator
Jennifer Roberts, Administrative Assistant (beginning May)
Kim Sash, Conservation Biologist*
Shane D. Wellendorf, Conservation Coordinator
Esther Widener, Administrative Assistant (through April)

PARTNERS

Forest Service
Erica Taecker, Fire Ecologist, Southern Region

National Park Service
Caroline Noble, Regional Fire Ecologist

RESEARCH ASSOCIATES

James Martin, PhD, Department of Wildlife and Fisheries, Mississippi State University
John Carroll, PhD, Warnell School of Forestry, University of Georgia
Andre F. Clewell, PhD, Botanist, Ellenton, FL
Robert Cooper, PhD, Warnell School of Forestry, University of Georgia
R. Todd Engstrom, PhD, Vertebrate Ecology
Jeff Glitzenstein, PhD, Fire Ecology
Craig Guyer, PhD, Department of Biological Sciences, Auburn University
Sharon M. Hermann, Department of Biological Sciences, Auburn University
David Ligon, PhD, University of New Mexico
Sandra Ligon, PhD, University of New Mexico
Bruce Means, PhD, Coastal Plains Institute
W. J. Platt, PhD, Louisiana State University
Donna Streng, PhD, Fire Ecology

BEADEL FELLOWS

Jeff Glitzenstein, PhD
Gil Nelson, PhD
W. J. Platt, PhD
Donna Streng, PhD

*Grant funded position
P/T = part-time



At far right, Tall Timbers land manager, Eric Staller, leads a wagon tour at the 2012 Open House.



Tall Timbers Research Station & Land Conservancy
13093 Henry Beadel Drive
Tallahassee, FL 32312
850/893-4153 PH
850/893-6470 FAX
www.talltimbers.org

ADDRESS SERVICE REQUESTED

Non-profit Org.
U.S. POSTAGE
PAID
Permit No. 236
Tallahassee, FL

Tall Timbers Research, Inc.
is a charitable,
tax-exempt organization
specializing in
research, conservation and education.
Established 1958.

Stewards of Wildlife & Wildlands



ANNUAL REPORT EDITING & DESIGN - ROSE RODRIGUEZ



PRINTED ON RECYCLED PAPER

Outreach & Education continued from page 13

Technology Transfer

In 2012, two major Information Technology projects were completed. A new virtual server infrastructure was implemented and a GIS Enterprise database was established to better facilitate data exchange among staff, research collaborators, federal and state cooperators, landowners and land managers. Server virtualization and the creation of a GIS

Enterprise database will provide the necessary framework to develop land management tools and facilitate field data collection using mobile devices. In addition to the completion of these projects, the initiation of two major endeavors began: the restructuring of the weather station database and a station-wide internet upgrade. These projects will be a focus for 2013 and will substantially improve collaborative opportunities such as distance (on-line) learning.