



TALL TIMBERS

Research Station & Land Conservancy

Annual Report 2014



Mission

The mission of Tall Timbers Research Station & Land Conservancy is to foster exemplary land stewardship through research, conservation and education. Our primary research focus is the ecology of fire and natural resource management including bobwhite quail and other wildlife in the southeastern coastal plain. Our conservation efforts are dedicated to helping protect the distinctive Red Hills landscape of south Georgia and north Florida, and its traditional land uses. Our education program transfers research and conservation information for resource management.



President's Report

By Bill Palmer, PhD, President & CEO

Connections are important for Tall Timbers—in 2014 we strengthened them—to strengthen our research and conservation programs. We are building new connections that bolster our ability to conduct sound science and answer pressing conservation questions, to protect key conservation values of the Greater Red Hills, and to add new members to Tall Timbers. By being a partner to other organizations, as well as a leader, we get more done and have broader impact!

We increased our exposure to surrounding communities through the Greater Red Hills Awareness Initiative. By partnering with those that care about the region, we are building pride for protection of the Red Hills and Albany regions. We had more positive press about the Red Hills in 2014, and Tall Timbers, than in the last 10 years combined!

Our staff works closely with community leaders to help plan for a sustainable future. Part of that is demonstrating how the wildlife lands of the Greater Red Hills are self-supporting and economically and ecologically vital to our communities. We took steps toward a broader vision for our conservation program, and in 2015, we will be sharpening our conservation tool box by reaching out to more partners to find innovative ways to protect the Greater Red Hills Region.

Research produces reliable knowledge and that is critical to Tall Timbers history and future. Part and parcel with research is training young professionals who become decision

makers, scientists, teachers, and managers. Our past graduate students are now professors at major land grant universities, and biologists in state agencies where they expand the reach of Tall Timbers mission. This is powerful—a vital research program that teaches sound management will be reflected in their careers.

We also connect with the leaders of land management agencies in Florida and Georgia, and university professors and administrators. In 2014, we renewed and strengthened our working relationship with other agencies, universities, and NGOs to increase better stewardship of our public lands. Probably most importantly, our outreach programs connect with landowners and land managers whose actions influence the land. Collectively, Tall Timbers is elevating its mission by being strategic with its connections—but staying focused on its core mission—research and conservation of the land.



Representatives from the Florida/Georgia Quail Coalition, L-R: Howard Vincent, Pheasants/Quail Forever; Dan Forster, GADNR; Nick Wiley, FWC and Bill Palmer, Tall Timbers celebrated the partnership agreement in April 2014, at Tall Timbers.

Chairman's Message

By Cornelia G. Corbett, Chairman

The success of Tall Timbers is largely due to the great work of our dedicated staff, past, present and future! One of my goals during my tenure as chairman is to build the capacity of the organization to ensure our staff has the resources to continue to protect the region AND find innovative solutions to the regional conservation issues. As a board, we are committed to growing our endowments, members, and partners.

Membership is important to Tall Timbers. We need you; our members not only help fund our work, but to apply our conservation and management information on your land, or in your jobs. That effort will help us achieve our mission and in general will enhance the whole Red Hills region. In 2014 we greatly increased our membership and fundraising efforts. We redesigned our membership program by adding new levels and benefits to encourage more folks to join and to attract the leaders of the future generation. We added new media, such as the *Tall Timbers eJournal*, an online magazine, which provides members with longer, more in-depth articles offering a better view of our programs. We also partnered with other organizations to educate the public not only on the importance of the Red Hills but why it is critically important to protect these lands.

Tall Timbers made great strides in building financial AND research capacity in 2014. The largest gift in our history was contributed to Tall Timbers—Dixie Plantation!! Talk about building capacity—THAT is building capacity!!! We also kicked off an effort to increase our Fire Ecology Endowment to reach a goal of two million dollars. We are more than half way there. Prescribed fire is at the heart of every program at Tall Timbers and it is what keeps the Red Hills healthy!

This is a time for our organization to think big! There is still so much to do and information and research to publish and distribute. As we build our capacity, we accept the responsibility to continue to do good work with your donations. To that end, our board and staff will participate in a strategic planning effort in 2015. The Board is determined to have Tall Timbers be all it can be. Stay tuned!!



Tall Timbers Research, Inc. 2014 Board of Trustees

Chairman
Mrs. Cornelia G. Corbett

Vice-Chairmen
Mr. David D. Perkins

Secretary
Mrs. Daphne F. Wood

Treasurer
Mr. Tom L. Rankin

Trustees
Mr. Charles M. Chapin III
Mr. Ward Davenport
Mrs. Rosamond C. Davis
Mr. Kenneth D. Haddad
Mr. O. Mason Hawkins
Mr. Redmond Ingalls
Mr. Rhett Johnson
Mr. Robert H. (Rip) Kirby
Mr. John Wesley Langdale III
Dr. Karl Miller, PhD
Mr. Timothy B. Pirrung
Dr. George W. Simmons
Mr. Reggie E. Thackston
Mr. John Thompson
Mr. Ebe Walter
Mr. George Watkins
Mrs. Robert C. Webster Jr.
Mrs. Virginia Wetherell



2015 TALL TIMBERS BOARD OF TRUSTEES Seated L-R: Charlie Chapin, Daphne Wood, Cornelia Corbett, Mason Hawkins, Rozzie Davis, and Ken Haddad. Standing L-R: George Simmons, John Thompson, Redmond Ingalls, Ebe Walter, Reggie Thackston, Dave Perkins, George Watkins, Tim Pirrung, Rhett Johnson, Tom Rankin, Karl Miller, and Rip Kirby. Not pictured: Wes Langdale, Morgan Varner, Virginia Wetherell. Photo by Rose Rodriguez.

Contents

Chairman's Message.....	3
Research & Land Management.....	4
2014 Research Publications.....	4
Tall Timbers Land Conservancy.....	10
Information Resources.....	12
Dixie Plantation	13
Development & Annual Giving.....	14
Statement of Financial Position	25
2014 Staff and Associates.....	26

Research & Land Management

Tall Timbers research programs continue to inform management of fire-dependent ecosystems and species. We published 17 manuscripts in 2014 on a variety of topics that relate to fire and fire-adapted species and ecosystems. Research on the effects of fire frequency and season of fire on top-kill of hardwood re-sprouts in pine savanna systems provides new insights for managing hardwoods. Studies on particulate matter emissions is providing more accurate estimates of the effect of prescribed fire on air quality and helping to protect the right to burn.

Our regional economic impact of the quail plantations provides our planning department with powerful support for the sustainability of the greater Red Hills rural land use. In addition to these published articles, Beadel Fellow Dr. Gil Nelson co-authored two books published by Princeton University Press and released in 2014. Our scientists submitted 12 grant proposals totaling \$708,031 and five were awarded, totaling \$298,900.

Research staff served on graduate student committees at several universities in the Southeast, and made 33 scientific presentations at state, regional and national conferences, seminars or workshops. Other outreach efforts by staff include 193 activities to constituents throughout the southeast.

2014 RESEARCH PUBLICATIONS — STAFF & ASSOCIATES

Cerame, B., J.A. Cox, R.T. Brumfield, J.W. Tucker, and S.S. Taylor. 2014. Adaptation to ephemeral habitat may overcome natural barriers and severe habitat fragmentation in a fire-dependent species, the Bachman’s Sparrow (*Peucaea aestivalis*). *PloS One*, 9(9), e105782. (Peer reviewed)

Cox, James. 2014. The Thing With Feathers: The Surprising Lives of Birds and What They Reveal About Being Human Noah Strycker. 2014. Riverhead Books (Penguin Random House), New York. ix-xiv+ 288 pages. ISBN: 9781594486357. \$27.95 (Hardcover). *Journal of Field Ornithology* 85: 430-431. (Book Review)

Cox, J. A., C. J. Jones, J. W. Tucker, and G. F. Budney. 2014. An unusual song-like vocalization produced by female Bachman’s Sparrows (*Peucaea aestivalis*). *Southeastern Naturalist* 13(2): N9-N12. (Peer reviewed)

Cox, J.A. *Firebird Newsletter*. Summer 2014 (Extension).

Fleckenstein, N. 2014. *The Economic Impact of the Quail Hunting Lands of Georgia’s Greater Albany Region*. A Publication of Tall Timbers Research Station & Land Conservancy. 28 pages. (Extension).

Hmielowski, T.L., K.M. Robertson, and W.J. Platt. 2014. Influence of season and method of topkill on resprouting characteristics and biomass of *Quercus nigra* saplings from a southeastern U.S. pine-grassland ecosystem. *Plant Ecology* 215:1221-1231. (DOI 10.1007/s11258-014-0380-5) (Peer-reviewed)

Johnson, F. A., G. Hagan, W. E. Palmer and M. Kemmerer. 2014. Uncertainty, robustness, and the value of information in managing a population of northern bobwhites. *The Journal of Wildlife Management* 78 (3): 531-539. DOI: 10.1002/jwmg.682. (Peer-reviewed)

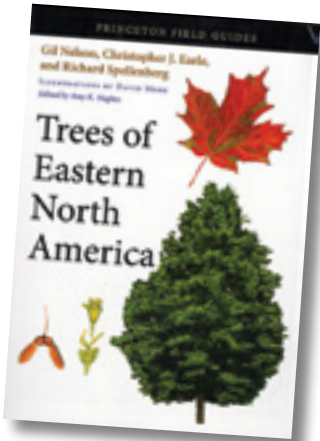
Jones, C. D., J. A. Cox, and R. J. Cooper. 2014. Bachman’s Sparrow (*Peucaea aestivalis*) response to variation in the extent of burns conducted during the nesting season. *Avian Conservation and Ecology* 9(1): Article 3. <http://dx.doi.org/10.5751/ACE-00632-090103> (Peer-reviewed)

Long, A., J. Weiss, M. Princevac, and C. Bartolome. 2014. Superfog: State of the science. Southern Fire Exchange Fact Sheet 2014-2. 3 pages. (Extension)

Long, A. and B. Moule. 2014. Vegetation treatment options and management objectives: A case study in longleaf pine. Southern Fire Exchange Fact Sheet 2014-4. 2 pages. (Extension)

Long, A., D. Godwin, and L. Kobziar. 2014. Mechanical treatments and herbicides as fire surrogates: State of the science in Florida ecosystems. Southern Fire Exchange Fact Sheet 2014-5. 2 pages. (Extension)

Robertson, K.M. 2014. Book review of: *Forgotten Grasslands of the South—Natural History and Conservation*. *Ecological Restoration* 32:213.



Robertson, K. M. and T. L. Hmielowski. 2014. Effects of fire frequency and season on resprouting of woody plants in southeastern US pine-grassland communities. *Oecologia* 174:765-776.

Robertson, K.M., Y.P. Hsieh, and G.C. Bugna. 2014. Fire environment effects on particulate matter emission factors in southeastern U.S. pine-grasslands. *Atmospheric Environment* 99:104-111. (Peer-reviewed)

Rush, S.A., K. Sash, J. Carroll, W.E. Palmer, and A.T. Fisk. 2014. Feeding ecology of the snake community of the Red Hills Region relative to management for Northern Bobwhite: assessing the diet of snakes using stable isotopes. *Copeia* 2014 (2):288-296 (Peer-reviewed)

Terhune, T.M., W.E. Palmer, and D.C. Sisson. 2014. *Quail Call: Spring/Summer* 16 pages. (Extension)

Terhune, T.M. 2014. The Song of the Longleaf Pine. *Longleaf Leader* 7:8-12 (Popular)

Books:

Nelson, Gil, Christopher J. Earle, Richard Spellenberg, Edited by Amy Hughes, Illustrations by Davie More. *Trees of Eastern North America* (Princeton Field Guides). 2014. Princeton University Press.

Spellenberg, Richard, Christopher J. Earle, Gil Nelson. *Trees of Western North America* (Princeton Field Guides), Edited by Amy Hughes, Illustrations by Davie More. 2014. Princeton University Press.

2014 RESEARCH HIGHLIGHTS

Fire Ecology

Dr. Kevin M. Robertson, Fire Ecology Program Director

The highlight of 2014 was our co-hosted conference titled Fire Ecology of the Northeast - Restoring Native and Cultural Ecosystems with Yale School of Forestry and Environmental Studies at Yale University. Publication of papers in peer-reviewed journals elevated participation and quality of the Fire Ecology Conference series which helped shape the study of fire ecology.

- Served as editor-in-chief for a special issue of the Journal of Sustainable Forestry containing papers presented at the fire ecology conference.
- Published and submitted papers on improving estimates of particulate matter (smoke) emissions from prescribed burns to complete a National Science Foundation grant in collaboration with Florida A&M University.
- Began to study the fire history of the Red Hills region during the past few centuries as recorded by fire scars in stumps of old-growth trees: a collaboration with dendrochronologist Jean Huffman.
- Completed the biennial Woodyard Hammock census of an old-growth beech-magnolia forest on Tall Timbers, which was started 34 years ago.



Tall Timbers Fire Ecologist Angie Reid moderating a session at the conference, Fire Ecology of the Northeast — Restoring Native and Cultural Ecosystems Tall Timbers Co-hosted with Yale School of forestry and Environmental Studies at Yale University.



At right, dendrochronologist Jean Huffman examining the stump of an old tree at the Big Woods, Greenwood Plantation, Thomas County, Georgia. Jean is collecting sections from old stumps, some over 300 years old, for the collaborative study of fire history in the Red Hills. Photo by Neil Jones

Game Bird Program

Dr. Theron M. Terhune, Game Bird Program Director

A hallmark of our nationally-recognized Game Bird Program is long-term research. With the acquisition of Dixie Plantation, year-round and long-term monitoring of bobwhites on replicated sites, Dixie and Tall Timbers, has become a reality strengthening our research opportunities.

- Launched the first Tall Timbers' mobile application during 2014-15 hunting season — **Birds Up** — which provides a tool to enter covey encounters and typical hunting information during a quail hunt. This app will provide spatial data on covey encounters for research as well;
- Translocated wild quail to four properties in Georgia and the Carolinas helping to create new wild quail lands and began a bobwhite restocking project in the Mid-Atlantic States;
- New research on the effects of edge and cover on bobwhite survival and hunting success and factors influencing detection of coveys;
- In collaboration with Florida Fish and Wildlife Conservation Commission we began a project on gobbling and nesting activity of eastern wild turkeys.



Translocating wild quail.

Stoddard Lab of Ornithology

Jim Cox, Program Director

The Stoddard Bird Lab put a lot of time on the road last year providing new information to land managers, conservation organizations, and the broader scientific community. Our outreach included 12 presentations to national scientific organizations and professional natural resource specialists, appearances in National Geographic and Smithsonian magazines, presentations to 21 local business and civic groups, and 31 field tours for the general public and Red Hills landowners.



Thanks to a grant from the U.S. Fish and Wildlife Service, the Stoddard Bird Lab is working with Grasshopper Sparrows near Bainbridge, GA, to develop methods for improving nesting success in this declining species. Photo by Jim Cox

- Received grants to monitor Red-cockaded Woodpecker populations on state-owned lands and to provide new artificial woodpecker cavities on properties in the Red Hills;
- Continued ground-breaking research exploring the intriguing breeding biology of the Brown-headed Nuthatch;
- Organized a special field workshop to develop new fire-management procedures for the critically endangered Florida Grasshopper Sparrow.

Land Management

Eric Staller, Resource Coordinator

- Prescribed, initiated, and completed 1,024 acres of prescribed burns on Tall Timbers and monitored the results with 179 post-burn evaluation plots;
- Post-burn mowed 336 acres of unburned vegetation to top-kill vegetation above 6 feet, and/or to thin natural pine regeneration;
- Secured grant with the National Resources Conservation Service (NRCS-EQUIP);
- Treated 23 acres of cogon grass on a Red Hills plantation;
- Completed the Tall Timbers Land Management Plan for 2015-2020.

National Interagency Prescribed Fire Training Center

Greg Seamon, Fire Training Specialist

Tall Timbers continued its relationship with the Prescribed Fire Training Center (PFTC), in Tallahassee, FL, through its agreement with the U.S. Forest Service. Tall Timbers employee Greg Seamon, Fire Training Specialist at PFTC, provided coordination for all sessions and a workshop held by the Center. In addition Tall Timbers hosted two of the sessions on field trips during the year.



- Held five 20-day sessions and one workshop with 140 participants representing five federal agencies, eight state or local agencies, one private company and three international sites. Participants came from Washington to Florida, New Jersey to California, as well as Australia, Canada, and Spain;
- PFTC teams conducted 157 burns totaling 56,168 acres, with 35 different cooperators, of which 11,920 acres were in the wildland urban interface. Operations took place in Arkansas, Georgia, Florida, South Carolina, and Texas;
- There were 34 line officers from three federal agencies (BLM, USFS, and USFWS) that participated in the Agency Administrators Workshop held in central FL;
- PFTC produced two marketing videos for the Center during the year: the first focused on the 20-day sessions and the second promoting the Agency Administrators Workshop.



Lynsie Slachetka from Voxy Media interviews Virginia Retting during burn.



Burning on the Ouachita National Forest.



PARTNERSHIPS

Upland Ecosystem Restoration Project (UERP)

Greg Hagan, FWC, Project Coordinator

Sarah Brown, TTRS, Public Lands Research and Monitory Biologist

The Upland Ecosystem Restoration Project is in its ninth year at Tall Timbers and was developed to implement on-the-ground management to maximize conservation benefit of upland ecosystems on public lands in Florida. This project continues to engage Florida's four primary land management agencies (Department of Environmental Protection, Florida Forest Service, Fish & Wildlife Conservation Commission, and National Forests in Florida), to address conservation threats (incompatible fire regime) on public lands and change management philosophy towards

restoration of priority habitats, that benefit declining fire-dependent wildlife species.

2014 highlights included:

- Officially added 4,624 acres to the UERP focal area on Blackwater River State Forest (total focal area is now approximately 16,000 acres);
- Received \$20,000 from the USFWS-Coastal Program for increased land management within the UERP focal area on St. Sebastian River Preserve State Park;
- Developed small scale burn blocks on several UERP focal areas;

— UERP continued on page 8

PARTNERSHIPS

Southern Fire Exchange

Alan Long, Ph.D. Administrative Director

David R. Godwin, PhD, Program and Outreach Coordinator



Throughout 2014 the Southern Fire Exchange (SFE) continued to grow and demonstrate value as a regional leader in wildland fire science communication and outreach. As a science outreach program funded by the federal Joint Fire Science Program and administered by the University of Florida, North Carolina State University, Tall Timbers Research Station & Land Conservancy, and the US Forest Service Southern Research Station, SFE is tasked with connecting Southern land managers with relevant fire science and helping regional researchers to understand the problems and needs of natural resource managers and decision makers.

In 2014, SFE introduced significant visual and navigational improvements to the main website (<http://www.southernfireexchange.org>) which continues to be updated weekly and serve as the central hub for SFE resources and programming. In 2014, SFE co-sponsored the Tall Timbers E.V. Komarek Fire Ecology Database (FEDB) which serves as a bibliographic resource for discovering fire science literature. With over 1,400 new titles added during the year, the FEDB continues to be a treasured fire science resource. The SFE webinar program flourished in 2014, with a record fourteen fire science webinars that covered topics from smoke modeling and management to prescribed fire

UERP continued from page 7 –

- UERP avian and vegetation monitoring was completed on five sites: St. Sebastian River Preserve State Park, Withlacoochee and Jennings State Forest, Osceola and Apalachicola National Forest;
- Completed over 200 quail covey call counts on UERP focal areas;
- Developed a new burn regime to reduce fire extent on the Citrus UERP focal area.



St. Sebastian River Preserve State Park, an UERP focal site. Photo by Greg Hagan.



“Land managers, landowners, and resource specialists learn about lessons in habitat management from the Upland Ecosystem Restoration Project during a Southern Fire Exchange field tour in the Apalachicola National Forest.”

planning. The SFE webinars reached nearly 1,000 live participants from across the country and received extremely positive feedback from attendees. To connect natural resource managers with scientists, the SFE field tour and workshop program hosted or contributed to eight different events in five states that provided over 300 participants field experiences to collaboratively learn about fire management and use. SFE presentations at conferences, prescribed fire councils, and other meetings through 2014 connected with an additional 1,600 natural resource managers in the region and offered opportunities to solicit feedback from practitioners. Looking ahead to 2015, SFE will continue existing programs that have proven successful for communicating fire science, while developing a new series of strategic “Fire Circle” meetings that will use existing science to solve local management issues.

BEADEL FELLOWS

Tall Timbers’ Beadel Fellow Program continued its long-standing support of highly-productive senior naturalists and/or scientists on projects that further the mission at Tall Timbers. We are pleased to be able to make use of this wealth of knowledge and expertise from our Beadel Fellows.

Drs. Jeff Glitzenstein and Donna Streng

Drs. Glitzenstein and Streng completed another year’s monitoring as Beadel Fellows on a project to restore a pine/cypress savanna in Wakulla/Jefferson County, Florida. The project is contracted through Tall Timbers with Westervelt Company.

They also continued work on analysis of data for Tall Timbers’ long-term Stoddard Fire Plots that pertain especially to tree dynamics in the plots. A manuscript is being produced from that project.

Dr. Glitzenstein attended an invited workshop at the Longleaf Alliance meetings in Mobile, Alabama to discuss research and strategy for longleaf groundcover restoration.

Dr. Gil Nelson

Tall Timbers’ imaging station and modified protocol were used to image about 4300 specimens at Archbold Biological Station, moving resulting images and data to the Symbiota portal at the North American Network of Small Herbaria. These images and data will be placed in the iDigBio portal database providing online and searchable ARCH data for the first time.

Along with Florida State University and University of Florida, Dr. Nelson worked to ensure Tall Timbers’ dataset was also available through iDigBio. He participated in a botany workshop in Kongsvold, Norway where a presenter from Sweden used a bird specimen image from the Tall Timbers’ collection and digitization project to illustrate his talk; and Nelson gave four conference presentations that included content and/or data from Tall Timbers (Michigan, Cardiff, Wales, University of Florida, and Vancouver, British Columbia).

Dr. Nelson co-authored two books published by Princeton University Press that were released in July 2014: *Trees of Eastern North America* and *Trees of Western North America*. He was lead author on the first of these books. Specimens from the Tall Timbers’ herbarium were a valuable resource for this work.

Dr. William J. Platt

Dr. Platt continued work as a Beadel Fellow on thirty-five years of data collected on the tree populations on the Wade Tract (1978-2013). With approximately 20,000 trees tagged

and censused for their state (alive/dead), diameter at breast height, and condition of the tree; data entry and additions to the master file have been underway and completed in late 2014. Long-term analysis of data from the mapped plot continued in 2014. The master data file will be updated to include the 2013 census data in 2015.

The history of fires on the Wade Tract (1978-2014), with their location and characteristics, was updated. New information from photographs was added, along with fire data for 2013 and 2014. Prescribed fires were placed into a file format useful for compiling the history of fire and measurements of characteristics and behavior of prescribed fires and will be associated with the mapped plot. Plans are to work with fire maps that have been constructed annually over the past decade to identify areas that tend not to burn regularly. The vegetation will then be explored in areas that tend to burn every year and areas that tend not to burn every year.

A field experiment was initiated in 2014 on the effects of fungi on litter deposited post-fire on the Wade Tract. Sixty 1x1 meter plots were established to study fungal communities in areas burned in 2014 and in imbedded unburned patches. Samples were collected from fungal communities in the litter (upper 0.75 inches of the soil), and then analyzed using molecular techniques to identify fungal community composition in the litter and soil layers. Additionally, litter decomposition over the year was measured using a field experiment conducted at these 60 sites. After collection, bags were dried, weighed to measure loss of litter to decomposers, and sampled for fungi. Data from this preliminary study indicated sizable (30-40%) differences in decomposition between burned and unburned areas.



Plot and litter bag from Wade Tract experiment on the effects of fungi on litter post-fire. Photos by Bill Platt.



Gem Land Company donated a 47-acre conservation easement protecting the waterway linking Lake Iamonia and Foshalee Slough. Photo Shane Wellendorf

LAND CONSERVATION

In 2014, Tall Timbers closed on three important conservation easements for Pine Fair Plantation, Big Bend Wildlands Preserve and Cherokee Plantation. To date, Tall Timbers has conserved over 140,000 acres via donated conservation easements and properties owned by the organization.

Pine Fair Plantation — Thomas County, Georgia

Over the years, the Mitchell Family has been donating phased easements and in 2014 completed protecting the nearly 2,000-acre property with their final phase donation. Pine Fair is a remarkable property. Its upland pines are sustainably managed and include mature longleaf and intact native groundcover supporting the presence of key-stone wildlife species. The forested wetlands and numerous sinks on the property are directly linked to the Aucilla River watershed and the Floridan Aquifer, our primary source for regional drinking water.

Big Bend Wildlands Preserve — Taylor and Madison Counties, Florida

Both large and small properties are important as they play a key role in saving the natural resources of the Red Hills Region. The 148-acre preserve is a unique parcel of forested uplands and wetlands in the Suwannee River Basin. The Special Natural Areas on the property offer high quality, relatively undisturbed aquatic wetlands and transition habi-

tat for a number of species that are rare and state or federally protected.

We thank Donna McCollum and Hays Cummins for this wonderful conservation easement that helps us close the gap between protected and unprotected land in the Middle Aucilla Conservation Area.

Cherokee Plantation — Leon County, Florida

The property borders the 6,000 acre Lake Iamonia and Foshalee Slough. This 47-acre easement protects the waterway connecting these two important waterbodies that drain into the Ochlockonee River. While small, this easement is of high conservation value maintaining the ecological integrity and hydrology of the area. Previously the landowner, Gem Land Company, had donated scenic easements along US 319.

Tall Timbers Receives Accreditation Renewal

Tall Timbers was awarded accreditation renewal by the Land Trust Accreditation Commission in August 2014. “Tall Timbers is one of the first land trusts to achieve renewed accreditation, a significant achievement for the land trust and significant major milestone for the accreditation program. They are an important member of the 301 accredited land trusts that protect more than half of the 20,645,165 acres currently owned in fee or protected by a conservation easement held by a land trust,” said Commission Executive Director Tammara Van Ryn. “Accreditation renewal, which must be completed every five years, provides the public with an assurance that accredited land trusts continue to meet exceedingly high standards for quality.”

PLANNING AND ADVOCACY

2014 was an extremely busy one for the Tall Timbers’ planning and advocacy program. Working closely with Clay Sisson, director of the Albany Quail Project, planning coordinator Neil Fleckenstein completed a comprehensive economic impact analysis of the quail hunting lands of the Greater Albany Region. Tall Timbers feels it is critical for elected and appointed leaders and the public to understand the vital role hunting lands play in our local and regional economy and in protecting the natural resources we all rely on.

The results of the analysis are based on our survey of more than 70 Greater Albany Region hunting properties ranging in size from 500 to over 28,000 acres. We received responses from the owners of more than 203,000 acres of the hunting lands in our survey area.

Our project partner, the Center for Economic Forecasting and Analysis at Florida State University, found that in 2013, the economic impact of Greater Albany Region hunting properties was nearly **\$125 million** (reported in 2014 dollars). Nearly **900 local jobs** are directly or indirectly related to Albany Region hunting properties. These jobs generate more than **\$38 million** in employment income and pay wages higher than average for this area.



Lane Morrell, Sales Manager at Plantation Seed, one of many businesses dependent on quail hunting in the Albany Region.

When combined with the results from Tall Timbers’ 2013 *Red Hills Economic Impact Analysis*, the importance of quail hunting to local and regional economies is undeniable: a combined **\$272 million** in economic impact, nearly **2,300 jobs**, and **\$89 million** in labor income. Not to be forgotten, these hunting lands also provide clean and abundant drinking water, fresh air, and habitat for many imperiled species. The results of the Albany study are found in our publication entitled *The Economic Impact of the Quail Hunting Lands of Georgia’s Greater Albany Region*, available at talltimbers.org.

In addition to the Albany economic analysis, Tall Timbers’ planning staff were also involved in a number of land use issues in the Red Hills. These included issues relating to protecting Leon County’s rural lands from incompatible commercial development; analyzing Jefferson County land development regulations; advocating for improved zoning regulations to protect water quality in the Warrior Creek watershed; and providing technical assistance to Albany Region hunting land owners who are dealing with the proposed Sable Trail Pipeline.

GREATER RED HILLS AWARENESS INITIATIVE

Tall Timbers and the partners of the Greater Red Hills Awareness Initiative launched their collaborative effort in April 2014 through a series of stakeholder planning meetings in Tallahassee and Thomasville. Project partners seek to broaden the public’s recognition of the many natural, historical and cultural wonders of the unique Red Hills landscape of Southwest Georgia and North Florida. Look for the Initiative’s website at www.redhillsregion.org. Outreach and education highlights for 2014 include:

- Red Hills ecology awareness trips with local elected officials and key community leaders;
- Approximately 20 ecology and history field trips and community speaking engagements at Tall Timbers and other locations in the Red Hills;
- Exhibitor booths at major public events including the Red Hills Horse Trials, FSU Mag Lab Open House, and Covey Film Festival;
- Twice monthly “Exploring the Red Hills” guest column in the Tallahassee Democrat;
- Red Hills history minutes airing weekly on two local FM radio stations; and
- Production of several educational films featuring the Red Hills Region airing on WFSU-TV’s Dimensions.

Information Resources

Tall Timbers’ product is information. Supervised by Communications Director, Rose Rodriguez, the staff of Information Resources, coordinate the full-range of activities necessary to meet both the internal and external information needs of Tall Timbers. These activities include Communications (public relations, print and digital publications and website management); the Parker-Williams Library, managed by librarian Carol Armstrong Kimball, maintains the E. V. Komarek Fire Ecology Database; and the Archives, Records Management and Historic Resources are maintained by archivist Juanita Whiddon.



Lake Iamonia by Yoshiko Murdick was a featured watercolor in the Fall 2014 TAWS exhibit at the Webster Art Gallery.

Archives & Historical Resources

Tall Timbers opened the Webster Art Gallery in the historic Beadel House in September 2014. The second floor gallery exhibits watercolors from the Tallahassee Area Watercolor Society (TAWS) three times each year. Henry Beadel, who bequeathed his property to establish Tall Timbers Research Station, was not only a conservationist but he was also a watercolorist, so this venue is a good match for the use of this space in his former home.

The gallery has been named in honor of Mr. and Mrs. Robert C. Webster Jr. for their many decades of service and contributions to Tall Timbers; they are recognized by a plaque that has been placed at the entrance to the second floor gallery.

Monthly and special historic tours of the Beadel House and Jones Family Tenant farm are given by archivist Juanita Whiddon and her docents. A **tour schedule** is available on Tall Timbers’ website.

Communications

Converting Tall Timbers’ website to a content management system (CMS) was a major Communications project undertaken in 2014. A CMS allows staff to update their program’s web pages using a custom designed template. Updates continue in 2015. When these are complete, an additional site will be created that is optimized for mobile devices, such as smartphones and tablets. We are grateful to Mr. and Mrs. John E. Phipps for their support of this project.

Parker-Williams Library

In 2014, the Library collaborated with the Archives on a mapping project to inventory, digitize and catalog the entire Tall Timbers map collection, including aerial photos, created by staff for research and conservation purposes since 1958, our founding year. Some of the maps are fragile and historic and needed to be digitized to preserve them in an easily accessible electronic format.

For the project, Tall Timbers collaborated with the Panhandle Library Access Network (PLAN), who provided the funds to scan the oversized maps and photos. The Capital City Bank Group Foundation provided the funds for the cataloging. Thanks to this support, Tall Timbers provides online access through our online library catalog to our collection of maps and aerial photographs for landowners, land managers, researchers, students and the public in the communities we serve. They range from aerial photographs of the Red Hills region, to historic maps of Leon and Thomas Counties. There are hand-drawn timber maps of various plantations from the 1940s and ‘50s, and many other maps of regional interest. The scanned maps are linked to the library record. Visit the library page on our website to find the catalog link: talltimbers.org/info-library.html.

In addition the collection has been incorporated into the Florida Memory website, an online service of the Florida Department of State, Division of Library and Information Services, www.floridamemory.com/.



One of the historic maps in the Tall Timbers map collection that was digitized and catalogued for online access by staff and the public.

Dixie Plantation

PRESIDENT’S REPORT

By Bill Palmer, PhD, President & CEO

I am proud to write the inaugural President’s Report for Dixie Plantation Research LLC (DPR), a wholly-owned subsidiary of Tall Timbers Research, Inc., and owner of Dixie Plantation. The 9,100-acre Dixie Plantation property and assets owned by the Geraldine C. M. Livingston Foundation (GCML) were gifted to DPR when the foundation ceased operations in December 2013. As a separate company, DPR operates financially-independent from Tall Timbers Research, Inc. This \$40-plus million dollar asset will forever change Tall Timbers by increasing our capacity to conduct ecological research and demonstrate our land stewardship model. We are indebted to the Livingston Family and the Trustees of the GCML Foundation for the largest gift in Tall Timbers history!



Gerald M. Livingston, Geraldine’s father, with two of his champion dogs. Livingston purchased the antebellum “Cedars” plantation for a reported \$8 dollars an acre in 1926, renaming the property Dixie Plantation. By the mid-1930s, with the purchase of adjoining farms, he had assembled over 18,000 acres. Geraldine inherited the Florida side (9,100 acres) with the John Russell Pope mansion. Photo from the Dixie Archives.

As new owners of a property, there is much to be decided and implemented. Luckily, Dixie has a rich history in the Red Hills to build upon, including a legacy of caring for the land, a historic mansion designed by John Russell Pope, and a dedication to host one of the oldest and most prestigious pointing dog field trials in the country, “The Continental”. We began building on Dixie’s legacy by demonstrating exemplary land stewardship and increasing our research capacity, while operating a working wild quail property with a broad conservation vision. Our staff



Historic Dixie mansion designed by John Russell Pope. Photo by Kevin McGorty

had a very busy year improving land management and infrastructures to better support research, events, field trials, and visitors. In 2014 we:

- Applied for a special category grant with the Division of Historical Resources in Florida to help to renovate the historic main house;
- Established long-term monitoring of key wildlife species and established photo points;
- Began two new collaborative research initiatives on effects of hardwood removal on northern bobwhite and other fire-adapted species;
- Increased management for northern bobwhite to support leased hunting and field trials;
- Improved the pine savannas on Dixie by reducing live oak encroachment on 600 acres and established a 5-year plan to renovate the remainder of the property;
- Revised and officially established the Continental Field Trial Club and hosted the 119th Continental Field Trial with the largest entry in the history of the trial;
- Hosted over 300 people at the Tall Timbers Fall Field Day held at Dixie;
- Invested \$180,000 on infrastructure and improvements.



F&W Foresters train Dixie staff in timber cruising as part of an inventory of the entire property.

Development

ANNUAL GIVING

Your gift makes a difference

Your annual gift to Tall Timbers produces tangible results. As a steward of our wildlife and wildlands, your support helps conserve critical wildlife habitat, precious natural resources, and historic rural landscapes for future generations to share and enjoy.

Aside from annual membership giving, there are many ways you can make a tax-deductible gift to Tall Timbers.

- **Program Specific Gifts:** You can designate a research or conservation program as the beneficiary of your gift.
- **Appreciated Securities:** Stocks, bonds and other appreciated securities can be transferred from your brokerage account directly into Tall Timbers' account.
- **In-Kind Gifts:** Tall Timbers is always in need of equipment, furniture, vehicles or supplies that can help supplement our growing needs and demands.
- **Planned Giving:** You can help leave a legacy of support by naming Tall Timbers as a beneficiary in your will, charitable trust, life insurance policy or retirement plan. A planned gift is an excellent way to protect the value of your estate as you provide for the future of Tall Timbers.
- **Memorial Gifts:** Make a special gift in memory of a loved one or special friend.
- **Become a Corporate Sponsor:** Tall Timbers is always looking for corporate partners to help sponsor fundraising events, publications, educational seminars and special projects.

For more information about any of the above giving opportunities or how you can support the research and conservation efforts of Tall Timbers, please visit our website, talltimbers.org/support-tall-timbers/, or contact our Development Director, Dale Fuller, at: 850.893.4153, x343.

Join Us in Giving

God creates new people constantly, but he doesn't make more land. Because this unique area is home to more than 40 threatened and endangered species, the greatest contribution we can make with our lives is to ensure their chance to survive forever.

The fabulous added benefit of preserving these habitats for diverse species is that they are the same landscapes that provide sustainable economic returns, hunting, fishing and many other recreational values for landowners.

Marty and I have contributed to Tall Timbers for many decades because we are keenly aware that their applied science, conservation successes and defense of such things as the right to conduct controlled burns are paramount to maintaining this viable, sustainable, magnificent environment of the Greater Red Hills area and beyond for generations to come.

Won't you join us in supporting Tall Timbers now and in your will?



Marty and Daphne Wood
Live Oak and Merrily Plantations

TALL TIMBERS SOCIETY

Tall Timbers Society members are friends who make a significant and sustaining impact on our ability to accomplish our mission through their generous cumulative annual giving, both monetary and in-kind.

Stoddard Level - \$100,000 and above

Mr. and Mrs. Richard A. Corbett
Mr. Mason Hawkins
The Josephine Ford Family
The William Stamps Farish Fund
Mr. and Mrs. C. Martin Wood III

Bobwhite Level - \$50,000 - \$99,999

Mr. Paul Tudor Jones II
The Moore Charitable Foundation, Inc.
Parker Poe Charitable Trust
The Perkins Charitable Foundation
Mr. and Mrs. Witt R. Stephens, Jr.
Williams Family Foundation of Georgia, Inc.
William Howard Flowers Foundation, Inc.

Fire Level - \$25,000 - \$49,999

Mrs. Kathy R. Archibald
Mr. and Mrs. James H. Dahl
Mr. and Mrs. William F. D'Alonzo
Mr. Lane Faison
Firman Fund
Mr. and Mrs. Lawrence Flinn, Jr.
Mr. Raymond J. Harbert
The Kate Ireland Foundation
Mr. and Mrs. Tom L. Rankin
Dr. Henry Sears
The Seymour H. Knox Foundation, Inc.
Mr. Remy Trafelet
Turner Foundation, Inc.
Mr. and Mrs. George C. Watkins

Longleaf Level - \$10,000 - \$24,999

AgPro LLC
Anonymous
Mr. Theo B. Bean, Jr.
Miss Wendy H. Bicknell
Mr. Gregory Callimanopulos
Mr. and Mrs. Joseph H. Davenport IV
Mr. and Mrs. Robert E. Delapp
Mr. Frank Foley III
Foundation for the Carolinas, Tom and Kathy Ewing Fund

Georgia Power Foundation
Mr. and Mrs. Frederic C. Hamilton, Sr.
JCK Foundation, Inc.
The Johnston Family Foundation
Mr. Anthony Jonklaas
Mr. and Mrs. Samuel B. Kellett, Sr.
Kolomoki Plantation
Mac's Wingshooting Adventures
Merrily Plantation, Inc.
Mr. and Mrs. Emmett Mitchell III
John and Susan Mullin Fund of The Community Foundation Serving Richmond and Central Virginia
New Jersey Audubon Society
Mr. and Mrs. Colin S. Phipps
Mr. and Mrs. John E. Phipps
Pinebloom Plantation
Pineknoll Pecan Properties, LLC
R.K. Mellon Family Foundation
The Samuel E. Upchurch, Jr. Charitable Foundation
Senah Plantation, LLC
The Thomas M. Kirbo and Irene B. Kirbo Charitable Trust
Dr. and Mrs. Philip C. Watt
Mrs. Robert C. Webster, Jr.
Mr. Tom C. Weller, Jr.



The Ag-Pro Companies donates the use of a tractor each year to Tall Timbers for its land management. Photo by Rose Rodriguez

Thank you again for your generous support.

2014 ANNUAL FUND CONTRIBUTORS

Members of Tall Timbers

Fire Member - \$25,000 - \$49,999

Mr. Paul Tudor Jones II
The William Stamps Farish Fund

Longleaf Member - \$10,000 - \$24,999

Miss Wendy H. Bicknell
Mr. Gregory Callimanopulos
Mr. and Mrs. Richard A. Corbett
Mr. Raymond J. Harbert
Mr. Mason Hawkins
Mr. Anthony Jonklaas
Parker Poe Charitable Trust
The Perkins Charitable Foundation
Mr. and Mrs. Tom L. Rankin
The Samuel E. Upchurch, Jr. Charitable Foundation
Mr. and Mrs. George C. Watkins
Mrs. Robert C. Webster, Jr.

Benefactor Member - \$5,000 - \$9,999

Mr. Theo B. Bean, Jr.
Mr. Harry Burn III
Mr. and Mrs. Russell P. Chubb
Mr. and Mrs. Lawrence Flinn, Jr.
Mr. Terence M. Graunke
Mrs. D. Williams Parker
Mr. David D. Perkins

Patron Member - \$2,500 - \$4,999

Mrs. Kathy R. Archibald
Mr. and Mrs. C. DuBose Ausley
Mr. Edward L. Baker
Mr. John D. Baker II
Mr. and Mrs. Charles M. Chapin III
Mr. Samuel S. Gottwald
Mr. Redmond S. Ingalls
The Kate Ireland Foundation
Mr. and Mrs. Samuel B. Kellett, Sr.
Mr. J. Wesley Langdale III
Mr. Gordon Mooney
Mr. Joe W. Rogers, Jr.
Mr. and Mrs. Michael D. Shea
Mr. and Mrs. Thomas V. H. Vail
Mrs. Mrs. Jephtha V. Wade
Mr. Tom C. Weller, Jr.

Sponsor Member - \$1,000 - \$2,499

Mr. F. L. Burke



Left to right, Tom Barron, Lane Green and Daphne Wood at the 2014 Kate Ireland Memorial Auction & Dinner.
Photo by Rose Rodriguez

Mr. J. Palmer Clarkson
Mrs. Wendy Curtis
Mr. and Mrs. William F. D'Alonzo
Mr. and Mrs. Joseph H. Davenport III
Mr. and Mrs. Edward A. Davis, Jr.
Mr. and Mrs. Guy De La Valdene
Mr. Thomas R. Devlin
Mr. Howell L. Ferguson and Dr. Sharon Maxwell
Mr. James L. Ferman, Jr.
Mr. James G. Fitzgerald
Mr. Sam Gary II
Mr. Elbridge T. Gerry, Jr.
Mr. Samuel S. Gottwald
Mr. and Mrs. Kenneth R. Hart
Mr. and Mrs. G. Watts Humphrey, Jr.
Mr. William J. Hurst
Mr. and Mrs. Melville H. Ireland, Jr.
Mr. Robert L. Ireland Jr.
Ms. Connie S. Kummer
Mr. and Mrs. John B. Long II
Mr. and Mrs. James N. McConnaughay
Mr. W. A. McGriff III
Dr. and Mrs. Douglas C. McPherson
Mr. and Mrs. John H. Mullin
Mr. Robert Nunnally
Orton Camp, LLC
Mr. Everall D. Perkins
Mr. and Mrs. Clifford M. Preston
Mr. Theo Rumble Jr.
Dr. and Mrs. Charles R. Sanders
Mr. and Mrs. Ellery W. Sedgwick
Mr. and Mrs. Ellery Sedgwick
Mr. Wallace E. Sholar, Jr.
Dr. and Mrs. George W. Simmons
Mr. and Mrs. Taylor W. Smith
Mr. and Mrs. William G. Smith, Jr.

Mr. J. Vereen Smith
Mr. and Mrs. Witt R. Stephens, Jr.
Mrs. Sallie P. Sullivan
Thomas H. Lanier Foundation
Dr. and Mrs. Walter R. Tschinkel
Mr. and Mrs. C. Martin Wood III

Sustaining Member - \$500 - \$999

Dr. and Mrs. J. Galt Allee
Mr. John G. Alston
Mr. and Mrs. Mark Anderson
Mr. and Mrs. R. C. Balfour III
Mr. Lamar Q. Ball III
Mr. C. Victor Beadles
Mr. and Mrs. Warren Bicknell III
Mr. and Mrs. John M. Carlton, Jr.
Mr. and Mrs. Alvin R. Carpenter
Mr. R.R.M. Carpenter III
Ms. Rebecca C. Chubb
Cooper Farms
Mr. Henry L. Crisp
Mr. and Mrs. Joseph H. Davenport IV
Mr. and Mrs. C. David Fonvielle
Dr. and Mrs. Jerry Ford
Mr. Sherrill W. Hudson
Mr. and Mrs. Rip Kirby
Mr. and Mrs. W. Gates Kirkham
Mr. and Mrs. Bryan F. Knox
Mr. and Mrs. A. Lawton Langford
Mr. and Mrs. G. Robertson Langford
Mr. and Mrs. Bernard Lanigan
Mr. and Mrs. J. Philip Leabo, Sr.
Dr. and Mrs. John R. Lewis, Ph.D.
Mr. Robert C. Loudermilk, Sr.
The Love Family Foundation

Mr. and Mrs. Kenneth G. McDermott
Mr. Mitch McElroy
Mr. Walter E. Melton, Jr.
Mr. John W. Mettler
Mr. and Mrs. C. Mark Pirrung
Mr. Hugh S. Plumb
Mr. J. Mathieu Plumb
The Proctor Dealership
Dr. and Mrs. John B. Reynolds
Mr. Bradley Ribelin
Mr. Sonny Roberts
Mr. Eli R. Sharp
Mr. and Mrs. Bernie Staller
Mr. and Mrs. Timothy P. Sullivan
Mr. and Mrs. Charles M. Tarver
Mr. Lee Walters
Dr. and Mrs. Philip C. Watt

Dr. and Mrs. T. K. Wetherell
Mr. and Mrs. Blair Williams
Mr. Mark Worthey

Supporting Member - \$250 - \$499
Mr. Jeff Alexander
Dr. Carol Allman and Mr. Kenneth L. Allman
Mr. William H. Anderson II
Mr. and Mrs. Mark Anderson
Mr. Bernard C. Baldwin III
Mr. and Mrs. R. C. Balfour III
Mr. Ben F. Betts, Jr.
Mr. and Mrs. Sid C. Bigham, Jr.
Mr. Michael E. Blakeley
Mr. Edward S. Bonnie
Mr. and Mrs. Allan M. Bostick Jr.
Mr. and Mrs. Hal Brannen

Dr. Roland Bridges
Mr. and Mrs. John S. Briedis
Dr. and Mrs. Clifford S. Bristol
Mr. and Mrs. Henry Bush
Mr. and Mrs. John M. Carlton, Jr.
Mr. Charlton H. Chatfield
Mr. Cader B. Cox III
Mr. Charles R. Crisp
Mr. Dale C. Critz
Mr. Douglas M. Croley
Mr. Elliott Davenport, Jr.
Dr. John B. Davis, Jr.
Mrs. Endicott P. Davison
Mr. Robert H. Demere Jr.
Mr. Gary Dietrich
Mr. Robert S. Doochin
Duck Haven Gun Club
Mr. William A. Dupre III
Ms. Renee Duval
Mr. and Mrs. J. Colin English, Jr.
Mr. Dan Fletcher
Mr. Todd Ford
Mr. Franklin W. Foster
Ms. Dale Fuller
Miss Patricia Gainey
Grady Electric Membership Corp.
Mr. Benson T. Green
Mr. and Mrs. Ralph G. Greene
Mr. and Mrs. Greg Hamil
Mr. Fred Hancock
Mr. Harper Hanway
Dr. Bob Harbin
Mr. and Mrs. Michael S. Hartman
Mr. and Mrs. Joe Harvard
Mr. J. Madden Hatcher, Jr.
Dr. Jack B. Hobson
Mr. and Mrs. Sloan Howard
Mr. John K. Humphress
Mr. Duncan Hunt
Mr. William L. Ireland
J. Crisp Enterprises, LLC
Mr. and Mrs. Powell Jones
Mr. Tom Jones
Dr. Kristin E. Kentopp
Mr. John E. Ladson III
Mr. Michael J. Lee
Mr. and Mrs. G. Mayo Livingston
Mr. Edward C. F. Loughlin
Mr. Peter Manigault
Mr. and Mrs. Ben W. McCollum
Dr. Robert McDavid
Mr. Kevin McGorty
Mr. Jamie Michaels
Mr. Payne H. Midyette, Jr.
Ms. Julie Miller
Mr. and Mrs. Doug Miller
Mr. and Mrs. W. S. Montgomery, Jr.



Fire Ecology Program interns Patrick Kimball and Jamie Peeler conduct the Biennial Woodyard Hammock Census.
Photo by Angie Reid

Mr. and Mrs. Ed Moody
Mr. and Mrs. Richard G. Mooney
Mr. and Mrs. Charles Newlin, Jr.
Ms. Lucretia Norman
Mr. and Mrs. Carl Pennington
Mr. Sammy Prim
Red Hills Land Company
Mr. Franklin Reinstine, Jr.
Mr. Francis Rentz
Riverview Plantation
Mr. James M. Robinson IV
Mr. and Mrs. David C. Scott
Dr. Terry Smith
Mr. and Mrs. William P. Smith, Jr.
Mr. Drane Smith
Dr. and Mrs. J. Orson Smith
Mr. Stephen A. Stutts
Mr. and Mrs. Bill Terry
Mr. and Mrs. Pete Thomas
Thomas Howell Ferguson, P.A.
Mr. and Mrs. William L. Tietjen
Tinerbrook Farms, Inc.
Mr. and Mrs. Richard S. Vann
Mr. Sam B. Waddill
Mr. James W. Warren, Jr.
Mr. Richard D. Webb

Mr. and Mrs. Dale Wellendorf
Mr. Roland Wetherbee
Mr. Hoyt H. Whelchel, Jr.
Dr. and Mrs. Dale A. Wickstrum
Mr. and Mrs. Brent Widener
Mr. and Mrs. Jerry Williamson
Mr. Bryan Willis
Willtown Land & Timber Co., LLC
Mr. and Mrs. Mark A. Wilson
Mr. John S. Wise
Mr. Lanier Woodrum

Contributing Member - \$125 - \$249

Mr. Frank Anderson
Mr. and Mrs. Robert W. Balfour
Mr. Stan Barnes
Mr. Craig Barrow III
Mr. and Mrs. Douglas Beach
Mr. C. Duncan Beard
Mr. John P. Beasley, Sr.
Mr. Wayne Bell
Mr. Michael E. Blakeley
Dr. William D. Boyer
Dr. Thomas B. Bragg
Mr. Joseph S. Brannen
Mr. George H. Brannen II

Dr. Peter T. Bromley
Mr. Bobby Brown
Mr. Willard W. Brown, Jr.
Ms. Constance Bruce
Mrs. Judith O. Burgert
Dr. Jeff Byrd
Dr. and Mrs. Michael Carney
Charles Rozier & Associates
Mr. James Cline III
Mr. and Mrs. Oscar T. Cook, Jr.
Mr. and Mrs. James C. Crawford
Dr. and Mrs. Gene L. Davidson
J. Daniel Davis, M.D.
Mr. and Mrs. Walker W. Davis
Mr. and Mrs. Don Davis
Mr. and Mrs. Endicott P. Davison, Jr.
Ms. Cynthia Davison
Mr. and Mrs. Marc Doyle
Mr. Edward Epp
Mr. Chester W. Fannon, Jr.
Mr. Grayal E. Farr
Mr. J. Rex Farrior, Jr.
Mr. Edgar M. Faust
Mr. and Mrs. Robert R. Feagin III
Mr. Monty C. Ferrell
Ms. Susan M. Fitzgerald

Mr. and Mrs. Rick Floyd
Mr. David H. Gambrell
Georgia Forestry Association
Mr. and Mrs. David Gilchrist
Mr. Richard Gilchrist
Ms. Susan P. Glenn
Mr. Benson T. Green
Mr. Jeremy L. Green
Mr. and Mrs. Lane Green
Mr. George F. Grimsley
Mr. Greg Hagar
Dr. and Mrs. Lynn Hagood
Mr. David H. Hardin
Ms. Linda Harp
Mr. Ross Harrison
Mr. Sam Hathcock
Mr. Robert K. Henderson
Mr. and Mrs. Don P. Hicks
Mr. Grover Hicks Jr.
Dr. and Mrs. Louis Hill, Jr.
Mr. Thomas C. Hulsey
Mr. and Mrs. Bernie Hyde
J’s Wine & Spirits
Mr. Clifford W. Johnson
Mr. and Mrs. Chad Jones
Mr. Jeff Jordan
Mr. Ralph Jowett, Jr.
Mr. and Mrs. Lou Kellenberger
Mr. Irv Kenyon
Mr. Terry W. Knepper
Mr. John Larkin
Mr. John Law
Mr. Daniel E. Leckie
Mr. William M. Lee
Mr. Fred Leggett
Mr. and Mrs. Logan M. Lewis
Dr. and Mrs. William D. Long
Mr. Thomas Loughlin
Mr. Charles P. Lykes, Jr.
Mr. and Mrs. Phillip L. Martin
Mr. William A. Martin
Mr. and Mrs. Eric McCollum
Mr. Russell McCutchen
Mr. Charles G. McDaniel
Mr. and Mrs. Mark E. McEwen
Mr. and Mrs. Ted McGraw
Mr. Andy McMullian III
Mr. Harry H. McNeel
Mr. and Mrs. Melvin Merrill
Mr. David J. Middleton
Mr. and Mrs. David J. Middleton
Dr. Oscar M. Mims
Mr. and Mrs. Emmett Mitchell III
Mr. and Mrs. Ed Moody
Ms. Julie H. Moore
Mr. Alexander G. Morehouse



Attendees at the 2014 Fall Field Day held at Dixie Plantation learn about land management for quail on the property. Photo by Rose Rodriguez

Mr. and Mrs. Nigel E. Morris
Mr. and Mrs. Danny Murphy
Mr. and Mrs. Perry Mustian
Mr. and Mrs. Charles Olson
Mr. and Mrs. Joel Padgett
Mr. and Mrs. Richard Parker
Mr. Jack Pierce
Mr. Phillip Pomeroy
Mr. James W. Reid Jr.
Mr. Lawrence M. Rennell
Mr. David Rivenbark
Mrs. J. B. Roddenbery, Jr.
Dr. and Mrs. John Sanders
Mr. James L. Schortemeyer
Mrs. Kathleen R. Scott
Mr. John G. Shaw
Dr. and Mrs. Terry W. Sherraden
Mr. and Mrs. Allen Skinner
Mr. Drane Smith
Mr. and Mrs. Robert J. Sniffen
Mr. Lee Stone
Mr. and Mrs. Rob Telfer
Mr. and Mrs. Bill Terry
Mr. and Mrs. Reggie Thackston
Mr. Theodore F. Thomas, Jr.
Mr. Robert M. Trulock
Dr. Ben M. Turner
Mr. Lewis C. Tyus, Jr.
Ms. Virginia A. Vail
Mrs. Kathleen Vignos
Mr. Robert N. Walthall
Mr. Jody Walthall and Ms. Donna Legare
Mr. William R. Watson
Mr. Billye L. West
Mr. Palmer Williams

Dr. and Mrs. John L. Williams
Mr. Robert D. Woodward
Mr. Pat Woodward
Mr. Michael Wrenn
Mr. and Mrs. Geoffrey P. Young

GAME BIRD PROGRAM SUPPORT

Pamela H. Firman Red Hills Quail Management Research Program (QMR)

Mr. Jeff Alexander
Dr. Carol Allman and Mr. Kenneth L. Allman
American Wildlife Enterprises
Mr. Wendall Arrington
Mr. and Mrs. C. DuBose Ausley
Dr. Gail S. Baker
Mr. Bernard C. Baldwin III
Mr. and Mrs. R. C. Balfour III
Mr. and Mrs. Robert W. Balfour
Mr. and Mrs. Mack Barfield
Mr. Stan Barnes
Mr. and Mrs. Richard R. Barnett, Sr.
Mr. Craig Barrow III
Mr. Bryant Beadles
Mr. Theo B. Bean, Jr.
Mr. C. Duncan Beard
Mr. and Mrs. Joe E. Beverly
Miss Wendy H. Bicknell
Mr. Michael E. Blakeley
Mr. James F. Bland III
Mr. Edward S. Bonnie
Dr. and Mrs. Gary Bonvillian
Mr. and Mrs. Allan M. Bostick Jr.
Dr. William D. Boyer
Mr. Joseph S. Brannen
Mr. Bill Brannen



The Orianne Society held their fourth annual “Places You’ve Never Herped Event” at Dixie Plantation in April 2014. The event was hosted by Tall Timbers. Pictured above at Dixie is herpetologist, Pierson Hill, who gave a presentation on rare amphibians of the Florida Panhandle; Conservation Biologist Kim Sash gave a presentation on Tall Timbers Land Conservancy’s conservation efforts in the Red Hills. Photo by Kim Sash. Inset, Kim Sash with an alligator she found and released during the Bio Blitz. Photo by Piersen Hill.

Dr. and Mrs. Clifford S. Bristol
Mr. Willard W. Brown, Jr.
Mr. and Mrs. Joe E. Brown
Mr. W. Wheeler Bryan
Mr. and Mrs. J. R. Bryant, Jr.
Mrs. Woodward Burgert
Mr. Robert F. Burgin III
Mr. Harry Burn III
Mr. L. Hardwick Caldwell
Mr. R. R. M. Carpenter
Mr. and Mrs. Alvin R. Carpenter
Mr. and Mrs. Roger Champion
Mr. and Mrs. Charles M. Chapin III
Mr. J. Palmer Clarkson
Mr. James Cline
Mr. J.R. Cochran
Mr. and Mrs. William D. Colledge
Mr. and Mrs. Richard A. Corbett
Mr. Leon H. Corbett III
Ms. Jean Coyne
Mr. and Mrs. James C. Crawford
Mr. Dale C. Critz
Mr. and Mrs. William F. D'Alonzo
Mr. and Mrs. Joseph H. Davenport III
Dr. and Mrs. Gene L. Davidson
Mr. Oscar S. Davis
Mr. and Mrs. Walker W. Davis
J. Daniel Davis, M.D.
Mr. and Mrs. Don Davis
Mr. and Mrs. Walt Davis
Mrs. Endicott P. Davison
Mr. Thomas R. Devlin
Mr. Robert S. Doochin
Ms. Marion S. Drake
Duck Haven Gun Club
Mr. William A. Dupre' III
Mr. Edward Epp
Mr. Chester W. Fannon, Jr.
Mr. Edgar M. Faust
Mr. Monty C. Ferrell
Mr. David E. Ferro
Firman Fund
Ms. Susan M. Fitzgerald
Florida Fish and Wildlife Conservation Commission (FFWC)
Mr. and Mrs. Rick Floyd
Mr. and Mrs. C. David Fonvielle
Mr. Todd Ford
Foundation for the Carolinas, Tom and Kathy Ewing Fund
Dr. T. Gray Fountain
Miss Patricia Gainey
Mr. Sam Gary II
Georgia Forestry Association
Ms. Susan P. Glenn
Golden Brothers Company, Inc.
Mr. and Mrs. Thomas D. Gordon
Mr. Sanders Grantham



From left, Stoddard Bird Lab Director, Jim Cox, Paddy Wade and others at the Wade Tract Preserve looking for Bachman's Sparrows to capture in the mist net (Jim is carrying) so they can be banded. Photo by Tara Tanaka.

Mr. Terence M. Graunke
Mr. and Mrs. Lane Green
Mr. Benson T. Green
Mr. Michael B. Greene
Mr. and Mrs. Ralph G. Greene
Mr. George F. Grimsley
Mr. Greg Hagar
Dr. and Mrs. Lynn Hagood
Mr. and Mrs. Frederic C. Hamilton, Sr.
Mr. Dan W. Hammack, Jr.
Mr. Matthew Haney
Mr. David H. Hardin
Ms. Linda Harp
Mr. and Mrs. Michael S. Hartman
Mr. Jay C. Harvard
Mr. J. Madden Hatcher, Jr.
Mr. Mason Hawkins
Dr. and Mrs. Rudolf Hehn
Mr. Nathan V. Hendricks III
Mr. Tom Hess
Mr. and Mrs. Don P. Hicks
Mr. Grover Hicks Jr.
Reverend David G. Hortin
Mr. and Mrs. Sloan Howard
Mr. Sherrill W. Hudson
Mr. William J. Hurst
Mr. and Mrs. Melville H. Ireland, Jr.
Mr. and Mrs. Bob Izlar
Mr. Robert Jenkins
Mr. and Mrs. Rhett Johnson
Mr. and Mrs. Chad Jones
Mr. Tom Jones
Mr. and Mrs. Edwin A. Joyce, Jr.

J's Wine & Spirits
The Kate Ireland Foundation
Mr. and Mrs. Samuel B. Kellett, Sr.
Dr. Kristin E. Kentopp
Mr. Irv Kenyon
Mr. and Mrs. Rip Kirby
Mr. and Mrs. Bryan F. Knox
Mrs. W. F. Ladson Jr.
Mr. and Mrs. Bernard Lanigan
Mr. John Larkin
Mr. John Law
Mr. William M. Lee
Mr. Michael J. Lee
Mr. Fred Leggett
Mr. and Mrs. Logan M. Lewis
Dr. and Mrs. John R. Lewis, Ph.D.
Dr. J. Leonard Lichtenfeld and Dr. Sandra B. Reed
Mr. Robert E. Livingston III
Mr. James A. Lockwood
Louisiana Department of Wildlife and Fisheries (LDWF)
Dr. and Mrs. Charles G. Long
Mr. Michael C. Long
Dr. and Mrs. William D. Long
Mr. John A. Loomis
Mr. Tyler L. Macmillan
Mr. William A. Martin
Mr. and Mrs. Phillip L. Martin
Mr. and Mrs. James N. McConaughay
Mr. George T. McCutchen, Jr.
Mr. Russell McCutchen
Mr. Charles G. McDaniel
Mr. Mitch McElroy
Mr. and Mrs. Mark E. McEwen

Mr. John McFadden
Mr. L. R. McGowan
Mr. and Mrs. Ted McGraw
Mr. Kevin McKinstry
Mr. and Mrs. Robert R. McLendon
Mr. Andy McMullian III
Mr. Harry H. McNeel
Dr. and Mrs. Douglas C. McPherson
Mr. and Mrs. David J. Middleton
Mr. Payne H. Midyette, Jr.
Dr. and Mrs. Karl Miller
Ms. Julie Miller
Mr. and Mrs. Emmett Mitchell III
Mr. W. S. Montgomery, Jr.
Mr. and Mrs. Ed Moody
Arthur V. Moore, D.V.M.
The Moore Charitable Foundation, Inc.
Mr. and Mrs. Nigel E. Morris
Dr. William B. Mulherin
Mr. and Mrs. John H. Mullin
Mr. and Mrs. Danny Murphy
Mr. Jeff Naylor
Mr. and Mrs. Charles Newlin, Jr.
Mr. Strick Newsom
Mr. and Mrs. Charles Olson
The Orvis Company, Inc.
Mr. and Mrs. Albert M. Park
Mr. and Mrs. Richard Parker
Parker Poe Charitable Trust
Mr. Joseph B. Penick
Mr. Everall D. Perkins
Mr. Phillip Pomeroy
Mr. David B. Poole
Mr. and Mrs. Clifford M. Preston
Mr. and Mrs. Tom L. Rankin

Mr. and Dr. Maitland R. Remington, Jr.
Mr. Chuck Ribelin
Mr. David Rivenbark
Mr. Sonny Roberts
Mr. James M. Robinson, IV
Mrs. J. B. Roddenbery, Jr.
Mr. Theo Rumble Jr.
The Samuel E. Upchurch, Jr. Charitable Foundation
Dr. and Mrs. Charles R. Sanders
Dr. and Mrs. John Sanders
Mr. Terry L. Sharpe
Mr. John G. Shaw
Mr. Eddie Sholar
Dr. and Mrs. George W. Simmons
Mr. and Mrs. William P. Smith, Jr.
Dr. and Mrs. J. Orson Smith
Mr. and Mrs. M. Todd Smith
Dr. Terry Smith
Mr. Drane Smith
Ms. Sue E. Smith
Robert M. Snider, M.D.
Mr. Christian R. Sonne
South Jersey Quail Project
Mr. Lee Stone
Mr. Del Suggs and Mrs. Denice D. Jones
Dr. and Mrs. Brian Swarc
Mr. and Mrs. Reggie Thackston
Mr. Theodore F. Thomas, Jr.
Mr. and Mrs. William L. Tietjen
Mr. Robert M. Trulock
Tudor Farms
Mr. David M. Turner
Mr. Lewis C. Tyus, Jr.
United States Department of Agriculture (USDA)/
United States Forest Service (USFS)



Tall Timbers thanks Lee & Buck Mitchell for their wonderful stewardship of Pine Fair Plantation and generous conservation easement donation. The Mitchells are pictured here with George Watkins, Tall Timbers Land Conservancy Committee Chairman. Photo by Rose Rodriguez

Mr. Samuel E. Upchurch Jr.
Mr. and Mrs. Thomas V. H. Vail
Mr. and Mrs. Richard S. Vann
Mrs. Jephtha V. Wade
Mr. Richard B. Wagner
Mr. Robert N. Walthall
Mr. James W. Warren, Jr.
Mr. and Mrs. George C. Watkins
Mr. William R. Watson
Mr. and Mrs. Dale Wellendorf
Mr. Tom C. Weller, Jr.
Mr. Billye L. West
Mr. Parker Westbrook
Mr. Roland Wetherbee
Mr. E. John Whelchel
Dr. and Mrs. Dale A. Wickstrum
The William Stamps Farish Fund
Mrs. Marianne J. Williams
Mr. and Mrs. Blair Williams
Mr. Palmer Williams
Mr. Myron Williams
Mr. and Mrs. Jerry Williamson
Mr. Bryan Willis
Mr. John S. Wise
Mr. J. E. Witherington
Mr. Mark Worthey
Mr. and Mrs. Geoffrey P. Young

Albany Quail Program

Anonymous
Becker Trading Company
Mr. Joseph S. Brannen
CEC Georgia Properties, LLC
Mr. A. James Clark
Mr. and Mrs. Richard S. Cuda
Mr. and Mrs. Joseph H. Davenport, IV
Mr. and Mrs. Ward Davenport
Deer Run Investments, LLC
Mr. and Mrs. Jim Edenfield
Mr. and Mrs. Lawrence Flinn, Jr.
Mr. Frank Foley III
Franklin Family Farm
Mr. Mike Goodrich
Mr. Jim Hamilton
Mr. Raymond J. Harbert
Mr. Robin Hayes
Mr. John Izard
Dr. H. George Jarrell, Jr.
Johnston Family Foundation
Jones Family Fund
Kolomoki Plantation
Nilo Plantation
Nonami Oglethorpe, LLC
Mr. Robert Nunnally
Pinebloom Plantation
Pineknoll Pecan Properties, LLC

R. K. Mellon Family Foundation
Mr. Frank C. Robson
Senah Plantation, LLC
Mr. and Mrs. Warren Stephens
Ms. Virginia A. Swift
Mr. Remy Trafelet
Mr. Frank Wetherbee
Mr. and Mrs. Leslie Wexner
William Howard Flowers, Jr. Foundation, Inc.
Mr. Bryan Willis

South Carolina Quail Program

Mr. and Mrs. Darnall W. Boyd
Dr. and Mrs. William Cain Jr.
Mr. Gregory Callimanopulos
Mr. William L. Clyburn
Mr. Jack Cooper
Mr. and Mrs. Stephen M. Creech
Mr. and Mrs. Robert E. Delapp
Elliott Sawmilling Co, Inc
Henry J. Faison Estate
Mr. Lane Faison
Mr. Art Fields
Mr. and Mrs. E. C. Franklin
Mr. Edmund H. Hardy
Mr. Hayne Hipp
JCK Foundation, Inc.
Mr. Mike Lockhart
M.T. Laffitte Farm
Mr. H. Gordon Maxwell
Mead Westvaco Corporation
Mr. John R. Parker
Pendarvis Law Offices, P.C.
Mr. William H. Prestage
Mr. Tommy M. Rhodes
Seymour H. Knox Foundation, Inc.
Sleyhem Game Products
South Carolina Dept. of Natural Resources
The Strachan Donnelley Family Charitable Fund
Mr. Reed Turner

Mid-Atlantic Quail Program

Mr. and Mrs. William F. D’Alonzo
New Jersey Audubon Society
Dr. Henry Sears

Upland Ecosystem Research Restoration (UERP)

Florida Forest Service
Florida Fish and Wildlife Conservation Commission
U. S. Department of Agriculture Forest Service
Florida Department of Environmental Protection



The Library collaborated with the Archives on a mapping project to inventory, digitize and catalog the entire Tall Timbers map collection. Capitol City Bank Group Foundation awarded Tall Timbers a \$2000 grant to help with the project. Pictured left to right, Dale Fuller, Development Director, Jim Scarboro, Senior Vice-President Capital City Bank and Carol Kimball, Librarian. Photo by Rose Rodriguez

Fall Field Day Sponsors

Ag-Pro, LLC
American Forest Management
Clanton, Malphus Veterinary Hospital
Hancock & Sons
Helena Chemical
Jack’s Boats \$ Trailers
Lester Plein & Son
Mead Westvaco Corporation
Mills Well Drilling
Plantation Security, Inc
Plantation Supply
The Orvis Company
The Wright Group
Waukeenah Fertilizer
Wildlife Trends

INFORMATION RESOURCES SUPPORT

Parker-Williams Library

Capital City Bank
Panhandle Library Access Network
USDA Forest Service/Southern Fire Exchange

Webster Art Gallery

Cherokee Foundation

LAND MANAGEMENT SUPPORT

Florida Department of Agriculture and Consumer Services (FDACS)

LAND CONSERVANCY SUPPORT

General Program Support

Dr. Scott Hannahs
Dr. and Mrs. Louis Hill, Jr.
Ms. Julie H. Moore
Mr. and Mrs. Steve Swartz

Stewardship Fund

Big Bend Wildlands Preserve
Mr. Henry L. Crisp
Merrily Plantation, Inc
Pine Fair Plantation
Mrs. Lelia Reynolds

Red Hills Planning Coordinator

Mr. and Mrs. Craig A. Bruner
Turner Foundation, Inc.
William Howard Flowers, Jr. Foundation, Inc.
Williams Family Foundation of Georgia, Inc.

Conservation Biologist

Big Bend Wildlands Preserve
The Perkins Charitable Foundation
Turner Foundation, Inc.

Red Hills Defense Fund

Mr. Anthony Jonklaas
William Howard Flowers, Jr. Foundation, Inc.

Greater Red Hills Awareness Initiative

The Archibald Foundation, Inc.
Mr. and Mrs. Thomas A. Barron
Betsy Barfield Photography
Bradley Turner Foundation
Mr. Greg Hagar
Mr. Mason Hawkins
Mr. Paul Tudor Jones II
Kevin’s of Thomasville, Inc.
Mr. and Mrs. Richard G. Mooney
Parker Poe Charitable Trust
Mr. and Mrs. Colin S. Phipps
Ms. Melissa Proctor
Mr. and Mrs. Witt R. Stephens, Jr.
Sweetgrass Foundation
Mrs. Kathleen Vignos
Mr. and Mrs. George C. Watkins
Dr. and Mrs. Philip C. Watt

OUTREACH & EDUCATION SUPPORT

Jager Pro, LLC
Mr. John E. Phipps

RESEARCH PROGRAM SUPPORT

Fire Ecology Program

Mr. Paul Tudor Jones II
Pineknoll Pecan Properties, LLC
U. S. Department of Agriculture/U. S. Forest Service
Mr. and Mrs. Richard S. Vann
Westervelt Wildlife Services
Mr. Michael R. Wetzel
Mr. and Mrs. Rick Zelznak

Stoddard Bird Lab

The Archibald Foundation, Inc.
Mr. and Mrs. Douglas Beach
Miss Wendy H. Bicknell
Mr. and Mrs. Warren Bicknell III
Mr. and Mrs. Charles M. Chapin III
Ms. Cynthia Davison
Dr. Todd Engstrom
Francis M. Weston Audubon Society
Georgia Department of Natural Resources (GDNR)
Georgia Ornithology Society
Ms. Carmella Greenwood
Mr. Robert K. Henderson

Mr. Redmond S. Ingalls
Mr. Anthony Jonklaas
Dr. and Mrs. John R. Lewis
Native Nurseries of Tallahassee, Inc
Orange Audubon Society
Mrs. D. Williams Parker
Mr. John E. Phipps
Robert K. Johnson Foundation
South Georgia Native Plant & Wildflower Symposium
Mr. and Mrs. George C. Watkins
Mr. and Mrs. Alan M. Willemsen
Mrs. Teresa E. Williams
Mr. and Mrs. C. Martin Wood III

Wade Tract Research Program

Mr. Jody Walthall and Ms. Donna Legare
Mrs. Wendy Curtis
Ms. Jean J. Rousseau

DIXIE PLANTATION

Ms. Susannah Borg
Mr. Joseph S. Brannen
Mr. and Mrs. Henry Bush
Mr. Larry H. Casey
Mr. Mike Cheely
Mr. Butch Coarsey
Mr. and Mrs. Charles E. Commander III
Continental Field Trial Club

Ms. Jean Coyne
Mr. Paul DeLoach
Mr. Freddie Epp
Mr. Mercer Fearington, Sr.
Mr. Richard Furney
Mr. William W. Goodrich
Mr. John M. Harmon
Mr. Mason Hawkins
Ms. Betty Horton
Dr. John D. Huffman
Mr. and Mrs. Bill Hunt
Mr. P. C. Jackson
Mr. Wayne Lane
Mr. Gary Lester
Mr. Billy M. McCathern
Ms. Julie Miller
Mr. George Moreland III
Nestle Purina
Mr. and Mrs. Tom L. Rankin
Mr. Cecil R. Rester, Jr.
Mr. Wallace E. Sholar, Jr.
Mr. Steve Standley
Mr. Donald K. Stroble
Mr. Paul Taber
Mr. and Mrs. Bill Terry
Mr. Isaac Todd
William Howard Flowers, Jr. Foundation, Inc.
Mr. David E. Williams
Mr. Gary S. Winall
Mr. and Mrs. C. Martin Wood III



The 2014 Continental Field Trial Winners: John Dorminy, Tony Reynolds and Robin Gates with Shadow’s Full Throttle; Scott Jordan and Mike Wrenn with Erin’s Wild Justice. Standing: Chastain Wardlaw, Steve Standley, Clay Sisson, Alpha Bright, Gloria Hagan, Judge Torben Hansen, Paul Meadows, John Finlayson, Jim Tande, Judge Mike Cheely, John Thompson, Randy Floyd, and Terry Chastain.

TALL TIMBERS FOUNDATION

The Tall Timbers Foundation manages the Tall Timbers Endowment Funds, those long-term assests that help fund research, conservation and support programs at Tall Timbers.

Endowment Fund Contributors

- Mrs. Wendy Curtis
- Dr. John P. Curtis
- Mr. Mason Hawkins
- Mr. and Mrs. Melville H. Ireland, Jr.
- Mr. Harry T. Jones III
- The Kate Ireland Foundation
- Mr. and Mrs. Samuel B. Kellett, Sr.
- Ms. Jean J. Rousseau
- Mr. and Mrs. Witt R. Stephens, Jr.
- The Thomas M. Kirbo and Irene B. Kirbo Charitable Trust
- Mr. Jody Walthall and Ms. Donna Legare
- Mr. and Mrs. C. Martin Wood III

2014 Kate Ireland Memorial Auction & Dinner Contributors

Sponsors:

- Bird Dog Bottle Company
- Childers Construction Company
- Gandy Printers
- Highland Associates
- Jon Kohler & Associates, LLC
- Mr. and Mrs. Martin C. Wood III



Development Director, Dale Fuller, and President/CEO Bill Palmer with the 2014 Kate Ireland Memorial Auction Catalog, getting ready for the guests to arrive and the bidding to begin at the auction. Photo by Rose Rodriguez



Guests at the 2014 Kate Ireland Memorial Auction & Dinner. Photo by Rose Rodriguez

- Mr. and Mrs. Michael M. Ledyard
- Mrs. Kathy R. Archibald
- Network Technology Solutions
- Parker Poe Charitable Trust
- The Lanigan Group
- The Wright Group

Auction Donors:

- The Moore Charitable Foundation, Inc.
- Blackwater Timber Company
- Ms. Sugar Blount
- Mr. Thomas Brooks
- Browning - Winchester
- Cairo Animal Hospital
- CEC Georgia Properties, LLC
- Chic Verte
- Mr. C.D. Clarke
- Mr. and Mrs. Richard A. Corbett
- Mr. James H. Dahl
- Mr. and Mrs. William F. D’Alonzo
- Mr. and Mrs. Edward A. Davis, Jr.
- Dr. John B. Davis
- Mr. Howell L. Ferguson and Dr. Sharon Maxwell
- Mrs. Ali Gentry Flota
- Gem Land Company
- Mr. Benson T. Green
- GTO Access Systems
- Mr. Greg Hagar
- Mr. and Mrs. Frederic C. Hamilton, Sr.
- Mr. Allen Hendrix
- Kevin’s of Thomasville, Inc.
- Kohler & Associates LLC
- Mr. and Mrs. David Lanier
- Liam’s Restaurant
- Mac’s Wingshooting Adventures
- Ms. Marcie Maddox
- Mr. Walter Matia
- Mr. Walter E. Melton, Jr.
- Ms. Ann Melton
- My Favorite Things
- Mystic Pines Kennels
- Native Nurseries of Tallahassee, Inc.
- The Orvis Company

- Dr. Bill Palmer
- Mrs. D. Williams Parker
- Premier Health & Fitness Center
- Mr. and Mrs. W. Stanley Proctor
- Mr. Brian Proctor
- Mr. and Mrs. Tom L. Rankin
- Mr. Charles W. Roberts III
- Red Hills Quail Forever
- Dr. and Mrs. George W. Simmons
- Mr. and Mrs. M. Todd Smith
- Southern Seafood
- Sweet Grass Dairy
- Thomasville YMCA
- Mr. and Mrs. Ebe Walter
- Mr. and Mrs. George C. Watkins
- Ms. Peggy Watkins
- Dr. and Mrs. Philip C. Watt
- Mr. Tom C. Weller, Jr.
- Dr. Robin Wise
- Mr. and Mrs. C. Martin Wood III
- Mr. and Mrs. Rick Zelznak

MEMORIALS/HONORARIUMS

Memorials

- Marian Langford Trust in memory of Mr. George Langford
- Nancy, Peter, and Claire Kelly in memory of Mr. Thomas Heerema
- Mr. and Mrs. Jesse McKenney in memory of Mr. Thomas Heerema
- Betsey Barfield Photography in memory of Mr. Billy Hughes
- Duck Haven Gun Club in memory of Mr. Robert Jinright
- Duck Haven Gun Club in memory of Mr. Harry Jones, Jr.
- Mr. George McCutchen, Jr in memory of Dr. George T. McCutchen

Honorariums

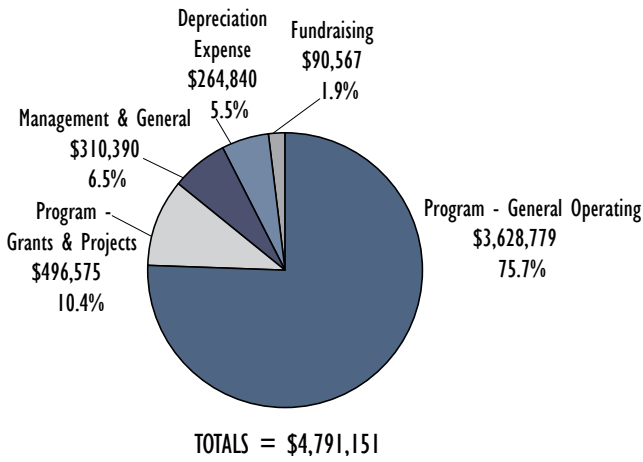
- Dr. Arthur V. Moore in honor of “Sport” and “Lady”
- Jean J. Rousseau in honor of the Wade and Sedgwick Families of Millpond Plantation

Statement of Financial Position

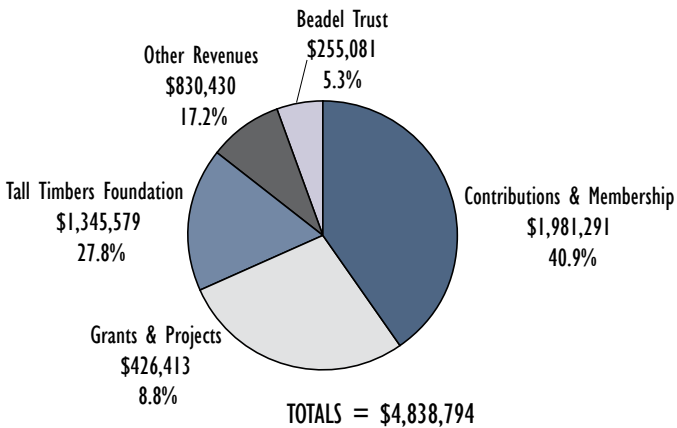
TALL TIMBERS RESEARCH, INC.

	TOTAL ALL FUNDS	TOTAL ALL FUNDS
ASSETS	12/31/2014	12/31/2013
Current Assets		
Cash & Cash Equivalents	\$1,675,659	\$1,221,774
Accounts Receivable	26,463	35,599
Grants/Projects Receivable	130,953	105,822
Pledges Receivable (Net)	30,437	50,754
Due from Tall Timbers Foundation, Inc. (Net)	119,032	106,727
Prepaid Expenses	74,966	45,567
Total Current Assets	\$2,057,510	\$1,566,243
Property & Equipment		
At Cost less Accumulated Depreciation	\$34,169,578	34,132,165
Other Assets	34,419	33,889
TOTAL ALL ASSETS	\$36,261,507	\$35,732,297
LIABILITIES & NET ASSETS		
Current Liabilities		
Accounts Payable	110,029	\$49,296
Accrued Liabilities	15,972	4,580
Notes Payable	23,628	42,043
Deferred Revenue	164,954	1,937
Total Liabilities	\$314,583	\$97,856
NET ASSETS		
Unrestricted	34,041,645	\$34,193,924
Temporarily Restricted	1,531,155	1,066,393
Permanently Restricted	374,124	374,124
Total Net Assets	\$35,946,924	35,634,441
TOTAL LIABILITIES & NET ASSETS	\$36,261,507	\$35,732,297

Allocation of Funds



Sources of Revenue



2014 Staff & Associates

ADMINISTRATION

William E. Palmer, PhD, President/CEO
Melissa Proctor, Controllor
Lisa Baggett, Facilities/Operations Coordinator
Jerome Golden, Facilities Manager
Curtis Johnson, Facilities Manager (through August)
Rosi Nichols, Accountant
Joe Noble, GIS/Information Technology Coordinator
Charity Whiddon, Accounting Assistant/Board Administrative Assistant (through July 2014)

DEVELOPMENT

Dale Fuller, Development Director
Starr Askew, Development Assistant (through November)
Sarah Manwaring, Development and Marketing Assistant

INFORMATION RESOURCES

Rose Rodriguez, Communications Director
Carol Armstrong Kimball, Librarian*
Faye Salis, P/T Library Assistant*
Juanita Whiddon, P/T Archives, Records Management & Historical Resources



Tall Timbers staff at February 2014 outreach event; left to right: Georgia Ackerman, Kim Sash, Neil Fleckenstein and Lisa Baggett.

TALL TIMBERS LAND CONSERVANCY

Kevin McGorty, Director
Georgia Ackerman, Project Manager, Greater Red Hills Awareness Initiative*
Lauren Claude, P/T File Clerk (through August 2014)
Neil Fleckenstein, Planning Coordinator
Jennifer Roberts, Administrative Assistant
Kim Sash, Conservation Biologist*
Shane D. Wellendorf, Conservation Coordinator

RESEARCH & LAND MANAGEMENT

William E. Palmer, PhD, Director of Research
Allan (Bud) Bostick, Biologist, Game Bird Research
Petis Bright, Land Management Technician, Dixie Plantation
Sarah K. Brown, Public Lands Monitoring Coordinator
Andrew Chase, Land Management Technician
Jim Cox, Research Scientist, Stoddard Bird Lab Director
Joe Davis, Land Management Technician, Dixie Plantation
Miguel DeVilla, Technician, Stoddard Bird Lab
Randy Floyd, Manager, Dixie Plantation
Elizabeth Foley, Technician, South Carolina Game Bird
Kaye Gainey, Research Department Coordinator
Gloria Hagan, Facilities Coordinator, Dixie Plantation
Jean Huffman, Technician, Fire Ecology
Alex Jackson, Game Bird Technician, Dixie Plantation
Brenna Kelly, Administrative Assistant, Dixie Plantation
John-Michael McCormick, Land Management Technician, Dixie Plantation
Diana McGrath, Technician, South Carolina Game Bird Project*
Paul Meadows, Land Management Technician, Dixie Plantation
Kellie Phillips, Technician, Game Bird Research*
Angie Reid, Fire Ecologist (through November 2014)
Kevin M. Robertson, PhD, Research Scientist, Director, Fire Ecology Program
Elliott Schunke, Technician, Stoddard Bird Lab
Greg Seamon, Fire Training Specialist, National Interagency Prescribed Fire Training Center*
Clay Sisson, Director, Albany Quail Project
David Sisson, Game Bird Technician, Albany Quail Project/Dixie Plantation
Sherwin Smith, Biologist, Albany Quail Project (through November 2014)
Eric Staller, Natural Resources Coordinator
Theron Terhune, PhD, Robert C. Balfour, Jr., Game Bird Management Research Fellow, Director Game Bird Research Program
Elsiha Tretyak, Technician, Game Bird Research
James Tucker, Technician, Upland Ecosystem Restoration Project
Adam White, Technician, Albany Quail Project
Seth Wood, Technician, Game Bird Research*

RESEARCH INTERNS

Alison Bleich, MO, Game Bird Research
Caitlyn Brig, SC, South Carolina Game Bird Research
Joanna Ennis, FL, Game Bird Research
Cassidy Jordan, GA, Game Bird Research
Patrick Kimball, MS, Fire Ecology Research
Michael Maltba, NC, Game Bird Research
Jamie Peeler, NC, Fire Ecology
Michael Porter, FL, Fire Ecology
Jessica Reha, MI, Game Bird Research
Emma Schlatter, MN, Stoddard Bird Lab
Alexander Taylor, OH, Stoddard Bird Lab
Curtis Walker, SC, Stoddard Bird Lab

VISITING RESEARCHERS

David Almquist, Florida Natural Areas Inventory
Jake Blackstock, Auburn University
Dale G. Brockway, USDA-Forest Service
Mark A. Deyrup, PhD, Archbold Biological Station
Graham Hickling, PhD, University of Tennessee
Jason Fridley, PhD, Syracuse University
Dean & Sally Jue, Florida State University
Gina Kent, Avian Research & Conservation, Inc.
Ken Meyer, PhD, Avian Research & Conservation, Inc.
Heinz Muller-Scharer, PhD, University of Fribourg, Switzerland
Amanda Powell, Avian Research & Conservation
Jean Tsao, PhD, Michigan State University
Jennifer J. Weber, PhD, Fordham University, Bronx, NY
Justin Wright, PhD, Duke University

GRADUATE STUDENTS/VISITING GRADUATE STUDENTS

Douglas B. Booher, University of California Los Angeles, PhD Candidate
Carina Baskett, Michigan State University, PhD Candidate
Jessica Cusick, Florida State University, PhD Candidate
James Garrett, Clemson University, MS Candidate
Aaron Griffith, University of Tennessee, MS Candidate
Dave Gruenewald, University of Florida, MS Candidate
Ryan Haley, MS Student, Delaware State University
Alex Jackson, MS Student, University of Georgia
Jesse Kamps, Mississippi State University, MS Candidate
Derek Law, University of Kentucky, PhD Candidate
Will Macaluso, MS Student, University of Delaware
Mark Margres, Florida State University, PhD Candidate
Mark McConnell, PhD Candidate, Mississippi State University
Diana McGrath, MS Student, University of Georgia
Genevieve Pang, Michigan State University, PhD Candidate
Kellie Phillips, University of Georgia, MS Candidate
Thomas Radzio, Drexel University, PA, PhD Candidate
Seth Sofferin, University of Georgia, MS Candidate
Elizabeth Spriggs, Yale University, PhD Candidate
Seth Wood, MS Student, University of Georgia

COLLABORATIVE RESEARCH

David Buehler, PhD, University of Tennessee
Danny Caudill, MS, Florida Fish and Wildlife Conservation Commission
John Cecil, New Jersey Audubon
Robert J. Cooper, PhD, Warnell School of Forestry, University of Georgia
Andrew Cox, PhD, Florida Fish and Wildlife Conservation Commission
Emily DuVal, PhD, Florida State University
Brant Faircloth, PhD, Louisiana State University
Yuch-Ping Hsieh, PhD, Florida A&M University
Alan J. Long, PhD, Southern Fire Exchange, University of Florida
Bob Long, MS, Maryland Department of Natural Resources
James Martin, PhD, Mississippi State University
Karl V. Miller, PhD, Warnell School of Forestry, University of Georgia
John Parke, New Jersey Audubon



Dixie Staff. Bottom row, left to right: Gloria Hagan, Clay Sisson, Paul Meadows, Randy Floyd. Top row, left to right: John Michael McCormick, David Sisson, Joe Davis, Alex Jackson, Brenna Kelly, Alpha Bright.

Dan Small, Chester River Field Station, Center for Environment and Society
John L. Seidel, PhD, Washington College, Center for Environment and Society
Roger Shields, MS, Florida Fish and Wildlife Commission
Skip Van Bloem, PhD, Clemson University
Chris Williams, PhD, University of Delaware
Rodney Will, PhD, Oklahoma State University

RESEARCH ASSOCIATES

Andre F. Clewell, PhD, Botanist, Ellenton, FL
R. Todd Engstrom, PhD, Vertebrate Ecology
Jeff Glitzenstein, PhD, Fire Ecology
Craig Guyer, PhD, Department of Biological Sciences, Auburn University
Sharon M. Hermann, PhD, Department of Biological Sciences, Auburn University
Bruce Means, PhD, Coastal Plains Institute
W. J. Platt, PhD, Louisiana State University
Donna Streng, PhD, Fire Ecology

PARTNERS

Southern Fire Exchange | University of Florida

David Godwin, PhD, Program and Outreach Coordinator

Florida Fish and Wildlife Conservation Commission (FWC)

Greg Hagan, FWC Northern Bobwhite and Upland Ecosystem Restoration Project Director*

BEADEL FELLOWS

Jeff Glitzenstein, PhD
Gil Nelson, PhD
William J. Platt, PhD
Donna Streng, PhD

*Grant or contract funded position
P/T = part-time



Research Station & Land Conservancy

13093 Henry Beadel Drive | Tallahassee, FL 32312

850/893-4153 PH | 850/893-6470 FAX

www.talltimbers.org

Tall Timbers Research, Inc.
is a charitable,
tax-exempt organization
specializing in
research, conservation and education.
Established 1958.

Stewards of Wildlife & Wildlands



ADDRESS SERVICE REQUESTED

Non-profit Org.
U.S. POSTAGE
PAID
Permit No. 236
Tallahassee, FL

ANNUAL REPORT EDITING & DESIGN - ROSE RODRIGUEZ

 PRINTED ON RECYCLED PAPER



A nice prescribed burn.
Photo by David Godwin

About the photos on the front cover, clockwise from top right: bobwhite calling, by Joanna Ennis; David Godwin monitoring a prescribed burn at the Wade Tract Preserve, by Kevin Robertson, 2014 Fall Field Day attendees leaving on the field tour, by Rose Rodriguez; Bachman's sparrow, by Tara Tanaka; "On the Edge, Red Hills," watercolor painting by C.D. Clarke; "Move Tallahassee" walk held at Tall Timbers in January 2014, by Rose Rodriguez.