



TALL TIMBERS

2018 Annual Report



# ANNUAL REPORT



## Contents

Research .....	4
Conservation .....	10
Support .....	12
Honorariums/Memorials .....	20
Tall Timbers Foundation .....	21
Staff .....	22
Statement of Financial Position .....	23

*On the front cover:* Carolina Regional Quail Project biologist Paul Grimes releases a covey bobwhites translocated from the Red Hills to a property in South Carolina. Photo extracted from a video by Reggie Thackston.

*On the back cover:* scenes from the 2018 Continental Field Trials at Dixie Plantation, which is owned by Tall Timbers. Dixie teams with the Continental Field Trial Club to host the Annual Continental Open Derby and All-Age Championship Field Trials each year since 1937. Photos by Rose Rodriguez

## Mission

The mission of Tall Timbers is to foster exemplary land stewardship (ELS) through research, conservation and education. Our primary research focus is the ecology of fire and natural resource management including bobwhite quail and other wildlife in the southeastern coastal plain. Our conservation efforts are dedicated to helping protect the distinctive Red Hills landscape of south Georgia and north Florida, and its traditional land uses. Our education program transfers research and conservation information for resource management.



Tall Timbers had another successful year in 2018, with mission-oriented growth in our research, conservation and outreach programs.

A few highlights include:

- Secured 8 donated conservation easements now exceeding 149,000 acres protected
- Translocated our 5000<sup>th</sup> bobwhite from the Red Hills to create new sustainable populations
- Conducted a first translocation of Brown-headed Nuthatches to a Florida State Park
- Awarded over \$5 million in research grants for prescribed fire and wildlife conservation
- Created the Tall Timbers private lands burn team to teach landowners about prescribed fire

Each of these activities leads to more wildlife habitat managed with exemplary land stewardship (ELS) and frequent fire. That is the ultimate success we strive for. Expanding ELS comes from providing land managers with information based on research and experience over the long-haul.

This long-term view provides a depth of knowledge few organizations can match. We also manage lands. As a result, we have an appreciation for the real-world challenges landowners' face, which in turn informs our management research efforts. Collectively, these beliefs help us to build trusted relationships with landowners and managers forging a partnership that helps achieve conservation goals. Similarly, our conservation easement program benefits from a knowledgeable staff that can provide unparalleled stewardship to easement holders.

We also have a sensible funding model that depends on a combination of annual giving, endowment, and grant funding. Sensible because to expand land stewardship we must remain relevant to our constituents — and completing the circle — support grows from people that view our work as relevant to their lives. Our endowment provides critically-important funding to support our efforts, but to fully operate we need to raise annual dollars. Our funding model encourages us to focus on the needs of people — providing useful information that is not available from other organizations. Our history of science to find answers, and help people meet their conservation goals is why people like you have supported us, and we are grateful. In 2018, we were benefactors of an anonymous gift to create the Tall Timbers Trust.

We also saw significant growth in donations, grants and contracts from members and constituents. The increased support allows us to conserve more land. Thank you for your support, and we promise to continue to work on behalf of you and our natural resources!



**Tom L. Rankin**  
Board Chairman



**Bill Palmer, PhD**  
President & CEO

## **TALL TIMBERS RESEARCH, INC. 2018 BOARD OF TRUSTEES**

### **CHAIRMAN**

Mr. Tom L. Rankin

### **VICE-CHAIRMAN**

Mrs. Cornelia G. Corbett

### **SECRETARY**

Mrs. Daphne F. Wood

### **TREASURER**

Dr. George Simmons, DVM

### **TRUSTEES**

Mr. Charles M. Chapin III

Mrs. Rosamond C. Davis

Mr. Kenneth D. Haddad

Mr. O. Mason Hawkins

Mr. Redmond Ingalls

Mr. Robert H. (Rip) Kirby

Mr. John Wesley Langdale III

Dr. Rodman R. Linn, PhD

Dr. Karl Miller, PhD

Mr. David D. Perkins

Mrs. Kate Sullivan Scovil

Mr. Hewitt B. Shaw

Dr. George W. Simmons

Mr. Wilton R. Stephens, Jr. (2019)

Mr. Reggie E. Thackston

Mr. Remy W. Trafelet

Mr. George Watkins

Mrs. Virginia Wetherell

Mr. George W. Willson (deceased)

## **TALL TIMBERS FOUNDATION, INC.**

### **CHAIRMAN**

Mr. C. Martin Wood III

### **TRUSTEES**

Mr. Thomas A. Barron

Mr. O. Mason Hawkins

Mr. Tom L. Rankin

Dr. George W. Simmons

Mr. George C. Watkins

Mr. J. Ben Watkins III

# RESEARCH Where Science Meets Management



## 2018 YEAR IN REVIEW

Tall Timbers Research staff published 32 peer-reviewed science publications and submitted another 29 for review of which 15 additional were accepted. This is tremendous scientific productivity considering our modestly sized staff. Our work is important because it is relevant to conservation issues as it helps shape management practices and programs.

Successful funding of programs signifies the value constituents place on Tall Timbers' research.

In 2018, staff submitted approximately \$11.5 million dollars in research grant applications, and were awarded \$5.1 million in research grants and projects, including "multi-year" projects. Staff also gave over 50 presentations at meetings and conferences.

> More than 75 prescribed fire researchers and managers assembled at Tall Timbers in April 2018 for the annual 5-day Prescribed Fire Science Consortium Burn Event organized by the Wildland Fire Science program.

## WILDLAND FIRE SCIENCE

A founding principle of Tall Timbers is to serve as a convener, a non-threatening, neutral location that convenes experts and encourages collaborations in science and management as it relates to conservation. The Prescribed Fire Science Consortium (PFSC) is a recent example of this principle. The PFSC is an international collaboration headed by our Wildland Fire Scientist Kevin Hiers. The PFSC, begun in 2017, includes managers and scientists from USDA-Forest Service Research Labs, Los Alamos Research Labs, and many other organizations.

The Wildland Fire program and its PFSC collaborators received \$6.5 million in Strategic Environmental Research and Development Pro-

gram funding from the Department of Defense in support of prescribed fire research. Additionally, the program received more than \$250,000 in Joint Venture Agreement funding to work on national fire science projects with the USDA Forest Service, linking projects from the Northern, Southern, and Pacific Northwest Research Stations.

We were proud to add Dr. Eric Rowell in 2018, as part of the Tall Timbers' consortium team. Dr. Rowell brings critical expertise for development of three-dimensional characterizations of vegetation (fuel).



Dr. Eric Rowell uses a terrestrial LiDAR system on a portion of Pebble Hill Plantation in Thor, Georgia. Photo by David Godwin



DAVID GODWIN







LiDAR system to scan  
in Thomas County,

Modelling fuels across landscapes is a necessary step to making next generation fire models operational tools. As part of this process, Hiers and Rowell worked with Dr. Rod Linn at the Los Alamos National Lab, and graduate student Daniel Rosales-Giron to beta test the next generation fire behavior modeling tool **QUIC-Fire**. The QUIC-Fire model is central to the efforts of the consortium partners to produce a management-oriented model that can predict fire behavior and ecological effects.

Demonstrating national impact, Hiers and Rowell hosted two Prescribed Fire Science Consortium “co-production” burn events to highlight how science can help increase the pace and scale of prescribed fire. Tall Timbers (April 2018) and Lubrecht Forest, Montana (May 2018), were each attended by more than 100 researchers and managers. Further highlighting Tall Timbers growth on the national fire stage, Hiers served as co-author of the National Climate Assessment published in November 2018. This quadrennial report is required by Congress, and involved 300 scientists nationwide to compile the current state of knowledge on climate science and impacts to natural ecosystems, society, and infrastructure. This was in addition to 12 peer-reviewed manuscripts published by Wildland Fire Science in 2018.

Fire research and modelling is only effective if tied to training and education. Hiers coordinated a new Joint Venture with the US Army and US Fish and Wildlife Service to support Department of



Intern Gianna Tarquinio and Field Ecologist Allie Snyder conducting the Woodyard Hammock biennial tree census after Hurricane Michael.

Defense Fire Training nationwide. Staff consulted with the US Air Force, Florida Forest Service, and private landowners on fire management challenges following Hurricane Michael.

## FIRE ECOLOGY

The Fire Ecology Program, directed by Dr. Kevin Robertson, seeks knowledge of how to sustain natural ecosystems for the long-term. Research focuses on understanding how plants, soil, and fungi are influenced by fire and other management practices, as well as how they promote natural fire regimes that are key to maintaining healthy ecosystems.

Cinnamon (Morrison) Dixon became the new Fire Ecologist after Dr. Monica Rother accepted a

faculty position at UNC Wilmington. Dixon's focus has been managing a USDA National Institute of Food and Agriculture (NIFA) project quantifying how restoring abandoned farmland to old-field pinelands through frequent prescribed burning increases multiple ecosystem services, including biodiversity, soil carbon sequestration, and improved water yield.

Long-term research is another founding principle of Tall Timbers, and 2018 marked the 40th anniversary of the Woodyard Hammock old-growth beech-magnolia forest biennial census, which was more challenging but informative in the wake of Hurricane Michael. The project is revealing how seedlings on the forest floor influence which

# RESEARCH

tree species become successful when high winds create tree fall gaps in the canopy. On the old growth longleaf Wade Tract, Robertson published an important study that linked unburned patches and death of old trees with locations of longleaf pine regeneration. This study, in collaboration with Beadel Fellow Dr. Bill Patt, and Yale graduate student Charles Faires, utilized long-term tree mapping to understand dynamic natural processes that sustain natural longleaf pine populations.

On a larger scale, the Fire Ecology lab co-published critical papers on season of burn of historic fires using fire scars within tree rings of southern pines, which show that the chemical stability of particulate matter in smoke can be used to distinguish its source between smoldering and flaming combustion, and how prescribed burning dilutes the effects of wildfire to the point of decreasing overall fire during droughts.

## GAME BIRD PROGRAM

Game Bird Program Director, Dr. Theron Terhune, has skillfully implemented expansion of the program while sustaining key scientific efforts. He authored or co-authored four manuscripts in the *Journal of Wildlife Management* on supplemental feeding, predation, and bobwhite behavior in relation to hunting. He was promoted to Associate Scientist after receiving outstanding reviews from three external referees at University of Florida, Oklahoma State University, and Mississippi State University.

The Game Bird Program continues its long-term efforts in the Red Hills and Albany regions, but with impressive and growing collaborations in the Carolinas, Alabama, Mid-Atlantic states and elsewhere — it is truly a regional effort. Critical to that effort is our translocation program. We translocated the 5,000th quail in 2018. Properties from New Jersey to Alabama received translocations affecting more than 75,000 acres to date. Research tracking translocation success will continue to improve this conservation technique. Another indication of the expanding foot print of the Game Bird Program is support received from Parks City Quail in Dallas, Texas, to help support bobwhite chick ecology research. Dr. Terhune's research on bobwhite chicks includes colleagues from Texas, Missouri and across the country. Efforts continue in the Mid-Atlantic states with translocations to two properties in 2018.



In the Albany region, Clay Sisson, Albany Quail Project Director, and Dr. Terhune began two new research projects with graduate students Morgan Morehart (at Auburn University) on effect of fire ant control on ant populations, small mammals, and bobwhites, and Justin Rectenwald (at University of Georgia), who is conducting an analysis of long-term hawk data to determine spacial and temporal variation in raptor numbers and effect on quail survival. The Game Bird Program contracted with Mark Sasser (retired Alabama quail program coordinator) to spearhead efforts on quail restoration in Alabama. Sasser has worked on >10,000 acres of wild quail management projects, including two translocation sites. One of these recipients of translocated birds has now become a donor to the second.

Biologist Paul Grimes was added to the Game Bird Program to head up quail restoration efforts in the Carolinas. In 2018, Paul added 11 new properties to the Carolina Regional Quail Project or ~21,710 new private land acres receive technical guidance. In addition Paul worked extensively with Francis Marion National Forest and Low Country Chapter of Quail Forever; he provided technical guidance for quail focal area delineation, management plans, and partnership.

There were four events held in 2018, the largest was the Carolina Field Day held at Heatherstone Farms with 125 participants! In our effort to expand bobwhite populations to managed lands,



two properties were recipients of translocated bobwhites from the Red Hills region,

Tall Timbers joined a new funding mechanism—the **South Carolina Bobwhite Fundraising Partnership** (SCBFP)—with our partners at the South Carolina Department of Natural Resources. The funds will support bobwhite conservation in South Carolina. Thanks to assistance from several volunteers, the SCBFP raised \$29,320 in its inaugural year. This collaboration bodes well for quail conservation in the region.

## ORNITHOLOGY

Tall Timbers continues valuable management-oriented research on translocation for expanding wildlife populations. The Stoddard Bird Lab, directed by ornithologist Jim Cox, received funding from the National Fish and Wildlife Foundation to expand Red-cockaded Woodpecker populations on private lands in the Red Hills by 10%. Woodpecker conservation specialist Rob Meyer was added to the lab to oversee this effort. This includes inventorying existing woodpecker populations, providing managers with locations of active trees viewable from their phones, and using translocation to expand populations. As part of this effort, a new population of Red-cockaded Woodpeckers on Dixie Plantation has been established. Meyer excavated 40 artificial cavities on Dixie, and in the fall, four woodpecker pairs were captured elsewhere in the Red Hills and released on Dixie, with hopes of expanding woodpeckers into the southeastern corner of the Red Hills region. Neighboring property owners are



Woodpecker biologist, Rob Meyer

supportive and have volunteered their lands for future translocations!

Another important population reintroduction was launched on Jonathan Dickinson State Park in southeast Florida. Brown-headed Nuthatches were eliminated from the area in the mid-1940s, before the park was established. Forest conditions have improved over the past 70 years, but isolation brought on by urbanization has made the return of the nuthatch unlikely without assistance. The Stoddard Bird Lab moved 5 juvenile pairs to the park in early September 2018, and had an 80% retention



In late 2018, staff with the Stoddard Bird Lab completed the first phase of work to establish a new population of Red-cockaded Woodpeckers on Dixie Plantation. With help from Georgia DNR biologists Joe Burnam, Zach Henshaw, and Phil Spivey, seven juvenile male and female woodpeckers were captured on properties in the Red Hills region, transported to Dixie, and released the following morning.

rate by year's end. A big goal of this effort is to develop inexpensive methods for other nuthatch reintroduction efforts planned for Missouri and elsewhere.

Over a dozen Tall Timbers field trips were provided to university classes and local civic and conservation groups. Tall Timbers also hosted a special 3-day visit from Orange County Audubon (Orlando) in early December, and another special visit by members of the Cornell Lab of Ornithol-

# RESEARCH

ogy. Audubon groups from throughout Florida and Georgia increasingly visit Tall Timbers to learn more about fire ecology and the management of southern pine forests.

The Stoddard Bird Lab also submitted 2 grant applications totaling more than \$1.2 million, published 3 scientific articles, gave 18 presentations to land management professionals and civic and conservation groups, assisted in a disease workshop for the imperiled Florida Grasshopper Sparrow, completed an assessment of Bachman's Sparrow population monitoring on public lands in Florida, and worked with the National Fish and Wildlife Foundation in developing conservation targets for Bachman's Sparrows in projects they support.

## GEOSPATIAL CENTER

2018 was a pivotal year for the Tall Timbers Geospatial Center. Dixie Davis was hired as the new Geospatial Database Manager tasked with creating a new system of web mapping applications, mobile apps, and reporting dashboards. Early successes include creation of Private Lands Burn Team mobile apps and various other automated data collection apps for both research and conservation staff. Work continued on mapping burned areas in Florida for a large Florida Fish & Wildlife Conservation contract. Given that 70% of Florida is in private ownership, this product will be the first spatial footprint of fire for those private lands covering over 10 years of fire history. Working closely with Neil Fleckenstein and the Land Conservancy staff,

major progress was made on the land prioritization model with the incorporation of fire metrics, such as time last burned in the Longleaf Legacy Landscape. On the Information Technology front, 2018 saw major upgrades to our virtual servers, storage capacity and data security efforts. The Geospatial center continues to expand efforts to support the geospatial and IT needs of both research and conservation activities at Tall Timbers.

## BEADEL FELLOWS

We proudly added Dr. J. Richard Carter as a Beadel Fellow. Dr. Carter is working with Drs. Kevin Robertson and Bill Platt, along with expert biologist Wilson Baker, to complete a floristic inventory of the Wade Tract Preserve. Dr. Platt continued his study of fungal communities in pine savannahs, as well as studies of the Wade Tract's flora, tree populations and history of fire. Drs. Jeff Glitzenstein and Donna Streng worked on a manuscript analyzing vegetation of the federally endangered American chaffseed (*Schwalbea americana*), sample plots in relation to overall longleaf, and Dr. Gil Nelson continued to work with our fire ecology program on plant identification and assisted in completing the **Wade Tract Florula** (the flora of a small single environment).

## FIRE OUTREACH

Prescribed Fire training specialist, Greg Seamon continued training on prescribed fire to folks all over the world through the Prescribed Fire Training Center. Over 175 burns for approximately 70,000



In summer 2018, Tall Timbers' Fire Training Specialist Greg Seamon traveled to Campeche, Mexico as part of the USFS International Forestry Program's work with the Mexican government on prescribed fire training. While in Campeche, Greg worked with USFS personnel, contractors and the Director of the Prescribed Fire Training Center, Robert Trincado (USFWS) to conduct a training focused on burn plan goals and objectives setting and monitoring for meeting those goals and objectives. Thirty wildland firefighters from across the country, representing CONAFOR (National Forestry Commission of Mexico), CONANP (National Commission for Natural Protected Areas), and ProNatura (Mexico's largest environmental organization) participated.

acres were conducted with students from across the US and participants from Australia and Poland.

Southern Fire Exchange Administrative Director David Godwin, who is stationed at Tall Timbers, conducted and/or participated in over 20 professional presentations/discussions, and produced over 25 publications, videos and fact sheets on fire science and research. In the wake of the East Point wildfire, he participated in a discussion on WFSU Perspectives radio program, along with Tall Timbers staff, about prescribed fire, fire ecology and fire science.



# LONGLEAF LEGACY LANDSCAPE

PRIVATE LANDS BURN TEAMS



Areas of Georgia, Alabama, and Florida are currently managed with three active burn teams (Chattahoochee, Gulf Coastal Plain Ecosystem Partnership, and Apalachicola Regional Stewardship Alliance). This includes roughly 10 million acres of private lands, which are the highest concentration of lands in the eastern US that need frequent prescribed fire. This **Longleaf Legacy Landscape** is estimated to burn nearly 1 million acres, the vast majority on private lands. Private landowners in this region have a history of burning for many objectives, including quail management, timber production, agriculture, grazing, and conservation. This fire culture is critical for successful outreach that attempts to grow fire capacity across diverse ownerships. Photos by Eric Staller





# LAND CONSERVANCY



The Land Conservancy achieved remarkable success in 2018, and is off to a good start in 2019. Tall Timbers closed on eight conservation easement projects in the greater Red Hills. We are grateful for these donations made possible by Richard and Ann Vann (Docwood Farm), Debra and Wade Patterson (Patterson Tract), Daphne and Marty Wood (Live Oak Plantation, Phase V and Searcy Place), and Maury Shields (Searcy Place).

Two prominent 2018 success stories were made possible with the inaugural use of the Red Hills Land Conservation Opportunity Fund: the Ware Forest Acquisition Project and the Old Growth Woods donated conservation easements.

## WARE FOREST ACQUISITION PROJECT

In February 2018, Tall Timbers completed the ownership transfer of 160 acres of wetlands along the Aucilla River in Jefferson County to the Suwannee River Water Management District (SRWMD). The southern portion of the tract contains extensive

stands of high quality mature cypress. The parcel is adjacent to Sneads Smokehouse Lake, a public recreation area owned and managed by SRWMD.

The 160-acre cypress tract was under contract to be extensively logged. However, given the parcel's proximity to existing public lands and outstanding quality, there was much interest in having it protected. David Ward, co-founder of the Aucilla/Wacissa River Group, spearheaded the effort to find a conservation outcome.

In 2017, Tom Weller, a Jefferson County landowner, toured the property with homeowners from the Ashville Area Property Owners Association (AAPOA) and was struck by the quality of the mature cypress forest. The AAPOA held off the logging threat, but time was running out. Mr. Weller played a crucial role in the transaction by contributing significant funds for the purchase and negotiating the initial sale with Ware Forest, Inc.

Tall Timbers used its new Red Hills Land Conservation Opportunity Fund to help Mr. Weller and SRWMD to close the deal. Tall Timbers created the Opportunity Fund in 2016 to strategically invest in high quality land conservation projects in the Red Hills region. Tall Timbers also received a grant from the Felburn Foundation, a non-profit organization, which supports land conservation projects that protect water resources, to complete the funding puzzle.

Mr. Ward reflected on the collaborative effort to save this vital parcel: "The commitment by Jefferson County's Tom Weller, the District, the

AAPOA, the Aucilla/Wacissa River Group, Tall Timbers, and the Felburn Foundation represents conservation at its finest—diverse stakeholders working together to protect our water resources for this generation and those to come."

## OLD GROWTH WOODS

Located in the Ochlockonee River watershed and historic Meridian Road corridor of Grady County, Georgia, the strategic Old Growth Woods properties were a high priority conservation candidate for Tall Timbers in 2018. Historically, the 1,100-acre Red Hills land was part of Susina Plantation and has been owned by the same family since 1891. Its centerpiece is the 75-acre Mitchell Pond, which attracts abundant waterfowl and migratory birds. The uplands include outstanding longleaf pine forests with intact native groundcover that supports a suite of wildlife and plants associated with pine savannas in the Red Hills region and Southern Coastal Plain.

According to Land Conservancy Director Kevin McGorty, "what truly makes the property remarkable is the loving care of the land by the White family." Rosalie Mason White stewarded this land through the 20th century with her sense of humor and outlook on life well-chronicled in her daughter June Bailey White's classic book *Mama Makes Up Her Mind*. June's late brother Robb was also a noted writer, and a master designer and builder of lightweight wooden boats handcrafted from lumber on Old Growth Woods.



L-R: Bill Palmer, Tom Weller, Hugh Thomas (SRWMD), and David Ward (Aucilla/Wacissa River Group) at the Ware Forest tract closing. Photo courtesy of the Suwannee River Water Management District.





Mitchell Pond

June still calls Old Growth Woods home, and tends to the woods and gardens with other family members. The property is also owned by sister Barbara Mason White and sister-in-law Jane Milligan White, who share a deep affinity for this historic Red Hills landscape.

The White family wished to place each of the four Old Growth Woods ownership parcels under conservation easement with Tall Timbers. To assist with the due diligence costs of this undertaking (surveys, appraisals, etc.), Tall Timbers used its Red Hills Land Conservation Opportunity Fund with matching support from The Conservation Fund. These donated conservation easements now provide connected conservation land from Highway 319 to the Ochlockonee River.

This use of the Red Hills Land Conservation Opportunity Fund illustrates its function — it provides Tall Timbers opportunities to protect vital corridors and close the gap between conserved and unconserved lands in the core Red Hills region.

## YEAR IN REVIEW

- » Closed on eight donated conservation easements in 2018. Now, **149,648 acres** are permanently protected by Tall Timbers via donated easements or fee properties.
- » Submitted and secured Florida Forever listing of a purchase conservation easement for **17,000 acres** in Leon and Jefferson Counties.
- » Worked with other conservation organizations for successful passage of the Georgia Outdoor Stewardship Amendment. The amendment dedicates **75% of tax revenue** from outdoor recreation equipment for acquisition and management of critical conservation lands.
- » Published The Economic Impact of the Red Hill Region's Quail Hunting Lands of North Florida and Southwest Georgia. The study revealed that the overall economic impact of quail hunting in the Red Hills region in 2017 was **\$194 million**, supporting **1,725 jobs**.
- » Applied for and received **\$500,000** matching Final Phase Dixie House Restoration and Rehabilitation grant from the State of Florida.
- » Hosted nearly **1,000 attendees** at the second Red Hills Fire Festival who learned about prescribed fire through demonstrations with partnership organizations.
- » Established a new schoolyard longleaf plot at Thomas County Central High School.
- » Received **\$25,000** Georgia Department of Natural Resources grant and completed herpetofauna regional survey.
- » Assessed impacts to Tall Timbers conservation easement properties that sustained damage from Hurricane Michael and discussed options for recovery with landowners and managers.



Students planting Thomas County Central High School Longleaf Learning Landscape plot. Photo by Brian Wiebler.



# 2018 SUPPORT

## TALL TIMBERS SOCIETY

Tall Timbers Society members are friends who make a significant and sustaining impact on our ability to accomplish our mission through their generous cumulative annual giving, both monetary and in-kind.

### KATE IRELAND SOCIETY

\$100,000+

Anonymous

Mr. Ogden Phipps II

The Orton Foundation

The William Stamps Farish Fund

Mr. and Mrs. C. Martin Wood III

### HENRY BEADEL SOCIETY

\$50,000-\$99,999

Mr. and Mrs. Richard A. Corbett

Four Oaks Plantation

Mr. and Mrs. Robert Nunnally

The Perkins Charitable Foundation

Turner Foundation

### ED KOMAREK SOCIETY

\$25,000-\$49,999

Mr. Gregory Callimanopoulos

Firman Fund

Mr. and Mrs. David F. Grohne

Mr. and Mrs. Raymond J. Harbert

Mr. O. Mason Hawkins

Mr. J. Wesley Langdale III

Mr. Rick B. Leverich and Ms. Sheree Lucero

Mr. and Mrs. Jeffrey M. Nielsen

Mr. and Mrs. Tom L. Rankin

Mr. and Mrs. Enrique F. Senior

Southern Pines Plantations

Mr. and Mrs. Witt R. Stephens Jr.

Mr. and Mrs. Kevin Stump

Mr. and Mrs. Russell Turner

Mr. and Mrs. George C. Watkins

Williams Family Foundation of Georgia

### HERBERT STODDARD SOCIETY

\$10,000-\$24,999

Anonymous

The Archibald Foundation

Mr. and Mrs. C. DuBose Ausley

Mr. Robert G. Bearden Jr.

Ms. Wendy H. Bicknell

Mr. Richard Burke

Mr. James E. Butler Jr.

Mr. and Mrs. Charles M. Chapin III

Mr. and Mrs. Russell P. Chubb

Continental Field Trial Club

Mr. and Mrs. William F. D'Alonzo

Mr. Jim Dahl

Mr. and Mrs. Joseph H. Davenport III

Visiting Angels of Tallahassee

Doe Run Plantation

Elisha-Bolton Foundation

Mr. and Mrs. Lawrence Flinn Jr.

Mr. Frank D. Foley III

Foundation for the Carolinas, Tom and Kathy Ewing Fund

Mr. Grayson Hall

J. C. Kennedy Foundation

John and Susan Mullin Fund

Mr. John D. Johns

The Kate Ireland Foundation

Mr. and Mrs. Robert H. Kirby

The Margie and Sam Gray Family Fund

Mr. Gene W. Milner Jr.

Mr. and Mrs. Steve Olsen

The Parker Poe Charitable Trust

Mr. and Mrs. Rodney Pilot

Mr. David D. Perkins and Mrs. Nancy Mackinnon

Peter R. and Cynthia K. Kellogg Foundation

Mr. and Mrs. Jeffrey S. Phipps

R. K. Mellon Family Foundation

Mr. Randy Ringhaver

Samuel E. Upchurch Jr. Charitable Foundation

Mr. and Mrs. Michael D. Shea

Dr. and Mrs. George W. Simmons

Southwest Georgia Quail Forever

Mr. and Mrs. Warren Stephens

The Thomas M. Kirbo and Irene B. Kirbo Charitable Foundation

Mr. Remy Trafelet

Mr. Robert M. Trulock

Mr. Richard Vann

Wade Research Foundation

Mr. Ben Wall

Mr. Lee Walters

Mr. and Mrs. Virgil R. Williams

William Howard Flowers Jr. Foundation

L-R: David DiBenedetto (Sr. VP & Editor in Chief for Garden & Gun magazine), Eddie Nickens (G&G contributing writer) and Bill Palmer (Tall Timbers President/CEO). Nickens and Palmer shared their knowledge on quail, land management and prescribed fire with over 200 attendees at the the Southeastern Wildlife Exposition in Charleston, SC, in February 2018. The Cocktails & Conservation event hosted by Garden & Gun.





## ANNUAL FUND CONTRIBUTORS

### LONGLEAF: \$25,000-\$49,999

Mr. and Mrs. Richard A. Corbett  
The Perkins Charitable Foundation  
**WIREGRASS: \$10,000-\$24,999**  
Anonymous  
Ms. Wendy H. Bicknell  
Mr. and Mrs. Russell P. Chubb

## COCKTAILS & CONSERVATION Hosted By Garden & Gun



Mr. and Mrs. Raymond J. Harbert  
Mr. O. Mason Hawkins  
Four Oaks Plantation  
Mr. and Mrs. Robert Nunnally  
Peter R. and Cynthia K. Kellogg  
Foundation  
Samuel E. Upchurch Jr. Charitable  
Foundation  
Mr. and Mrs. Kevin Stump  
The Thomas M. Kirbo and Irene B.  
Kirbo Charitable Foundation  
Mr. and Mrs. George C. Watkins

### BENEFACTOR: \$5,000-\$9,999

Mr. and Mrs. C. DuBose Ausley  
Mr. and Mrs. James K. Dobbs III  
The Kate Ireland Foundation  
Samuel B. Kellett Sr. Foundation  
The Melville Foundation  
Mr. Thomas Patrick  
Mr. and Mrs. Tom L. Rankin  
Mr. and Mrs. Hewitt Shaw  
The Perkins Charitable Foundation,  
Mr. David D. Perkins and Mrs.  
Nancy Mackinnon  
The Perkins Charitable Foundation,  
Mr. and Mrs. Samuel Scovil and Mr.  
and Mrs. Timothy P. Sullivan

### PATRON: \$2,500-\$4,999

Mrs. Kathy R. Archibald  
Mr. John D. Baker II  
Mr. and Mrs. Charles M. Chapin III  
Mr. and Mrs. J. Palmer Clarkson  
Mr. and Mrs. Edward A. Davis Jr.  
Elizabeth Ring Mather & William  
Gwinn Mather Fund, Mr. James D.  
Ireland IV  
Mr. and Mrs. James G. Fitzgerald  
Mr. Chuck Hall and Ms. Fran Smith

Mr. Grayson Hall  
Mr. and Mrs. Redmond S. Ingalls  
Mr. John D. Johns  
The Katherine and Samuel Scovil  
Charitable Fund  
Mr. Kenneth Allen Makowski  
Mr. Gene W. Milner Jr.  
Mr. and Mrs. Gordon Mooney  
Mr. and Mrs. Steve Olsen  
Mr. David D. Perkins and Mrs. Nancy  
Mackinnon  
Mr. and Mrs. Rodney Pilot  
The Robert L. Ireland Jr. Fund  
Dr. and Mrs. Charles R. Sanders  
The Theo B. Bean Foundation  
Mr. and Mrs. Thomas V. H. Vail  
Mr. and Mrs. Mark Wallace  
Mr. and Mrs. J. Ben Watkins III  
Ms. Lori Weldon

### SPONSOR: \$1,000-\$2,499

Mr. and Mrs. John G. Alston Sr.  
Mr. and Mrs. Charles E. Commander III  
Mr. Charles R. Crisp  
Mr. and Mrs. Guy De La Valdene  
Mr. Thomas R. Devlin  
Doe Run Plantation  
Ellery and Robin Sedgwick Fund,  
Dr. and Mrs. Ellery Sedgwick  
Mr. Howell L. Ferguson and Dr. Sharon  
Maxwell-Ferguson  
Mr. and Mrs. James L. Ferman Jr.  
Garden & Gun Magazine  
Mr. James S. Garrett  
The Gerry-Corbett Foundation,  
Mr. William F. Gerry  
Mr. Trey Gooe  
Mr. Samuel S. Gottwald

Mr. and Mrs. Kenneth D. Haddad  
Mr. Edmund H. Hardy  
Mr. Joseph Guy Helmsing  
Dr. and Mrs. Louis Hill Jr.  
Mr. and Mrs. G. Watts Humphrey Jr.  
Mr. William J. Hurst  
Mr. and Mrs. Wheat Kirbo  
Mr. and Mrs. Robert H. Kirby  
Ms. Connie S. Kummer  
Mr. and Mrs. John B. Long II  
Dr. and Mrs. Douglas C. McPherson  
The Pegasus Foundation, Mr. and Mrs.  
Melville H. Ireland Jr.  
Mr. Everall D. Perkins  
Mr. and Mrs. C. Mark Pirrung  
Mr. and Mrs. Clifford M. Preston  
Sedgwick Family Fund, Mrs. Irene S.  
Briedis  
Mr. and Mrs. Wallace Edward Sholar Jr.  
Dr. and Mrs. George W. Simmons  
Mr. and Mrs. Taylor W. Smith  
Mr. J. Vereen Smith  
Mr. and Mrs. Witt R. Stephens Jr.  
Mrs. Sallie P. Sullivan  
Mr. and Mrs. Charles M. Tarver  
Mr. Michael Durham Terry  
Dr. and Mrs. Walter R. Tschinkel  
Mr. Richard Vann  
Mr. and Mrs. C. Martin Wood III  
Mr. Mark A. Worthey  
**SUSTAINING: \$500-\$999**  
Dr. and Mrs. J. Galt Allee  
Mr. Lamar Q. Ball III  
Mr. David Black  
Mr. and Mrs. William G. Bostick Jr.  
Mr. Sam Bratton

Mr. Franklin L. Burke  
Mr. and Mrs. Chas H. Cannon  
Mr. and Mrs. John M. Carlton Jr.  
Mr. Charlton H. Chatfield  
Community Foundation of South  
Georgia, Beadles Charitable Fund  
Mr. and Mrs. Brian Crow  
Dr. John B. Davis Jr.  
Ellery and Robin Sedgwick Fund,  
Mr. and Mrs. Ellery W. Sedgwick  
Mr. and Mrs. Robert R. Feagin III  
Mr. and Mrs. C. David Fonvielle  
Dr. and Mrs. Jerry Ford  
Mr. Elbridge T. Gerry Jr.  
Ms. Bettie Jane Grant  
Mr. Nathan V. Hendricks III  
Mr. and Mrs. H. Don Horne  
Mr. and Mrs. Rhett Johnson  
Mr. and Mrs. Harry T. Jones  
Dr. Kristin E. Kentopp  
Mr. John E. Ladson III  
Mr. and Mrs. Rob Langford  
Mr. and Mrs. Bernard Lanigan  
Love Family Foundation  
Mr. and Mrs. Roy McCraw  
MLM Private Forester  
Mr. John W. Mettler III  
Mr. Leigh H. Perkins Jr.  
Mr. Hugh S. Plumb  
Mr. J. Mathieu Plumb  
The Proctor Dealerships  
Red Hills Spaniel Club  
Dr. and Mrs. John B. Reynolds  
Mr. Sonny Roberts  
Mr. Eli R. Sharp  
Mr. and Mrs. Michael Sheridan



# 2018 SUPPORT

Dr. Orson and Eleanor Smith  
The 1772 Foundation, Mr. B. Danforth Ely  
Tim and Wendy Sullivan Charitable Fund  
Mr. Richard B. Wagner  
Mr. and Mrs. Ebe Walter  
Mr. Lee Walters  
Mr. and Mrs. Warren Bicknell III  
Mr. Miles B. Watkins  
Dr. and Mrs. Philip C. Watt  
Mrs. Virginia Wetherell  
William Powell and Caren McKenzie  
Jones Charitable Fund  
Mr. and Mrs. Blair Williams  
**SUPPORTING: \$250-\$499**  
Mr. Jeff Alexander  
Mr. Guy Anglin and Ms. Jan Blue  
Mr. Bernard C. Baldwin III  
Mr. and Mrs. R. C. Balfour III

Mr. C. Duncan Beard  
Mr. and Mrs. Sid Bigham  
Mr. Joseph S. Brannen  
Dr. and Mrs. Clifford S. Bristol  
Mrs. Judith O. Burgert  
Mr. and Mrs. James C. Crawford III  
Mr. Douglas M. Croley  
Mr. Elliott Davenport Jr.  
Mr. and Mrs. Walker W. Davis  
Mr. Robert H. Demere Jr.  
Duck Haven Gun Club  
Edwards Olson Architecture  
Mr. Neil Fleckenstein and Mrs. Terri Williams  
Mr. J. Todd Ford  
Mr. and Mrs. Benson Green  
Mr. George F. Grimsley  
Mr. and Mrs. Harper Hanway  
Mr. and Mrs. Michael S. Hartman

Mr. and Mrs. John T. Hiers  
Mr. and Mrs. Sloan Howard  
KD Charitable Fund  
Mr. Charles P. Lykes Jr.  
Mr. Peter T. MacGaffin  
Mrs. Peter Manigault  
Mr. Charles G. McDaniel  
Mr. and Mrs. Kevin McGorty  
Mr. and Mrs. Richard G. Mooney III  
Dr. William Palmer  
The Pegasus Foundation, Mr. Peter M. Ireland  
The Pegasus Foundation, Mr. William L. Ireland  
Mr. and Mrs. Andrew Peipers  
Mr. and Mrs. Seth L. Pierrepont  
Mr. and Mrs. Timothy B. Pirrung  
Ms. Melissa Proctor  
Mr. Franklin Reinstine Jr.  
Mr. James M. Robinson IV  
Savannah Community Foundation,  
The Critz Family Fund  
Mr. and Mrs. David C. Scott  
Mr. John Sineath  
Mr. and Mrs. Chuck Smallwood  
Mr. and Mrs. Reggie Thackston  
Dr. William L. Tietjen  
Mr. Sam B. Waddill  
Mrs. Patricia L. Warren  
Mr. William R. Watson



*Hearth & Soul, a retail home store in Tallahassee, gave Tall Timbers the opportunity to connect with their "guests" and showcase our mission at their Meet the Makers event in February 2018. Tall Timbers was featured as Hearth & Soul's Non-Profit Partner that month. Photo courtesy of Hearth & Soul.*

Dr. Jerry Williams  
Mr. and Mrs. Jerry Williamson  
Mr. Ben Willis  
Mr. John S. Wise  
Mr. and Mrs. Shane Wellendorf  
Mr. and Mrs. Geoffrey P. Young  
**CONTRIBUTING: \$125-\$249**  
Mr. and Dr. Ken Allman  
Mr. and Mrs. Bill Anderson  
Mr. and Mrs. Robert W. Balfour  
Mr. and Mrs. Stan Barnes  
Mr. and Mrs. Douglas Beach  
Mr. and Mrs. Joe Beverly

Dr. and Mrs. John A. Blackmon  
Mr. George Brannen  
Dr. Roland Bridges  
Mr. Bobby B. Brown  
Mr. Dana C. Bryan and Ms. Gwendolyn B. Waldorf  
Mr. Robert F. Burgin III  
Mr. and Mrs. Fred Calder  
Mr. and Mrs. Bob Carroll  
Dr. J. H. Carter III  
Charles Rozier & Associates  
Mr. Randall Chase Jr.  
Mr. Thomas Clark  
Mr. C. Caleb Connor  
Mr. Henry L. Crisp  
Dr. and Mrs. J. Daniel Davis  
Mr. and Mrs. Endicott P. Davison Jr.  
Ms. Callie DeHaven  
Mr. and Mrs. Marc Doyle



*<Tall Timbers hosted award-winning children's book illustrator Jerry Pickney in 2018. Mr. Pickney won the Caldecott Medal and five Caldecott Honors, among others. He was in the Red Hills for an event at the Thomasville, Georgia library and wanted to see the Jones Family Tenant Farm at Tall Timbers. We arranged for Mr. Pickney and his wife, Gloria, to meet Eluster Richardson, the artist of the interpretative exhibits at the tenant farm. Also, joining us was Eluster's wife, Lessie, who has assisted with many events at the farm. Juanita Whiddon, curator of the exhibits, led the tour and was assisted with the audio portion of the exhibits by volunteer Curtis Johnson. Pictured L-R top row: Juanita Whiddon, Curtis Richardson, Abby Watt; L-R bottom row: Eluster and Lessie Richardson and Jerry and Gloria Pickney. Photo by Rose Rodriguez*



Mr. and Mrs. Edward Epp  
 Mr. and Mrs. Pat Farrell  
 Mr. Monty C. Ferrell  
 Ms. Susan M. Fitzgerald  
 Mr. Richard Gilchrist  
 Mr. and Mrs. Lane Green  
 Mr. and Mrs. Ralph G. Greene  
 Mr. Michael A. Grimsley  
 Mr. Greg Hagar  
 Dr. Robert L. Harbin  
 Mr. David H. Hardin  
 Mr. Peter A. Hays  
 Mrs. Mart P. Hill  
 Reverend David G. Hortin  
 Mr. and Mrs. Bernie Hyde  
 Mr. Clifford W. Johnson  
 Mr. and Mrs. Chad Jones  
 Mr. and Mrs. Logan M. Lewis  
 Mr. and Mrs. Phillip L. Martin  
 Mr. James Martin  
 Mr. William A. Martin  
 Mr. and Mrs. Eric McCollum  
 Mr. and Mrs. Ted McGraw  
 Mr. Duncan McNeel  
 Mr. Steven McNeel  
 Mr. and Mrs. David J. Middleton  
 Dr. Arthur V. Moore D.V.M.  
 Ms. Julie H. Moore  
 Mr. and Mrs. Sandy Morehouse  
 Mr. and Mrs. Jack R. Pierce  
 Mr. Will Primos  
 Mr. Francis P. Rentz  
 Mrs. Crystal D. Rice  
 Mr. David Rivenbark  
 Ms. Rosalie Rodriguez  
 Mr. A. Keith Rowell P.S.M.

Mr. Grant Rudolph  
 Dr. and Mrs. John Sanders  
 Mr. James L. Schortemeyer  
 Dr. and Mrs. Terry W. Sherraden  
 Mr. George Skipper  
 Mr. and Mrs. Robert J. Sniffen  
 Mr. Theodore F. Thomas Jr.  
 Thomas Farms  
 Mr. Lewis C. Tyus Jr.  
 Ms. Virginia A. Vail  
 Mr. Jody Walthall and Mrs. Donna Legare  
 Mr. Robert N. Walthall  
 Mr. David A. Whitcomb  
 Mr. and Mrs. Brent Widener  
 Dr. and Mrs. John L. Williams  
 Mr. Pat Woodward



## SCENES FROM THE 2018 KEVIN'S GAME FAIR

Tall Timbers was a beneficiary of the proceeds. Photos by Rose Rodriguez





# 2018 SUPPORT

## GRANTS, JOINT VENTURES, AND COST SHARE AGREEMENTS

### CAPITAL CITY BANK GROUP FOUNDATION

Information Resources—eNews design and marketing

### GEORGIA DEPT OF NATURAL RESOURCES

Herp Status

### GEORGIA POWER

Land Conservancy

### GG WADE CHARITABLE TRUST

Dendrochronology

### FISH & WILDLIFE FOUNDATION OF FLORIDA INC

White Oak/Grasshopper Sparrow

### NASA/FLORIDA STATE UNIV

Air quality & climate impacts of biomass burning in the SE U.S.

### NATIONAL INSTITUTE OF AEROSPACE

Firechem: Fuel from Below, Linking Fire

### NATIONAL FISH AND WILDLIFE FOUNDATION

Expanding Red-cockaded Woodpeckers in Georgia and Florida

### PARK CITIES QUAIL

Roost Site Selection & Survival of Northern Bobwhite

### STATE OF FLORIDA

FWC Developing Spatial Database of Prescribed Fire

FWC Apalachicola NF Translocation

FWC Coop Wild Turkey Research

Upland Ecosystem Restoration Program

SWG – Spatial Database, Prescribed Fire in Florida

### THE NATURE CONSERVANCY

CFL Fire Prioritization Modeling

### UNIVERSITY OF GEORGIA

Nitrogen cycling in long leaf pine forests at Eglin AFB

### UNIVERSITY OF KANSAS

Fire Ecology

### U.S. DEPARTMENT OF AGRICULTURE

Understanding the Fluid Dynamics of Fire Behavior and Effects

Prescribed Fire Science Collaborative

Partnering for the Advancement of Rx Fire Science across the Atlantic Coastal Plain

Working Lands for Wildlife—Gopher Tortoise

Longleaf Pine Initiative

Additional Modeling & a Synthesis of Ecosystem Process Model Performance Comparisons

Prescribed Burning: SE Pine Forest

Collaborative Forest Landscape Restoration Project

Southern Fire Exchange—Putting Fire Science on the Ground

Provision of ecosystem services through pine savanna restoration

Collaborative Prescribed Fire Training

### U.S. DEPARTMENT OF INTERIOR

Private Lands Prescribed Fire Training

### U.S. FISH AND WILDLIFE SERVICE

Restoration of Fire-dependent habitats in St. Sebastian River Preserve State Park

### WADE RESEARCH FOUNDATION

Reptile & Amphibian Work on Greenwood

Tree & Lidar Measures for Wade Tract

### WESTERVELT ECOLOGICAL SERVICES

Pensacola Bay

St. Marks Mitigation

Strategic Rx Burn on Private Lands

Mr. Frank D. Foley III

Mr. J. Todd Ford

Franklin Family Farm

George P. Swift Jr. Family Foundation

Mr. Mike Goodrich

Mr. and Mrs. Raymond J. Harbert

Mr. Steven D. Johnson

Jones Family Fund

Mr. and Mrs. Keith Kelly

The Margie and Sam Gray Family Fund

Mr. Duncan McNeel

Mr. Steven McNeel

Nilo Plantation

Nonami Oglethorpe

Mr. and Mrs. Robert Nunnally

Quick Trigger

R. K. Mellon Family Foundation

Senah Plantation

Southwest Georgia Quail Forever

Mr. and Mrs. Witt R. Stephens Jr.

Mr. and Mrs. Kevin Stump

T. R. Hall Land & Cattle Co.

Mr. Remy Trafelet

Mr. Lewis C. Tyus Jr.

Mr. and Mrs. Thomas V. H. Vail

Mr. Lee Walters

Mrs. Patricia L. Warren

William Howard Flowers Jr. Foundation

Mr. and Mrs. Virgil R. Williams

## GAME BIRD PROGRAMS

### ALBANY QUAIL

Mr. Jeff Alexander

Mr. Robert G. Bearden Jr.

Mr. R. William Becker

Mr. Richard Burke

Mr. James E. Butler Jr.

CEC Georgia Properties

Ellen & Richard Cuda Family Foundation Fund

Mr. and Mrs. Joseph H. Davenport III

Mr. and Mrs. Joseph H. Davenport IV

Doe Run Plantation

Mr. Robert S. Doochin

Mr. and Mrs. Lawrence Flinn Jr.



< Sammie McGee, with the Florida Department of Environmental Protection stands with a bird box at St. Sebastian River Preserve State Park. The Stoddard Bird Lab distributed these new "homes" in south Florida in 2018, in prep for their exciting and novel attempt to reintroduce the Brown-headed Nuthatch to Jonathan Dickinson State Park, which disappeared from the park in the 1950s. Thirty-five of the simple-to-make structures were placed on St. Sebastian River Preserve State Park, where there is a healthy nuthatch population. The boxes nearly double nesting success for this declining species and made juvenile nuthatches available for translocation later in the year, just 70 miles south to Jonathan Dickinson State Park.





2018 Carolina Field Day attendees listen to a presentation under the tent at Heatherstone Farm, where the event was held on a wet day in October. Pictured in the foreground at far left is David Gantt, Heatherstone Farm manager and third from left is owner Tom Ewing. Photo by Rose Rodriguez

#### CAROLINA REGIONAL QUAIL PROJECT

Anonymous  
 Anonymous  
 Mr. William Blake Amick  
 Mr. Paul C. Aughtry III  
 Mr. Sam Bratton  
 Dr. and Mrs. William Cain Jr.  
 Mr. Gregory Callimanopulos  
 Cana Plantation  
 Mr. Henry Clay  
 Mr. and Mrs. Stephen M. Creech  
 Mr. David D. Douglas  
 Mr. Kirkman Finlay  
 Foundation for the Carolinas, Tom and Kathy Ewing Fund  
 Dr. Bryan Green  
 Mr. Edmund H. Hardy  
 Mr. Rick Hemingway  
 J. C. Kennedy Foundation  
 Mr. Charles G. Lane  
 Mr. and Mrs. Phillip L. Martin  
 Mr. H. Gordon Maxwell  
 Paschal Family Charitable Fund  
 Mr. William H. Prestage  
 Prestage Farms  
 Queensborough National Bank & Trust Company

Robin Hollow  
 Mr. Mark Salley  
 Southern Pines Plantations  
 Mr. David Sprunt  
 Mr. and Mrs. Lewis M. Stewart Jr.  
 Mr. and Mrs. Reggie Thackston  
 Mr. Ben Wall

#### 2018 CAROLINA FIELD DAY Presented by Heatherstone Farms Event Sponsors

AgSouth Farm Credit  
 American Forest Management  
 ArborOne Farm Credit  
 Boykin Tree Farm  
 CDKA  
 Elgin Feed & Garden Center  
 Fralo Farms Wildlife Catering  
 McCrary  
 Milliken Forestry  
 Mr. Richard Rankin  
 Springdale Land & Game Management  
 Wannamaker Wildlife

#### 2018 SOUTH CAROLINA BOBWHITE FUNDING PARTNERSHIP EVENT & AUCTION SPONSORS

AgSouth Farm Credit

American Forest Management  
 Mr. Sam Bratton  
 Bruner Powell  
 CF Evans Construction  
 Mr. David E. Dukes  
 Farm Boys  
 Hampton Wildlife Fund, Mr. Jim Goller  
 Hampton Wildlife Fund, Mr. James E. Hudson  
 Mr. Edmund H. Hardy  
 Mr. Mike Hutchins  
 James C. Crawford III Charitable Fund  
 Kirk Commercial Construction  
 MTB Properties  
 Palmetto Natural Resources Management  
 Riverside Farms  
 Mr. and Mrs. M. Todd Smith  
 SPEC Painters  
 Springdale Land & Game Management  
 T.A.C.K. Timber  
 Turkey Ridge

#### MID-ATLANTIC QUAIL PROJECT

Mr. and Mrs. William F. D'Alonzo  
 Mr. and Mrs. Jeffrey M. Nielsen  
 Henry F. Sears Foundation

#### PAMELA H. FIRMAN RED HILLS QUAIL MANAGEMENT RESEARCH

Anonymous  
 Dr. and Mrs. J. Galt Allee  
 Mr. and Mrs. C. DuBose Ausley  
 Mr. Bernard C. Baldwin III  
 Mr. and Mrs. R. C. Balfour III  
 Ms. Wendy H. Bicknell  
 Dr. and Mrs. Clifford S. Bristol  
 Mrs. Judith O. Burgert  
 Mr. L. Hardwick Caldwell  
 Mr. Steve H. Cassis  
 Mr. and Mrs. Charles M. Chapin III  
 Mr. and Mrs. J. Palmer Clarkson  
 Mr. and Mrs. Richard A. Corbett  
 Mr. Jim Dahl  
 Dr. and Mrs. J. Daniel Davis  
 Duck Haven Gun Club  
 Mr. Monty C. Ferrell  
 Firman Fund  
 Mr. and Mrs. C. David Fonvielle  
 The Frederic C. Hamilton Family Foundation, Mrs. Christy McGraw  
 Mr. and Mrs. Lane Green  
 Mr. George F. Grimsley  
 Mr. and Mrs. David F. Grohne  
 Mr. and Mrs. Michael S. Hartman  
 Mr. J. Madden Hatcher Jr.  
 Mr. O. Mason Hawkins  
 Mr. Nathan V. Hendricks III  
 Mr. and Mrs. Sloan Howard  
 Mr. William J. Hurst  
 Mr. and Mrs. Chad Jones  
 The Kate Ireland Foundation  
 Mr. and Mrs. Robert H. Kirby  
 Mr. and Mrs. Thomas I. Lawhorne Jr.

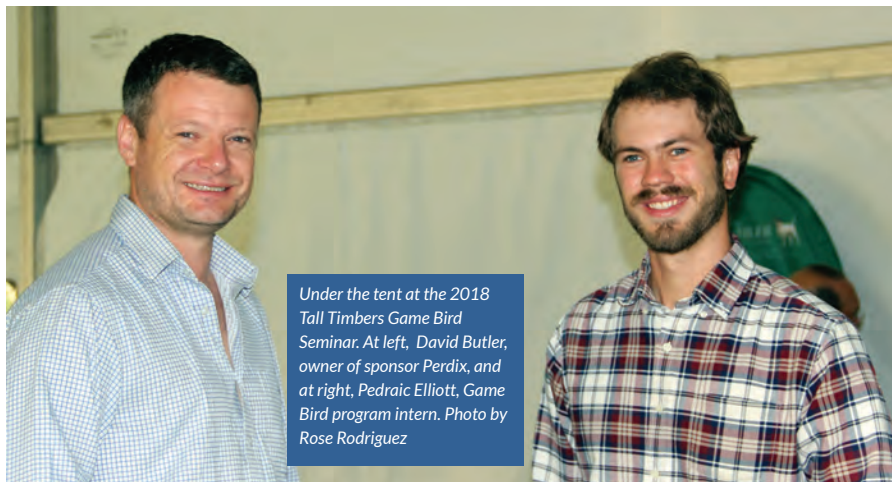
Mr. Rick B. Leverich and Ms. Sheree Lucero  
 The Melville Foundation  
 Dr. William B. Mulherin  
 The Orvis Company  
 Mr. and Mrs. Jenks Parker  
 The Pegasus Foundation, Mr. and Mrs. Melville H. Ireland Jr.  
 Mr. and Mrs. Carl Pennington Jr.  
 Mr. David D. Perkins and Mrs. Nancy Mackinnon  
 Mr. and Mrs. Clifford M. Preston  
 Quail Forever Smoky Mountain, Tennessee  
 Mr. and Mrs. Tom L. Rankin  
 Mr. David Recanati  
 Mr. Chuck Ribelin  
 Mr. Randy Ringhaver  
 Mr. David Rivenbark  
 Dr. and Mrs. John Sanders



Joe Hutto was the guest speaker at the 2018 Georgia-Florida Turkey Invitational.



# 2018 SUPPORT



*Under the tent at the 2018 Tall Timbers Game Bird Seminar. At left, David Butler, owner of sponsor Perdix, and at right, Pedraic Elliott, Game Bird program intern. Photo by Rose Rodriguez*

Dr. and Mrs. George W. Simmons  
South Jersey Quail Project  
Savannah Community Foundation,  
The Critz Family Fund  
Mr. Vic Venters  
Mr. Ben Wall  
Mr. and Mrs. George C. Watkins  
Mr. and Mrs. Brent Widener  
Mr. and Mrs. Blair Williams  
Mr. and Mrs. Jerry Williamson  
Mr. John S. Wise

## **TURKEY INVITATIONAL Long Beard**

North Florida Animal Hospital  
Williams and Parker Family

## **Gobbler**

Ashley HomeStore  
Benners Contracting  
Lynch  
Parker Poe Charitable Trust

## **Jake**

Coastal Plywood Company

Mr. and Mrs. Richard A. Corbett  
Giddens Air Conditioning  
Helena  
Ireland Family  
Jon Kohler & Associates  
Longpine Plantation  
Mitchell L. McElroy Private Forester  
Mossy Pond Plantation Services  
Plantation Supply  
Southwest Georgia Farm Credit  
Triple Creek Farm  
Ms. Ashlyn Williams

## **GAME BIRD SEMINAR SPONSORS**

Anonymous  
American Wildlife Enterprises  
Mr. and Mrs. Chas H. Cannon  
Central State Enterprises  
Jon Kohler & Associates  
Perdix  
Quail Forever

## RESEARCH PROGRAMS

### **FIRE ECOLOGY**

Anonymous  
Dr. Gail S. Baker  
Ms. Wendy H. Bicknell  
Mr. and Mrs. Robert Nunnally  
Mr. William O'Laughlin  
Mr. and Mrs. Kevin Robertson  
Dr. William L. Tietjen

### **STODDARD BIRD LAB**

Anonymous  
The Archibald Foundation  
Mr. Lamar Q. Ball III  
Mr. and Mrs. Douglas Beach  
Mr. Robert L. Crawford  
Dr. R. Todd Engstrom  
Ms. Susan M. Fitzgerald  
Hernando Audubon Society  
Mr. and Mrs. Redmond S. Ingalls  
The Jelks Family Foundation  
Robert K. Johnson Foundation  
Mrs. Dana McKinley  
Dr. Oscar Mims  
Native Nurseries of Tallahassee  
Orange Audubon Society  
Mr. and Mrs. Gavin Phipps  
Mr. Terry L. Sharpe  
Ms. Vicki Tauxe  
Venice Area Audubon Society  
Mr. Jody Walthall and Mrs. Donna Legare  
Mr. and Mrs. Brent Widener

### **BIRDQUEST**

Mr. David Arnold  
Mr. and Mrs. Warren Bicknell III  
Mr. and Mrs. Charles M. Chapin III  
Mr. James A. Cox  
Mr. Robert L. Crawford  
Mrs. Lillian Hughes  
Mr. William C. Hunter  
Mr. and Mrs. Redmond S. Ingalls  
Mr. Walter Matia  
Mr. and Mrs. Dave McElveen  
Mrs. Diane Williams Parker  
Mr. and Mrs. John E. Phipps  
Mr. and Mrs. Timothy B. Pirrung  
Ms. Melissa Proctor  
Mr. and Mrs. Tom L. Rankin  
Dr. and Mrs. George W. Simmons  
Mr. and Mrs. Ebe Walter  
Mr. Jody Walthall and Mrs. Donna Legare  
Mr. and Mrs. George C. Watkins  
Mr. Albert Way  
Mr. and Mrs. C. Martin Wood III

### **WADE TRACT RESEARCH**

Wade Research Foundation

### **WILDLAND FIRE**

Mr. and Mrs. Richard A. Corbett  
Mr. and Mrs. Alex J. Cureton  
Ms. Susan M. Fitzgerald  
Ms. Bettie Jane Grant  
Mr. and Mrs. John T. Hiers  
Mr. and Mrs. Robert H. Kirby  
Mr. William O'Laughlin  
Mr. and Mrs. David C. Scott  
Mr. and Mrs. Brent Widener

## DIXIE PLANTATION RESEARCH

Mr. and Mrs. Henry Bush  
Colquitt Exterminating  
Continental Field Trial Club  
Dr. Ron Deal  
Dixie Hunting Properties  
Dixie Trace Field Trial Association  
Doyle Hancock & Sons Construction  
Mr. Greg Gaston  
Mr. William W. Goodrich  
Goodrich Foundation  
Mr. John D. Gottwald  
Mr. George F. Grimsley  
Mr. Greg Hagar  
Mr. Grayson Hall  
Mr. James W. Hamilton  
John and Susan Mullin Fund  
Mr. John D. Johns  
Mr. and Mrs. Chad Jones  
Four Oaks Plantation  
Mr. and Mrs. Wheat Kirbo  
Mr. Gene W. Milner Jr.  
Mr. and Mrs. Steve Olsen  
Mr. Everall D. Perkins  
Mr. and Mrs. Rodney Pilot  
Pinion Point Plantation  
Mr. and Mrs. Tom L. Rankin  
Ms. Julie D. Ripley  
Mr. Sonny Roberts  
Mr. and Mrs. Michael D. Shea  
Mr. and Mrs. Wallace Edward Sholar Jr.  
Mr. John Sineath  
Southwest Georgia Quail Forever  
Mr. and Mrs. Warren Stephens





Restoration Project architect Charles Olson gave a tour of the Dixie main house to the Ladies Luncheon attendees. Photo by Rose Rodriguez

Mr. and Mrs. Kevin Stump  
Sunshine Mills  
Ms. Vicki Tauxe  
Mr. Theodore F. Thomas Jr.  
Mr. J. N. Tuten Jr.  
Mr. Vic Venters  
Mr. and Mrs. Virgil R. Williams  
Mr. Keith Wright

Mrs. Kathleen Kelly  
Mrs. Kathy Lanigan  
Mr. and Mrs. Michael Ledyard  
Parker Poe Charitable Trust  
Mrs. Kay Rankin  
Ms. Jean Reynolds  
Mrs. Paula Ringhaver  
Ms. Julie D. Ripley  
Mrs. Lindi Simmons  
Mrs. Paula Smith

Southwest Georgia Farm Credit  
Mrs. Iris Vail  
Ms. Kathleen Vignos  
Mrs. Cyndi Watkins  
Mrs. Ginger Wetherell  
William Howard Flowers Jr.  
Foundation, Mr. and Mrs. C. Martin  
Wood III  
Mrs. Daphne Wood

## DIXIE MAIN HOUSE RESTORATION PROJECT

Anonymous  
Mrs. Jennifer Benners  
Mrs. Ann Brannen  
Mrs. Lee Chubb  
Mrs. Cornelia Corbett  
Mrs. Betty Crowe  
Mrs. Rosamond Davis  
Mrs. Sally Humphrey  
Mrs. Nancy Hutson  
James Madison Institute



At left, First Lady Ann Scott at the Dixie Ladies Luncheon with Ginger Wetherell, a member of the Dixie Main House Restoration Committee. Mrs. Scott was the keynote speaker at the event.

## LAND CONSERVANCY

### CONSERVATION EASEMENT CONTRIBUTIONS

Mr. and Mrs. Wade Patterson,  
Patterson Tract  
Mrs. Maury F. Shields, Searcy Place  
Ms. Barbara Tomlinson, Old Growth  
Woods  
Mr. Harry M. Tomlinson Jr., Old  
Growth Woods  
Mr. and Mrs. Richard Vann,  
Docwood Farm  
Ms. Barbara Mason White, Old  
Growth Woods  
Ms. Jane M. White, Old Growth  
Woods  
Ms. June Bailey White, Old Growth  
Woods  
Mr. Samuel White, Old Growth  
Woods  
Mr. Wesley White, Old Growth  
Woods  
Mr. and Mrs. C. Martin Wood III,  
Live Oak Plantation  
Mr. and Mrs. C. Martin Wood III,  
Searcy Place

### GENERAL PROGRAM SUPPORT- TOP DONORS

Elisha-Bolton Foundation  
Mr. and Mrs. Robert Nunnally  
The Perkins Charitable Foundation  
Turner Foundation  
William Howard Flowers Jr.  
Foundation

### RED HILLS DEFENSE FUND

William Howard Flowers Jr.  
Foundation

### RED HILLS OUTREACH & EDUCATION

The Archibald Foundation

Community Foundation of South  
Georgia, Cherokee Foundation  
Charitable Fund  
Williams Family Foundation of Georgia



2018 Red Hills Fire Festival attendee greeted by Burner Bob. Photo by Rose Rodriguez

### RED HILLS PLANNING PROGRAM

Mrs. Robert P. Crozer  
Mr. and Mrs. Gary F. Griffin  
Gulf Winds Track Club

### LAND CONSERVANCY GENERAL CONTRIBUTORS

Mr. and Dr. Ken Allman  
Mr. Thomas Bianco  
Mr. and Mrs. Lane Green  
Mr. and Mrs. Kenneth D. Haddad  
Land Trust Alliance  
Leadership Florida  
Dr. and Mrs. Douglas C. McPherson  
Mr. Rick Minor  
Mrs. Beckie Preston  
Mrs. Sallie P. Sullivan  
Mr. and Mrs. Steve Swartz  
Thomasville Landmarks  
Mr. and Mrs. Brent Widener



# 2018 SUPPORT

## Remembering George Robertson Langford Sr.

George R. Langford was a Tall Timbers Trustee from 1992-1998, serving as treasurer. He was on the Investment Committee and Foundation Board, and also on the Land Conservancy Committee. George's sons Lawton and Rob related one of their favorite stories about Tall Timbers, which involved the acquisition of the Hannah Hammock tract, property to the west of Tall Timbers for sale and slated for possible development. The purchase price was several millions of dollars, and George offered their cabin as a meeting site to invite some potential donors. "Kate Ireland gathered everyone together to make 'the ask.' She went around the room suggesting a figure she thought each person should give. Dad, feeling apprehensive about what Kate might suggest he give, beat her to the number. He said, 'Kate I pledge the same percentage of my net worth as your pledge is to your net worth!'" They don't remember the amount, but Tall Timbers raised enough to make the purchase. Lane Green, retired Tall Timbers Executive Director, remembers George as a self-made, successful businessman who was the ultimate fundraiser and finance officer. Lane credits George with establishing the Tall Timbers Foundation, which was developed to protect the assets of the research institute and secure future growth. And Tall Timbers assets have grown thanks to his legacy — the Tall Timbers Foundation.



## MEMORIALS/HONORARIUMS

### HONORARIUMS

Anonymous in honor of Robbie Green  
Bernard Baldwin in honor of Susan and John Mullin  
Victoria Erhart in honor of Charlie Chapin and Elsoma  
Joseph Guy Helmsing in honor of Kathy and Tom Weller  
John and Susan Mullin Fund in honor of Clay Sisson  
Alan Levy in honor of Heather Levy  
Roy McCraw in honor of Tom Rankin  
Dana McKinley in honor of Redmond, Caroline and Davey Ingalls  
Smyth McKissick in honor of George and Lindi Simmons  
Raymond Mendez in honor of Nancy and Les Fuller  
Samuel Oates Jr. in honor of Mr. and Mrs. James E. Butler

Orange Audubon Society in honor of Jim Cox  
Beckie Preston in honor of Cliff Preston  
James Schortemeyer in honor of Jim Cox  
Michael Sheridan in honor of Jim Cox  
Michael Terry in honor of Mason Hawkins  
Yellow-Crowned Foundation in honor of Friends of Kickapoo

### MEMORIALS

James Alexander in memory of Mr. Edgar Garrad  
Bernard Baldwin in memory of Mr. Edgar Garrad  
Elisha-Bolton Foundation in memory of Mrs. Betsy B. Schafer  
Christine Griffith in memory of Jacob Dante Boraggina

**Tall Timbers also remembers these devoted supporters who passed in 2018:**

**T. K. Wetherell  
J. V. Shields Jr.**

Bernie Hyde in memory of Peggy Post  
Kristin Kentopp in memory of Kate Ireland  
Becky and Marshall Kerlin in memory of Sue Nichols  
Grace and Tom Lawhorn in memory of Dr. William D. Long  
Douglas McPherson in memory of Dr. H. L. Cheney Jr.  
Ann and Andrew Peipers in memory of David Harald Peipers and Dr. Stuart Cameron Smith  
Lesley Simmons in memory of John M. Simmons  
Patricia Warren in memory of James W. Warren, Jr.

Tall Timbers has been an integral partner in helping my family to develop and implement a vision for land and wildlife conservation on our property in Alabama.

That vision is becoming a reality through significant habitat improvement and a wild quail translocation project that is in full swing. The development of our vision and its implementation would not have been possible without the knowledge, expertise and passion of the Tall Timbers crew. I am proud and honored to have the opportunity to partner with them to create a perpetual legacy of eternal conservation for my family.

Our daily goal is to be good stewards of what Tall Timbers helped us build and to wholeheartedly support them in their efforts to bring similar opportunities to other landowners.

*– Kevin Stump*



*Wild quail release. Clay Sisson and Kevin Stump*



## TALL TIMBERS FOUNDATION

The Tall Timbers Foundation manages the Tall Timbers Endowment Funds, those long-term assets that help fund research, conservation and support programs at Tall Timbers.

### TALL TIMBERS FOUNDATION ENDOWMENT FUNDS

- » Bird Window Endowment
- » Clifton J. Bailey Endowment
- » Corbett Fire Endowment
- » Dixie Plantation Endowment
- » Forestry Endowment
- » Gerry Game Bird Endowment
- » General Operating Endowment
- » Land Conservancy Endowment
- » Red Hills Land Conservation Opportunity Fund
- » Tall Timbers Land Conservancy Stewardship Fund
- » Wade Tract Endowment
- » Wildlife Research Endowment

### ENDOWMENT DONORS

Mr. and Mrs. Charles M. Chapin III  
Elisha-Bolton Foundation  
Mr. David D. Perkins and Mrs. Nancy Mackinnon  
Dr. and Mrs. George W. Simmons

### KATE IRELAND MEMORIAL DINNER & AUCTION

#### AUCTIONEER

Mr. Charlie Whitney

#### KATE IRELAND SPONSORS

Mr. and Mrs. Richard A. Corbett  
Four Oaks Plantation  
The Kate Ireland Foundation  
Mr. and Mrs. J. Wesley Langdale III  
North Florida Animal Hospital  
Mr. and Mrs. Tom L. Rankin  
Visiting Angels of Tallahassee  
Mr. and Mrs. George C. Watkins

#### BOBWHITE QUAIL SPONSORS

Ashley HomeStore  
BakerHostetler  
Mr. and Mrs. Robert H. Kirby  
The Parker Poe Charitable Trust

#### LONGLEAF SPONSORS

Abraham Baldwin Agricultural College  
Benners Contracting

Mr. Frank Foley  
Jon Kohler & Associates  
Mr. E. Smyth McKissick  
Mid-State Machine & Industrial Corporation  
NAI Talcor  
Mr. and Mrs. Robert Nunnally  
Plantation Services  
Mrs. Lesley S. Simmons  
Southwest Georgia Farm Credit  
Wiregrass Millwork & Lumber

#### RED HILLS SPONSORS

Argos  
DuBose Ausley Family  
Barnes Capital Group  
Benson's Heating & Air Conditioning  
Bruce W. Kirbo Jr., Attorney at Law  
Chas H. Cannon Land & Timber Company  
Chemonie Plantation  
Coastal Plywood Company  
Mr. and Mrs. Edward A. Davis Jr.  
Dykes Everett & Company  
First National Bank  
Fontaine Maury Brand Design  
Mr. Henry H. Gordon  
Mr. and Mrs. Redmond S. Ingalls  
Keith McNeill Plumbing  
Prime Meridian Bank  
Thomas County Federal  
Mr. and Mrs. C. Martin Wood III  
  
**WIREGRASS SPONSOR**  
Barton Construction  
Mr. and Mrs. Charles M. Chapin III  
The Conservation Fund  
Ferguson Waterworks

ROSE RODRIGUEZ



Dinner & Auction guests: L-R, Susan Turner, Jenny Ladson and Elizabeth Young.

Fleming & Riles Insurance  
Florida Forestry Association  
Georgia Forestry Commission  
Georgia Forestry Foundation  
Godwin Jewelers  
Grimsley & Company CPAs  
Lanigan & Associates P. C.  
Mr. and Mrs. Michael Ledyard  
Mac's Wingshooting Adventures  
Messer Caparello Attorneys at Law  
  
Mr. and Mrs. Jeffrey M. Nielsen  
Dr. and Mrs. John B. Reynolds  
Red Hills Catering  
Ring Power Corporation  
Rutledge Ecenia  
Southern Forestry Consultants  
Thomasville National Bank  
UGA Warnell School of Forestry & Natural Resources  
Westervelt Ecological Services



ROSE RODRIGUEZ



Above at left, Sheree Locero with an auction pointer puppy; and at right, is Jim Karels, the Director of the Florida Forest Service, who was the honoree for the 2018 Kate Ireland Memorial Dinner & Auction. Photos by Rose Rodriguez



# 2018 STAFF

## ADMINISTRATION

**William E. Palmer**, PhD, President/CEO

**Melissa Proctor**, Controller, Chief Financial Officer

Lisa Baggett, Facilities Coordinator

Jerome Golden, Facilities

Kurt Haffner, IT Systems Coordinator

Rosi Nichols, Accountant

**Joe Noble**, GIS/Information Technology Program Director

**Jennifer Roberts**, Facilities Director, Executive Assistant

Hunter Taylor, Accounting Assistant

## DEVELOPMENT

**Crystal Davis**, Development Director

Amy Allen, Development Coordinator

Lourena Maxwell, Development & Marketing Coordinator (thru March)

## INFORMATION RESOURCES

**Rose Rodriguez**, Communications Director

Juanita Whiddon, P/T Archives, & Historical Resources

## LAND CONSERVANCY

**Kevin McGorty**, Director

Neil Fleckenstein, Red Hills Planner

Jessica Coker, Administrative Assistant

Josh Gamblin, Conservation Stewardship Manager

Brian R. McClain, Lesson Plan Developer

Kim Sash, Conservation Biologist

Shane D. Wellendorf, Conservation Coordinator

Brian Wiebler, Red Hills Community Outreach/Education Coordinator

Ken Wood, Lesson Plan Developer

## RESEARCH & LAND MANAGEMENT

**William E. Palmer**, PhD, Director of Research

Billy Atkins, Central Florida Rangeland Research (CFRRP)

Andrea Barstow, P/T Office Manager, Dixie Plantation

**Geoff Beane**, Research/Program Manager, CFRRP

Sarah K. Brown, Public Lands Monitoring Coordinator

Stephen Caird, Upland Ecosystem Restoration (UERP) Technician

Craig Campeau, Wildlife Technician, CFRRP

Andrew Chase, Forest Operations

**Jim Cox**, Stoddard Bird Lab Director

Dixie Davis, Geospatial Data Base Administrator

Austin Dixon, P/T Fire Science Technician

Cinnamon Dixon, Ecosystems Services Project Coordinator

Saunders S. Drukker, Fire Science Technician

Nathan Eldridge, Game Bird Technician

Padraic Elliott, Game Bird Technician

Joshua Faylo, P/T Dendrochronology Technician

Steve Flanagan, Post-doctoral Fellow

Randy Floyd, Plantation Manager, Dixie Plantation

Laura Fowler, Game Bird Technician

Paul Grimes, Regional Game Bird Biologist

David Grimm, Land Management and Private Lands Burn Team

Gloria Hagan, Facilities, Dixie Plantation

Berlyna Heres, Fire Science Technician

**J. Kevin Hiers**, Wildland Fire Scientist

Corbin Holder, Game Bird Technician, Orton Plantation

Jean Huffman, Fire Ecology Technician

Alex Jackson, Game Bird Biologist, Dixie Plantation

Bradley Kubecka, Game Bird Technician

Christopher Kunkle, Game Bird Technician, CFRRP

Heather E. Levy, Stoddard Bird Lab Technician

William H Lewis, Land Management Technician, Dixie Plantation

Dylan Lockard, Fire Ecology Technician

William Lutz, Game Bird Technician, CFRRP

Randy Marshall, Maintenance, Dixie Plantation

John-Michael McCormick, Assistant Land Manager, Dixie Plantation

Diana McGrath, Game Bird Biologist

Rob Meyer, Woodpecker Conservation Biologist

Molly Neely-Burnam, P/T Game Bird Technician

Morgan Oberly, Lead Game Bird Technician

Kodi Osborn, Wildlife Technician

Richard Paulhamus, Assistant Program Manager, CFRRP

Ethan Perego, Lawn Maintenance

Scott Pokswinski, Research Biologist, Prescribed Fire Science

Tom Radzio, Stoddard Bird Lab Technician

**Kevin M. Robertson**, PhD, Director, Fire Ecology Program

Eric Rowell, PhD, Wildland Fire Scientist

Monica Rother, PhD, Fire Ecologist

Elliot Schunke, Stoddard Bird Lab Technician (Temp)

Greg Seamon, Fire Training Specialist, Prescribed Fire Training Center

Shelby Simons, Game Bird Technician

**Clay Sisson**, Director Albany Quail Project & Dixie Plantation Research

David Sisson, Game Bird Technician (AQP/Dixie Plantation Research)

Matt Snider, Private Lands Prescribed Fire Coordinator

Allison Snyder, Fire Ecology Technician

**Eric Staller**, Director of Land Management and Fire Operations

Joel L. Stewart, Fire Science Technician

Lindsey Stawowy, Stoddard Bird Lab Field Assistant

Wayne Taylor, Longleaf Legacy Landscape Fire Team Coordinator

**Theron M. Terhune**, PhD, Director Game Bird Research Program

Casey Teske, PhD, Spatial Fire Ecologist

Angelo Tisone, Game Bird Technician

Reginald Thackston, Carolina Regional Quail Project Advocate

James Tucker, UERP Field Technician

Stoney Vickers, CFRRP Field Technician

Scott Ward, UERP Field Technician

Alaynah Weiss, Stoddard Bird Lab Technician

Leslie Whiddon, Land Management Technician, Dixie Plantation

Adam White, Game Bird Technician, Albany Quail Project

## GRADUATE STUDENTS

Bobbi Carpenter, University of Florida, Game Bird

Dana Carpenter, University of Georgia, Fire Science

Samantha Dietz, Florida State University, Stoddard Bird Lab

Mary Mack Gray, University of Florida, Stoddard Bird Lab

Aaron Griffith, University of Tennessee, Game Bird

Angelina Haines, Auburn University, Game Bird

Michael Hazelbaker, University of Georgia, Game Bird

Katie Hooker, University of Florida, Game Bird

Kyle Lunsford, University of Georgia, Game Bird

Paula Magnani, University of Florida, Fire Ecology

Kristin Malone, University of Florida, Game Bird

Emily Prosser, University of Georgia, Game Bird

Bradley Roberts, University of Georgia, Game Bird

Justin Rectenwald, University of Georgia, Albany Quail Program

## INTERNS

Dylan Bell, NJ, Fire Science

Audrey Browning, FL, Fire Ecology

Marie Chappell, FL, Stoddard Bird Lab

Ryan Connor, PA, Game Bird, Orton Plantation

Samantha Dame, FL, Game Bird, CFRRP

Padraic Elliott, FL, Game Bird

Christian Farris, TX, Game Bird

Thomas Fortner, GA, Game Bird

Zachery Holmes, FL, Game Bird

Keiki Howe, AR, Fire Science

Arron Johnson, GA, Game Bird

Maren Johnson, FL, Fire Science

Kenneth Kelly, GA, Game Bird

Anthony Laucevicius, Fire Ecology

Kelly Anne, MacCombie, FL, Game Bird

Megan Martin, KY, Game Bird

Jacob McKittrick, Game Bird, Dixie Plantation

Ethan Milley, GA, Fire Science

Mitchell Meuser, PA, Game Bird, Orton Plantation

Luke Mitchell, GA, Game Bird

Megan Rhone, NJ, Fire Science

Camila Rodriguez-Barbarosa, FL, Game Bird

Nicholas (Cole) Schwab, FL, Land Management

Sara Smith, TN, Fire Science

Jason Stockstill, GA, Fire Science

Gianna Tarquinio, FL, Fire Ecology

Andrew Ward, CT, Game Bird

Breanne Ward, FL, Fire Ecology

Maxwell Williams, GA, Game Bird

Seth Williams, CA, Game Bird



*Shelby Simons, above, is searching for radio-tagged quail with a telemeter. Shelby was a technician with the Game Bird program in 2018, until she began graduate studies at the University of Georgia on understanding bobwhite demographics in relation to nutritional supplementation and resource availability on public lands in Florida.*

P/T = Part Time



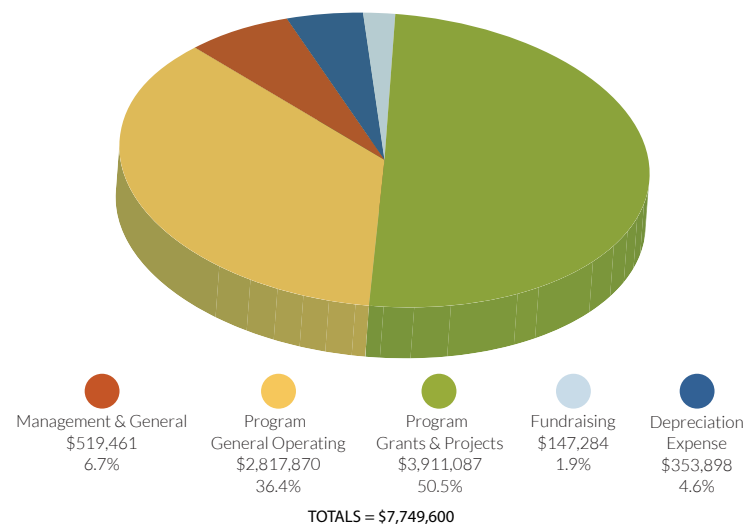
# 2018 STATEMENT OF FINANCIAL POSITION

## TALL TIMBERS RESEARCH, INC.

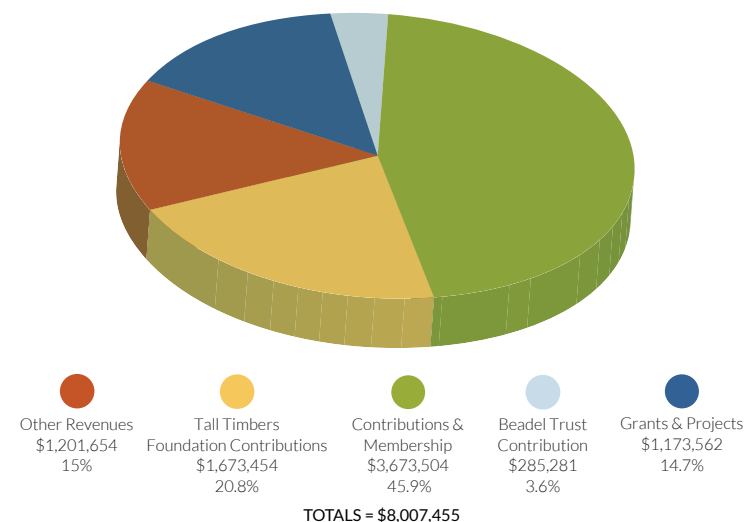
*Includes Subsidiaries*

	TOTAL ALL FUNDS	TOTAL ALL FUNDS
	12/31/2017	12/31/2018
<b>ASSETS</b>		
<b>Current Assets</b>		
Cash & Cash Equivalents	\$1,997,315	\$2,115,929
Accounts Receivable	344,222	438,334
Grants/Projects Receivable	2,198	21,500
Other Receivables	-	-
Due from Tall Timbers Foundation, Inc. (Net)	40,613	40,613
Prepaid Expenses	57,737	30,011
<b>Total Current Assets</b>	<b>\$2,442,085</b>	<b>\$2,646,387</b>
<b>Property &amp; Equipment</b>		
At Cost less Accumulated Depreciation	\$35,758,131	\$36,016,578
<b>Other Assets</b>	<b>34,419</b>	<b>34,419</b>
<b>TOTAL ALL ASSETS</b>	<b>\$38,234,635</b>	<b>\$38,697,384</b>
<b>LIABILITIES &amp; NET ASSETS</b>		
<b>Liabilities</b>		
Accounts Payable	97,869	199,114
Accrued Liabilities	30,625	37,789
Notes Payable	64,634	119,105
Deferred Revenue	124,275	166,289
<b>Total Liabilities</b>	<b>\$317,403</b>	<b>\$522,297</b>
<b>NET ASSETS</b>		
Without Donor Restrictions	34,475,145	34,385,959
With Donor Restrictions	3,442,087	3,789,128
<b>Total Net Assets</b>	<b>\$37,917,232</b>	<b>\$38,175,087</b>
<b>TOTAL LIABILITIES &amp; NET ASSETS</b>	<b>\$38,234,635</b>	<b>\$38,697,384</b>

## ALLOCATION OF FUNDS



## SOURCES OF REVENUE







13093 Henry Beadel Drive  
Tallahassee, FL 32312  
850/893-4153 PH | 850/893-6470 FAX  
[www.talltimbers.org](http://www.talltimbers.org)



Address service requested

Non-profit Org.  
U.S. POSTAGE  
PAID  
Permit No. 329  
Tallahassee, FL



Editing & Design - Rose Rodriguez

## THE 2018 CONTINENTAL FIELD TRIALS AT DIXIE PLANTATION

