



TALL TIMBERS

2020 Annual Report



ANNUAL REPORT

Tall Timbers had an amazing year, which capped off the mid-point of our 10-year strategy to protect the conservation values of the region, expand the use of prescribed fire nationally, and apply exemplary land stewardship across the southeast.

Tall Timbers made a difference locally, regionally and nationally. It is incredible and reassuring that such a small group of people can help prevent ill-conceived infrastructure projects threatening the Red Hills region, while at the same time lead new national directions for prescribed fire science and training, and assist individual landowners to achieve their wildlife management and conservation goals.

Our staff's deep knowledge of how ecosystems function is built on decades of research linked with land management. This provides the foundation for our common-sense solutions to issues both incredibly large and intricately small. Staff's expertise, combined with our Board's direction to seek truth, be relevant, solve problems, and help people, completes the recipe for our approach.

There is much more to be done to solve complex conservation issues, such as national wildfire disasters, declines in wildlife species, and threats to existing conservation lands. Tall Timbers utilizes the freedom of our position as a private non-profit to be both an instigator and a convener—we bring science and our land stewardship ethic to each topic we select. Our updated strategic plan will guide our efforts over the next five years as we continue to make deliberate choices to increase our conservation impact and relevance.

We hope you are as proud of our accomplishments as we are. It is your philanthropy that provides us with the independence and flexibility to act. We thank you for your generous support and for the invitation to play a part to help you achieve your conservation goals.



STAFF'S EXPERTISE, COMBINED WITH OUR BOARD'S DIRECTION TO SEEK TRUTH, BE RELEVANT, SOLVE PROBLEMS, AND HELP PEOPLE, COMPLETES THE RECIPE FOR OUR APPROACH.



Tom L. Rankin
Board Chairman



Bill Palmer, PhD
President & CEO

Above – Tall Timbers' research staff assist USDA Forest Service scientist Joseph O'Brien remove infrared camera equipment after a research burn at the Hitchiti Experimental Forest in Jones County, Georgia near Macon. This data will be used to evaluate fire effects on fuels and vegetation. Photo by Wade Ross

Contents

Research	4
Conservation	9
Support	12
Tall Timbers Foundation	14
Honorariums/Memorials	24
Staff	24
Statement of Financial Position	27

Mission

The mission of Tall Timbers is to foster exemplary land stewardship (ELS) through research, conservation and education. Our primary research focus is the ecology of fire and natural resource management including bobwhite quail and other wildlife in the southeastern coastal plain. Our conservation efforts are dedicated to helping protect the distinctive Red Hills landscape of south Georgia and north Florida, and its traditional land uses. Our education program transfers research and conservation information for resource management.

ABOUT THE COVER

Fire Science intern Carl Blackmore prescribed burning at the Pebble Hill Fire Plots near Thomasville, Georgia. The plots have had different fire return intervals applied since 2005, to study the effects of fire regime on native longleaf pine-wiregrass plant communities, woody plant resprouting, soils, fuel loading, and fire behavior. Photo by Kevin Robertson.

TALL TIMBERS RESEARCH, INC. 2020 BOARD OF TRUSTEES

CHAIRMAN

Mr. Tom L. Rankin

VICE-CHAIRMAN

Mrs. Cornelia G. Corbett

SECRETARY

Mrs. Daphne F. Wood

TREASURER

Dr. George Simmons, DVM

TRUSTEES

Mr. Charles M. Chapin

Mrs. Rosamond C. Davis

Mr. Kenneth D. Haddad

Mr. O. Mason Hawkins

Mr. Redmond Ingalls

Mr. Robert H. (Rip) Kirby

Mr. John Wesley Langdale III

Dr. Rodman R. Linn, PhD

Dr. Karl Miller, PhD

Mr. David D. Perkins

Mrs. Virginia Wetherell Scott

Mrs. Kate Sullivan Scovil

Mr. Hewitt B. Shaw

Dr. George W. Simmons

Mr. Witt R. Stephens, Jr.

Mr. Reggie E. Thackston

Mr. Remy W. Trafelet

Mr. George Watkins

TALL TIMBERS FOUNDATION, INC.

CHAIRMAN

Mr. C. Martin Wood III

TRUSTEES

Mr. Thomas A. Barron

Mr. O. Mason Hawkins

Mr. Tom L. Rankin

Dr. George W. Simmons

Mr. George C. Watkins

Mr. J. Ben Watkins III



Research technician Destinee Story Braden surveying for Black Rails along a canoe route at St. Vincent National Wildlife Refuge, one of the sites along the Florida Gulf coast the Stoddard Bird Lab is visiting in search of this elusive marsh bird. Photo by Heather Levy

RESEARCH Where Science Meets Management

In 2020, Tall Timbers made major moves to regain its position as a national and international leader in fire research and application. In January, we hosted the Wildland Fire Leadership Council, including the Secretary of Agriculture Sonny Perdue, Forest Service Chief Vicki Christiansen, Undersecretaries of Agriculture and Interior, and senior staff from across federal and state agencies, and NGOs working on wildland fire in the U.S.

In June, we met with Secretary of Interior David Bernhardt, Congressman Neal Dunn, and U.S. Fish & Wildlife Service staff at St. Marks National Wildlife Refuge. Later in the summer, we participated in an event at Fort Benning, Georgia, with the Secretaries of Agriculture and Interior and senior Department of Defense personnel. In all of these settings, we pressed for increased prescribed fire use and to ensure its support. Our seat-at-the-table for these meetings and events is a result of the world-class science Tall Timbers does, our long history as a thought leader and progressive instigator on prescribed fire issues, and the successes in the use of fire for conservation in the Red Hills region.

Tall Timbers continues to be the leader in quail science and quail management with the ultimate goal to help hunters have more quail, and to sustain and expand wild quail hunting. While we continue to provide the best available science-based information and outreach service to managers in the Red Hills and Albany regions, the demand for our information and time from out-

side these traditional areas has greatly increased. The Game Bird Program has become the leading authority on bobwhite translocation to build new populations of wild quail in Alabama, the Carolinas, the rangelands of central Florida, and now the western pineywoods ecoregion of east Texas and surrounding areas. In late 2020, the Western Pineywoods Quail Program was established to restore wild quail populations to this region.

The Stoddard Bird Lab continued long-term work with rare and declining birds in the Red Hills region, while also launching new studies on imperiled species. Progress continues with reintroduction of Red-cockaded Woodpeckers on Livingston Place and Brown-headed Nuthatches to Jonathan Dickinson State Park in south Florida. We provided guidance and field support for an attempt to return the Brown-headed Nuthatch to national forests in Missouri. Our study published in *Avian Conservation and Ecology* on the



JUSTIN RECTENWALD



L-R, Heather Hill and Heather Levy collect vegetation data on St. Vincent National Wildlife Refuge, which is one of the survey sites for the Black Rail project. Photo by Destinee Story Braden

Bahama Nuthatch led to recognition of the island population as a distinct species.

One new study focuses on the elusive Black Rail found in coastal marshes of the Big Bend region and one of the latest additions to the list of endangered species. We worked with Florida State University and Cornell University to devise new computerized methods for analyzing data collected on Black Rail calls by autonomous recording devices.

REGAINING OUR POSITION AS A NATIONAL AND INTERNATIONAL LEADER IN FIRE RESEARCH AND MANAGEMENT

Tall Timbers is providing leadership in the national Fire and Smoke Model Evaluation Experiment (FASMEE). Tall Timbers' staff led the fire effects mission and coordinated logistics for the November Annabella prescribed fire at Fishlake National Forest in Utah. The fire was intentionally high-intensity and stand-replacing, ignited to restore declining quaking aspen forests and the elk that need them. Teams of over 70 world-class scientists collaborated on the burn. Tall Timbers scientists will continue to track the ecological effects of these burns for years to come, using the lessons learned in the Red Hills to highlight the benefits for biodiversity and fire safety. Tall Timbers' engagement in national-scale fire research illustrates the scientific leadership and rigor that our teams bring to these partnerships.



KEVIN JIERS

RESEARCH




STUDYING A DIVERSITY OF FIRE-DEPENDENT SPECIES



Above, research technician, Nelson Ball (at left) and Stoddard Bird Lab biologist, Rob Meyer, with newly found lupine site in the Apalachicola National Forest. Top right, a Frosted Elfin butterfly that researchers captured and marked with colored dots. The pattern is a key to where in the forest it was found. Bottom right, Nelson Ball with netted Frosted Elfin. Photos by Dave McElveen

Tall Timbers researchers are studying the life history of the rare Frosted Elfin, a fire-dependent butterfly of sandhills longleaf pine ecosystems. The elfin has been extirpated from large portions of its range in the eastern US, but the local population in the Apalachicola National Forest (ANF) is healthy. Because the rare butterfly will be a candidate for listing as an endangered species, it's a good time to gather information. Rob Meyer and research associate Dave McElveen submitted a research proposal to the U.S. Fish and Wildlife Service to investigate several key issues for managing Frosted Elfin populations across their range.



GAINING DEEPER INSIGHTS ON LOCAL FOREST COMMUNITY TYPES

Shortleaf pine-oak-hickory native community type on Tall Timbers Research Station. Photo by Kevin Robertson



Breanne Ward (left) and Courtney Gunville (right) measuring trees to establish a long-term plot in the shortleaf pine-oak-hickory native community on the Atkinson Course (previously Scrub Course or Jones Course) on Tall Timbers Research Station. Photo by Kevin Robertson

The effort of several Fire Ecology Lab interns over two years resulted in a new map of forest community types found on Tall Timbers. The interns identified 12 forest community types: upland loblolly-shortleaf pine, upland shortleaf pine, shortleaf pine-oak-hickory, longleaf pine, hardwood slope forests (mostly hickory), ravine forests (with tulip poplar, sweetbay, and gums), upland fire-excluded pine-hardwoods, wetland early successional hardwoods, beech-magnolia forest, live oak-loblolly pine bottomlands, gum swamp, and cypress swamp. The map will be useful for both Tall Timbers' researchers and visiting scientists interested in the various natural resources the property has to offer. It speaks to the considerable ecological diversity at relatively small scales on Tall Timbers and similar properties throughout the Red Hills region.

RESEARCH



Brad Kupecka releases quail that were translocated. Brad directs the Western Pinewoods Game Bird Program and oversees quail research in east Texas and surrounding areas.

2020 YEAR IN REVIEW

- » During 2020, Tall Timbers scientists published more than 40 peer-reviewed papers in top journals including Nature Scientific Data, Journal of Ecology, Nature Scientific Reports, Ecosystems, Avian Conservation and Ecology, Journal of Wildlife Management, Ecosphere, Landscape Ecology and several book chapters.
- » Awarded more than \$7 million in research funding from a diversity of public and private sources to support our research.
- » Added the Western Pinewoods Game Bird Program. Tall Timbers now has 6 regional programs.
- » Since Tall Timbers began translocation quail, over 7000 quail have been moved to lands dedicated to building new populations of wild quail.
- » The Albany Quail Endowment funding goal was achieved, ensuring a director position for quail research and outreach in the region
- » Published two leading papers on prioritizing future fire research: a paper that coined Prescribed Fire Science and a global paper on needs for fire ecology research.
- » Kevin Hiers, Board member Rod Linn, and their collaborators were awarded the R&D 100 for their development of QUIC-Fire, a cutting-edge fire behavior modeling tool to advance prescribed fire application and enable better understanding of wildfires.
- » Scientists were awarded funds from NASA to document regional and national changes in prescribed fire caused by COVID-19.
- » Scientists published major papers on post-fire tree mortality and development of a national fire-caused tree mortality database.
- » Scientists continued long-term measurements at Woodyard Hammock, an old-growth bottomland forest on Tall Timbers, and began a new long-term study at the Scrub Course, a rare intact shortleaf pine woodland on the property.
- » Kevin Hiers assumed his role as Chair of the Georgia Prescribed Fire Council. Staff serve in leadership roles in Fire Councils in Florida, Georgia, and Alabama.
- » Jim Cox led a paper on how fire and four federally listed birds interact.
- » The Stoddard Lab began major research on the rare butterfly, the Frosted Elfin, and how the species persists in prescribed fire regimes in the region.

LAND CONSERVANCY



In the year of the COVID-19 pandemic, the Land Conservancy had one of its busiest years on record. While our staff may have been working from home, work on critical advocacy issues and land conservation transactions never shut down.

Sometimes a conservation organization is faced with a monumental threat that can undermine its mission and land conservation legacy. In 2019, the Florida Legislature authorized the design and construction of three new, ill-conceived toll road corridors through rural Florida, including the proposed 150+ mile Suncoast Connector, extending from Citrus County along the Big Bend coast and through Jefferson County

in the Red Hills. The proposed Suncoast Connector would have provided a direct link between the Red Hills and the Florida Turnpike in Central Florida. The proposal included planning for water and sewer infrastructure designed to encourage development in rural areas.

Instead of waiting for fate to intervene, Tall Timbers took charge. Throughout 2020, we worked with local partners in Jefferson County and statewide conservation organizations to convince the Toll Road Task Force and legislature that the Suncoast Connector superhighway was not needed and a waste of taxpayer dollars. Its impact on the environment and the rural farming

communities would be devastating to the Big Bend region.

Our team was led by Tall Timbers' Planner Neil Fleckenstein, President/CEO Bill Palmer, and Board Chairman Tom Rankin. The professional lobby firm Southern Group was hired to support our efforts.

Our generous supporters (see 2020 Support section) provided both critical funding and a groundswell of opposition to help combat this controversial project. Outreach efforts resulted in over 2,000 people repeatedly contacting public officials on behalf of Tall Timbers. This local chorus was joined by thousands of Floridians opposed to these toll roads.

Recognizing the enormous cost, the Florida Legislature repealed the M-CORES toll roads program, eliminating authorization for the three toll roads that bypassed Florida's transportation planning process. The repeal, however, stops short of killing two of the three proposed toll roads, and redirects transportation officials to improve arterial roads and truck routes. For the Big Bend region, existing U.S. 19 could see new controlled access segments to reduce traffic congestion near rural communities, especially in Citrus County. Any roadway improvements northward of the town of Perry would likely be made in the U.S. 221 corridor leading to Interstate 10 in Madison County.

Boondoggle road projects never seem to die — they are reinvented with new names. Tall Timbers



Jefferson County Board of County Commissioners meeting debating toll road issue.

LAND CONSERVANCY



Longleaf pine-wiregrass savanna showcases the rolling hills of Wybulu.

will remain vigilant and continue monitoring any major roadway improvements to ensure our conservation interests and the Big Bend environment are protected.

It is clear that local residents and landowners care deeply about our region. In 2020, the Land Conservancy welcomed five new conservation easement donors.

In the Aucilla River watershed, Fritz Tract contains intact forested and depressional wetlands. The landowner, Jerry Fritz, has been working since the 1990s to restore the original longleaf pine ecosystem of the property.

The Longhorn Land Investments conservation easement lies east of the Aucilla River and

includes high quality forested depressional wetlands and rural working lands. This donation by Kyle Cooper and Curt Morris spans from Brooks County, Georgia, to Jefferson County, Florida, and fills a noticeable gap between a large, continuous stretch of Red Hills protected properties.

Wybulu Farm and Timber is located west of Thomasville, Georgia, in the heart of the Red Hills. The historic property was included in Herbert Stoddard's famous Co-Operative Quail Investigation in the 1920s. Miles and Krista Watkins' easement donation on this important land protects pristine longleaf pine-wiregrass savanna, particularly beneficial to the federally endangered red-cockaded woodpecker.

Moving west to the Flint River basin, Dr. William "Hap" and Mildred Tietjen placed their family property under conservation easement to ensure the protection of key ecological features and the promotion of longleaf pines. Tietjen Tract also contains bottomland hardwood forests and non-alluvial creeks and swamps, supporting several species of high priority.

The Spring Canyon conservation easement in the Apalachicola River basin boasts longleaf pine-wiregrass savanna and steephead ravines, one of the rarest habitats in Florida – the property provides habitat for species like gopher tortoise, Florida pine snake, and mountain laurel. The landowners, Helen and Tom Roth, are outstanding stewards of Spring Canyon and manage the property to protect native plants and restore longleaf pine.



Helen Roth working her Spring Canyon lands, now under conservation easement, in Gadsden County, Fla.

Phased conservation easement donations continued on some familiar landmark properties.

In Leon County, Jim Dahl and his family donated a third-phase conservation easement on River Ridge. This donation connects the previous Gardendale and Phase II tracts, bringing the total River Ridge conserved land to 1,920 acres. This is a keystone property that protects riverine forested floodplain and forested wetlands that buffer over 2.3 miles of the Ochlockonee River.

Finally, Tall Timbers received another donation from Daphne and Marty Wood for their Wood Associates property in Thomas County. This conservation easement protects scenic rural working lands near the Georgia-Florida border. With this easement, Mrs. Wood and her family have donated over 8,841 acres in a series of conservation easements to Tall Timbers – the most of any donor to date, reflecting the deep-seated commitment of this family to save the Red Hills.

Beyond donated easements, Tall Timbers also received three islands in Lake Iamonia via donation. Andy Smith donated Lake Iamonia Island #10, and the Lou Hill family donated Lake Iamonia Islands #20 and #30. Now Tall Timbers protects 12 islands in the largest lake in Leon County. The islands are rich in natural and archaeological resources.

Private landowners and Tall Timbers have now saved and steward over 158,000 acres of conservation easement land and fee properties in our region.



An immature great egret sitting on its nest on River Ridge Phase III.

2020 YEAR IN REVIEW

- » Tall Timbers received its second national Land Trust Accreditation renewal.
- » Succeeded in efforts to keep the Suncoast Connector toll road out of the Red Hills.
- » Awarded \$7 million Regional Conservation Partnership Program grant. These funds will be used for land stewardship management and permanent land conservation transactions in the St. Marks and Aucilla river watersheds.
- » Awarded \$1.6 million Gulf Environmental Benefit Fund grant from National Fish and Wildlife Foundation for a purchase conservation easement on an 1,800-acre internationally significant tract on the Aucilla and Wacissa rivers.
- » Closed on seven donated easement transactions and two fee land acquisitions. Now, 158,483 acres are permanently protected by Tall Timbers via donated easements and fee properties.
- » Hosted the third Red Hills Fire Festival at Tall Timbers, with nearly 40 partner organizations and attended by over 1,600 guests.
- » Worked with Georgia conservation organizations to successfully lobby for Georgia Outdoor Stewardship Program funding. The program funds land conservation and public recreation.
- » Worked in coordination with several Red Hills communities developing local policies to mitigate impacts to rural lands from utility-scale solar facilities.
- » Conducted 119 conservation easement monitoring visits and 400 hours of stewardship services to easement landowners, which included deer herd camera surveys, spring whistle counts, fall covey counts, and habitat management consultation.
- » Completed amphibian surveys on 11 properties in 136 wetlands, capturing 16 species and 12,768 individuals.
- » Completed a \$28,000 wetland restoration on Livingston Place in Jefferson County, Fla.
- » Finished the \$2.3 million restoration of the historic Livingston Place Main House, funded in part by the Florida Department of State, Division of Historical Resources.

2020 SUPPORT

CELEBRATING A LIFE OUTDOORS LEIGH HASKELL PERKINS, SR. 1927-2021

On May 7, 2021, the Tall Timbers and the Red Hills community said goodbye to a friend, fellow outdoorsman, and benefactor. After a period of declining health, Leigh Haskell Perkins, Sr. passed away at his Mays Pond property in Monticello, FL. He was ninety-three.

The man affectionately known as LHP has been lauded for his business acumen, notably for his work growing The Orvis Company, a Vermont fishing tackle manufacturer that he bought in 1965, into a definitive outdoor brand that is now in its third generation of family leadership. He attended to, and took great pride in, the success of this business, but his greater personal satisfaction was likely found in the hours he spent in the uplands and wetlands with a shotgun in hand, or stalking riverbanks and ocean flats with a fly rod. Even into his 90s, LHP managed to either fish or hunt 250 days a year; his curiosity in and passion for the natural world never waned, and likely grew stronger with every passing year. To the end, Leigh remained grateful for the life he lived. He was always quick to admit *"no one ever feels sorry for LHP... and they shouldn't!"*

Throughout his life, LHP was a champion of conservation, and one who shouldered the responsibility of protecting those resources that served both his business and his pleasure. He leveraged his business savvy and "cut to the chase" approach to organizational development to benefit the dozens of conservation organizations that he served over the course of his lifetime.

Leigh was an original supporter of the Red Hills Conservation Association, which later became the Tall Timbers Land Conservancy. He led by example, placing his beloved Mays Pond under one of the first conservation easements in the region. As a Board member (1991-2008), Leigh pushed for Tall Timbers to be "management-focused" and provided practical information that managers could use. Leigh would often say "the



"Leigh led by example. Through his love of the Red Hills and its game bird hunting traditions, he convinced plantation owners to permanently protect their land with conservation easements. Now forty percent of the region is conserved thanks to Leigh's lasting legacy."

—Kevin McGorty, Land Conservancy Director

customer is always right" and he wisely viewed land managers as our customers. This service-oriented ethos permeates the organization that Tall Timbers has become and lives on in the work of LHP's son David Perkins, who continues to serve Tall Timbers as a trustee and past Board Chair.

Leigh H. Perkins is survived by his wife, Anne, four children, eleven grandchildren, three great-grandchildren, and a string of dogs whose days beneath the pines will be bittersweet through this upcoming season. We are grateful for the wonderful life he lived.

REMEMBERING R. RANDALL ROLLINS

R. Randall Rollins, chairman of publicly traded companies Rollins, Inc., RPC, Inc., and Marine Products, Inc., as well as his family's private holdings, and who was also a dedicated supporter of Tall Timbers, passed away in August of 2020, after a short illness. Despite his legendary business reputation that included induction into the New York Stock Exchange Hall of Fame, Mr. Rollins remained rooted to the land that shaped so many of his core beliefs, including the importance of family and the value of hard work. When asked by strangers what he did for a living, Mr. Rollins often answered that he was a farmer.

Growing up in rural North Georgia, Mr. Rollins recalled quail hunting on their family farm with his own father from a very early age in the years following the Great Depression. It was that connection between family and the land that Mr. Rollins carried with him throughout his life as the family's ranching, farming and sporting properties grew over time. One of his dearest treasures was the time he spent with his wife, children and grandchildren quail hunting in Florida and Texas, on courses laid out by Mr. Rollins himself. As he described it, "these places are really a way for our family to stay connected, to the land and to each other."

As with virtually every aspect of his life, Mr. Rollins' relentless pursuit of improvement led him to Tall Timbers' research on quail habitat and population restoration. He was a staunch believer in data driven results and best practices management to improve the Rollins family's own properties, even to the point of suggesting specific research projects on occasion. His support of Tall Timbers helped those and many other research projects become a reality.

Even into his ninth decade, Mr. Rollins was determined to conserve and enhance the land, not for himself, but because those efforts would be enjoyed by his children, grandchildren and beyond. He implemented habitat restoration on thousands of acres of land that would otherwise be lost to sprawl and over-development. His hope was, like the palmettos and the pines, the memories that his family made would take root and bring them together through their common love of the land and for each other. He will be greatly missed by everyone here at Tall Timbers.



HONOR & MEMORIAL GIVING

HONORARIUMS

Mr. Bernard C. Baldwin III in honor of Susan and John Mullins
Ms. Gloria Barber in honor of J. T. Ragans
Mr. and Mrs. Edward A. Davis Jr. in honor of Kevin McGorty, The Land Conservancy Staff and Charles D. Olson, Architect
Mr. Douglas Lurie in honor of Jeremiah Cates
Mr. and Mrs. Roy McCraw in honor of Tom Rankin
John and Susan Mullin Fund in honor of Clay Sisson
Mrs. Beckie Preston in honor of Cliff Preston
Mr. and Mrs. Larry A. Sellars in honor of Lane Green
Mr. Robert M. Trulock in honor of Hank Johns
Mr. and Mrs. Jonathan White in honor of Joe W. Rogers Jr. & Philip C. Watt

MEMORIALS

Dr. and Mrs. J. Galt Allee in memory of Governor Wayne Mixson
Mr. and Mrs. C. Ray Bennett in memory of Paul Hines Trulock III
Mr. and Mrs. Don E. Chandler in memory of Paul Hines Trulock III
Mr. and Mrs. Craig Chapman in memory of Paul Hines Trulock III
Ms. Callie DeHaven in memory of Helen B. Adams
Mr. Elbridge T. Gerry Jr. in memory of Kate Ireland
Ms. Margaret Hutzler in memory of Paul Hines Trulock III
Mr. Michael Hill in memory of Stella Hill
Mr. and Mrs. Bernie Hyde in memory of Peggy Post
Mr. Hank Johns in memory of Paul Hines Trulock III
Mr. Hank Johns in memory of Jay Harbert
Mr. Douglas Lurie in memory of Morris Glen Griffin
Mr. Douglas Lurie in memory of William Mudge Lee
Mr. Douglas Lurie in memory of Dr. James Walker Jacob III
Estate gift of Elizabeth F. O'Toole benefitting Tall Timbers
Mr. and Mrs. David C. Scott in memory of Dub Stearn
Mr. Robert M. Trulock in memory of G. Mayo Livingston
Mr. John S. Wise in memory of Henry A. Wise V
Mr. Gerald R. Wolsfelt in memory of M.A. Victoria Chubb Wolsfelt

2020 SUPPORT

TALL TIMBERS FOUNDATION

The Tall Timbers Foundation manages the Tall Timbers Endowment Funds, those long-term assets that help fund research, conservation and support programs at Tall Timbers.

TALL TIMBERS FOUNDATION ENDOWMENT FUNDS

- » Albany Quail Endowment
- » Bird Window Endowment
- » Chuck Ribelin Brood Ecology Research Fellowship
- » Clifton J. Bailey Endowment
- » Corbett Fire Endowment
- » Livingston Place Endowment
- » Forestry Endowment
- » Gerry Game Bird Endowment
- » General Operating Endowment
- » Land Conservancy Endowment
- » Red Hills Land Conservation Opportunity Fund
- » Tall Timbers Land Conservancy Stewardship Fund
- » Western Pineywoods Quail Endowment
- » Wade Tract Endowment
- » Wildlife Research Endowment

ENDOWMENT DONORS

ALBANY QUAIL ENDOWMENT

Mr. Robert G. Bearden Jr.
Mr. and Mrs. William Becker
Mr. James E. Butler Jr.
Pamela and Richard T. Burke
Mr. Benny Cain, CEC Georgia Properties
Mr. John P. Darnall III
Mr. and Mrs. Joseph H. Davenport III
Doe Run Plantation
Mr. and Mrs. Lawrence Flinn Jr.
Libba and Frank Foley
Mr. and Mrs. T. Michael Goodrich
Mr. and Mrs. Tim Hall
Mr. Hank Johns
Jones Family Fund
Richard King Mellon Foundation
Mr. and Mrs. Witt Stephens Jr.
Tall Timbers Research
Tarva Plantation Partners
Mr. Remy W. Trafelet
Mr. Robert M. Trulock
Turner Foundation
Mr. and Mrs. Ted Williams
Mr. Bryan Willis

CORBETT FIRE ENDOWMENT

Mr. David D. Perkins and
Mrs. Nancy Mackinnon

RED HILLS STEWARDSHIP ENDOWMENT

Mr. and Mrs. Richard A. Corbett,
Pinckney Hill Plantation
Mr. Chad Gunter, Flint River Place
Mr. and Mrs. Gerry W. Hall,
Braewood
Mr. and Mrs. Joseph C. Harvard,
Harvard Tract
Mr. Joseph K. Lopez, Fort Hill
Farms
Mr. Richman Margeson, Margeson
Farms
Dr. and Mrs. Jimmy F. Maxwell,
Maxwell Heritage Farms
Dr. William L. Tietjen, Tietjen Tract
Mr. and Mrs. C. Martin Wood III,
Live Oak Plantation

RED HILL LAND CONSERVATION OPPORTUNITY FUND

Mr. and Mrs. Thomas S. Roth

WESTERN PINEY WOODS QUAIL ENDOWMENT

Mr. Chuck Ribelin

WADE TRACT ENDOWMENT

Mr. and Mrs. Charles M. Chapin

Tall Timbers Remembers these Devoted Friends and Supporters who Recently Passed

William Mudge Lee
George Mayo Livingston Jr.

Cathy Mooney
Ben "Burke" Wall

ALBANY QUAIL ENDOWMENT

Thanks to an abundance of landowner and community support, the Albany Quail Endowment goal of \$3 million was reached in record time to endow the director's position for the Albany Quail Project. By achieving this endowment goal, donors have ensured that Tall Timbers can support a permanent director level position in the Albany area, who will continue to provide critical land stewardship support to landowners and managers alike.

The Richard King Mellon Foundation provided a lead challenge gift for the endowment. With this amazing opportunity, landowners from the Albany area and beyond generously contributed to meet the match.

Thank you to everyone who helped make the Albany Quail Endowment a reality. Your generosity will carry forward the strong tradition of pragmatic, science-based land management guidance that has made the Albany area a premier location for wild bobwhite quail conservation.

"I am humbled and eternally grateful to the generous landowners who contributed. This project has been my life's work, so it gives me great pleasure to know the properties in the Albany area will continue to get the kind of attention and service they deserve." Clay Sisson

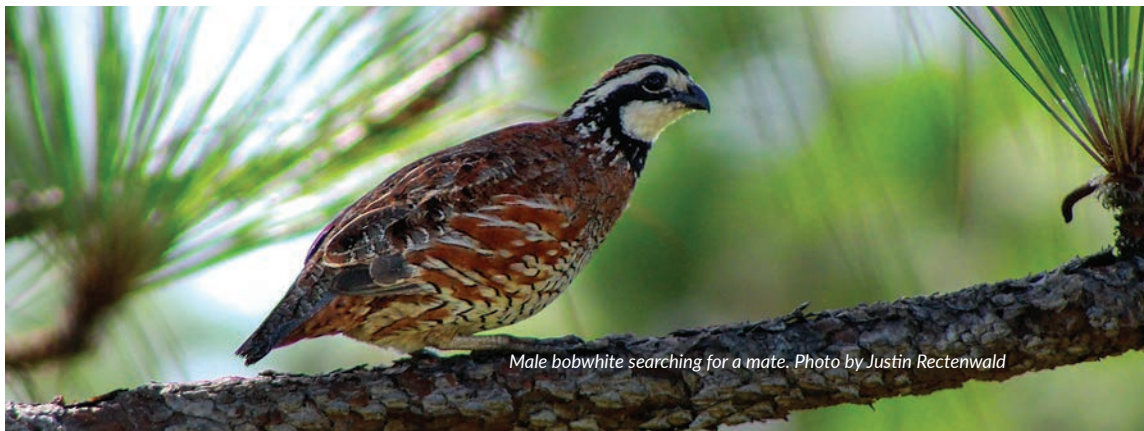


Remembering Richard P. Mellon

Richard (Dick) Mellon passed away on July 27, 2020. Dick was born on May 19, 1939 and was the eldest son of the late Gen. Richard King Mellon and Constance Prosser Mellon—passionate conservationists who established the Pittsburgh-based Richard King Mellon Foundation. He served nearly half a century on the board of the Richard King Mellon Foundation and more than a quarter-century as its Chairman before his retirement. The current Foundation director stated in their remembrance, “The Foundation, under the leadership of Richard P. Mellon and his brother Seward Prosser Mellon, and continuing now under the current board, has conserved 4.5 million acres of land in all 50 states. These are some of the most environmentally precious lands in our nation.”

Dick Mellon was an avid outdoorsman and conservationist who had an enduring love for the natural environment. In 1992, Dick and his brother Prosser were the founders and original benefactors of what became the Albany Quail Project at Tall Timbers, thanks to a grant from their R. K. Mellon Family Foundation. Their property in Georgia (Pineland Plantation) has been the headquarters for the project and the primary field site since the inception of the Albany Quail Project, now in its 30th nesting season monitoring the quail hatch in the Albany Area.

Clay Sisson, the director of the Albany Quail Project shared, “The impact Dick Mellon and the entire Mellon family and organization have had on wild quail management is significant, and will continue to be felt for some time as the Richard King Mellon Foundation recently made the lead gift on a successful campaign to endow the Albany Quail Project Directors position. Those of us here lucky enough to have known him and seen him around at Pineland will miss him dearly, and are proud to honor his contribution to quail conservation.”



Male bobwhite searching for a mate. Photo by Justin Rectenwald

KATE IRELAND AUCTION

Our 23rd Annual Auction was a virtual event in 2020. But, it still provided competitive bidding for world-class art, unparalleled hunting and fishing opportunities, and a Beretta Custom SL3 Field Gun with original art by C. D. Clarke and a full fitting by Rich Cole of Cole Fine Guns and Gunsmithing. We greatly appreciate our sponsors.

KATE IRELAND SPONSORS

Mr. and Mrs. Richard A. Corbett
George H. Dunklin Jr. Family Foundation
Four Oaks Plantation
Mr. and Mrs. Steve Hufstetler
Kate Ireland Foundation
Dr. and Mrs. George W. Simmons, North Florida Animal Hospital
Mr. and Mrs. George C. Watkins

BOBWHITE QUAIL SPONSORS

Ashley HomeStore
Benners Contracting
Mr. and Mrs. Robert H. Kirby
Mr. and Mrs. Robert Nunnally
The Parker Poe Charitable Trust

LONGLEAF SPONSORS

Cole Fine Guns and Gunsmithing
Shooting Sportsman
Turner's Creek and Bombay Hook Farms

RED HILLS SPONSORS

Benson's Heating and Air Conditioning
Mr. and Mrs. Chas H. Cannon
Mr. and Mrs. Charles M. Chapin
Childers Construction

Mr. and Mrs. Edward A. Davis Jr.
Dr. and Mrs. Jerry G. Ford
Mr. and Mrs. Redmond S. Ingalls
Jon Kohler & Associates
Keith McNeill Plumbing
Lanigan & Associates P.C.
Southwest Georgia Farm Credit
The Katherine and Samuel Scovil Charitable Fund
Thomas County Federal Bank
Thomasville Animal Hospital
Mr. and Mrs. C. Martin Wood III

WIREGRASS SPONSORS

Mr. and Mrs. Warren Bicknell III
Dr. John B. Davis Jr.
Fontaine Maury Brand Design
Hancock Whitney
Mr. and Mrs. H. Don Horne
Hurst Boiler & Welding Co.
Mr. and Mrs. Michael Ledyard
Mr. and Mrs. Jeffrey M. Nielsen
Southern Home Consultants
Shaffield Building Specialties
Thomasville National Bank
Jonathan Vines, Landscape Architect
Wiregrass Electric

2020 SUPPORT

TALL TIMBERS SOCIETY

Tall Timbers Society members are friends who make a significant and sustaining impact on our ability to accomplish our mission through their generous cumulative annual giving.

KATE IRELAND SOCIETY \$500,000 - \$1,000,000

Anonymous
Anonymous
Anonymous
The Ma-Ran Foundation
Richard King Mellon Foundation
Mr. Chuck Ribelin
The Gary W. Rollins Foundation

HENRY BEADEL SOCIETY \$100,000 - \$499,999

Anonymous
Mr. Robert G. Bearden Jr.
Mr. James E. Butler Jr.
Mr. and Mrs. Richard A. Corbett
Dahl Family Foundation
Mr. and Mrs. Lawrence Flinn Jr.
Libba and Frank Foley
The Louise H. and David S. Ingalls Foundation
The Orton Foundation
The Perkins Charitable Foundation
Mr. and Mrs. Witt Stephens Jr.
The William Stamps Farish Fund
Mr. and Mrs. C. Martin Wood III

ED KOMAREK SOCIETY \$25,000 - \$99,999

Mrs. Kathy R. Archibald
The Archibald Foundation
Mr. Lowry Baldwin and Mr. Keenan Baldwin
Bessemer National Gift Fund

Pamela and Richard T. Burke
Mr. Gregory Callimanopulos
Mr. and Mrs. Russell P. Chubb
Mrs. Robert P. Crozer
Mr. and Mrs. William F. D'Alonzo
Mr. and Mrs. Joseph H. Davenport III
Foundation for the Carolinas, Tom and Kathy Ewing Fund
Firman Fund
Four Oaks Plantation
Mr. and Mrs. T. Michael Goodrich
Mr. Russell Gordy
Mr. and Mrs. Tim Hall
Mr. Curt Korzan
Mr. Rick B. Leverich and Ms. Sheree Lucero
Mr. Joseph K. Lopez, Fort Hill Farms
Nilo Plantation
Mr. and Mrs. Robert Nunnally
Mr. David D. Perkins and Mrs. Nancy Mackinnon
Park Cities Quail Coalition
Mr. and Mrs. Tom L. Rankin
Mr. and Mrs. Samuel Scovil
Dr. and Mrs. George W. Simmons
Mr. and Mrs. Kevin Stump
Tarva Plantation Partners
Mr. Remy W. Trafelet
Mr. and Mrs. Russell Turner
Turner Foundation

Mr. and Mrs. George C. Watkins
William Howard Flowers Jr. Foundation

HERBERT STODDARD SOCIETY \$10,000 - \$24,999

Anonymous
Major & Arroll, LLC
Mr. John D. Baker II
Mr. and Mrs. William Becker
Ms. Wendy H. Bicknell
Mr. Benny Cain, CEC Georgia Properties
Mr. and Mrs. Charles M. Chapin
Mr. Rich Cole
Mr. and Mrs. James H. Dahl
Mr. and Mrs. Edward A. Davis Jr.
George H. Dunklin Jr. Family Foundation
Mr. Kirkman Finlay
The Margie and Sam Gray Family Fund
Mr. and Mrs. David F. Grohne
Mr. Chad Gunter, Flint River Place
Mr. and Mrs. Tom Hamilton
Mr. and Mrs. Raymond J. Harbert
Mr. and Mrs. Steve Hufstetler
Mr. and Mrs. G. Watts Humphrey Jr.
Jones Family Fund
The Thomas M. Kirbo and Irene B. Kirbo Charitable Foundation
Ben and Nocy Livingston Fund
Mr. Richman Margeson, Margeson Farms
Dr. and Mrs. Jimmy F. Maxwell, Maxwell Heritage Farms
R. K. Mellon Family Foundation
Merrily Plantation
John and Susan Mullin Fund



EPA's unmanned ground vehicle samples a variety of smoke emissions on a DOD funded collaborative research burn at Tall Timbers in February. Photo by Wade Ross.

Mr. Edwin R. Neel
Mr. and Mrs. Leigh H. Perkins Jr.
Mr. and Mrs. Randy Ringhaver
Mrs. Maury F. Shields
Southwest Georgia Quail Forever
Mr. and Mrs. Warren Stephens
Mr. and Mrs. Timothy P. Sullivan
Longleaf Charitable Fund, Mr. and Mrs. Charles M. Tarver
The Uible-Morris Family Foundation, Mr. William H. Morris
Wade Research Foundation
Mr. Ben Wall
Mr. and Mrs. Virgil R. Williams
Williams Family Foundation
Conservation & Preservation Fund

TALL TIMBERS MEMBERS

Annual membership gifts help support the day-to-day operations of Tall Timbers and are the lifeblood of our organization.

LONGLEAF: \$25,000 - \$49,999

Mr. and Mrs. Richard A. Corbett
Mr. and Mrs. Russell P. Chubb
The Perkins Charitable Foundation

WIREGRASS: \$10,000 - \$24,999

Anonymous
Ms. Wendy H. Bicknell
The Thomas M. Kirbo and Irene B. Kirbo Charitable Foundation
Mr. David D. Perkins and Mrs. Nancy Mackinnon
Mr. and Mrs. Leigh H. Perkins Jr.
Mr. and Mrs. Samuel Scovil
Mr. and Mrs. Kevin Stump
Tim and Wendy Sullivan Charitable Fund

BENEFACTOR: \$5,000 - \$9,999

The Alexander Foundation
The Theo B. Bean Foundation
Mr. and Mrs. Charles M. Chapin
Samuel B. Kellett Sr. Foundation
Mr. and Mrs. Gordon Mooney
Mr. and Mrs. Robert Nunnally
Diane W. Parker Charitable Fund
Mr. and Mrs. Tom L. Rankin
The Katherine and Samuel Scovil Charitable Fund
Mr. and Mrs. Hewitt B. Shaw
Samuel E. Upchurch Jr. Charitable Foundation

PATRON: \$2,500 - \$4,999

Mrs. Kathy R. Archibald
Mr. and Mrs. C. DuBose Ausley

Mr. John D. Baker II
Mr. and Mrs. James K. Dobbs III
The Gerry-Corbett Foundation,
Mr. William F. Gerry

Elizabeth Ring Mather & William Gwinn Mather Fund,
Mr. James D. Ireland IV

Mr. and Mrs. Redmond S. Ingalls
The Robert L. Ireland Jr. Fund
Mr. and Mrs. Robert H. Kirby
Mr. and Mrs. Tom Ratchford
Dr. and Mrs. David Saint
Dr. and Mrs. Charles R. Sanders
Mr. and Mrs. Thomas V. H. Vail
Mr. and Mrs. J. Ben Watkins III

SPONSOR: \$1,000 - \$2,499

Anonymous
Mr. and Mrs. John G. Alston Sr.
Mr. and Mrs. Chas H. Cannon
Mr. and Mrs. Charles E. Commander III
Mr. and Mrs. Edward A. Davis Jr.
Mr. Thomas R. Devlin
Doe Run Plantation
Mr. Howell L. Ferguson and Dr. Sharon Maxwell-Ferguson
Mr. and Mrs. James L. Ferman Jr.
Mr. Trey Googe
Mr. Samuel S. Gottwald
Mr. and Mrs. Kenneth D. Haddad
Mr. Edmund H. Hardy
Dr. and Mrs. Louis Hill Jr.
Mr. and Mrs. G. Watts Humphrey Jr.

Mr. William J. Hurst
The Pegasus Foundation, Mr. and Mrs. Melville H. Ireland Jr.
Mr. John D. Johns
Ms. Connie S. Kummer
Mr. and Mrs. John B. Long II
Mr. Ambrose Monell
Mr. Everall D. Perkins
Mr. and Mrs. C. Mark Pirrung
Ellery and Robin Sedgwick Fund,
Dr. and Mrs. Ellery Sedgwick
Sedgwick Family Fund,
Mrs. Irene S. Briedis
Mr. and Mrs. Wallace Edward Sholar Jr.
Dr. and Mrs. George W. Simmons
Mr. and Mrs. Taylor W. Smith
Southern Pines Plantations
Mrs. Sallie P. Sullivan
Mr. Tyler Wallace
Mrs. Virginia Wetherell Scott
Mr. and Mrs. Jonathan White
Mr. and Mrs. C. Martin Wood III
Mr. Mark A. Worthey
SUSTAINING: \$500 - \$999
Dr. and Mrs. J. Galt Allee
Mr. and Dr. Ken Allman
Mr. Lamar Q. Ball III
Mr. C. Victor Beadles
Mr. Jeff Bean
Mr. and Mrs. John M. Carlton Jr.
Mr. and Mrs. Don E. Chandler
Mr. Charlton H. Chatfield
Dr. John B. Davis Jr.
Mr. Lewis Dunn
Mr. William A. DuPre IV
Dr. and Mrs. Jerry G. Ford

Mr. and Mrs. Kenneth R. Hart
Mr. Nathan V. Hendricks III
Mr. and Mrs. H. Don Horne
The Pegasus Foundation,
Mr. Peter M. Ireland
Mr. and Mrs. Rhett Johnson
Mr. and Mrs. Harry T. Jones III
Mr. and Mrs. B. Wheat Kirbo III
Mr. John E. Ladson III
Mr. and Mrs. Rob Langford
Mr. Ed Loughlin Jr.
Mr. and Mrs. Roy McCraw
MLM Private Forester
Mr. John W. Mettler III
Mr. Skip Poppell
Red Hills Spaniel Club

Dr. and Mrs. John B. Reynolds
Mr. Sonny Roberts
Ellery and Robin Sedgwick Fund,
Mr. and Mrs. Ellery W. Sedgwick
Dr. Orson and Eleanor Smith
The Proctor Dealerships
Mr. Richard B. Wagner
Mr. and Mrs. Warren Bicknell III
Mr. Miles B. Watkins
Dr. and Mrs. Philip C. Watt
William Powell and Caren McKenzie Jones Charitable Fund
Mr. and Mrs. Blair Williams
SUPPORTING: \$250 - \$499
Mr. Bernard C. Baldwin III
Mr. and Mrs. R. C. Balfour III



A gopher tortoise burrow is being scoped with a special camera by Kelsey Hoskins, with help from Conservation Biologist Kim Sash at left. Photo by volunteer Joe Pfaller. Inset photo shows an Eastern Diamondback Rattlesnake down in a different burrow, and visible on the scope screen; the snake was sharing the burrow with a gopher tortoise. Photo by Kelsey Hoskins.

2020 SUPPORT

Members continued -

Mr. and Mrs. Sid Bigham
Mr. Guy Anglin and Ms. Jan Blue
Mr. Joseph S. Brannen
Dr. and Mrs. Clifford S. Bristol
Mr. John Sineath
Mrs. Judith O. Burgert
Mr. Robert F. Burgin III
Mr. Franklin L. Burke
Mr. and Mrs. Bob Carroll
Mr. Douglas M. Croley
Mr. Elliott Davenport Jr.
Mr. Robert H. Demere Jr.
Duckhaven Gun Club
Edwards Olson Architecture
Mr. J. Todd Ford
Mr. Jeff Alexander
Mr. Elbridge T. Gerry Jr.
Mr. and Mrs. Benson Green
Mr. George F. Grimsley
Mr. Greg Hagar
Mr. and Mrs. Harper Hanway
Dr. Robert L. Harbin
Mr. and Mrs. Michael S. Hartman
Mr. and Mrs. John T. Hiers
Mrs. Mart P. Hill
Mr. and Mrs. Sloan Howard
Mr. and Mrs. Bernie Hyde
Mr. Chuck Hunter
The Pegasus Foundation, Mr.
William L. Ireland
Mr. Hank Johns
Dr. Louis G. Lee
Love Family Foundation
Mr. Peter T. MacGaffin
Mrs. Patricia B. Manigault

Mr. and Mrs. Phillip L. Martin
Mr. and Mrs. Kevin McGorty
Mr. and Mrs. Joel Padgett
Mr. Kevin Puckett
Mr. and Mrs. James M. Robinson
Bill and David Rudd
Savannah Community Foundation,
The Critz Family Fund
Mr. James L. Schortemeyer
Mr. and Mrs. Chuck Smallwood
John and Kate Swiderski
Mr. and Mrs. Reggie Thackston
Mr. Sam B. Waddill
Mr. and Mrs. J. Otey Walker III
Mr. and Mrs. Ebe Walter
Mr. William R. Watson
Mr. Lee Whitley
Mr. and Mrs. Jerry Williamson
Mr. John S. Wise
Mr. Gerald R. Wolsfelt
CONTRIBUTING: \$125 - \$249
Mr. and Mrs. Robert W. Balfour
Mr. and Mrs. Stan Barnes
Mr. and Mrs. Douglas Beach
Mr. and Mrs. C. Duncan Beard
Mr. and Mrs. Joe Beverly
Dr. and Mrs. John A. Blackmon
Red Oaks Plantation,
Mr. George Brannen
Dr. Roland Bridges
Mr. Dana C. Bryan and
Ms. Gwendolyn B. Waldorf
Mr. and Mrs. Sandy Morehouse
Dr. J. H. Carter III
Ellen and Dan Corrie
Mr. and Mrs. James C. Crawford III

Dr. and Mrs. Gene L. Davidson
Dr. and Mrs. J. Daniel Davis
Mr. and Mrs. Walker W. Davis
Mr. and Mrs. Endicott P. Davison Jr.
Mr. and Mrs. Edward Epp
Ms. Susan M. Fitzgerald
Mr. Bobby B. Brown
Mr. and Mrs. Lane Green
Mr. and Mrs. Ralph G. Greene
Dr. and Mrs. Lynn Hagood
Mr. David H. Hardin
Mr. Peter A. Hays
Mr. and Mrs. Dennis Hiltner
Reverend David G. Hortin
Dr. H. George Jarrell Jr.
Mr. Clifford W. Johnson
Dr. Kristin E. Kentopp
Mr. Irv Kenyon
Mr. David A. Kidd
Lykes Bros
Mr. and Mrs. Eric J. McCollum
Mr. and Mrs. Ted McGraw
Mr. and Mrs. David J. Middleton
Ms. Julie H. Moore
Ms. Linda Newman
Lynn and Lucretia Norman
Mr. C. Frederick Overby
Mr. Jeffrey E. Phillips
Mr. and Mrs. Timothy B. Pirrung
Mr. Wilbur Primos
Mr. B. Quinn
Mr. Charles Redfearn
Mr. Francis P. Rentz
Mr. and Mrs. John C. Roboski
Ms. Rosalie Rodriguez



After scoping a gopher tortoise burrow on Livingston Place, Grace Toulon, shows off the gopher tortoise residing in the burrow. Her grandparents, Becky & Keith McNeill, purchased the Herping Excursion at the last Tall Timbers' Kate Ireland Auction. Photo by Kim Sash

Mr. and Mrs. Thomas S. Roth
Charles Rozier & Associates
Mr. and Mrs. David C. Scott
Mr. and Mrs. Frank Shaw
Dr. and Mrs. Terry W. Sherraden
Mr. George Skipper
Dr. Robert M. Snider
Mr. and Mrs. Robert J. Sniffen
Mr. William C. Stimmel III
Mr. Peter S. Szabo
Mr. Michael Durham Terry
Thomas Farms

Mr. Theodore F. Thomas Jr.
Dr. William L. Tietjen
Dr. Ben M. Turner
Mr. Lewis C. Tyus Jr.
Ms. Virginia A. Vail
Mr. Robert M. T. Walker
Mr. Jody Walthall and
Mrs. Donna Legare
Mr. Bill Weldon
Mr. and Mrs. Brent Widener
Woodward Family Farm
Mr. and Mrs. Geoffrey P. Young

GRANTS, JOINT VENTURES, AND COST SHARE AGREEMENTS

Grants and similar funding opportunities made up nearly 24% of our revenue in 2020, an important part of the diversified mix of sources used to fund our work.

CAPITAL CITY BANK GROUP

Fire Messaging

CORNELL LAB OF ORNITHOLOGY

Filling in Gaps Between People and Birds

COLORADO STATE UNIVERSITY

Characterizing multiscale feedbacks between forest structure, fire behavior and effects

GEORGIA DEPARTMENT OF NATURAL RESOURCES

Survey in SW Georgia for priority amphibians and gopher tortoises

GEORGIA ORNITHOLOGICAL SOCIETY

Bill Terrel Grant-Red Cockaded Woodpeckers

GEORGIA POWER

Land Conservancy

Mississippi State University

Fire Effects in Gulf of Mexico marshes

CURTIS & EDITH MUNSON FOUNDATION

Aucilla Watershed and TTR Land Management

NATIONAL AERONAUTICS AND SPACE ADMINISTRATION

COVID-19 Lockdowns drive decline in active fires, increasing summer wildfire risk

NASA/FLORIDA STATE UNIVERSITY

Air quality & climate impacts of biomass burning in the SE US

Flight planning service for Fire Chem

NATIONAL INSTITUTE OF AEROSPACE

Firechem: Fuel from Below, Linking Fire

NATIONAL FISH AND WILDLIFE FOUNDATION

Expanding RCW in Georgia and Florida
Strategic Rx Burn on Private Lands

ORTON FOUNDATION

Orton Project

PARK CITIES QUAIL

Game Bird Research

PHEASANTS FOREVER

Fire Effects on Longleaf Saplings

STATE OF FLORIDA

FWC Apalachicola National Forest Translocation

Upland Ecosystem Restoration Program

SWG - Terrestrial Upland and Prescribed Fire Projects

Forest Service: LiDar 360

Prescribed Fire Refresher

Fire Messaging

UNIVERSITY OF CALIFORNIA, SAN DIEGO

Support of Multi-scale Wildland Fire Combustion Processes

US ARMY/ SERDP

Influence of Fuels

US DEPARTMENT OF AGRICULTURE

Understanding the Fluid Dynamics of Fire Behavior and Effects

NRCS: Florida Georgia Red Hills Region Pilot Project-Feral Hog

Partnering for the Advancement of Rx Fire Science across the Atlantic Coastal Plain

Co-Production of Wildland Fire Science: Models to transform

Longleaf Pine Initiative



Tall Timbers staff and Apalachee Audubon volunteers pose with Hays Cummins and Donna McCollum, owners of a property protected through a Tall Timbers' conservation easement, during a visit to their property and nearby land as part of the Cornell Lab of Ornithology Land Trust Grant project. Photo by Peter Kleinhenz

Multi-Scale Wildland Fire Combustion Processes

Additional Modeling & a Synthesis of Ecosystem Process Model Performance Comparisons

Enhancing Drone-Based Firing Operations, Training, and Safety through advanced fire behavior modeling and visualization techniques

NRCS: Restoring Fire to benefit fire-dependent wildlife species

Southern Fire Exchange-Putting Fire Science of the Ground

Understanding Fire Response to Spatial Variations in Vegetation Distribution and Wind

Wildland Fire Research to improve military land use efficiency

Beyond Burning: Constructing a Mechanistic Understanding of Prescribed Fire in the Longleaf Pine Ecosystem

Rx Science and Modeling Efforts

Fire and Smoke model evaluation experiment

Collaborative Prescribed Fire Training

Incorporating 3D Vegetation into Fire Modeling and Ecosystem Processes

US DEPARTMENT OF INTERIOR/ FISH & WILDLIFE SERVICE

Private Lands RX Training

Amphibian Breeding Pond Restoration

Restoration of Fire-dependent habitats in St. Sebastian River Preserve State Park

US ENDOWMENT FOR FORESTRY AND COMMUNITIES

Aucilla Watershed Conservation Initiative

NRCS SE Fire Map

WADE RESEARCH FOUNDATION

Reptile & Amphibian Work on Greenwood

Tree & Lidar Measures for Wade Tract

WESTERVELT ECOLOGICAL SERVICES

Pensacola Bay

St. Marks Mitigation



Fire science biologist Scott Pokswinski checks monitor for the SERDP influence of fuels work at the Osceola National Forest. Photo by Morgan Varner

2020 SUPPORT

Program-Specific Giving

LAND CONSERVANCY

CONSERVATION EASEMENT CONTRIBUTIONS

Mr. James H. Dahl, River Ridge Phase III

Mr. Jerry W. Fritz, Fritz Tract

Mr. James Curtis Morris II and Mr. Kyle Cooper, Longhorn Land Investments

Mr. and Mrs. Thomas S. Roth, Spring Canyon

Dr. and Mrs. William L. Tietjen, Tietjen Tract

Mr. and Mrs. Miles B. Watkins, Wybulu Farm & Timber

Mr. and Mrs. C. Martin Wood III, Wood Associates

2020 LAND GIFTS

Mr. Andrew Smith, Lake Iamonia Island #10

Dr. and Mrs. Lou Hill and Family, Lake Iamonia Islands #20 & #30

GENERAL PROGRAM SUPPORT TOP DONORS

The Archibald Foundation

Mr. and Mrs. Robert Nunnally

The Perkins Charitable Foundation

Mrs. Sallie P. Sullivan

Turner Foundation

Mr. and Mrs. George C. Watkins

GENERAL CONTRIBUTORS

Anonymous

Ms. Callie DeHaven

Estate of Elizabeth F. O'Toole

Grady County Board of Commissioners

Mr. and Mrs. Lane Green

Mr. and Mrs. Kenneth D. Haddad

Ms. Caroline Makepeace

Mrs. Beckie Preston

Mr. and Mrs. Thomas S. Roth

Mr. Stephen Swartz

Dr. and Mrs. William L. Tietjen

Mr. and Mrs. Brent Widener

RED HILLS PLANNING PROGRAM

William Howard Flowers Jr. Foundation

Red Hills Defense Fund:

Mrs. Robert P. Crozer

Mrs. Maury F. Shields

Mr. and Mrs. C. Martin Wood III

William Howard Flowers Jr. Foundation

RED HILLS AWARENESS CAMPAIGN

Mr. Rufus Guice

The Longleaf Alliance

Mr. and Mrs. Thomas S. Roth

AUCILLA WATERSHED PROJECT

The Curtis and Edith Munson Foundation



ROSE RODRIGUEZ

Board Trustee Virginia Wetherell Scott with some of the furnishings donated for the main house at Livingston Place (LP). She and LP committee members Rozzie Davis and Daphne Wood have worked tirelessly to decorate the many rooms with period appropriate items.

LIVINGSTON PLACE

LIVINGSTON PLACE RESEARCH AND MANAGEMENT

Mr. John D. Baker II

Mr. Bernard C. Baldwin III

Ben and Necy Livingston Fund

Doyle Hancock & Sons Construction

Four Oaks Plantation

Mr. Greg Gaston

Mr. William W. Goodrich

Goodrich Foundation

Mr. John D. Gottwald

Hickory Head, Mr. and Mrs. Gordon Mooney

John and Susan Mullin Fund

Mr. Alex Mock

Mr. Everall D. Perkins

Mr. and Mrs. Donald Portwood

Southwest Georgia Quail Forever

Mr. and Mrs. Warren Stephens

Mr. Dave Tavalon

The Grayson and Susan Hall Family Charitable Fund

Mr. and Mrs. Virgil R. Williams

Mr. Delos H. Yancey III

LIVINGSTON PLACE HISTORIC HOME RESTORATION

The State of Florida, Florida Department of State, Division of Historical Resources, assisted by the Florida Historical Commission

The Uible-Morris Family Foundation, Mr. William H. Morris

Mr. and Mrs. C. Martin Wood III

LIVINGSTON PLACE HISTORICAL EXHIBIT

Mr. and Mrs. Edward A. Davis Jr.

IN KIND GIFTS

Edward Olson Architecture

Mr. and Mrs. Edward A. Davis Jr.

Mr. and Mrs. William W. Stahl Jr.

Mrs. Virginia Wetherell Scott



Daphne Flowers Wood and her friends discovered 16 species of butterflies within 100 yards of her house at Live Oak Plantation. Daphne purchased the Butterfly Excursion with Research Associate Dave McElveen at a past Tall Timbers' auction. From left to right: Leslie Ballenger, Daphne Flowers Wood, Gage Ogden, Kathy Barnett and Cathy Taber. Photo by Dave McElveen

GAME BIRD PROGRAMS

CAROLINA REGIONAL QUAIL PROGRAM

Mr. Riley Boykin and Ms. Tammy L. Smith
 Mr. Sam Bratton
 Mr. William C. Brookshire Jr.
 Mr. Ansel C. Bunch Jr.
 Dr. and Mrs. William Cain Jr.
 Mr. Gregory Callimanopulos
 Canfor Southern Pine
 Mr. Joseph D. Clark
 Mr. and Mrs. James C. Crawford III
 Mr. and Mrs. Stephen M. Creech
 Mr. Gary W. Dietrich
 Mr. David D. Douglas
 Etowah Group
 Faulconer Construction Company
 Mr. Kirkman Finlay III
 Foundation for the Carolinas,
 Tom and Kathy Ewing Fund
 Mr. James L. Gillis IV
 Dr. Bryan Green
 Mr. Edmund H. Hardy
 Mr. Charles G. Lane
 Mr. Mike Lockhart
 Mr. William A. Martin
 Mr. H. Gordon Maxwell
 Mr. George W. Mozingo III
 Mr. Jesse L. Petrea
 Queensborough National Bank &
 Trust Company
 Mr. Alfred F. Ritter Jr.
 Robin Hollow
 Mr. and Mrs. M. Toddy Smith

Southern Pines Plantations
 Mr. and Mrs. Lewis M. Stewart Jr.
 The David Belk Cannon
 Foundation, Dr. Richard Rankin
 Paschal Family Charitable Fund
 Mr. Ben Wall and Mr. Burke Wall
 Mr. Robert F. Wright Jr.

MID-ATLANTIC QUAIL

Mr. and Mrs. William F. D'Alonzo

CENTRAL FLORIDA RANGELAND QUAIL PROGRAM

Anonymous
 Mr. Lowry Baldwin and Mr. Keenan
 Baldwin
 The Ma-Ran Foundation
 The Gary W. Rollins Foundation

PAMELA H. FIRMAN RED HILLS QUAIL MANAGEMENT RESEARCH

Mr. and Mrs. C. DuBose Ausley
 Mr. Bernard C. Baldwin III
 Ms. Wendy H. Bicknell
 Mr. L. Hardwick Caldwell
 Mr. and Mrs. Charles M. Chapin
 Mr. and Mrs. Richard A. Corbett
 Mr. and Mrs. James H. Dahl
 Firman Fund
 Mr. George F. Grimsley
 Mr. and Mrs. David F. Grohne
 Mr. William J. Hurst
 Ms. Margaret Hutzell
 The Pegasus Foundation, Mr. and
 Mrs. Melville H. Ireland Jr.
 Dr. H. George Jarrell Jr.

Mr. and Mrs. Robert H. Kirby
 Mr. Rick B. Leverich and
 Ms. Sheree Lucero
 Mr. and Mrs. Ted McGraw
 Mr. Gordon Mooney
 Mr. Leigh Oliva
 Mr. and Mrs. Carl Pennington Jr.
 Mr. David D. Perkins and
 Mrs. Nancy Mackinnon
 Mr. and Mrs. Tom L. Rankin
 Mr. Chuck Ribelin
 Mr. and Mrs. Randy Ringhaver
 Mr. and Mrs. Robert J. Sniffen
 South Jersey Quail Project
 Mr. Vic Venters
 Mr. and Mrs. George C. Watkins

ALBANY QUAIL PROJECT

Anonymous
 Mr. Richard Burke
 Mr. Benny Cain
 Mr. and Mrs. Joseph H. Davenport III
 Mr. and Mrs. Joseph H. Davenport IV
 Dilworth Development
 Doe Run Plantation
 Mr. Robert S. Doochin
 Mr. and Mrs. Lawrence Flinn Jr.
 Franklin Family Farm
 The Margie and Sam Gray Family Fund
 Mr. Benjy Griffith, Senah Plantation
 Mr. and Mrs. Raymond J. Harbert
 Mr. John Izard
 Mr. Hank Johns
 Mr. Steven D. Johnson
 Mr. and Mrs. Keith Kelly



Albany Quail Project Director Clay Sisson, at right, and biologist Justin Rectenwald tag a record-breaking cotton rat in August 2020, on the main study area in Albany, as part of the annual small mammal trapping effort. Photo courtesy of Justin Rectenwald

Longleaf Charitable Fund,
 Mr. and Mrs. Charles M. Tarver
 Mr. Ted Turner, Nonami Plantation
 Mr. and Mrs. Robert Nunnally
 Mr. and Mrs. Jenks Parker
 Quick Trigger
 R.K. Mellon Family Foundation
 Mr. Greer Radcliff
 Mr. Robert Shaw
 Southwest Georgia Quail Forever
 Mr. and Mrs. Kevin Stump
 George P. Swift Jr. Family
 Foundation
 Tarva Plantation Partners

Mr. and Mrs. John Thompson
 Mr. Lewis C. Tyus Jr.
 Mr. and Mrs. Thomas V.H. Vail
 Mr. Lee Walters
 William Howard Flowers Jr.
 Foundation
 Mr. Ted Williams, Nilo Plantation
**WESTERN PINEYWOODS QUAIL
PROGRAM**
 Park Cities Quail Coalition
 Mr. Chuck Ribelin

2020 SUPPORT

2020 GEORGIA-FLORIDA TURKEY INVITATIONAL

LONG BEARD

Williams & Parker Family

GOBBLER

North Florida Animal Hospital

Parker Poe Charitable Trust

Mr. and Mrs. Tom L. Rankin

Triple Creek Farm

JAKE

Benners Contracting

Ireland Family

Jon Kohler & Associates

Teramore

Mr. and Mrs. Putt Wetherbee

Mr. and Mrs. J. Ben Watkins III

SUPPORTERS

Barnes Capital Group

Mr. Hunter Brant

Mr. and Mrs. Chas H. Cannon

Mr. Andrew Chase

Mr. and Mrs. Richard A. Corbett

Crocker Realty

Dr. John B. Davis Jr.

Mr. Stephen Demott

Mr. Shane Drew

Mr. and Mrs. Mercer Fearington Jr.

Mr. Robbie Green

Mr. Greg Hagar

Mr. and Mrs. Greg Hamil

Mr. Michael Hamil

Mr. and Mrs. Michael S. Hartman

Mr. and Mrs. Sloan Howard

Mr. Jay Kimbrel

Mr. and Mrs. B. Wheat Kirbo III

The Langdale Company

Mayhaw Plantation

Mr. Tim Miles

Ms. Knox Parker

Mr. Jonathan Roberts

Mr. and Mrs. Travis Sherman

Mr. Richard B. Wagner

Mr. Bubba White

Molly Willis Pecans

Mr. Craig E. Wolff

RESEARCH PROGRAMS

FIRE ECOLOGY

Anonymous

Ms. Wendy H. Bicknell

Mr. James Browne

Community Foundation of South Georgia, Cherokee Foundation Charitable Fund

Community Foundation of South Georgia, Beadles Charitable Fund

Mr. and Mrs. Redmond S. Ingalls

Mr. and Mrs. Robert Nunnally

Mr. William O'Laughlin

Ms. Catherine Cornelius

Dr. Stephen Conlin

Mr. James A. Cox

Mr. Robert L. Crawford

Mr. and Mrs. Edward A. Davis Jr.

Mr. and Mrs. Kenneth J. D'Loughy

Gregory and Cathy DuBois

Dr. R. Todd Engstrom

Ms. Susan M. Fitzgerald

Mrs. Judy Goldman

Mr. and Mrs. Lane Green

Dr. Sharon M. Hermann

Kim and Pierson Hill

Mr. Michael Hill

Ms. Faith Hoogs

Mrs. Lillian Hughes

Mr. and Mrs. Redmond S. Ingalls

Mr. Peter N. Kleinhenz

Ms. Marianne G. Korosy

Ms. Lane Mathews

Mr. Walter Matia

Mr. John McFadden

Mrs. Diane Williams Parker

Mr. and Mrs. Timothy B. Pirrung

Ms. Melissa Proctor

STODDARD BIRD LAB

Apalachee Audubon Society

The Archibald Foundation

Dr. R. Todd Engstrom

Mr. Michael Hill

The Jelks Family Foundation

Native Nurseries of Tallahassee

Sarasota Audubon Society

BIRD QUEST

Apalachee Audubon Society

Dr. and Mrs. Clifton J. Bailey

Mr. and Mrs. Warren Bicknell III

Mr. and Mrs. Charles M. Chapin



*Biologist Wilson Baker at the Wade Tract Preserve helped with the annual butterfly survey.
Photo by Dave McElveen*

Mr. and Mrs. Tom L. Rankin

Ms. Rosalie Rodriguez

Dr. and Mrs. John R. Sanders

Ms. Tamara L. Serata

Ms. Julie Sprott

Mr. and Mrs. Ebe Walter

Mr. Jody Walthall and

Mrs. Donna Legare

Mr. and Mrs. George C. Watkins

Mr. John S. Wise

Mr. and Mrs. C. Martin Wood III

WADE TRACT RESEARCH

Wade Research Foundation

WILDLAND FIRE

Blooming Grove Hunting and Fishing Club

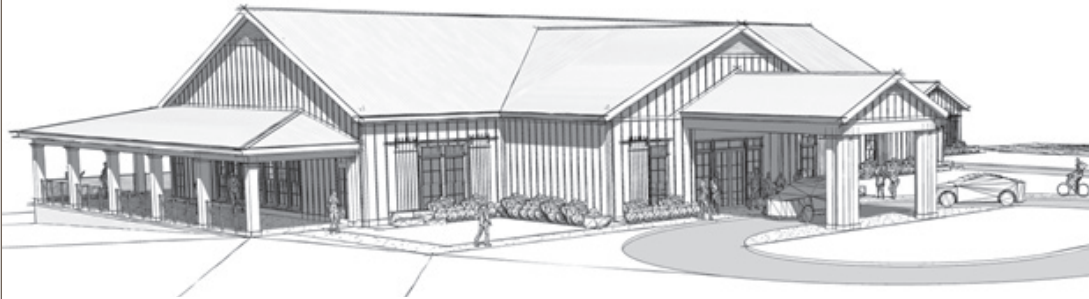
Mr. and Mrs. Richard A. Corbett

Mr. and Mrs. John T. Hiers

Mr. and Mrs. Robert H. Kirby

Ms. Katherine Willing

TALL TIMBERS CONSERVATION & EDUCATION CENTER



Tall Timbers plans to build a modern conference facility that can effectively host 400+ people with high quality audio-visual-communication technologies to enhance the scope and reach of our educational programs.

TALL TIMBERS CONSERVATION & EDUCATION CENTER

Anonymous

Dahl Family Foundation

The Louise H. and David S. Ingalls Foundation

KATE IRELAND AUCTION SPONSORS – BENEFITING THE CONSERVATION & EDUCATION CENTER

Ashley HomeStore

Benners Contracting

Mr. and Mrs. Richard A. Corbett

George H. Dunklin Jr. Family Foundation

Four Oaks Plantation

Mr. and Mrs. Steve Hufstetler

Mr. and Mrs. Robert H. Kirby

Dr. and Mrs. George W. Simmons, North Florida Animal Hospital

Mr. and Mrs. Robert Nunnally

The Parker Poe Charitable Trust

Mr. and Mrs. George C. Watkins

OTHER SUPPORT

SUNCOAST CONNECTOR TOLL ROAD REPEAL

Mr. and Mrs. Thomas A. Barron

Mr. and Mrs. Charles M. Chapin

Mr. Franklin W. Foster

Mr. and Mrs. James Groover Jr.

Mr. and Mrs. G. Watts Humphrey Jr.

Mr. and Mrs. Redmond S. Ingalls

Mr. and Mrs. Robert H. Kirby

Mr. Mitch L. McElroy, MLM Private Forester

The Leigh H. Perkins Foundation

Mr. and Mrs. Tom L. Rankin

The Katherine and Samuel Scovil Charitable Fund

Mr. and Mrs. Hewitt Shaw

Dr. and Mrs. George W. Simmons

Mr. and Mrs. Rankin M. Smith Jr.

Mr. and Mrs. Witt Stephens Jr.

Mrs. Sallie P. Sullivan

Mr. and Mrs. George C. Watkins
Williams Family Foundation
Conservation & Preservation Fund

FIRE MARKETING CAMPAIGN

Bessemer National Gift Fund

Capital City Bank Group Foundation

Mr. Thomas M. Hamilton

Mr. and Mrs. Tom L. Rankin

The Thomas M. Kirbo and Irene B. Kirbo Charitable Foundation

The Longleaf Alliance

Mr. and Mrs. J. Ben Watkins III

LAND MANAGEMENT

Mr. Randall Chase Jr.

PRIVATE LANDS-PRESCRIBED FIRE PROJECT

Mr. and Mrs. Robert Tucker Jr.

The Curtis and Edith Munson Foundation

Mr. Douglas Lurie



Private Lands Fire Initiative coordinator, John McGuire, with Major Lee Stuckey, founder of AHERO. Tall Timbers is working with AHERO to introduce veterans to prescribed burning and the restorative power of land stewardship to help build the skilled workforce needed to expand prescribed fire use. Photo courtesy of John McGuire

The Suncoast Connector Toll Road and larger M-CORES plan to build 330 miles of toll roads throughout Florida was repealed and replaced when Florida Governor Ron DeSantis signed into law Senate Bill 100.

“This is great news. I’m so thankful for the leadership Tall Timbers and other organizations (but especially TT) provided on this issue and for its continued commitment to the conservation and protection of natural resources in the Red Hills region and beyond.”

–Tracie Seale, Jefferson County Resident

2020 STAFF

WILLIAM E. PALMER, PHD

President & Chief Executive Officer

ACCOUNTING

Melissa Proctor, Controller, Chief Financial Officer
Sydney Amici, Jr. Accountant
Rosi Nichols, HR Coordinator/PR Accountant
Lillie Jefferson, Sr Accounts Payable & Purchasing Specialist
Rachelle Culpepper, Accounting Assistant
Stephen Macdonald, Bookkeeper

FACILITIES

Jennifer Roberts, Facilities Director, Executive Assistant
Jerome Golden, Facilities
Lorrie Asbell, Administrative Assistant/Receptionist
Jenny Taylor, Administrative Assistant/Receptionist
Sylvia M Cromartie, Facilities Housekeeper
Lisa Baggett, Facilities Housekeeper

DEVELOPMENT

Crystal D. Rice, Development Director
Amy Allen, Development Coordinator

COMMUNICATIONS

Brian Wiebler, Communications Director
Rose Rodriguez, Information Resources Manager
Juanita Whiddon, P/T Archives, & Historical Resources

GEOSPATIAL LAB & INFORMATION TECHNOLOGY

Joe Noble, GIS/Information Technology Program Director
Kurt Haffner, IT Systems Coordinator
Eli J Simonson, Geospatial Remote Sensing Specialist
Dixie Davis, Geospatial Data Base Administrator

LAND CONSERVANCY

Kevin McGorty, Director
Neil Fleckenstein, Planning Coordinator
Shane D. Wellendorf, Conservation Coordinator
Kim Sash, Conservation Biologist
Peter Kleinhenz, Aucilla Watershed Coalition Coordinator
Joshua E Webb, Conservation Stewardship Coordinator
Josh Gamblin, Conservation Stewardship Manager
Jessica Coker, Program Analyst
Brianna Bjordahl, Conservation Technician

RESEARCH ADMINISTRATION

William E. Palmer, PhD, Director of Research
J. Morgan Varner, PhD, Director of Fire Research

FIRE ECOLOGY

Kevin M. Robertson, PhD, Director, Fire Ecology Program
Cinnamon Dixon, Ecosystems Services Project Coordinator
Breanne C. Ward, Fire Ecology Biologist
Quinn A. Hiers, Fire Ecologist
Mary Armstrong, Fire Ecology Outreach Specialist
Alexis Everland, Lead Fire Ecology Research Technician
Allison Snyder, Fire Ecology Technician
Austin Dixon, Fire Science Writer

WILDLAND FIRE SCIENCE

J. Kevin Hiers, Wildland Fire Scientist
Eric Rowell, PhD, Wildland Fire Scientist
Scott Pokswinski, Research Biologist III, Prescribed Fire Science
Audrey Wilson, Fire Science Research Biologist II
Derek Wallace, Fire Science Research Assist/Biologist II
Robert Bale, Sr. Wildland Fire Specialist
Maris Gabliks, Sr. Wildland Fire Specialist
Zachary A. Prusak, Wildland Fire Specialist
Tamara L. Serata, WL Fire Program Administrator
Timothy M. Shearman, PhD, Post-Doctoral Researcher
Steve Flanagan, PhD, Post-Doctoral Fellow
Daniel Rosales-Giron, Advanced Fire Behavior Modeling
Douglas E. Rowell, Fire Science Programmer
Geoffrey Gannon, Fire Science Programmer
Leah Eggeman, Fire Science Forester
Zach Cope, Fire Modeling Technician
Matthew Nolasco, Lidar Analyst Research Technician
Wade Ross, PhD, Remote Sensor
Maren Johnson, Fire Research Technician
Gunnar C. Ohlson, Wildland Fire Science Technician
Hannah Redford, Wildland Fire Science Technician
Amanda Schmidt, Wildland Fire Science Technician
Larkin Stiles, Wildland Fire Science Technician
Robert N. Spencer, Fire Science Lab Technician
Laura Fowler, Temp Hourly Worker

GAME BIRD

Theron M. Terhune, PhD, Director Game Bird Research
D. Clay Sisson, Director Albany Quail Project
Justin Allen Rectenwald, Biologist 1, Albany Quail Project
Adam White, Game Bird Technician II, Albany Quail Project
James Moore, Research Technician, Albany Quail Project
Paul Grimes, Game Bird Biologist, Carolina Regional Quail Program
Geoff Beane, Research/Program Manager, Central Florida Rangeland Quail Program (CFRQP)
Richard Paulhamus, Assistant Program Manager, CFRQP

Milton Neu, Assistant Land Manager, CFRQP
Billy Adtkins, Central Florida Rangeland Research CFRQP
Christopher Kunkle, Game Bird Technician, CFRQP
William Lutz, Game Bird Technician, CFRQP
Stoney Vickers, Field Technician II, CFRQP
Alicia M. Arsenault, Wildlife Technician, CFRQP
Vernon B. Howard, Wildlife Technician, CFRQP
Nicole E. Itzkowitz, Wildlife Technician, CFRQP
Steven Matta, Wildlife Technician, CFRQP
Matthew Kunkle, Rollins Ranch Research & Program Manager
Sierra Sico, Game Bird Research Technician, Orton Plantation
Autumn S. Randall, Field Technician, Orton Plantation
Sarah K. Brown, Public Lands Monitoring Coordinator
Philip Coppola, PhD, Game Bird Post Doctorate Scholar
Kyle Magdziuk, Game Bird Lead Technician
Bradley Kubecka, Wildlife Technician
Joshua Copen, Game Bird Technician
Jeremy Fuller, Game Bird Technician
Trey Johnson, Game Bird Technician



A group from the Game Bird Lab mist-netted quail with Stoddard Bird Lab (SBL) director Jim Cox. Mist-netting birds to catch them is a technique used by the SBL. Pictured L-R: Intern Garrett Ake, Jim Cox, biologist Mike Hazelbaker, intern Becky Myers and Game Bird coordinator Phil Coppola. Photo by Kyle Magdziuk

Michael Lamb, Game Bird Technician
 Amy Penta, Game Bird Technician
 Molly Neely-Burnam, P/T Game Bird Technician
 Kara Beer, Wildlife Technician
 Kelsey Hoskins, Wildlife Technician
 Christopher Terrazas, Wildlife Technician

STODDARD BIRD LAB

Jim Cox, Stoddard Bird Lab Director
 Heather Levy, Stoddard Bird Lab Biologist II
 Mary Mack Gray, Stoddard Bird Lab Biologist
 Rob Meyer, Woodpecker Conservation Biologist
 Destinee Story, Stoddard Bird Lab Woodpecker Technician
 Heather Hill, Stoddard Bird Lab Field Technician
 Gianna Tarquinio, Stoddard Bird Lab Field Technician

LAND MANAGEMENT

Eric Staller, Director of Land Management and Fire Operations
 Andrew Chase, Assistant Land Manager
 Austin Taylor, Land Management Technician
 Seth Williams, Fire Technician
 John P. McGuire, Prescribed Fire Private Lands Initiative Director
 Matt Snider, Private Lands Prescribed Fire Coordinator
 Jeremiah Cates, Private Lands Burn Team Coordinator
 Charles Kressler II, Prescribed Fire Technician
 David Grimm, Land Management and Private Lands Burn Team

LIVINGSTON PLACE

D. Clay Sisson, Director
 Randy Floyd, Land Manager
 John-Michael McCormick, Asst. Land Manager
 Alex Jackson, Game Bird Biologist
 Matthew Portwood, Game Bird Technician
 Shannon Braden, Land Management Technician
 Dauten Vaughn, Land Management Technician
 Gloria Hagan, Facilities
 Cassie Lingo, Office Manager
 Debra W. McCormick, Office Manager
 Andrea Barstow, P/T Office Manager

NATIONAL PRESCRIBED FIRE TRAINING CENTER

Greg Seamon, Fire Training Specialist, Prescribed Fire Training Center

INTERNS

Alicia Arsenault, MA, Game Bird, CFRRP
 Allyson Beard, NE, Four Oaks Survey
 Kara Beer, IN, Game Bird



Technicians, (now graduate students), Kelsey Hoskins and Destiny Story Braden, assisting with gopher tortoise surveys. They are carrying a camera system known as a gopher tortoise scope, used to determine if a gopher tortoise is present in its burrow. Photo by Kim Sash

Carl Blackmore, GA, Fire Science
 Kolby Buckley, MO, Game Bird, CFRRP
 Bennett Caughran, GA, Fire Science
 Zachary Cope, TN, Fire Science
 Omie Coyne, FL, Fire Science
 William Ellis, GA, Fire Science
 Brandon Epperon, NC, Game Bird, Orton Plantation
 Louie Fiona, CA, Fire Science
 Jeremy Fuller, NE, Game Bird
 Mackenzi Hallmark, GA, Fire Science
 Quinn Hiers, GA, Fire Science
 Nichole Itzkowitz, CT, Game Bird, CFRRP
 Haley Keff, NY, Game Bird
 Fiona Louie, CA, Fire Science
 Nicholas Lusson, IL, Game Bird, Orton Plantation
 Madeline Lyons, GA, Fire Ecology
 Amy Penta, RI, Game Bird
 Jodi Pinder, ME, Game Bird, CFRRP
 Isabelle Runde, MA, Fire Science
 Rachel Seidner, CA, Fire Science
 Kyle Smelter, CT, Game Bird
 Daria Sparks, NY, Game Bird
 Robert Nash Spencer, VA, Fire Science
 Porter Taylor, FL, Fire Ecology
 Maxwell Utter, CA, Fire Science
 Adam Womble, GA, Fire Science
 Emma Zeitler, TN, Fire Ecology

GRADUATE STUDENTS

Dana Carpenter, University of Georgia, Fire Science
 Laura "Ellie" Fowler, University of Georgia, Fire Science
 Michael Hazelbaker, University of Georgia, Game Bird
 Justin Hill, University of Georgia, Game Bird
 Katie Hooker, University of Florida, Game Bird
 Brad Kubecka, University of Georgia, Game Bird
 Heather Levy, University of Georgia, Stoddard Bird Lab
 Adam McClure, Virginia Tech, Fire Science
 Morgan Morehart, Auburn University, Game Bird
 Emily Prosser, University of Georgia, Game Bird
 Justin Rectenwald, University of Georgia, Albany Quail Project
 Daniel Rosales-Giron, Florida State University, Fire Science
 Sierra Sico, University of Georgia, Game Bird
 Shelby Simons, University of Georgia, Game Bird

JOINT TRAINING ACADEMY INSTRUCTORS

Thomas Anderson	Robert Guse
Steven Bennett	Tommy Hawkins
Michael G. Durfee	David Reid
Victa Edge	Susan Wilder
Troy Floyd	Robert Wilken
Jimmy Gray	William Woodyard

P/T = Part Time



Heather Levy and Peter Kleinhenz at the St. Marks NWR. Peter, who is the Aucilla Watershed Coalition Coordinator, helped Heather, who is a biologist with the Stoddard Bird Lab, do black rail surveys. They found a black rail, the first seen since the project began. Photo by Peter Kleinhenz

2020 STATEMENT OF FINANCIAL POSITION



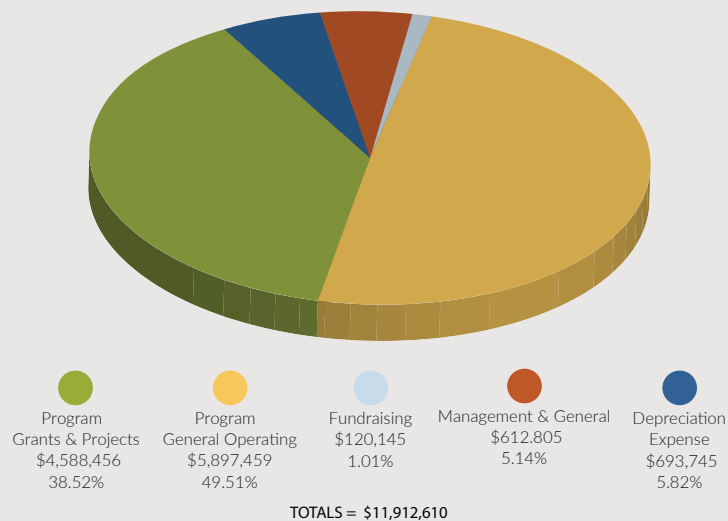
TALL TIMBERS RESEARCH, INC.

Includes Subsidiaries

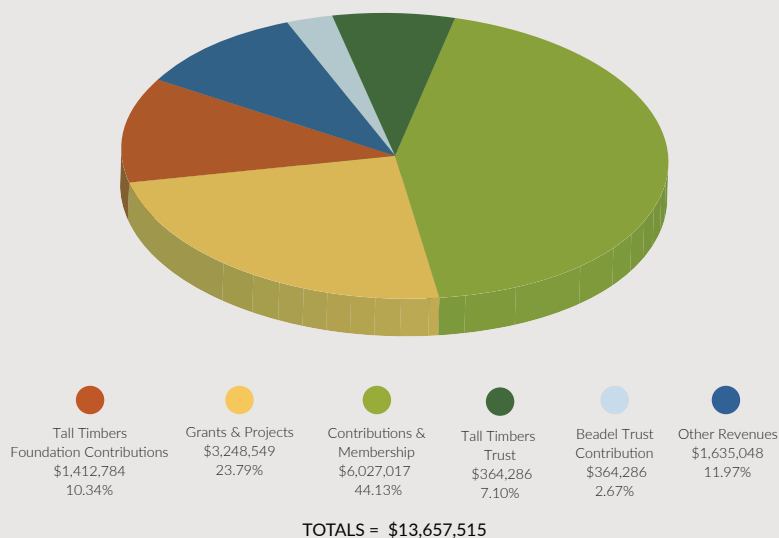
	TOTAL ALL FUNDS	
	2019	2020
ASSETS		
Current Assets		
Cash & Cash Equivalents	\$2,734,724	\$2,548,894
Accounts Receivable	505,976	306,580
Grants/Projects Receivable	-	1,080,930
Due from Tall Timbers Foundation, Inc. (Net)	-	23,986
Prepaid Expenses	19,652	5,102
Total Current Assets	\$3,260,352	\$3,965,492
Property & Equipment		
At Cost less Accumulated Depreciation	\$37,126,302	\$37,928,653
Other Assets	34,419	34,419
TOTAL ALL ASSETS	\$40,421,073	\$41,928,564
LIABILITIES & NET ASSETS		
Liabilities		
Accounts Payable	375,578	210,372
Accrued Liabilities	21,084	14,892
Notes Payable	143,903	89,843
Deferred Revenue	133,652	121,696
Total Liabilities	\$674,217	\$436,803
NET ASSETS		
Without Donor Restrictions	32,381,722	8,473,554
With Donor Restrictions	7,365,134	33,018,207
Total Net Assets	\$39,746,856	\$41,491,761
TOTAL LIABILITIES & NET ASSETS	\$40,421,073	\$41,928,564

PHOTO BY AMANDA SCHMIDT

ALLOCATION OF FUNDS



SOURCES OF REVENUE



"Despite the challenges 2020 brought to us all, the generous support from our donors helped Tall Timbers to continue its research, conservation, and education mission to the communities we serve."

– Crystal Davis Rice, Development Director



13093 Henry Beadel Drive
Tallahassee, FL 32312
850/893-4153 PH | 850/893-6470 FAX
www.talltimbers.org



Address service requested

Non-profit Org.
U.S. POSTAGE
PAID
Permit No. 329
Tallahassee, FL

Printed on Recycled Paper

Editing & Design – Rose Rodriguez & Brian Wiebler

THANK YOU 2020 SPONSORS

