



# TALL TIMBERS

2022 ANNUAL REPORT



# CHAIRMAN & PRESIDENT'S LETTER

Our applied research and management experience are what grounds Tall Timbers. Our close work with landowners and managers forces our organization to focus on relevant information. That is why, as you will see in this annual report, our research and real-world experience result in direct positive outcomes, not just correlatives of success, but real results. We had a record year in research publications and impact. Tall Timbers also has a greater impact on people and conservation, and we are proud that our research and sound information remain the engine that powers our impact.

This new format for our annual report provides short essays on some of our research, education, and conservation activities. Two common threads occur in these stories about our work. Both of these are grounded in our relevant long-term research and relate to helping people achieve their conservation and management goals.

Tall Timbers uncovers limiting factors and finds practical solutions by increasing wild-life populations, using fire, conserving more land, or expanding bobwhite populations. An example is our effort to train future fire managers to reduce the bottleneck of qualified people to apply and expand frequent fire. Our future Leigh Perkins Conservation Education Center fits perfectly to enhance our transfer of information and training for this workforce need!

We have recently increased our efforts to educate policymakers to ensure better use of public funds for conservation and prescribed fire. Information provided by staff has been welcomed and effectively guides policymakers towards more sound policies that will directly affect our conservation future. The challenges to using prescribed fire require Tall Timbers to be at the forefront of fire policy and research. We can best protect the landscapes we hold dear by housing expertise from the ground up. Thank you for your continued support of Tall Timbers!

*On the cover: Yellow Rails and Black Rails are the subjects of Tall Timbers research on prescribed fire needs in coastal marsh habitats. Photo by Peter Kleinhenz*



*Dr. Bill Palmer, PhD  
President & CEO*

*Dr. George Simmons, DVM  
Chairman, Board of Trustees*

## **TALL TIMBERS RESEARCH, INC.**

### **2022 BOARD OF TRUSTEES**

#### **CHAIRMAN**

Dr. George Simmons, DVM

#### **VICE-CHAIRMAN**

Mr. George C. Watkins

#### **SECRETARY**

Mrs. Daphne F. Wood

#### **TREASURER**

Mr. Tom L. Rankin

#### **TRUSTEES**

Mr. Charles M. Chapin III

Mrs. Cornelia G. Corbett

Mrs. Rosamond C. Davis

Mr. Kenneth D. Haddad

Mr. O. Mason Hawkins

Mr. Redmond Ingalls

Mr. Orrin Ingram

Mr. James R. Karels

Mr. Robert H. Kirby

Mr. Rick B. Leverich

Dr. Rodman R. Linn

Mr. David D. Perkins

Dr. Stephen Pyne

Mrs. Virginia Wetherell Scott

Mrs. Kate Sullivan Scovil

Mr. Hewitt B. Shaw

Mr. Wilton R. Stephens, Jr.

Mr. Reggie E. Thackston

Mr Russell Turner

Dr. Philip C. Watt

Mrs. Margaret Weatherby

## **TALL TIMBERS FOUNDATION, INC.**

#### **CHAIRMAN**

Mr. C. Martin Wood III

#### **VICE CHAIRMAN**

Mr. O. Mason Hawkins

#### **TRUSTEES**

Mr. Thomas A. Barron

Mr. Tom L. Rankin

Dr. George W. Simmons

Mr. George C. Watkins

Mr. J. Ben Watkins III

## **Mission**

The mission of Tall Timbers is to foster exemplary land stewardship through research, conservation, and education.

## **Lead Staff**

**William E. Palmer, PhD**, President & Chief Executive Officer

**Melissa Proctor**, Chief Financial Officer

**J. Morgan Varner, PhD**, Director of Research & Senior Scientist

**Kevin M. Robertson, PhD**, Director, Fire Ecology Program

**Seth Bigelow, PhD**, Senior Research Ecologist, Fire Science Applications

**Jim Cox**, Director, Stoddard Bird Lab

**D. Clay Sisson**, Director, Albany Quail Project & Livingston Place

**Brad Kubecka, PhD**, Director, Western Pineywoods Quail Program

**Alex Jackson**, Red Hills Game Bird Research & Extension Biologist

**Joe Noble**, Director, Geospatial Lab & Information Technology

**Eric Staller**, Director, Land Management & Fire Operations

**John P. McGuire**, Director, Private Lands Prescribed Fire Initiative

**Kim Sash**, Coordinator, Biological Monitoring

**Shane Wellendorf**, Director, Tall Timbers Land Conservancy

**Crystal Davis Rice**, Director, Development

**Lorrie Asbell**, Director, Facilities

**Brian Wiebler**, Director, Communications

Staff  
Contacts





4,102 acres of the Norias property along Lake Miccosukee were permanently protected in 2022, by a new state-held conservation easement. Photo by Lauren Yoho

## LONG-TERM EFFORT YIELDS NEW PATH FOR PRIVATE LANDS CONSERVATION

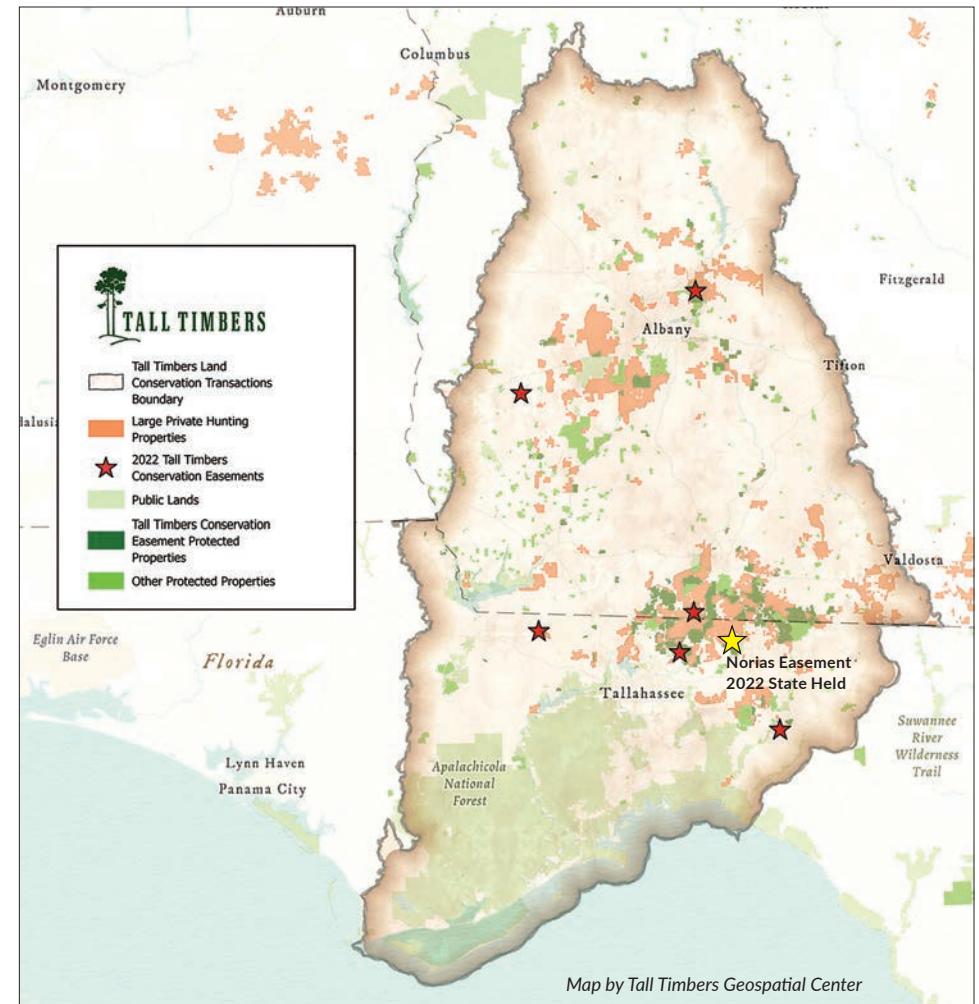
Land stewardship is about responsible management for both present and future generations. Tall Timbers' donors have long supported this balance between current practical needs and drive for a future that includes the landscapes we love. This willingness to invest in long-term efforts has now brought forward another funding opportunity for permanent private lands conservation.

In late summer 2022, the State of Florida, through the Florida Forever program, purchased a conservation easement on approximately 4,102 acres of the historic Norias property in Jefferson and Leon Counties, Florida.

This state-held conservation easement complements the Tall Timbers held conservation easement on Mays Pond and adjacent public lands. Together these properties permanently conserve the eastern side of Lake Miccosukee. The Norias conservation easement marks a successful collaboration with the State of Florida to deliver public funding to support private land conservation in the Red Hills. Our first Georgia funding success was in 2021 with a grant to support the Birdsong Nature Center conservation easement purchase, scheduled for completion in 2023.

These recent successes result from a ten-year sustained outreach effort by Tall Timbers, our donors, and the public to support state conservation funding to permanently protect lands that might not be possible through

## 2022 CONSERVATION EASEMENTS



donated conservation easements. Donated and purchased conservation easements will continue to be important in our land conservation toolbox, as landowners receive compensation for their development rights through tax benefits, direct payments, or a combination.

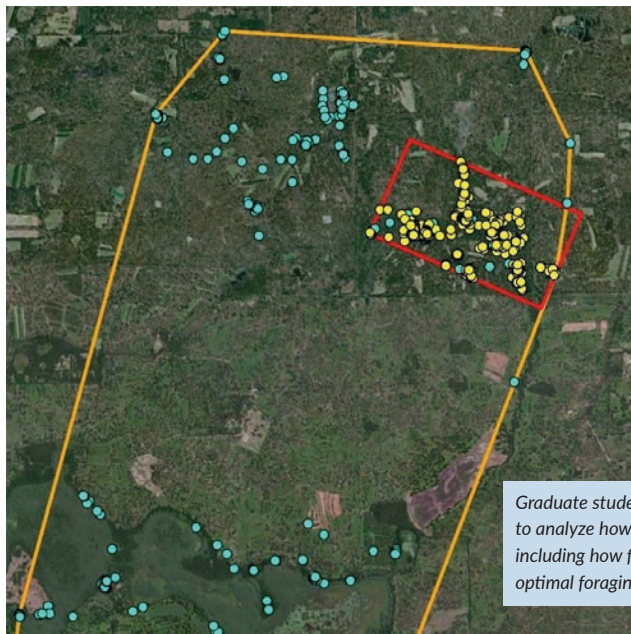
Thanks to the owners of Norias, this significant milestone – to protect the Red Hills and diversify our options for future conservation easements – has been achieved.

# RED HILLS FOCUS

## THIS COMMUNITY OF LANDOWNERS TACKLED FERAL SWINE MANAGEMENT

Feral swine are a nasty problem. Not only do they cause damage to natural habitats and agriculture, but they can also spread diseases to livestock, dogs, and humans. By the 2010s, this oversized invasive species was well established in the Red Hills region's working lands and natural areas. Their outrageous reproduction rates and ability to roam among properties meant that controlling these wild pigs required a community effort.

Feral swine were not a research species for Tall Timbers. However, our strengths do include working relationships with landowners and applied science for wildlife management. So, armed with landowner support and a "can-do" attitude, Tall Timbers partnered with the US Department of Agriculture's Feral Swine Eradication and Control Pilot Program in 2019. The project, funded by the 2018 Farm Bill, includes the Red Hills region from Tallahassee, Florida, to Thomasville, Georgia, shouldered by the Ochlockonee and Aucilla rivers.



The project funds USDA's Wildlife Services employees who apply their trapping expertise on private lands. Seventy-eight different landowners, or 87% of Red Hills' large landowners, have worked with Tall Timbers and leveraged Farm Bill funding

Graduate student Chris Terrazas uses GPS collars to analyze how wild hogs use the landscape, including how far they travel, routes of travel, and optimal foraging and resting habitats.



Brent Howze (Georgia DNR) and Kelsey Hoskins (University of Georgia graduate student) collar a feral hog.

to remove over 4,024 hogs. This high participation level and concentrated effort resulted in an 80% hog reduction in the Red Hills as a whole, with many properties reporting no remaining hogs.

Tall Timbers' ability to design and implement research concurrently with land management was also a significant factor in successfully attracting these federal funds to the region. Two research projects are underway with University of Georgia Master's students. Kelsey Hoskins uses wildlife cameras and landowner surveys to research the before and after effects of feral swine removal. Chris Terrazas uses GPS collars to analyze how wild hogs use the landscape, including how far they travel, routes of travel, and optimal foraging and resting habitats. Together these research efforts will help inform future damage reduction and control of feral hogs.

Project funding will end in September 2023. Tall Timbers will continue to work with landowners on what we have learned through this pilot effort and options to sustain the low feral swine population the region now enjoys.



Wild hog caught on camera at night.

## HISTORICAL AND NATURAL RESOURCE CONSERVATION ON DISPLAY AT LIVINGSTON PLACE

In January 2022, the National Park Service added Tall Timbers' 9,125-acre Livingston Place property in Greenville, Florida, to the National Register of Historic Places; it is one of the largest designated sites in the state. National Register designation recognizes this distinct cultural landscape and its architectural significance.

The Red Hills Spring Dinner was hosted in April 2022, at Livingston Place to celebrate the completion of a four-year, award-winning restoration of the 1938 manor house. Daphne and Marty Wood were honored for their leadership and support of this significant historic restoration effort. In addition, the dinner raised over \$150,000 to design and build a new interpretive exhibit in the historic house, to be completed in 2023.



Marty and Daphne Wood were honored for their leadership and support for the Livingston Place restoration effort.



Livingston Place continues to be integrated into Tall Timbers' research and land management efforts. It hosts projects that involve prescribed fire, wildlife species of conservation concern, and game bird research. During 2022, Tall Timbers' Joint Training Academy hosted prescribed fire training at Livingston Place for civilian employees of the Department of Defense responsible for fire management on military installations across the country.

A fundamental need for research and management at Livingston Place has been to document the site's plant biodiversity.

In 2022, an inventory of the flora was begun by Beadel Fellow Dr. Richard Carter, who worked with biologist Wilson Baker on this project. In addition, plant taxa with supporting voucher specimens have been accessioned into the Valdosta State University Herbarium, which provides a permanent archive of the flora of this important natural area.

Ongoing restoration of the uplands—hardwood cleanup and thinning of planted pines—has benefitted native species that depend on open, fire-maintained habitat. Of note is the abundant wild quail population; guests can now expect to see 30 plus coveys in a day's hunting.

2022 was the 128th running of the nationally prestigious Continental Field Trial, which has been held at Livingston Place for over 80 years.





*"Simply restoring habitat does not mean a population will respond if there is no population there to begin with. This is why translocation is important after habitat restoration in these regions that have lost their birds."*

# SOUTHEAST IMPACT



## RESEARCHERS SHINE AT QUAIL SYMPOSIUM

Tall Timbers demonstrated science leadership at the Ninth National Quail Symposium in 2022. Staff members contributed to eleven Symposium Proceedings articles published by the National Bobwhite & Grassland Initiative. Thanks to our donors, Tall Timbers is able to conduct long-term data collection and research that continues to expand our understanding of bobwhite quail needs and adaptive management to maintain and expand their populations.

## QUAIL WORK EXPANDS IN THE WESTERN PINEYWOODS

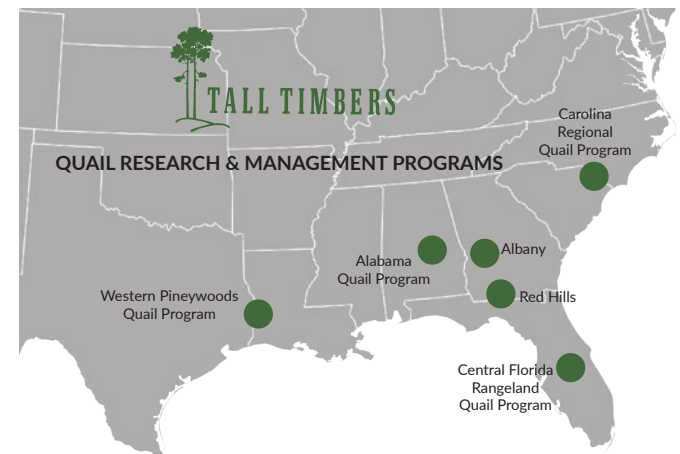
The Western Pineywoods Quail Program is focused on expanding wild quail populations in Texas, Louisiana, and Arkansas — it's also the newest of four Tall Timbers Regional Quail Programs working outside of the Red Hills and Albany.

In 2022, staff in the Pineywoods visited approximately 100,000 acres of potential quail lands; management plans and recommendations were written for seven properties, encompassing 26,000 acres. Increased public hunting opportunities for bobwhite were also pursued by developing partnerships with state, federal, and non-profit partners.

Western Game Bird Program Director Dr. Brad Kubečka and his staff helped guide habitat improvements to a private property in Polk County, Texas, where they focus their research. This habitat work set the stage for wild quail translocation in 2023.

"Simply restoring habitat does not mean a population will respond if there is no population there to begin with. This is why translocation is important after habitat restoration in these regions that have lost their birds," Kubečka said. "We're using the data from these translocated birds to tell us whether our blueprint from the Red Hills and Albany can work here."

The Western Piney Woods Quail Endowment was established to support the Tall Timbers Western Game Bird Director position. This on-the-ground role is critical for quail expansion west of the Red Hills and Albany regions. Chuck Ribelin and other private donors have given generous support. However, \$1.6 million remains to complete the endowment. In addition, the Gordy Family of Houston, Texas, Park Cities Quail Coalition, and the Texas Parks and Wildlife Department have funded Tall Timbers' research projects in the region.



## NEW REMOTE SENSING IMPROVES NATURAL COMMUNITY IDENTIFICATION

Whereas most satellite remote sensing to date captures only a few bands — like blue, green, red, and infrared — hyperspectral remote sensing divides the electromagnetic spectrum into hundreds of bands. This high spectral resolution allows researchers to differentiate subtle variations in the reflectance patterns of different surfaces.

The Tall Timbers Fire Ecology Lab received funding from NASA to explore the potential for using new hyperspectral remote sensing products for mapping and monitoring natural resources.

Researchers tested tradeoffs among different image resolutions — or sizes of image pixels — for distinguishing natural community types at the Disney Wilderness Preserve, Ordway-Swisher Biological Station, Jones Ecological Research Center, and sites in the Red Hills region, all containing longleaf pine ecosystems.

Using the hyperspectral remote sensing data, a new technique was developed to distinguish native and old-field pine communities with about 70% accuracy. Additionally, researchers were able to separate frequently burned pine communities from other land uses with over 90% accuracy.

These scientific advances allow for landscape-scale identification of areas with the highest values for wildlife, biodiversity, and other ecosystem services. The next hyperspectral project will focus on identifying recently burned areas; we expect similarly significant improvements.



Longleaf pine-wiregrass community (left) and old-field shortleaf pine-loblolly pine community (right) treated with frequent prescribed burning.



Map by Tall Timbers Geospatial Center

## PREScribed BURN ASSOCIATIONS USE NEIGHBORS-HELPING-NEIGHBORS MODEL

Prescribed Burn Associations (PBA) promote the use of prescribed fire through collaborative work among landowners and managers to connect them with training, education and resources to help expand burning as a beneficial land management tool.

The goal is to put more fire on the ground across the region—with increased landowner involvement — through neighbors helping neighbors in partnerships that pool knowledge, resources and equipment.

Started in June 2022, the Southwest Georgia PBA is a partnership among Tall Timbers, the Golden Triangle Resource Conservation and Development Council, the Natural Resources Conservation Service (NRCS), Quail Forever, the Georgia Department of Natural Resources and the Georgia Forestry Commission. The Southwest Georgia PBA, run by SW Georgia Prescribed Burn Association Coordinator George Jensen, is one of three independent PBA organizations, the Central Alabama PBA and the Northwest Florida PBA being the others, staffed by Tall Timbers as part of the Private Lands Prescribed Fire Initiative.

# NATIONAL INFLUENCE

## EARNED MEDIA BUILDS TALL TIMBERS' NAME AS NATIONAL POLICY INFLUENCER

Tall Timbers had national level mentions, twice in the *New York Times* and in *USA Today*, about prescribed fire and the nation's growing relationship with fire. Researchers in the Game Bird Program and Stoddard Bird Lab were interviewed for *Living Bird Magazine* about the national undertaking to



restore quail to their historic range, and how land management for bobwhite benefits other species of concern. A national PBS episode, covering a country-wide look at the history of fire, included video from Tall Timbers' campus and interviews with Morgan Varner, Kevin Hiers, Greg Seamon and Zack Prusack.

## IMPROVEMENTS MADE DURING 90-DAY PAUSE

In 2022, a prescribed fire escape in New Mexico led to the U.S. Forest Service Chief ordering a 90-day pause on burning in National Forests. However, Tall Timbers' researchers joined 120 other scientists in signing a letter opposing the pause, citing the need for necessary burning to continue. Despite the setback, Tall Timbers was invited to participate in panels to review best practices and improve training, with Board member Jim Karels serving on the review leadership team. As an initial result of these efforts, The National Prescribed Fire Training Center stationed five employees out west and will begin training there in 2024. Tall Timbers' staff actively engages with Forest Service Leadership to improve prescribed fire on public lands.



## PRESCRIBED FIRE CAMPAIGN REACHES MILLIONS

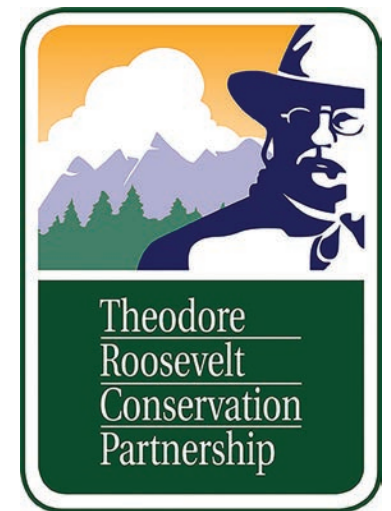
Call it public support, social license, or normalization; we all know that community support for prescribed fire is critical to protect and expand its use. Tall Timbers jumped in to help by creating

a three-year public-private partnership with the Florida Forest Service to develop a modern marketing campaign and deliver positive prescribed fire messages through 2022. The annual ad campaign is a model for proactive fire communication that could be used in other states nationwide.

Tall Timbers' donors funded nearly 40% of the three-year effort that delivered over 42 million targeted ads in Florida. While the original contract ended in 2022, the Florida Forest Service established a new agreement to fully fund the ads in 2023.

## A RED HILLS PERSPECTIVE JOINS THE TRCP

In 2022, Tall Timbers joined the Theodore Roosevelt Conservation Partnership (TRCP) Policy Council, a national non-profit coalition of conservation and outdoor organizations that work to guarantee quality areas for hunting and fishing for all Americans. Morgan Varner, Tall Timbers' Director of Research, serves as our representative. Varner brings Tall Timbers' perspective on prescribed fire as a critical process for wildlife and biodiversity conservation on public and private lands.



## “BURN BACK BETTER” SEEKS TO IMPROVE WESTERN STATE POLICIES

Tall Timbers partnered with the Property and Environmental Research Center (PERC) on the “Burn Back Better” report to analyze western state policies and recommend improvements to increase private lands prescribed fire. Released in January 2023, the report is the most comprehensive review of state-level prescribed fire policy affecting private lands in 11 western states. It examines the most significant obstacles to prescribed fire in the West, describes states’ recent progress on these fronts, and proposes reforms to allow private land-owners to scale up prescribed fire use.



© Maria Thi Mai/BLM

## PUBLISHED RESEARCH HAS RECORD YEAR

Scientists published peer-reviewed articles in the world's top journals in 2022: Nature Scientific Reports, Proceedings of the National Academy of Sciences NEXUS, Journal of Ecology, and Science of the Total Environment. Scientific research is our tool to answer pressing questions from our partners. It's critical to Tall Timbers' standing as a provider of research-based recommendations. We integrate research and land management. This combination also informs our work as a national thought leader and advisor to policymakers at the local, state and federal level. So many organizations either do research or they do implementation and policy. Tall Timbers does it all.



## TAKING LOCAL FIRE EXPERTISE TO ITALY

The 2022 Association for Fire Ecology Conference at the University of Florence highlighted Tall Timbers' intersection of prescribed fire and science internationally. Tall Timbers' Director of Research Morgan Varner was part of the organizing committee and was joined by Geospatial Lab Director Joe Noble, and Fire Ecology Program Director Kevin Robertson as presenters. Tall Timbers pressed for prescribed fire to be more prominent on the agenda, unique internationally, where wildfire is typically a focus. The event allowed current staff to build international fire connections, as well as reconnect with Tall Timbers' history as an international leader in fire.

# 2022 SUPPORT

## CUMULATIVE ANNUAL GIVING

Donors are the driving force behind Tall Timbers — a provider of independent research and creative problem-solving for land stewardship issues. From the national policy level to down in the weeds with a land manager, your questions and your financial support enable our practical and flexible approaches. We thank our supporters who give generously through general memberships, project-specific contributions, events, and the Tall Timbers Foundation.

### \$500,000 – \$2,500,000

Anonymous  
Anonymous  
The Ma-Ran Foundation  
The Perkins Charitable Foundation  
Mr. Ogden Phipps II  
The Gary W. Rollins Foundation

Mr. Remy Trafelet  
Turner Foundation  
  
**\$25,000 – \$49,999**  
Mr. and Mrs. Johnathan Bean  
Mrs. Russell P. Chubb  
Mrs. Robert P. Crozer  
Mr. and Mrs. Joseph H. Davenport III  
Mrs. Edward A. Davis, Jr.  
Firman Fund  
Four Oaks Plantation  
Mr. and Mrs. Stanley V. Graff  
The Margie and Sam Gray Family Fund

### \$100,000 – \$499,999

Mr. and Mrs. Richard A. Corbett  
The William Stamps Farish Fund  
Mr. and Mrs. Lawrence Flinn, Jr.  
William Howard Flowers, Jr. Foundation  
Mr. Russell Gordy  
Elizabeth Ring Mather & William Gwinn Mather Fund, Mr. James D. Ireland IV  
Mr. and Mrs. John L. Morris  
The Anne and Leigh Perkins Foundation  
Mr. and Mrs. C. Martin Wood III

Mr. Chad Gunter  
Mr. and Mrs. Raymond J. Harbert  
Hayden Outdoors Real Estate  
Mr. and Mrs. Kevin Kelly, Kevin's Fine Outdoor Gear & Apparel  
R. K. Mellon Family Foundation  
The G. Unger Vetlesen Foundation  
Mr. Charles L. Palmer III  
The Parker Poe Charitable Trust  
Mrs. Maury F. Shields  
Mr. and Mrs. Kevin Stump  
Mr. and Mrs. Russell Turner  
Mr. Ben Wall  
Mr. and Mrs. George C. Watkins  
  
**\$10,000 – \$24,999**  
Anonymous  
Angus G. Andrews Jr. Family Partnership  
Laurie Andrews and Perk Perkins Fund  
The Archibald Foundation  
Mr. Robert G. Bearden, Jr.  
Mr. and Mrs. William Becker  
Ms. Wendy H. Bicknell  
Mr. Richard Burke  
Mr. James E. Butler Jr.  
Mr. James E. Butler, Jr.  
Mr. and Mrs. Charles M. Chapin  
Mr. Jim Cone  
Mr. and Mrs. William F. D'Alonzo  
Dr. John B. Davis Jr.  
Deer Run Plantation  
Doe Run Plantation  
William H. Donner Foundation  
Mr. John F. Flournoy  
Mr. and Mrs. Frank Foley  
Blue Grass Community Foundation, Mr. Peek Garlington  
Mr. Kent Gilges  
Mr. Terence M. Graunke  
The Frederic C. Hamilton Family Foundation, Mr. and Mrs. Tom Hamilton  
Mr. and Mrs. Steve Hufstetler  
Mr. Robert L. Ireland Jr. in honor of Sally and Watts Humphrey  
Mr. Harmon Jeffords Jr.  
Mr. and Mrs. Johnny Johnson  
Mr. and Mrs. Paul Tudor Jones II  
Jones Family Fund  
The Thomas M. Kirbo and Irene B. Kirbo Charitable Foundation  
Mr. and Mrs. Robert H. Kirby  
Jon Kohler & Associates  
Mr. and Mrs. Kam Kronenberg

Ben and Nocy Livingston Fund  
Mr. Richman Margeson  
Merrily Plantation  
The Uible-Morris Family Foundation, Mr. and Mrs. William H. Morris  
John and Susan Mullin Fund  
Austin and Jane Musselman Foundation  
National Philanthropic Trust  
Ms. Molly Perkins  
Mr. David D. Perkins and Mrs. Nancy Mackinnon  
Mr. and Mrs. John E. Phipps  
Mr. Colin Scully  
Mr. Ryan Seiders  
Mr. Robert Shaw  
Dr. and Mrs. George W. Simmons, North Florida Animal Hospital  
Mr. Rick Simmonds  
Mr. and Mrs. Warren Stephens  
Mr. and Mrs. Witt Stephens, Jr.  
Mr. Barry L. Storey  
Mr. and Mrs. Timothy P. Sullivan  
Tarva Partners  
Longleaf Charitable Fund, Mr. and Mrs. Charles M. Tarver  
Mr. Greg Thompson and Mr. Lewis Thompson  
Mr. R. Beau Turner  
Wade Research Foundation  
Mr. and Mrs. John B. Wagner  
Mr. Virgil R. Williams

### \$5,000 – \$9,999

Anonymous  
The Alexander Foundation  
Mr. Tom Annexstad  
Mr. and Mrs. C. DuBose Ausley  
Ausley & McMullen  
Martha Rivers Ingram Advised

Fund, Mr. Aaron Barrett  
Mr. and Mrs. Thomas A. Barron  
The Theo B. Bean Foundation, Mr. Patrick A. Bean  
Benners Contracting, Mr. and Mrs. Brad Benners  
Mr. and Mrs. Sheldon Bryan  
Mr. and Mrs. Chas H. Cannon  
Capital City Bank Group Foundation  
Mrs. Susan Carr  
Mr. Charles A. Carson, Jr.  
Mr. and Mrs. J. Palmer Clarkson  
Mr. and Mrs. Edwin Cooper  
Dr. R. Todd Engstrom  
Mr. Howell L. Ferguson and Dr. Sharon Maxwell-Ferguson  
Mr. and Mrs. John P. Fort  
Foundation for the Carolinas, Tom and Kathy Ewing Fund  
Mr. Dumas Garrett  
Mr. and Mrs. T. Michael Goodrich  
Mr. John D. Gottwald  
Hickory Head, Mr. and Mrs. Gordon Mooney  
The Pegasus Foundation, Mr. and Mrs. Barney Ireland  
Mr. Neil J. Jones  
Samuel B. Kellett, Sr. Foundation  
Mr. and Mrs. Bob Kenna  
Mr. and Mrs. Ron LaFace  
Lanigan & Associates, Mr. and Mrs. Bernard Lanigan  
Mr. Casey Laver  
Lonely Oak Plantation  
The Northern Trust Company  
Mr. Walter Matia  
Mr. H. Gordon Maxwell III  
Mr. Roy McCrany  
The Frederic C. Hamilton Family Foundation, Mr. and Mrs. Ted McGraw

Mr. E. Smyth McKissick  
Athens Area Community  
Foundation, Dr. William B.  
Mulherin  
NAI TALCOR  
Nilo Plantation  
Nonami Plantation  
Mrs. Diane Williams Parker  
Ms. Hannah Perkins  
Mr. Greer Radcliff  
Mr. and Mrs. Tom Ratchford  
Mr. and Mrs. Charles W. Roberts III  
Mr. Robert Rose  
Mr. and Mrs. Hewitt B. Shaw  
Mr. and Mrs. M. Toddy Smith  
Thomasville Ford  
Thomasville National Bank  
Dr. William L. Tietjen  
Mr. and Mrs. Thomas V. H. Vail  
Mr. and Mrs. J. Ben Watkins III  
Dr. and Mrs. Philip C. Watt  
Mr. and Mrs. Putt Wetherbee  
Mrs. Virginia Wetherell Scott  
Mr. Kimball Wetherington  
Mr. and Mrs. E. Howard Young

**\$2,500 – \$4,999**

Ag-Pro  
Mrs. Kathy R. Archibald  
Mr. John D. Baker II  
Barnes Capital Group  
Beasley Timber  
Mr. J. Travis Bryant  
Cherokee Foundation Charitable  
Fund  
Capital City Bank  
Mr. Craig Carnley  
Mr. Christopher Craver  
Mr. and Mrs. Guy De La Valdene  
Mr. and Mrs. James K. Dobbs III  
Mr. Christopher F. Dudley

The Gerry-Corbett Foundation  
Mr. Samuel S. Gottwald  
Mr. and Dr. Reid Hanway  
Mr. and Mrs. Redmond S. Ingalls  
Mr. Hank Johns  
The Longleaf Alliance  
Mr. Jeffory Oliver  
Mr. and Mrs. Jenks Parker  
Ms. Knox Parker  
Mr. and Mrs. Jeffrey S. Phipps  
Seth L. & Consuelo W. Pierrepont  
Family Foundation  
Redwire  
Mr. and Mrs. Thomas S. Roth  
Ms. Anne Schmidt  
Shaffield Building Specialties  
F&W Forestry Services,  
Mr. Marshall Thomas  
Mr. Michael Thompson  
Dr. and Mrs. Walter R. Tschinkel  
Mr. Daniel Tutcher  
Ms. Kathleen Vignos  
Mrs. Jeptha V. Wade  
Mr. and Mrs. John Walsh  
Ms. Anne E. Wright  
The Wright Group

**\$1,000 – \$2,499**

Anonymous  
Mr. and Mrs. Clinton Alexander  
Alexander & Vann  
Dr. and Mrs. J. Galt Allee  
Ms. Lisa Aten  
Mr. Clay Baker  
Theo B. Bean Foundation,  
Mr. Jeff Bean  
Ms. Jann Bellamy  
Big Oak Tree Rug Gallery  
Mr. and Mrs. Sid Bigham  
Mr. and Mrs. Hal Brannen  
Mr. Sam Bratton

Dr. and Mrs. William Cain, Jr.  
Mr. L. Hardwick Caldwell  
Mr. Christopher G. Campbell  
Canfor Southern Pine  
Messer Capareello P.A.  
Ms. Fraley Carlton  
Mr. Randall Chase, Jr.  
Childers Construction  
Mr. Jeff Clyne  
Mr. and Mrs. Charles E.  
Commander III  
Mr. Joe Congleton  
Mr. and Mrs. Spence Conrad  
Franklin Family Farm,  
Mr. George Cox  
Crowder Excavating  
Demont Insurance Agency  
Mr. Thomas R. Devlin  
Diamond Timberlands  
Edwards Olson Architecture  
Farm Credit of Northwest Florida  
Mr. and Mrs. Robert R. Feagin III  
Mr. and Mrs. James L. Ferman, Jr.  
Flint Equipment Company  
Dr. and Mrs. Jerry G. Ford  
Mr. Daniel Fowler  
Mr. Trey Googe  
Mr. and Mrs. P.T. Grant  
Mr. and Mrs. Stefan Grow  
Gulf Winds Track Club  
Mr. William Hackney  
Mr. and Mrs. Kenneth D. Haddad  
Mr. Karl Halbig  
Mr. Terrance Hall  
Mr. Beaver Hardy  
Mr. Michael S. Hartman & Mr.  
Frank Hartman  
Ms. Nena Hester  
Dr. and Mrs. Louis Hill, Jr.  
Mr. Michael Hill

Mr. Maynard Hiss  
Mr. and Mrs. H. Don Horne  
Ms. Jean Huffman  
Mr. and Mrs. G. Watts Humphrey, Jr.  
Mr. and Mrs. Chip Johnson  
Mr. and Mrs. Christopher Jones  
Keller Green Acres  
Mr. and Mrs. Keith Kelly  
Bruce W. Kirbo, Jr., Attorney at Law  
Ms. Connie S. Kummer  
Mr. Jack Larsen  
Mr. and Mrs. Michael Ledyard  
Mr. and Mrs. John B. Long II  
Mr. and Mrs. Edward Loughlin  
Dr. and Mrs. J. Robert McClure III  
McCollum, Rawlins, Cauley &  
Parrott  
Mr. Charles G. McDaniel  
Mr. Mitch McElroy, MLM Private  
Forester  
Keith McNeill Plumbing  
Mrs. Douglas C. McPherson  
Mr. and Mrs. Vann Middleton  
Mr. Richard G. Mooney III  
Mr. Chris Myers  
Mr. Everall D. Perkins  
Pheasants Forever  
Mr. and Mrs. Sam Pickenpaugh  
Dr. and Mrs. Lawrence Pijut  
Mr. and Mrs. C. Mark Pirrung  
Mr. Clifford M. Preston  
Prime Meridian Bank  
Mr. and Mrs. Brian C. Proctor  
Mr. Robert Reid  
Dr. and Mrs. John B. Reynolds  
Mr. John Rich  
Ms. Julie D. Ripley  
Dr. and Mrs. David Saint  
Dr. and Mrs. Charles R. Sanders  
Dr. and Mrs. Ellery Sedgwick

Mr. and Mrs. Ellery Sedgwick  
Mr. and Mrs. Michael Sheridan  
Mr. and Mrs. Wallace Edward Sholar, Jr.  
Mrs. Lesley S. Simmons  
Mr. and Mrs. Taylor W. Smith  
Mr. Hill Smith  
South Georgia Surgical Associates  
Southwest Georgia Farm Credit  
Mr. Carter Stockton  
Mr. and Mrs. Harris Strickland  
Tim and Wendy Sullivan Charitable  
Fund  
Synovus Bank  
Mr. Paul Taber  
Thomas County Federal Bank  
Thomasville Animal Hospital  
Mr. and Mrs. Richard S. Vann  
Jonathan Vines, Landscape Architect  
Dr. Timothy Walker  
Dr. and Dr. Timothy Walker  
Mr. and Mrs. Ebe Walter  
Plantation Services, Mr. Lee Walters  
Mr. Jody Walthall and Mrs. Donna  
Legare  
Mr. Thomas Warren  
Mr. and Mrs. Todd Watkins  
Mr. Tom C. Weller, Jr.  
Mr. and Mrs. E. John Whelchel  
Ms. Katherine Willing  
Mr. Dudley Winthrop  
Wiregrass Electric  
Mr. Mark A. Worthey

View a complete list of  
donors at all levels with the  
following QR Code link.



# 2022 SUPPORT

## TALL TIMBERS FOUNDATION

The Tall Timbers Foundation manages our endowments. Tall Timbers utilizes a 3-year rolling average to determine our yearly endowment draw, and has averaged less than 5% of endowment funds over the past decade. By contributing to an endowment, you are contributing to a lasting legacy of support for our cause.

### ENDOWMENT DONORS

#### LEIGH PERKINS CONSERVATION EDUCATION CENTER ENDOWMENT

Laurie Andrews and Perk Perkins Fund

Elizabeth Ring Mather & William Gwinn Mather Fund, Mr. James D. Ireland IV

Mr. Walter Matia

Ms. Hannah Perkins

Mr. and Mrs. Leigh H. Perkins, Jr.

Ms. Molly Perkins

#### ALBANY QUAIL ENDOWMENT

Mr. and Mrs. Joseph H. Davenport III  
Deer Run Plantation

Mr. and Mrs. Lawrence Flinn, Jr.

Mr. Hank Johns

Jones Family Fund

Richard King Mellon Family Foundation

The PineBloom Family Foundation

Mr. and Mrs. Charles M. Tarver

Mr. Remy Trafelet

Mr. and Mrs. Witt Stephens, Jr.

#### DR. CLIFTON J. BAILEY ENDOWMENT

Dr. and Mrs. Clifton J. Bailey

#### PROTECT & EXPAND

Mrs. Edward Davis

Mr. and Mrs. Jim Karels

#### QUAIL EXPANSION AND RECOVERY ENDOWMENT

Mr. and Mrs. William F. D'Alonzo

The Ma-Ran Foundation

The Gary W. Rollins Foundation

#### RED HILLS STEWARDSHIP ENDOWMENT

Dr. and Mrs. Clifton J. Bailey

Ms. Marjorie C. Bishop

Mr. Benjy Griffith

Mr. Chad Gunter

Mr. Harmon Jeffords, Jr.

Mr. and Mrs. Johnny Johnson

Mr. Richman Margeson

Mr. Kimball Wetherington

Mr. and Mrs. C. Martin Wood III,  
Merrily Plantation

Ms. Anne E. Wright

#### WADE TRACT ENDOWMENT

Mr. and Mrs. Charles M. Chapin

#### WESTERN PINEYWOODS QUAIL ENDOWMENT

The William Stamps Farish Fund

Mr. and Mrs. Kam Kronenberg

Mr. Colin Scully

Mr. Ryan Seiders

#### TALL TIMBERS FOUNDATION ENDOWMENT FUNDS

- » Albany Quail Endowment
- » Chuck Ribelin Brood Ecology Research Fellowship
- » Dr. Clifton J. Bailey Endowment
- » Corbett Fire Endowment
- » Leigh Perkins Conservation Education Center Endowment
- » Livingston Place Endowment
- » Gerry Game Bird Endowment
- » Tall Timbers Endowment
- » Land Conservancy Endowment
- » Quail Expansion and Recovery Endowment
- » Red Hills Land Conservation Opportunity Endowment
- » Red Hills Stewardship Fund
- » Stoddard Bird Lab Endowment
- » Wade Tract Endowment
- » Western Pineywoods Quail Endowment

#### TRUSTS BENEFITTING TALL TIMBERS

- » Beadel Trust
- » Tall Timbers Trust



## LEIGH PERKINS CONSERVATION EDUCATION CENTER SET FOR PERMITTING AND CONSTRUCTION

In 2022, our supporters dedicated memorial gifts to the Leigh Perkins Conservation Education Center. Special gifts in memory of Leigh Perkins and Ken Hart helped Tall Timbers achieve the goal of \$5 million needed to complete the construction goal. The Perkins Family generously helped to launch this new 12,000-square-foot building that will allow Tall Timbers to continue to fulfill its role as the epicenter for research and education on prescribed fire, land conservation, and wildlife management.

While the fundraising goal for the center's construction has been achieved, additional endowment donations will support ongoing technology maintenance. Planning and permitting are underway in 2023, with construction scheduled for 2024.

## 44 YEARS OF WADE TRACT RESEARCH

With endowment support, Kevin Robertson, Bill Platt and Maynard Hiss completed the recurring Wade Tract tree census in 2022. Initiated in 1978, the long-term data provide an exceptional look at subtle changes occurring among trees that can live more than 500 years.



A 474 year-old longleaf pine growing on the Wade Tract.

## 25TH ANNUAL KATE IRELAND DINNER AND AUCTION

### KATE IRELAND

The Parker Poe Charitable Trust  
Henry Beadel  
1915 South  
Ashley Homestore  
Mr. Jim Cone  
Cornelia and Dick Corbett  
Hayden Outdoors  
North Florida Animal Hospital  
Pinckney Hill  
Kay and Tom Rankin  
Lindi and George Simmons  
Carol and Witt Stephens  
Teramore  
Cyndi and George Watkins

### BOBWHITE QUAIL

Ausley & McMullen  
Benners Contracting

Elizabeth and John Fort  
Jeanette and Stan Graff  
Kevin's Fine Outdoor Gear & Apparel  
Mr. and Mrs. Robert H. Kirby  
Jon Kohler & Associates  
LeyAnn and Ron LaFace  
Lanigan & Associates, P.C.  
NAI TALCOR  
Karen and Robert Nunally  
Ginger and Jim Scott  
The Northern Trust Company  
Joy and Ben Watkins

### LONGLEAF

Barnes Capital Group  
Capital City Bank  
The Chubb Family - In Memory of Russell Chubb

Conrad Design & Landscape  
Cureton Johnson & Associates  
Mrs. Edward A. Davis  
Martha Plantation  
Mr. Richard Mooney  
Pinefields Plantation  
Pines of Avalon  
Redwire  
Shaffield Building Specialties  
Tallahassee Pediatric Dentistry  
The Southern Group  
Turner's Creek & Bombay Hook Farms

Tutcher Land & Timber  
Dr. and Mrs. Philip Watt  
Mr. and Mrs. Putt Wetherbee  
The Wright Group



Guests mingle during the silent auction at the 25th Annual Kate Ireland Dinner & Auction at Tall Timbers in October



Texas native Chuck Ribelin poses with Bill Palmer while being honored at the 2022 auction.

### RED HILLS

Archbold, South Georgia Surgical Associates  
Mr. and Mrs. DuBose Ausley  
Bensons Heating & Air Conditioning  
Berger Singerman  
Ann & Hal Brannen  
Childers Construction  
CliftonLarsonAllen  
Crowder Excavating  
Demont Insurance Agency  
Edwards Olson Architecture  
Farm Credit of Northwest Florida  
Cay and Jerry Ford  
Grant & Cook Equipment  
Tina and Stefan Grow  
Erica and Harper Hanway  
Julie and Don Horne  
Caroline and Redmond Ingalls  
Bruce W. Kirbo, Jr., Attorney at Law

Mr. and Mrs. Michael M. Ledyard  
Mac's Wingshooting Adventures  
Julie and Bob McClure  
McCollum, Rawlins, Cauley & Parrott  
Keith McNeill Plumbing  
Merrill Lynch  
Native Nurseries  
Old Meridian  
Prime Meridian Bank  
Mr. and Mrs. Samuel Scovil  
Square One Aesthetics & Wellness  
Harriet and Warren Stephens  
Rebecca and Harris Strickland  
Synovus Bank  
Target Print & Mail  
Thomas County Federal Bank  
Thomasville Animal Hospital  
Jonathan Vines, Landscape Architect  
Wiregrass Electric  
Mr. and Mrs. C. Martin Wood III

# 2022 SUPPORT

## GRANTS, JOINT VENTURES, COST SHARE AGREEMENTS

Grants and similar funding opportunities made up over 28% of our revenue in 2022, an important part of the diverse mix of sources used to fund our work.

California Department of Fish & Wildlife  
Cornell Lab of Ornithology  
Colorado State University  
The Fish & Wildlife Foundation of Florida, Inc.  
Florida Wildlife Commission  
Georgia Dept of Natural Resources  
Georgia Ornithological Society  
Gulf Power  
Mississippi State University  
Missouri Dept of Conservation  
NASA  
National Fish and Wildlife Foundation  
Park Cities Quail  
Partnership for Gulf Coast Land Conservation, Inc.  
Pheasants Forever, Inc.  
State of Florida  
Texas Parks and Wildlife Department  
University of California, San Diego  
U.S. Department of Agriculture, Forest Service  
U.S. Department of Agriculture, NRCS  
U.S. Department of Interior/ US Geological Survey  
U.S. Department of Interior/Fish & Wildlife Service  
Wade Research Foundation  
Westervelt Ecological Services  
Wildlife Management Institute Incorporated  
Worcester Polytechnic Institute



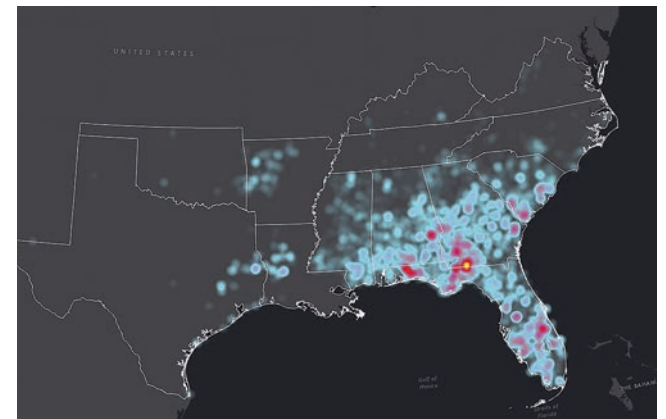
comprehensive prescribed fire manual is being developed to provide key information on optimizing habitat for rails while minimizing mortality.

## RAIL RESEARCH HIGHLIGHTS PRESCRIBED FIRE

The Eastern Black Rail is a threatened species that lives in fire-dependent coastal high marshes. Tall Timbers' Stoddard Bird Lab is researching the species to help assess populations, and learn how prescribed fire can improve their habitat across the Gulf Coast states. The three-year NOAA RESTORE Science Act project is slated to end in 2023. Research has already resulted in official survey protocols for the species, and guidelines for detecting them with autonomous recording units. A

## GEOSPATIAL LAB LEVERAGES GRANTS FOR CONSERVATION TECH

Grant funding is critical to our Geospatial Lab's work developing conservation technology. For example, tapping into a \$1.8 million grant, the Lab created the Southeast Fire Map in a joint effort with the U.S. Geological Survey to map all detectable fires across nine states using satellite data. Grant funding also allowed for continued work with NASA to track and analyze fire emissions and study surface vegetation. Additionally, the Lab developed the SE Burn Permit Database to analyze fire use based on permitting records from participating states. The technical capacity of the Geospatial Lab directly benefits our research and conservation programs, such as the development of mapping technology to identify ecologically at-risk areas to target for permanent conservation by our Land Conservancy.



Heat map of prescribed fire permitting data in the Southeast generated from the SE Burn Permit Database.

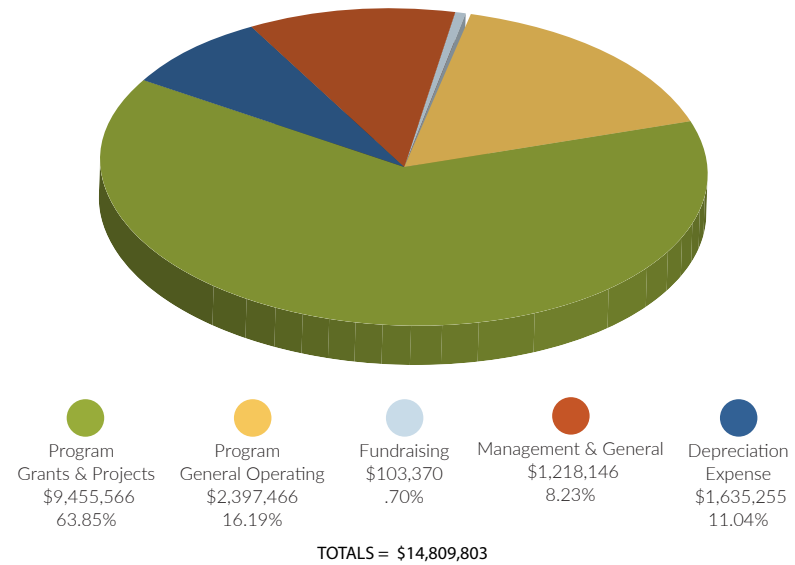
# 2022 STATEMENT OF FINANCIAL POSITION

## TALL TIMBERS RESEARCH, INC.

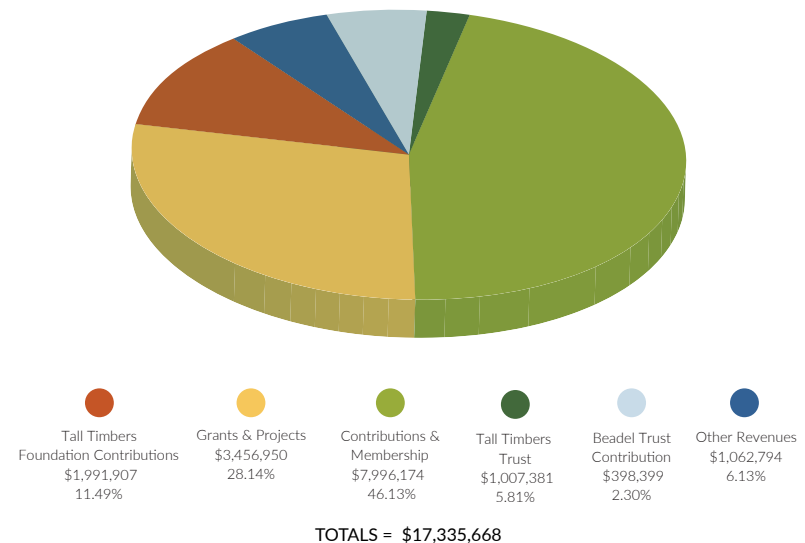
*Includes Subsidiaries*

|  | TOTAL ALL FUNDS     |                     |
|--|---------------------|---------------------|
| ASSETS                                       | 2021                | 2022                |
| <b>Current Assets</b>                        |                     |                     |
| Cash & Cash Equivalents                      | \$3,784,352         | \$5,600,118         |
| Accounts Receivable                          | -                   | 852,686             |
| Grants/Projects Receivable                   | 1,581,792           | 1,129,208           |
| Due from Tall Timbers Foundation, Inc. (Net) | 132,947             | -                   |
| Prepaid Expenses                             | 2,181               | 193,175             |
| <b>Total Current Assets</b>                  | <b>\$5,501,272</b>  | <b>\$7,775,187</b>  |
| <b>Property &amp; Equipment</b>              |                     |                     |
| At Cost less Accumulated Depreciation        | \$40,412,348        | \$40,924,293        |
| <b>Other Assets</b>                          | <b>34,419</b>       | <b>115,585</b>      |
| <b>TOTAL ALL ASSETS</b>                      | <b>\$45,948,039</b> | <b>\$48,815,065</b> |
| <b>LIABILITIES &amp; NET ASSETS</b>          |                     |                     |
| <b>Current Liabilities</b>                   |                     |                     |
| Accounts Payable                             | 272,321             | 479,259             |
| Due to Tall Timbers Foundation, Inc.         | -                   | 83,650              |
| Notes Payable                                | 446,188             | 567,761             |
| Deferred Revenue                             | 189,395             | 155,450             |
| <b>Total Current Liabilities</b>             | <b>\$907,904</b>    | <b>\$1,286,120</b>  |
| <b>Long Term Liabilities</b>                 |                     |                     |
| Notes Payable - net of current portion       | \$1,770,322         | \$1,733,267         |
| <b>Total Liabilities</b>                     | <b>\$2,678,226</b>  | <b>\$3,019,387</b>  |
| <b>NET ASSETS</b>                            |                     |                     |
| Without Donor Restrictions                   | 8,806,597           | 8,980,493           |
| With Donor Restrictions                      | 34,463,216          | 36,815,185          |
| <b>Total Net Assets</b>                      | <b>\$43,269,813</b> | <b>\$45,795,678</b> |
| <b>TOTAL LIABILITIES &amp; NET ASSETS</b>    | <b>\$45,948,039</b> | <b>\$48,815,065</b> |

## ALLOCATION OF FUNDS



## SOURCES OF REVENUE





13093 Henry Beadel Drive  
Tallahassee, FL 32312  
850/893-4153 PH | 850/893-6470 FAX  
www.talltimbers.org



Address service requested

Non-profit Org.  
U.S. POSTAGE  
PAID  
Permit No. 329  
Tallahassee, FL



Editing & Design – Rose Rodriguez & Brian Wiebler

## THANK YOU 2022 SPONSORS

